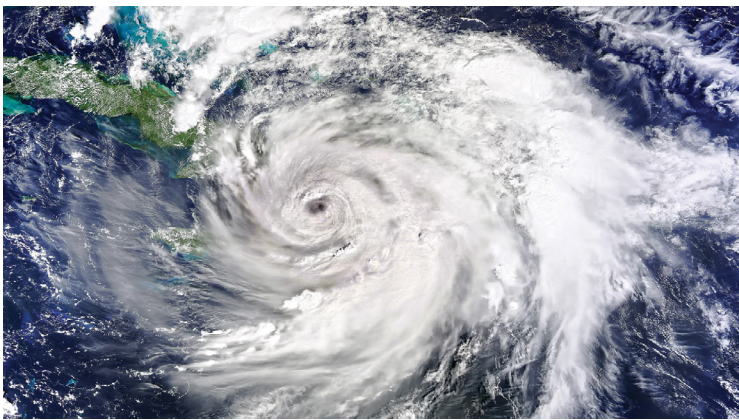


Are You Prepared for Storm Season?



Storms can occur at any time of the year. In the US and Canada, however, most damage occurs from spring through fall. Midwest Electric Products can help you to be prepared for the power outages that are associated with storms. Our transfer switches will enable you to safely transfer the power from the normal power source to your generator. Don't forget to use our power inlets to allow quick and easy connections to your portable generators. Prepare now, before the storms arrive!

The following pages highlight the most popular products sold during flood season. For our full line of products, please see our General Products catalog, MET-017.



Transfer Switches



Application Information

Midwest Electric heavy duty manual transfer switches help provide reliable transfer of power from the normal utility-supplied source to a standby generator, enabling the user to readily maintain power during utility outages.

- Use them anywhere an extended outage would result in severe loss, damage or inconvenience.
- Designed to be operational and switchable at full rated capacity, Midwest Electric transfer switches are available in single- and three-phase configurations at ratings through 600V.
- The double-throw mechanism helps prevent dangerous backfeeding of generator power into the utility system.

Features and Benefits

Electrical Ratings

- 100-400 amperes
- 240V or 600V models
- 10kAIC

Rugged Durability

- Break before make switch mechanism*
- All-in-one construction with factory-assured terminations
- Bus bars interconnect main and standby switches*
- Knife blade switch contacts help provide long life
- NEMA 3R weatherproof enclosure
- G90 galvanized steel construction for superior corrosion protection
- Durable polyester powder coat finish resists chipping and fading
- High quality, user-tested components designed for long life

User Protection

- Interlock allows door opening only when switch is in the OFF position*
- Padlock provision in all three ON-OFF-ON transfer positions
- Padlock provision on door
- Clear line shield for visual verification of blade position while helping guard against contact with live parts

Installation Ease

- Optional neutral kits available for both 240V and 600V models
- Broad range of concentric knockouts accommodate varying wiring needs
- All terminals accept copper or aluminum wire for installation flexibility



* On most models.



Transfer Switches

Steel Enclosures

Two Pole, 100 – 400 Amps, 120/240V

Fig.	Model Number	Switch Ratings		Optional Neutral Kit ¹	Unit Wt.	UL
		Amps				
		Main	Standby			
A	GS1101B12UL	100	100	NEU102	31	cUL _{US}
	GS1201B20UL	200	100	NEU202	42	
	GS1202B20UL	200	200	NEU202	46	
	GS1402B01UL	400	200	NEU407	71	
	MTU225RA	400	400	NEU407	152	

¹ Order Neutral Kit for 3-wire system (120/240).

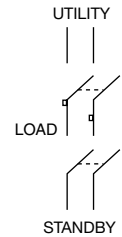


Fig. A
GS1101B12UL, GS1201B20UL,
GS1202B20UL, GS1402B01UL,
MTU225RA

Three Pole, 200 – 400 Amps, 240V

Fig.	Model Number	Switch Ratings		Optional Neutral Kit ¹	Unit Wt.	UL
		Amps				
		Main	Standby			
B	GS3402B01UL	400	200	NEU407	107	cUL _{us}
	MTU325RA	400	400		152	

¹ Order Neutral Kit for 4-wire system (280Y/120).

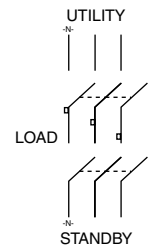


Fig. B
GS3402B01UL, MTU325RA,
GS3161B12UL, GS3262B25UL,
MTU365RA

Three Pole, 100 – 400 Amps, 600V



Fig.	Model Number	Switch Ratings		Optional Neutral Kit ¹	Unit Wt.	UL
		Amps				
		Main	Standby			
B	GS3161B12UL	100	100	NEU102	31	cUL _{us}
	GS3262B25UL	200	200	NEU202	48	
	MTU365RA	400	400	NEU407	152	

¹ Order Neutral Kit for 4-wire systems (208Y/120, 480Y/277, 600Y/347).

All three pole models are suitable for use in 1-Phase, 3-wire, switched neutral applications – no neutral required.

Light Duty Transfer Switches with Aluminum Enclosures

Two Pole, 100 – 200 Amps, 120/240V or 240V

Fig.	Model Number	Switch Ratings		Neutral Kit	Unit Wt.	UL
		Amps				
		Main	Standby			
Two Pole – 120/240V						
C	GS3161G	100	100	Factory Installed	11	c  US
Two Pole – 240V						
D	GS3262G	200	200	Factory Installed	43	c  US

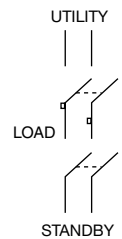


Fig. C
GS316G, GS1202B20M

Transfer Switch with Attached Meter Socket and Steel Enclosure

Two Pole, 200 Amps, 120/240V

Fig.	Model Number	Switch Ratings		Neutral Kit	Unit Wt.	UL
		Amps				
		Main	Standby			
C	GS1202B20M	200	200	Factory Installed	50	N

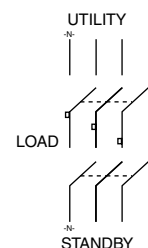


Fig. D
GS3262G

Power Inlets



Application Information

Power inlets from Midwest Electric work with the manual transfer switches for standby power. Each inlet comes in a single enclosure for maximum protection against weather and normal field use.

Features and Benefits

- All-in-one construction with factory-assured terminations help reduce installation time
- NEMA 3R weatherproof enclosure
- G90 galvanized steel construction for superior corrosion protection
- Durable polyester powder coat finish resists chipping and fading
- Rolled edge door for cord protection
- Cover design accommodates cords in place while maintaining NEMA 3R integrity
- Padlockable to help prevent unauthorized access
- Deadfront constructions help prevent accidental contact with live parts



20 – 50 Amps, 120/240V

Fig.	Model Number	Amps	Receptacles	Dimensions (inches)		
				Height	Width	Depth
A	U020N	20	L14-20	14-3/8	6-3/4	5-3/16
B	U030N	30	L14-30			
C	U050N	50	CS6375 ²			



Fig. A
U020N
L14-20



Fig. B
U030N
L14-30



Fig. C
U050N
CS6375

¹ Also includes (2) MHQL1120 20A circuit breakers and one breaker space.
² California Standard, three pole, 4 wire grounded non-NEMA.

Temporary Power Outlets



Application Information

Site-Power™ temporary power equipment from Midwest Electric combines the metering, circuit protection and power outlet combinations that are required on most construction sites. Every unit is delivered to the job site ready to go with factory installed and wired components — giving you the assurance needed for a reliable and safe temporary power unit. All Site-Power™ enclosures are constructed from heavy-gauge G90 galvanized steel for superior corrosion resistance. The durable polyester powder coat finish resists chipping and fading. The equipment door is designed to protect power cords and plugs and has a padlock provision to guard against unauthorized use or vandalism.

Features and Benefits

Rugged Durability

- Rolled edge door for cord protection
- Continuous duty meter socket with meter guides and reinforced jaws – ringless and ring type
- Utility accepted meter sealing accommodations
- NEMA 3R weatherproof construction
- G90 galvanized steel construction for superior corrosion resistance
- Durable polyester powder coat finish resists chipping and fading
- 10kAIC
- All GFCI duplexes are listed as weather resistant and tamper resistant as required by NEC in Article 406.8 and 406.11

User Safety

- Dead front construction prevents accidental contact with live parts
- Padlock provision to prevent unauthorized access

Installation Ease

- All components factory wired and assembled, reducing installation time
- Door removable for installation ease; stay open position for user convenience
- All terminals accept copper or aluminum wire for added installation flexibility
- Wide range of receptacle configurations
- Broad range of concentric knockouts to accommodate varied wiring needs
- All units with factory installed Cu/Al equipment ground lug

All-In-One Design

- Includes circuit breakers, receptacles and meter socket (if required)
- Available with GFI circuit breakers
- Eliminates construction delays due to red tag code violations
- All ringless meter socket models have standard horn bypass
- Conforms to NEC and NEMA standards



U055C010P

Temporary Power Outlets

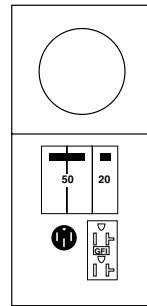


Fig. A
M055C010, R055C010
BR54U, 5-20R2GFCI

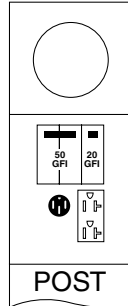


Fig. B
M055GP6033
BR54U, 5-20R2

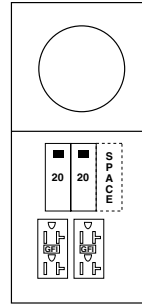


Fig. C
M011C010, R011C010
(2) 5-20R2GFCI

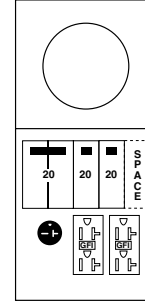


Fig. D
M038C010, R038C010
6-20R, (2) 5-20R2GFCI

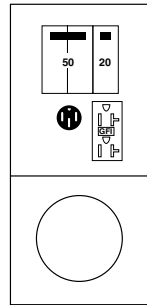


Fig. E
M055C010U, R055C010U
BR54U, 5-20R2GFCI

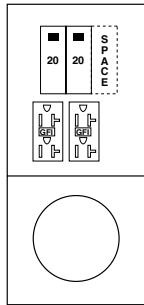


Fig. F
M011C010U, R011C010U
(2) 5-20R2GFCI

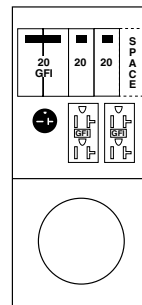


Fig. G
M038C033U, R038C033U
6-20R, (2) 5-20R2GFCI

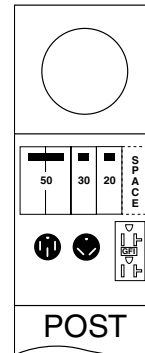


Fig. H
M075CP6010, R075CP6010,
R075CP6010FMG
BR54U, R32U, 5-20R2GFCI

Metered

Top Feed, 70-100 Amps, 120/240V

Fig.	Model Number		Receptacles	Circuit Protection	Amps	Wire Range*	Cabinet Size	Hub Opening	Load & Neutral Bar	Unit Wt.	Std Pkg.	UL
	Ring Type	Ringless										
A	M055C010	R055C010	BR54U, 5-20R2GFCI	THQL2150, THQL1120	70	K	9 x 30	Y	LC33N1	25	1	UL
B	M055GP6033 ¹	—	BR54U, 5-20R2	THQL1120GFT, THQL2150GFT	70	A2	9 PT		LC33N1	51		
C	M011C010	R011C010	(2) 5-20R2GFCI	(2) THQL1120, Space THQL1120	100	AA	9 x 30		LC33N1	21		
D	M038C010	R038C010	6-20R, (2) 5-20R2GFCI	THQL2120, (2) THQL1120, Space THQL1120	100	AA	9 x 30		LC55N1	25		

¹ Earth Burial Post. See page 11-25 for post mounted dimensions.

* Wire Range Table on page 9-12 of the MET-017 Midwest Electric General Products Catalog.

Bottom Feed, 70-100 Amps, 120/240V

Fig.	Model Number		Receptacles	Circuit Protection	Amps	Wire Range*	Cabinet Size	Hub Opening	Load & Neutral Bar	Unit Wt.	Std Pkg.	UL
	Ring Type	Ringless										
E	M055C010U	R055C010U	BR54U, 5-20R2GFCI	THQL2150, THQL1120	70	H	9 x 30U	N	LC33N1	25	1	UL
F	M011C010U	R011C010U	(2) 5-20R2GFCI	(2) THQL1120, Space THQL1120	100	X	9 x 30U	N	LC33N1	21		
G	M038C033U	R038C033U	6-20R, (2) 5-20R2GFCI	THQL2120GFT, (2) THQL1120, Space THQL1120	100	X	9 x 30U	Y	LC55N1	26		

* Wire Range Table on page 9-12 of the MET-017 Midwest Electric General Products Catalog.

Pedestal, Earth Burial, 100 Amps, 120/240V

Fig.	Model Number		Receptacles	Circuit Protection	Amps	Wire Range*	Cabinet Size	Hub Opening	Load & Neutral Bar	Unit Wt.	Std Pkg.	UL
	Ring Type	Ringless										
H	M075CP6010 ^{1,2}	R075CP6010, ^{1,3} R075CP6010FMG	BR54U, R32U, 5-20R2GFCI	THQL2150, THQL1130, THQL1120, Space THQL1120	100	Y	9PT	N	LC55N1	59	1	UL, MEG

¹ Available with factory installed TV/Telephone – M075CP6031, R075CP6031, R355CP6031. See pages 11-23–11-24 for TV/Telephone model diagrams.

² Available in camo green – M075CP6010GR.

³ Available in bronze finish – R075CP6010Z1.

* Wire Range Table on page 11-28 of the MET-017 Midwest Electric General Products Catalog.

Temporary Power Outlets

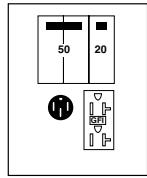


Fig. A
U055C010P
BR54U, 5-20R2GFCI

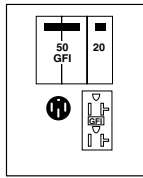


Fig. B
U055C033
BR54U, 5-20R2GFCI

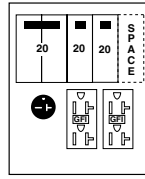


Fig. C
U038C010
6-20R, (2) 5-20R2GFCI

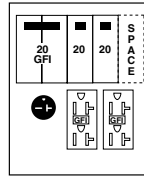


Fig. D
U038C033
6-20R, (2) 5-20R2GFCI

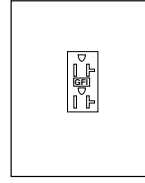


Fig. E
U010010
5-20R2GFCI

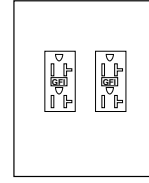


Fig. F
U011010, U012010
(2) 5-20R2GFCI

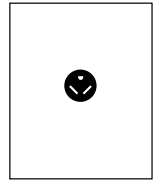


Fig. G
U013
R32U

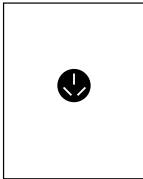


Fig. H
U050
10-50R

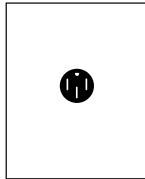


Fig. I
U054
BR54U

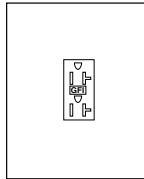


Fig. J
U010010GRP
5-20R2GFCI

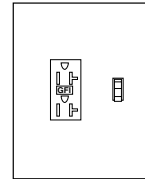


Fig. K
U010S010, U010S010GRP
5-20R2GFCI, Switch

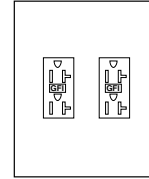


Fig. L
U012010GRP
(2) 5-20R2GFCI

Unmetered

70-100 Amps, 120/240V

Fig.	Model Number	Receptacles	Circuit Protection	Amps	Wire Range*	Cabinet Size	Hub Opening	Load & Neutral Bar	Unit Wt.	Std Pkg.	UL
A	U055C010P	BR54U, 5-20R2GFCI	THQL2150, THQL1120	70	K	6 x 14	Y	LC33N7	10	4	UL US
B	U055C033	BR54U, 5-20R2GFCI	THQL2150GFT, THQL1120	70	K	6 x 14		LC33N7	10		
C	U038C010	6-20R, (2) 5-20R2GFCI	THQL2120, (2) THQL1120	100	AA	9 x 17		LC55N1	15		
D	U038C033	6-20R, (2) 5-20R2GFCI	THQL2120GFT, (2) THQL1120, Space THQL1120	100	AA	9 x 17		LC55N1	15		

* Wire Range Table on page 9-12 of the MET-017 Midwest Electric General Products Catalog.

Surface, 20-50 Amps, 120V

Fig.	Model Number	Receptacles	Circuit Protection	Amps	Wire Range*	Cabinet Size	Hub Opening	Load & Neutral Bar	Unit Wt.	Std Pkg.	UL
E	U010010	5-20R2GFCI	—	20	E	5 x 7	Y	—	4.5	4	UL US
F	U011010	(2) 5-20R2GFCI	—	20	E	5 x 7	Y				
F	U012010	(2) 5-20R2GFCI	—	20	E	5 x 7	N				
G	U013	R32U	—	30	F	5 x 7	Y				
H	U050	10-50R	—	50	G	5 x 7	Y				N

* Wire Range Table on page 9-12 of the MET-017 Midwest Electric General Products Catalog.

Surface, 50 Amps, 120/240V

Fig.	Model Number	Receptacles	Circuit Protection	Amps	Wire Range*	Cabinet Size	Hub Opening	Load & Neutral Bar	Unit Wt.	Std Pkg.	UL
I	U054	BR54U	—	50	G	5 x 7	Y	—	5	4	UL US

* Wire Range Table on page 9-12 of the MET-017 Midwest Electric General Products Catalog.

Surface, 20 Amps, 120V

Fig.	Model Number	Receptacles	Number of GFI	Amps	Wire Range*	Cabinet Size	Hub Opening	Enclosure Color	Unit Wt.	Std Pkg.	UL
J	U010010GRP	5-20R2GFCI	1	20	E	5 x 7	N	Camo Green	4	1	UL US
K	U010S010GRP	5-20R2GFCI, Switch	1	20	R	5 x 7	N	Camo Green	3		
L	U012010GRP	(2) 5-20R2GFCI	2	20	J	5 x 7	N	Camo Green	3		

* Wire Range Table on page 10-13-10-14 of the MET-017 Midwest Electric General Products Catalog.

Power Outlets



Application Information

Portable equipment requiring electricity continues to increase steadily in both number and variety. This creates the need for conveniently located receptacles to provide power for cord connected equipment. Midwest Electric Power Outlets provide one or more receptacles, with or without overcurrent protection, in a single enclosure, eliminating the need for several separately mounted components while providing maximum protection against weather and normal field use. Additionally, many models also include disconnecting, metering, and/or pedestal mounting functions in a single NEMA 3R enclosure/assembly.

Features and Benefits

- NEMA 3R weatherproof construction
- G90 galvanized steel construction for superior corrosion resistance
- Durable polyester powder coat finish resists chipping and fading
- All in one construction for factory assured terminations
- Rolled edge door for cord protection
- Cover design allows cords to exist while maintaining the NEMA 3R integrity
- Wide assortments of concentric knockouts offer flexibility in the installation
- All GFCI duplexes are listed as weather resistant and tamper resistant as required by NEC in Article 406.8 and 406.11
- Padlockable door to help prevent unauthorized access
- Dead front construction prevents accidental contact with live parts
- All components factory wired and assembled



U041C

Unmetered

Surface, 30 Amps, 120V

Fig.	Model Number	Receptacles	Circuit Protection	Amps	Wire Range*	Cabinet Size	Hub Opening	Load & Neutral Bar	Unit Wt.	Std Pkg.	UL
A	U013C	R32U	THQL1130	30	A	6 x 9	Y	LC31N3	7	4	cULus

* Wire Range Table on page 10-14 of the MET-017 Midwest Electric General Products Catalog.

Surface, 70 Amps, 120/240V

Fig.	Model Number	Receptacles	Circuit Protection	Amps	Wire Range*	Cabinet Size	Hub Opening	Load & Neutral Bar	Unit Wt.	Std Pkg.	UL
B	U041C	R32U, 5-20R2	THQL1130, THQL1120, Space THQL1120	70	K	6 x 14	Y	LC33N7	10	4	cULus

* Wire Range Table on page 10-14 of the MET-017 Midwest Electric General Products Catalog.

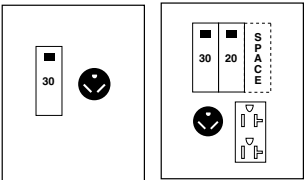


Fig. A
U013C
R32U

Fig. B
U041C
R32U, 5-20R2

Terminal Boxes



Application Information

Terminal Boxes convert overhead to underground services and are used for multi-circuit wiring. The NEMA 3R enclosure provides protection for all terminations inside and provides a convenient, time-saving means of wire splices and connections. Midwest offers a full line of terminal boxes for 240 volt or 400 volt single-phase and three-phase 600 volt ratings to meet your application requirements. Typical applications, both indoor and outdoor, include inter-building wiring on farms, convenient splicing means for industrial use and commercial construction.

Features and Benefits

Installation Ease

- Rated for indoor and outdoor installations (NEMA 1/3R)
- Factory installed terminal bars accept copper or aluminum wire
- Plenty of concentric knockouts to reduce installation time
- Doors feature stay-open position or remove entirely to simplify wiring
- Stationary mounted terminations simplify circuit tracing
- Rolled edge door for cord protection

Durable, Safe, Long-lasting Construction

- G90 galvanized steel construction for superior corrosion protection
- Durable polyester powder coat finish resists chipping and fading
- Padlock provision helps prevent unauthorized entry
- Insulated lugs comply with NEC 314.28 E(4)
- All components factory wired and assembled

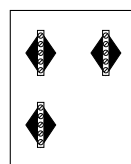


Fig. A
T1206, T1210, T1220

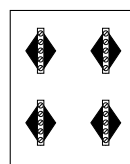


Fig. B
T3210, T3220,
T3610, T3620

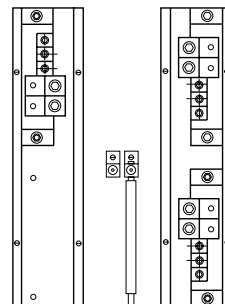


Fig. C
T1240UL

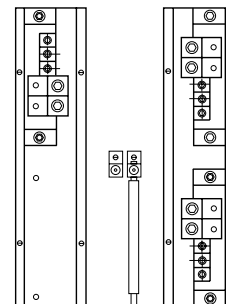


Fig. D
T3640UL

AC

240V Max

Fig.	Model Number	Wire Range	Phase	Amps	Cabinet Size	Hub Opening	Unit Wt.	Std Pkg.	UL
A	T1206	(4) 14-4	1	60	7 x 10	Y	6	4	Y ¹
A	T1210	(5) 14-1/0	1	100	9 x 17		11		
B	T3210	(5) 14-1/0	3	100	9 x 17		12		
A	T1220	(3) 1/0-250, (3) 12-1/0	1	200	14 x 21		19		
B	T3220	(3) 1/0-250, (3) 12-1/0	3	200	14 x 21		19		
C	T1240UL	(2) 2-600, (3) 6-350	1	400	16 x 29	Y ²	28		

600V Max

Fig.	Model Number	Wire Range	Phase	Amps	Cabinet Size	Hub Opening	Unit Wt.	Std Pkg.	UL
B	T3610	(5) 14-1/0	3	100	9 x 17	Y	12	1	Y ¹
B	T3620	(3) 1/0-250, (3) 12-1/0		200	14 x 21		19		
D	T3640UL	(2) 2-600, (3) 6-350		400	16 x 29	Y ²	29		



¹ cULus approved.

² Non-standard/Universal hub opening. Hub no longer furnished. Will accept U40 only – order separately. Consult Manufacturer.

Service Equipment



Application Information

Where electrical power enters a building or other structure, the National Electrical Code (NEC) requires electrical distribution equipment rated as “Service Entrance.” Such service equipment usually consists of one main breaker disconnect or space for up to 6 main disconnects. Midwest models meet these NEC requirements and are UL listed as service entrance equipment.

Specifications and Features

- Rated for use as service equipment
- NEMA 3R weatherproof enclosure
- G90 galvanized steel construction for superior corrosion protection
- Durable polyester powder coat finish resists chipping and fading
- Metered and unmetered construction available up to 200 Amps
- All-in-one construction available up to 400 Amps
- Available in surface or pedestal mount construction
- Segregated meter compartment for utility power protection
- Weather resistant and tamper resistant GFCI receptacles
- Horn bypass comes standard on ringless metered units

- Cu/Al rated field terminations
- Factory installed Cu/Al equipment ground lug
- Padlock provision to prevent unauthorized entry
- UL Listed (Panelboards No. 67)



For additional service entrance equipment information, please see the publications listed below. They can be ordered or downloaded from the Midwest website under Resources.

MET-037	DTE Approved Single and Horizontal Metering
MET-038	KCP&L Approved Single and Horizontal Metering
MET-039	MEG Approved Single and Horizontal Metering
MET-040	AEP Approved Single and Horizontal Metering

Service Equipment

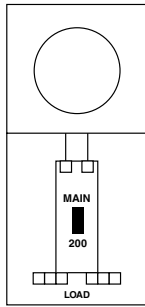


Fig. A
R200T
Series

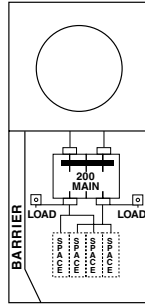


Fig. B
M281CB1
Series

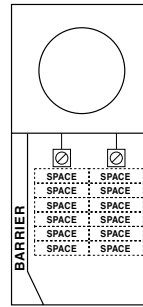


Fig. C
R256EB1A, R256EB1AETG, R256EB1FMG, R256EB1NAETG,
R256EB1NFMG, R256EB118AETG, R256EB118FMG
Parallel

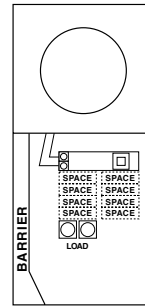


Fig. D
M208CR2A, M208CR2B,
R208CR2A, R208CR2AETG
Series

Metered

Surface Overhead Feed, 200 Amps, 120/240V

Fig.	Model Number		Circuit Protection	Amps	Spaces	Wire Range*	Cabinet Size	Load Center	Unit Wt.	Std Pkg.	UL
	Ring Type	Ringless									
A	—	R200T ¹	265A6249G1	200	—	AF	14 x 38	—	42	1	Y

¹ "Triple-Tap" – 3 load lugs per phase.

* Wire Range Table on pages 1-24–1-25 of the MET-017 Midwest Electric General Products Catalog.

Surface, Overhead/Underground Feed, 200 Amps, 120/240V

Fig.	Model Number		Circuit Protection	Amps	Spaces	Wire Range*	Cabinet Size	Load Center	Unit Wt.	Std Pkg.	UL and Utility Approved
	Ring Type	Ringless									
B	M281CB1	R281CB1 ¹	THQMV200WL	200	4	BK	14 x 28	LCTNL + LCBS	34	1	UL, AEP, ETG, GP
C	—	R256EB1A, ^{2,3} R256EB1AETG, R256EB1FMG, R256EB1NAETG, R256EB1NFMG, R256EB118AETG, R256EB118FMG	—	200	12	—	14 x 26	—	32		UL, ETG, MEG
D	M208CR2A ⁴	R208CR2A, R208CR2AETG	TQDL or equivalent	200	8	AN	14 x 28	LC1212PC	46		UL, ETG

¹ Available with barrel lock – R281CB1LK and R282CB1LK.

² Available with aluminum bussing and aluminum enclosure - R256EB1018A.

³ Available with galvanized enclosure with neutral installed - R256EB1NA.

⁴ Feed thru lug option available - M208CR2B.

* Wire Range Table on pages 1-24–1-26 of the MET-017 Midwest Electric General Products Catalog.

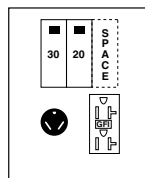


Fig. E
U041C010P
R32U, 5-20R2GFCl

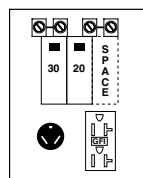


Fig. F
U041CTL010
R32U, 5-20R2GFCl

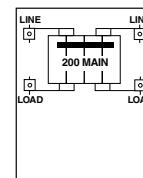


Fig. G
U280C1
Series/Parallel

Unmetered

Surface, 70-100 Amps, 120/240V

Fig.	Model Number	Receptacles	Circuit Protection	Amps	Lug Type	Wire Range*	Cabinet Size	Hub Opening	Load & Neutral Bar	Unit Wt.	Std Pkg.	UL
E	U041C010P	R32U, 5-20R2GFCl	THQL1130, THQL1120, Space THQL1120	70	Standard	P	6 x 14	Y	LC33N7	10	4	Y ¹
F	U041CTL010	R32U, 5-20R2GFCl	THQL1130, THQL1120, Space THQL1120	100	Loop Feed	W	9 x 17		LC33N1T	14	1	

¹ cULus approved.

* Wire Range Table on page 11-27-11-28 of the MET-017 Midwest Electric General Products Catalog.

Surface, 200 Amps, 120/240V

Fig.	Model Number	Circuit Protection	Amps	Spaces	Wire Range*	Cabinet Size	Load Center	Unit Wt.	Std Pkg.	UL
G	U280C1 ¹	THQMV200WL	200	0	BF	9 x 21	LCTL + LCBNS	18.2	1	cULus

¹ Series or parallel wired.

* Wire Range Table on pages 1-24–1-25 of the MET-017 Midwest Electric General Products Catalog.

Receptacles



Wiring	Volts	Amps	NEMA Configuration	Model Number
				Receptacles ²
2 Pole 3-Wire Grounding	125	20A	5-20R (w/ GFCI)	520R2GFI
		30A	TT-30R ¹	BR32U
				R32U
3 Pole 3-Wire	125/250	30A	10-30R	BR33
		50A	10-50R	BR53
3 Pole 4-Wire Grounding	125/250	30A	14-30R	BR34
		50A	14-50R	BR54U
		60A	14-60R	BR64U
4 Pole 4-Wire	120/208	60A	18-60R	—



¹ Travel Trailer use only.
² "BR" prefix models include base mount bracket - "R" prefix = panel mount.

For additional information, see our publications. These can be downloaded and/or ordered from our website: www.midwestelectric.com

- MET-017 Midwest Electric General Products Catalog
- MET-013 Transfer Switches and Power Inlets
- MET-037 DTE Approved Single and Horizontal Metering
- MET-038 KCP&L Approved Single and Horizontal Metering
- MET-039 MEG Approved Single and Horizontal Metering
- MET-040 AEP Approved Single and Horizontal Metering

Midwest Electric Products
305 Gregson Drive
Cary, NC 27511
Customer Service: 866-685-0577
www.midwestelectric.com

© 2025 Midwest Electric Products
MET-1005D (4/25)

Information provided is subject to change without notice. Please verify all details with Midwest Electric Products. All values are design or typical values when measured under laboratory conditions, and Midwest makes no warranty or guarantee, express or implied, that such performance will be obtained under end-use conditions.

