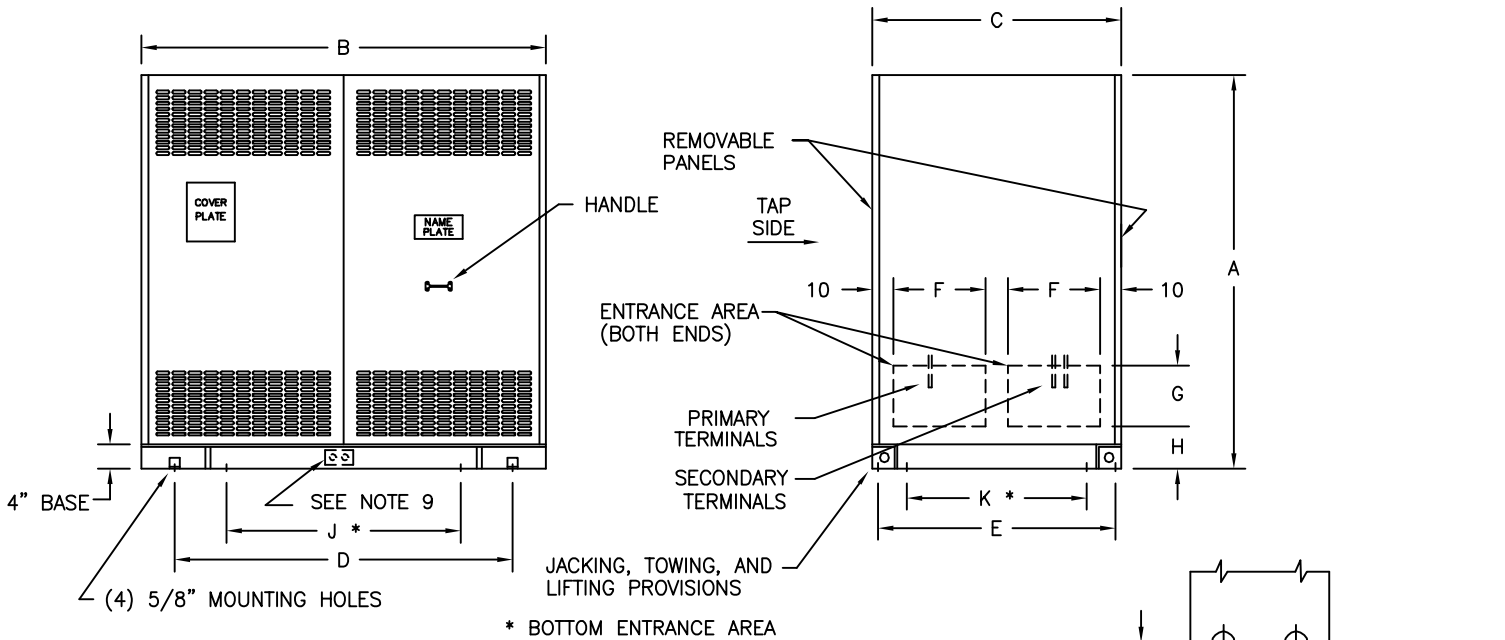


TYPICAL WIRING DIAGRAM

NOTES:

1. ALL UNITS ARE UL LISTED AND ARE DESIGNED IN ACCORDANCE WITH APPLICABLE NEMA AND ANSI STANDARDS.
2. TRANSFORMERS ARE DRY-TYPE, CLASS AA, VENTILATED ENCLOSURE FOR INDOOR USE.
3. TRANSFORMERS ARE FLOOR MOUNTED.
4. TRANSFORMERS HAVE 220°C CLASS INSULATION SYSTEM WITH THE AVERAGE WINDING TEMPERATURE RISE BASED ON 40°C MAXIMUM AMBIENT.
5. PAINT COLOR IS ANSI #61.



* BOTTOM ENTRANCE AREA

PRIMARY & SECONDARY TERMINAL DETAIL

CERTIFIED DIMENSIONS (INCHES)

NET WT. IN LBS.	A	B	C	D	E	F	G	H	J	K
7000	90	64	48	54	44 1/2	12 1/2	12	4 1/2	30	39

DRAWINGS
 APPROVAL
 RECORD
 QUOTE

QUANTITY	1	CUST.	REQUEST ID# 144381201							
KVA	1000	JOB								
PRIMARY VOLTAGE	480	P.O.								
SECONDARY VOLTAGE	208Y/120	S.O.								
TEMPERATURE RISE IN °C	150	CATALOG NO.								
WINDINGS & TERMINALS	COPPER									
FREQUENCY	60	BY	T.D.	ENG. LOG.	TITLE MEETS 10 CFR 431 (2016) EFFICIENCY DRY TYPE GENERAL PURPOSE TRANSFORMER THREE PHASE, 600 VOLT CLASS					
TAPS	+2, -2 X 3%	DATE	8-1-00							
GE Electrical Distribution & Control		REV		MFG. LOG.	DWG. NO. D4808A2562-012716A1					
		DATE:		DWG. FILE						