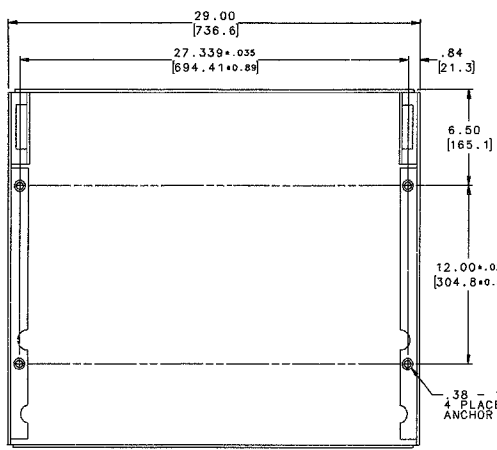


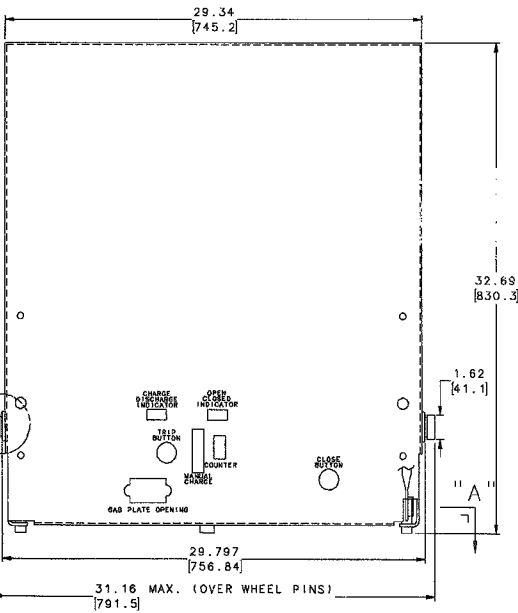
8 7 6 5 4 3 1

REVISIONS			
REV	DESCRIPTION	DATE	APPROVED
1	DCM # M3120	05/21/93	DW DORN

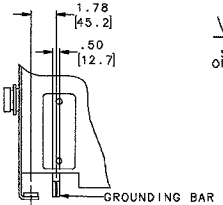
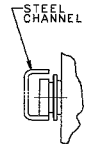
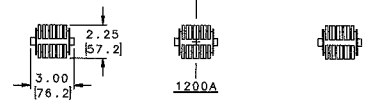
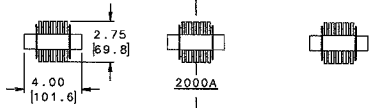
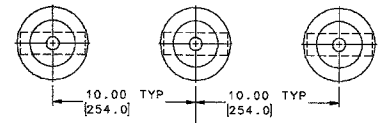
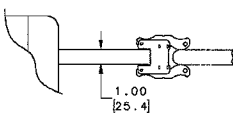
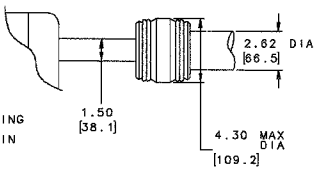
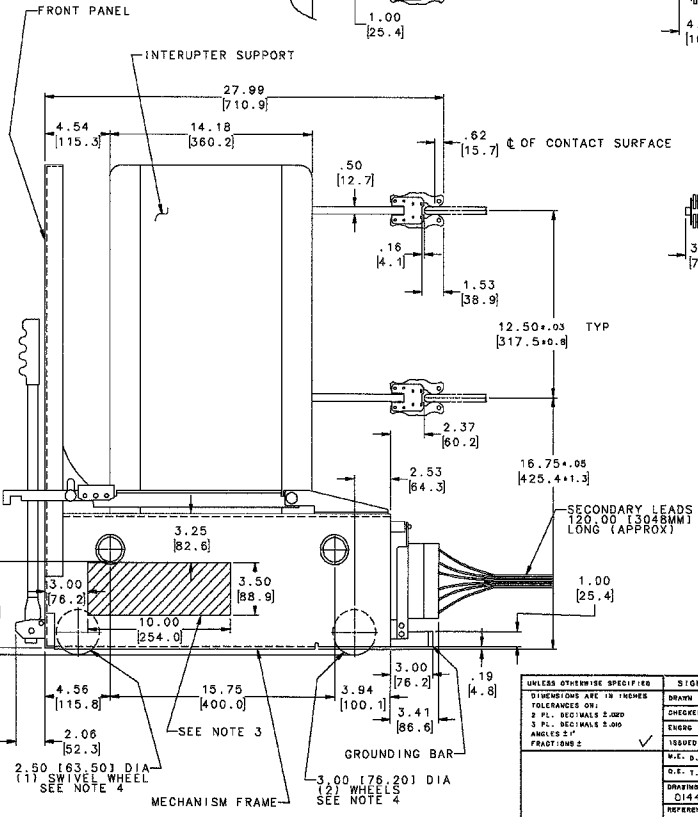
- NOTES:
- 1) DIMENSIONS ARE GIVEN IN INCHES OVER MILLIMETERS.
 - 2) ALL UNTOLERANCED DIMENSIONS ARE FOR REFERENCE ONLY.
 - 3) THIS AREA MUST BE FREE OF OBSTRUCTIONS THAT MIGHT INTERFERE WITH MECHANISM INTERLOCKS. (BOTH SIDES)
 - 4) THE THREE WHEELS ON BOTTOM OF BREAKER ARE DESIGNED ONLY FOR TRANSPORTING BREAKER WHEN SITTING ON FLOOR. THESE WHEELS MUST NOT BE USED TO SUPPORT BREAKER WHEN IN SERVICE MODE. FRONT TO BACK OR LATERAL CHANNELS UNDER BREAKER FRAME, OR A CHANNEL SECTION (ALSO PROVIDING A ROLLING SURFACE FOR BREAKER) AS SHOWN IN VIEW B ARE SUGGESTED METHODS OF SUPPORT.



VIEW A-A
BREAKER MOUNTING



VIEW B-B
SUGGESTED METHOD OF SUPPORTING BRK.



FOR INTERPRETATION OF DRAWINGS SEE 0282A3025
GE (USA) CONFIDENTIAL AND PROPRIETARY
 This GE document contains confidential and proprietary information of GE Electrical Distribution & Control (ED&C). It is loaned on condition that it and the information therein shall not be used by recipient nor be disclosed to others except as expressly approved by ED&C. Any document containing such information shall be returned on request.

UNLESS OTHERWISE SPECIFIED DIMENSIONS ARE IN INCHES TOLERANCES ON: 2 PL. DECIMALS 2.000 3 PL. DECIMALS 3.000 ANGLES 1° PRAC/TIMBS C	SIGNATURES	DATE	BURLINGTON, IA BREAKER OUTLINE FIRST MADE FOR POWER/VAC OEM INT.
	DRAWN: D.W. DORN CHECKED: ENGRG: J.L.E. ISSUED: M.L. M. CS M. W.C. S.P.B. C.E. T.G.	05/12/93 07/15/94 07/15/94 07/15/94	
	D WHEELS PL 15000	014402954 014402954 014402954	DWG NO: 014402954 DATE: 05/21/93 DW: DORN

014402954