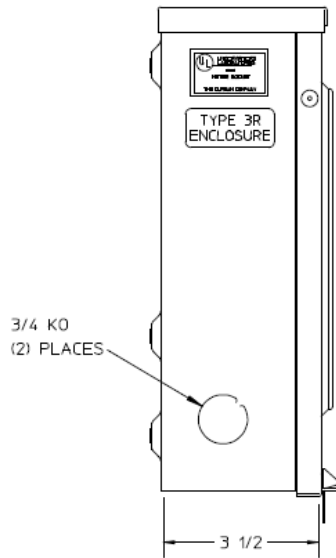
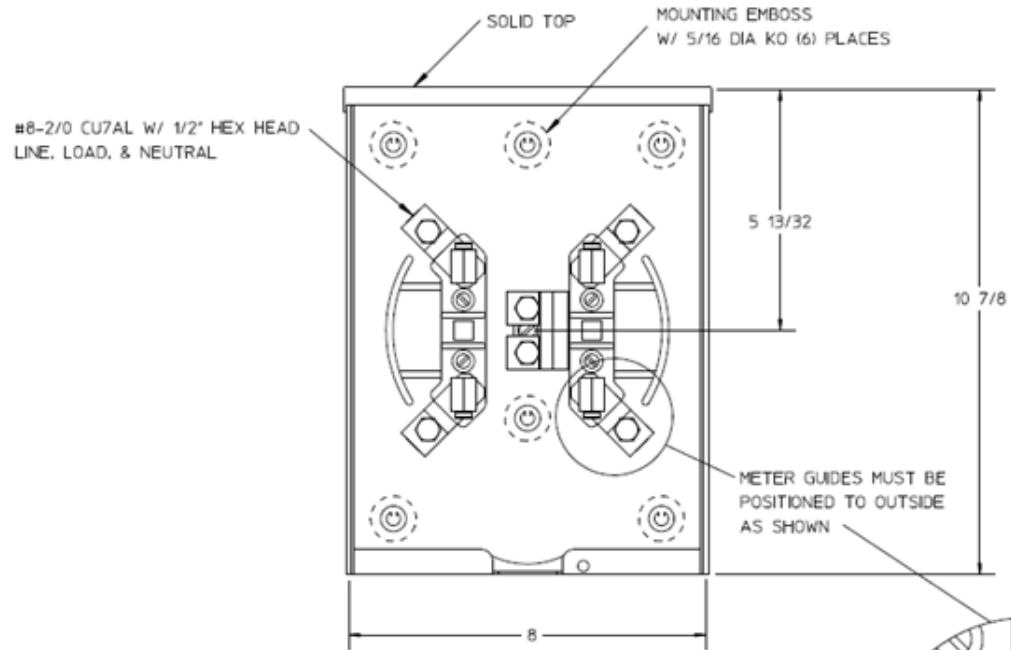


Side View



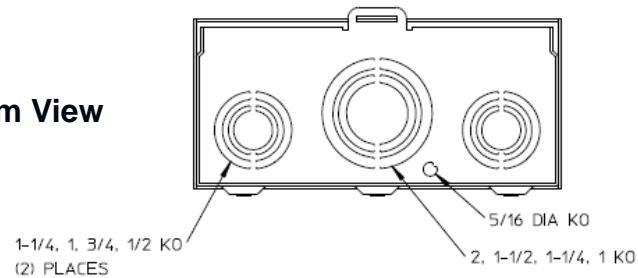
Front View




Notes

- 1) FINISH: GRAY
- 2) CABINET: 16 GA GALV. STEEL
- 3) 125 AMP CONTINUOUS,
600 VAC, 1 PHASE, 3 WIRE
- 4) TEMPORARY CARDBOARD METER
OPENING COVER SUPPLIED
- 5) MIDWEST LABEL ATTACHED TO THE
END OF THE CARTON
- 6) MIDWEST LOGO LOCATED IN THE LOWER
LEFT-HAND CORNER OF THE FRONT
- 7) SAFETY LABEL IS LOCATED ON THE
UPPER LEFT-HAND CORNER OF THE FRONT

Bottom View



		
METER SOCKET – (1) 125A 600V 1P3W SOLID TOP 4-TERMINAL N3R G90 BOT FEED		
CAT NO	DWG DATE	REV #
1006385BMEP	02/09/2016	01