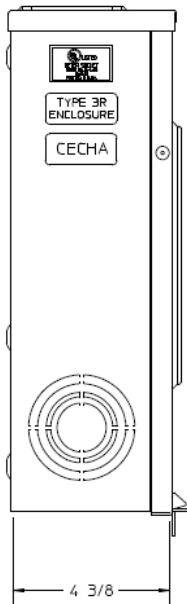
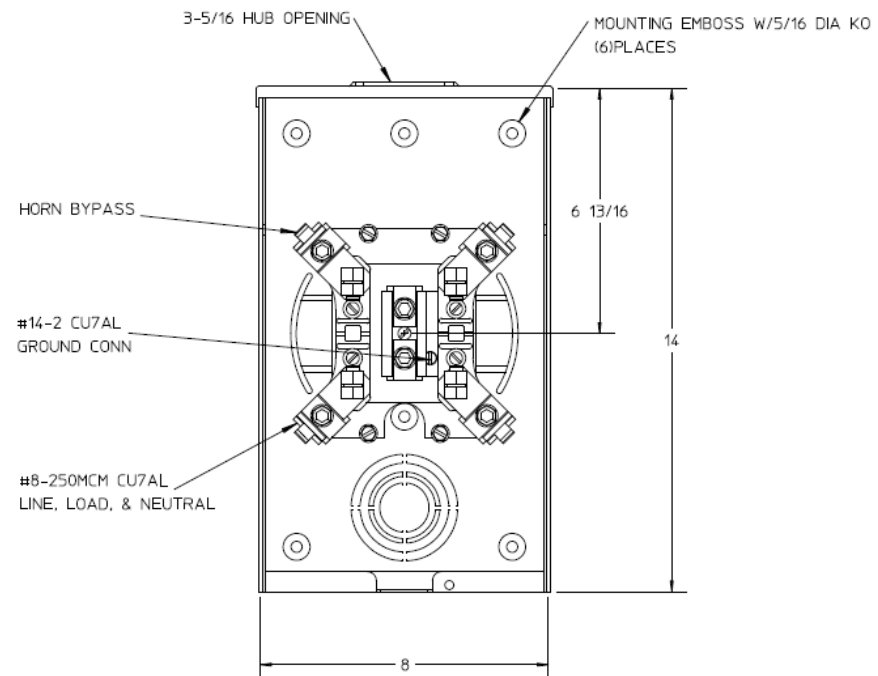


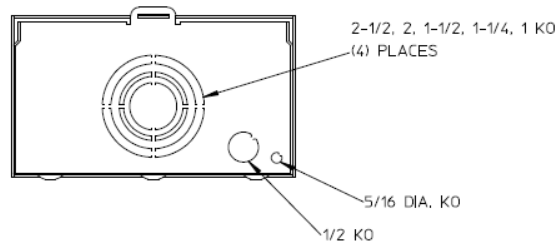
Left Side View



Front View Interior



Bottom View



Notes

- 1) FINISH: GRAY
- 2) CABINET: 16GA GALV. STEEL
- 3) 200 AMP CONTINUOUS
600 VAC, 1 PHASE, 3 WIRE
- 4) MIDWEST LABEL ATTACHED TO THE END OF THE CARTON.
- 5) TEMPORARY CARDBOARD METER OPENING COVER PROVIDED.
- 6) MIDWEST LOGO LOCATED IN THE LOWER LEFT-HAND CORNER OF THE FRONT.



METER SKT-(1) 200A 600V 1P3W G90 N3R HRN BYPASS
4-TERM SMALL HUB OPNG TOP/BOT FEED TPLX GRD

| CAT NO | DWG DATE | REV # |
|------------|------------|-------|
| 1007665MEP | 04/15/2016 | 02 |