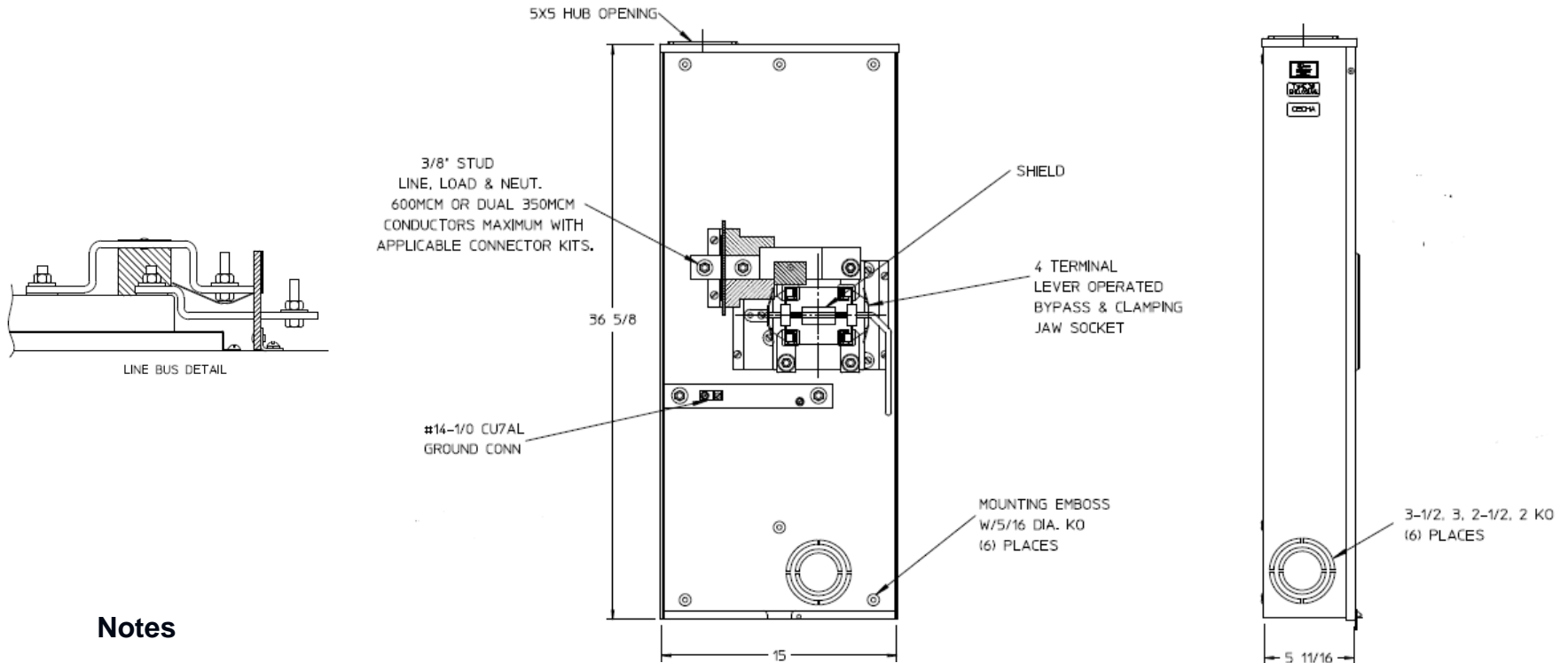


### Front View

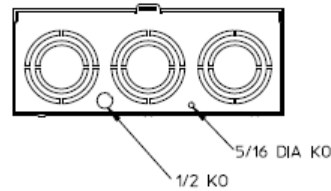
### Side View



### Notes

- 1) FINISH: GRAY
- 2) CABINET: 16 GA GALV. STEEL
- 3) 320 AMP CONTINUOUS  
600 VAC, 1 PHASE, 3 WIRE  
320 AMP BYPASS
- 4) TEMPORARY CARDBOARD METER  
OPENING COVER PROVIDED
- 5) MIDWEST LABEL ATTACHED TO THE  
END OF THE CARTON
- 6) MIDWEST LOGO LOCATED IN THE LOWER  
LEFT-HAND CORNER OF THE FRONT

### Bottom View



METER SOCKET – (1) 320A 600V 1P3W N3R 4-TERM  
HUB OPENING G90 LEVER BYPASS TOP FEED

CAT NO	DWG DATE	REV #
1007672MEP	02/10/2016	01