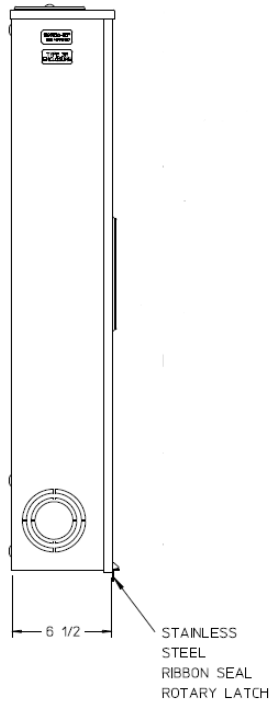
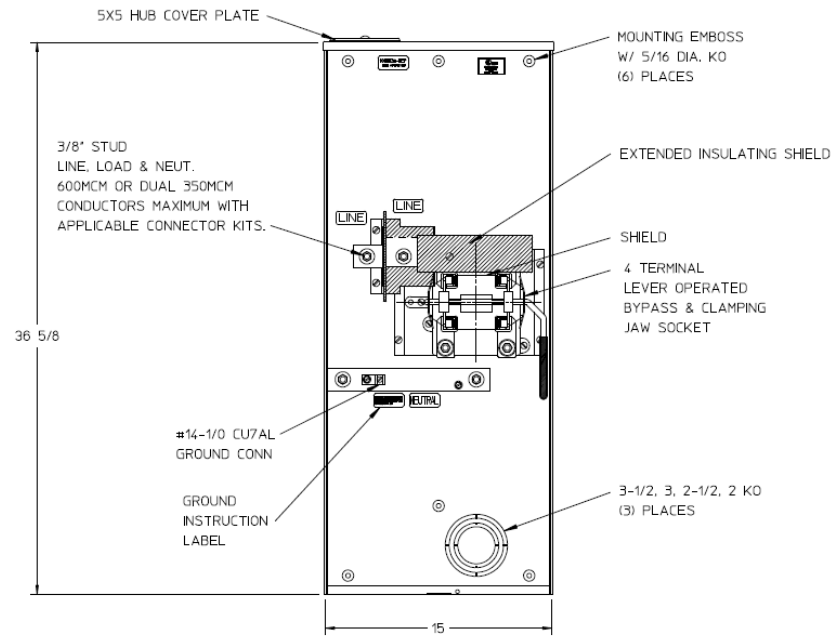


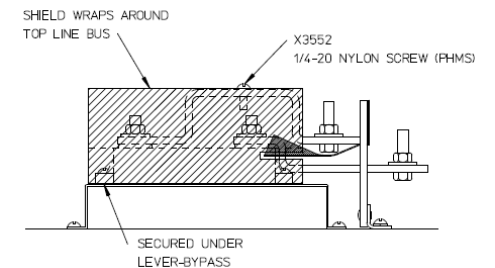
### Left Side View



### Front View Interior



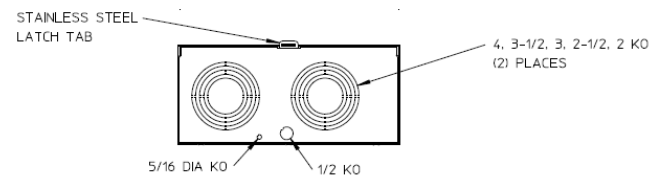
### Line Bus Detail View



### Notes

- 1) FINISH: GRAY
- 2) CABINET: 16 GA GALV. STEEL
- 3) 320 AMP CONTINUOUS 600 VAC, 1 PHASE, 3-WIRE 320 AMP BYPASS
- 4) MIDWEST LABEL ATTACHED TO THE END OF CARTON.
- 5) TEMPORARY CARDBOARD METER OPENING COVER PROVIDED.
- 6) MIDWEST LOGO STAMPED IN THE LOWER LEFT-HAND CORNER OF FRONT.

### Bottom View



METER SKT-(1) 320A 600V 1P3W G90 N3R 4-TRM TPLXGRD  
LARGE HBCVRPLT LVR BYP TOP/BOT FED MEG APPROVED

CAT NO	DWG DATE	REV #
1008836MEP	05/11/2016	02