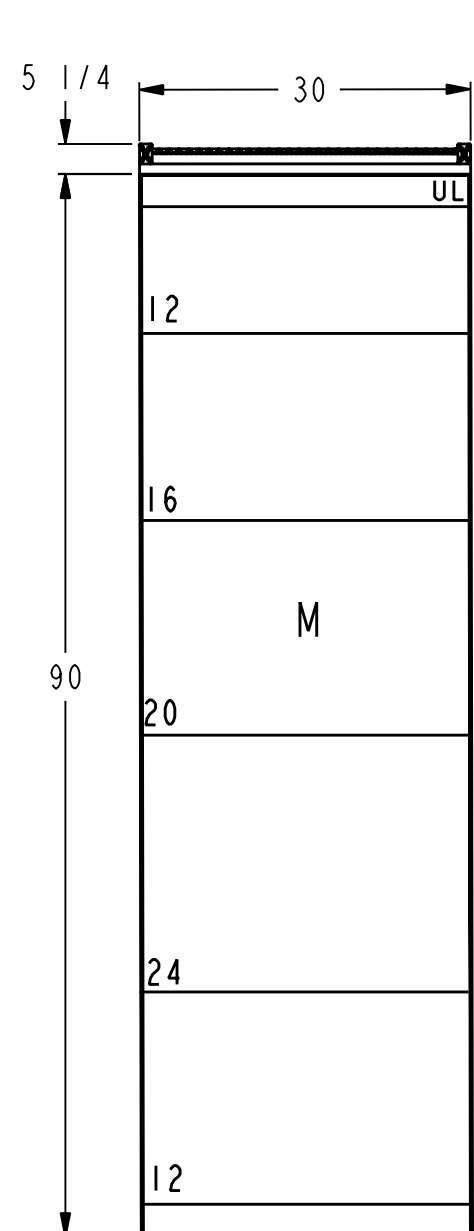
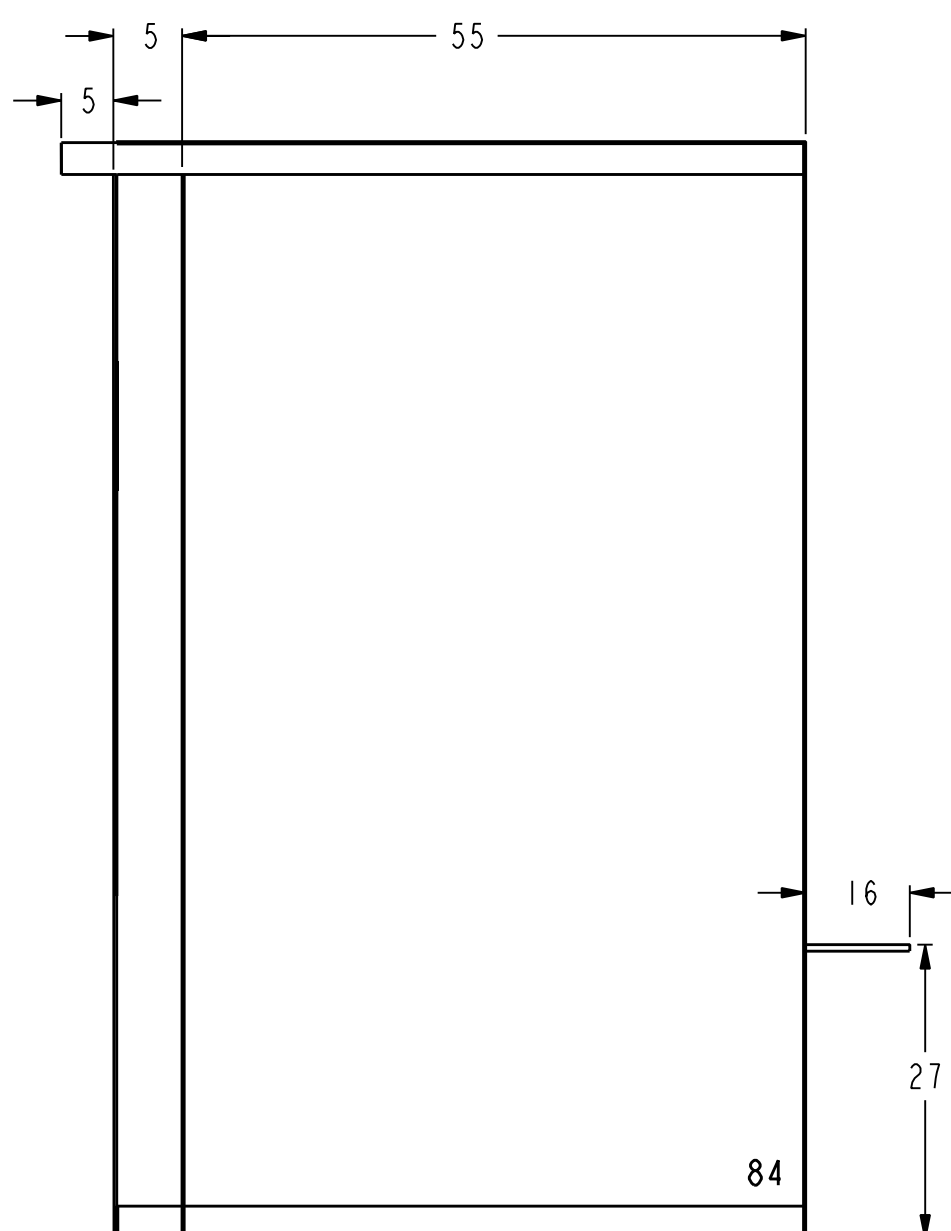


**GE PROPRIETARY AND CONFIDENTIAL INFORMATION**  
 This document is the property of General Electric Company ("GE") and contains proprietary information of GE. This document is loaned on the express condition that neither it nor the information contained therein shall be disclosed to others without the express written consent of GE Industrial Systems, and that the information shall be used by the recipient only as approved expressly by GE Industrial Systems. This document shall be returned to GE upon its request. This document may be subject to certain restrictions under U.S. export control laws and regulations.

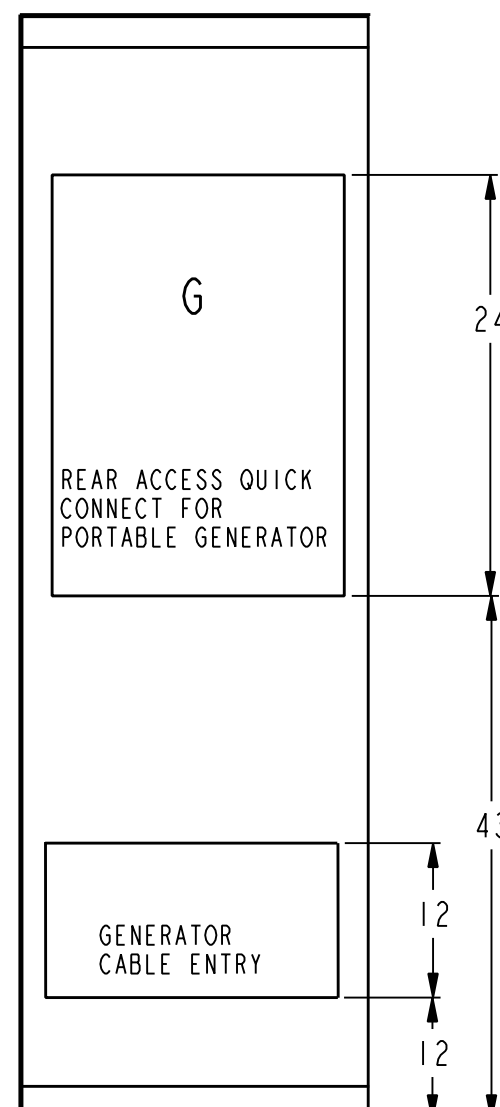
| REVISIONS |             |          |          |
|-----------|-------------|----------|----------|
| REV.      | DESCRIPTION | DATE     | APPROVED |
| 01        | R0902448    | 06/01/09 | EM       |
| 02        | R1003771    | 11/01/10 | EM       |
| 03        | R1016011    | 12/16/10 | EM       |



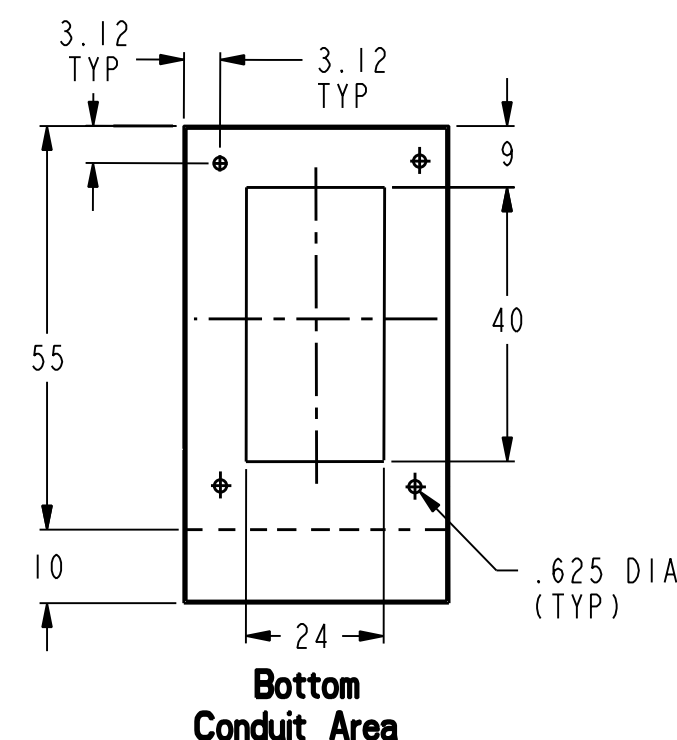
**FRONT VIEW**  
(N3R Front Removed)



**SIDE VIEW**



**REAR VIEW**



**Bottom Conduit Area**

PV20

Note:-  
FACILITY CONNECTIONS SETUP FOR BOTTOM ENTRY/EXIT

**GENERATOR CONNECTIONS:**

CAM-LOCK RECEPTACLES: Hubble 400A HBLFRSC  
 Qty/Phase/Color: 4/A/Brown, 4/B/Orange, 4/C/Yellow, 4/N/White, 2/Gnd/Green.  
 LUGS: 350-600 kcmil, mechanical 75°C  
 Qty of cable landings : 5/A, B, C, N & Gnd

**FACILITY CONNECTIONS:**

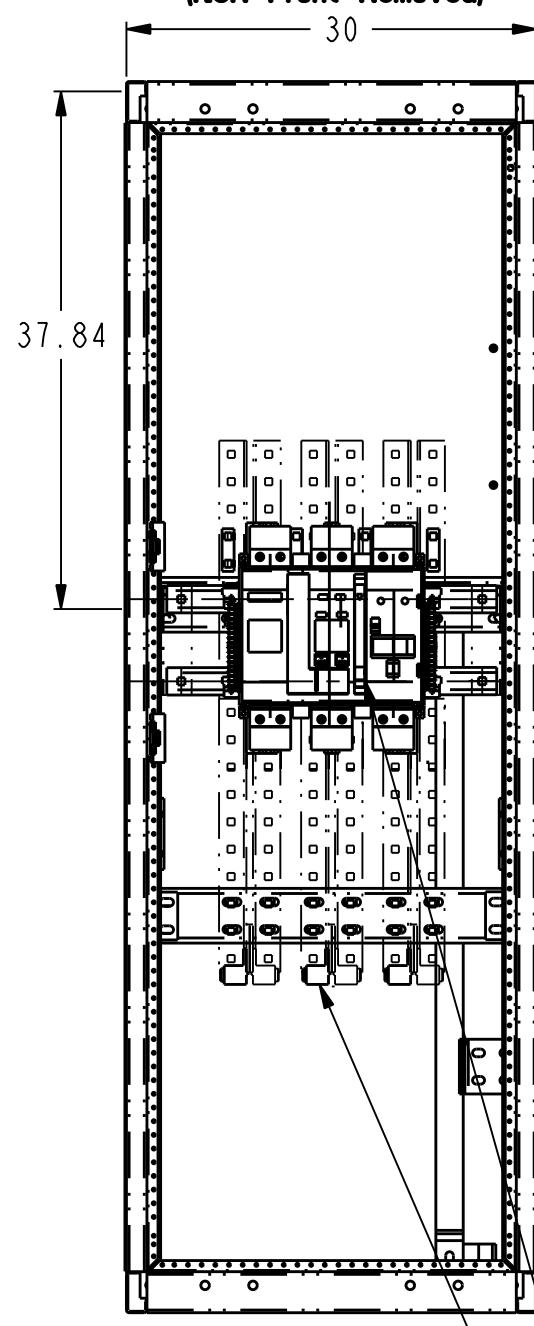
LUGS: 350-600 kcmil, mechanical 75°C  
 Qty of cable landings : 5/A, B, C, N & Gnd

**MAIN BREAKER:**

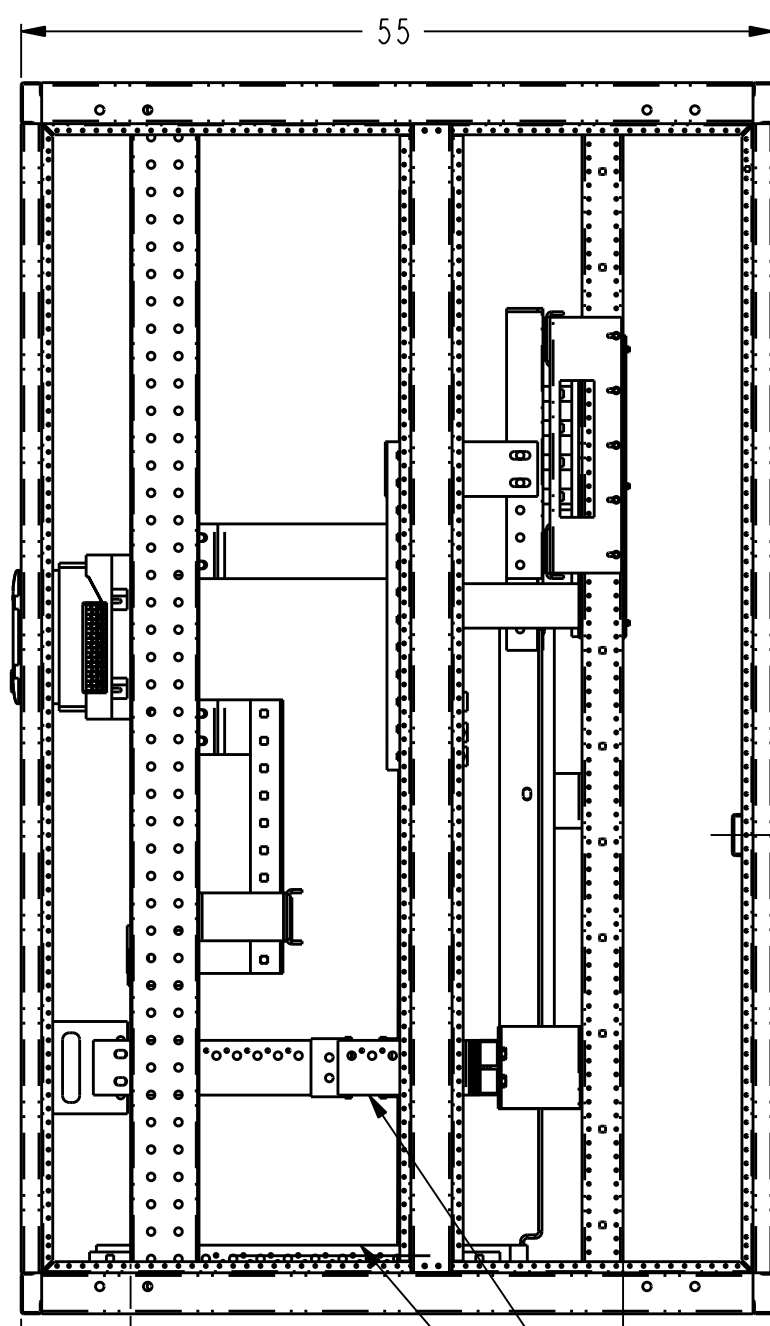
GE PB11, 800A, 100% Current Rated, LSIGA Entelligence TU (gf alarm only)  
 stationary mounted, kirk lock provision, bell alarm.

**ENCLOSURE:**

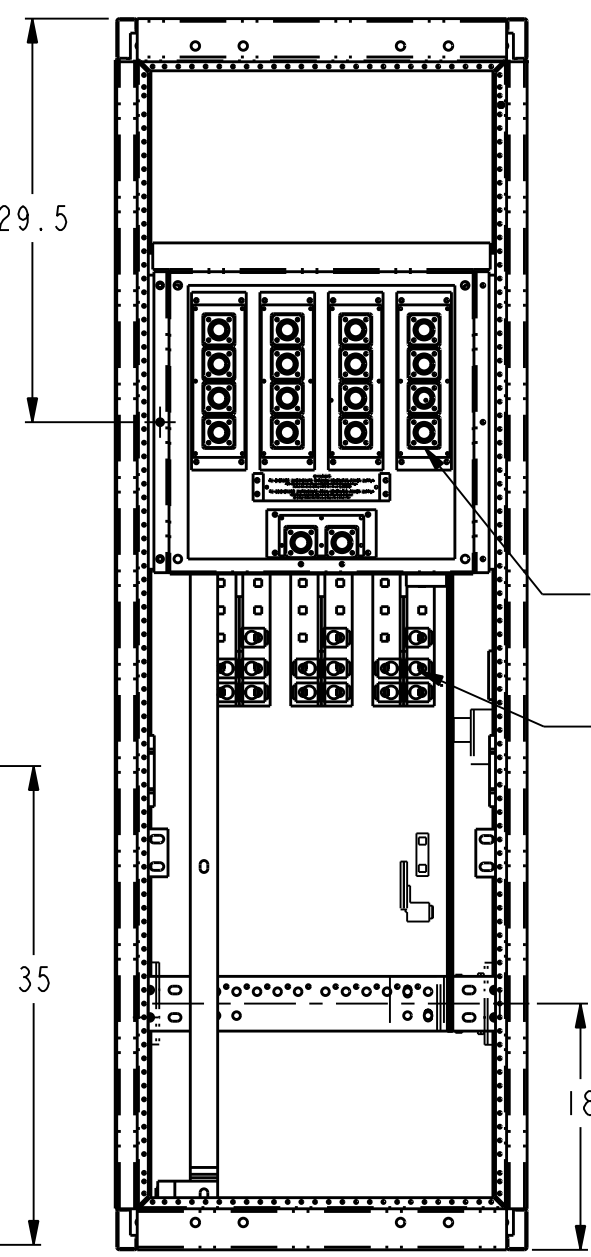
Nema 3R, galvanized roof, front door, rear and side covers powder coat painted ANSI 61 gray.



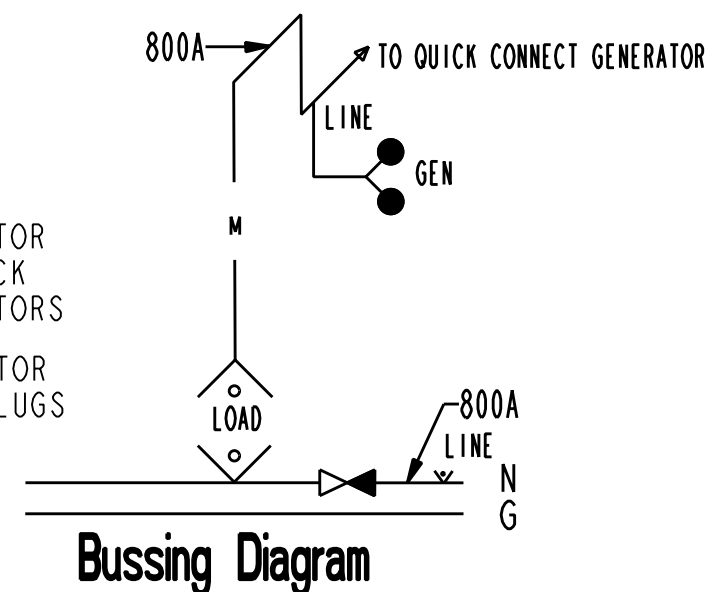
**FRONT VIEW**



**SIDE VIEW**

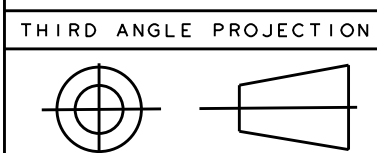


**REAR VIEW**



**Bussing Diagram**

**Rear Connected**  
 Busbar: Copper silver plated  
 Service: 480Y/277V  
 Ref Catalog Number: GQC480800R3R  
 Service: 208Y/120V  
 Ref Catalog Number: GQC208800R3R  
 AIC Rating: 65,000 Maximum  
 UL Rated



BREAKER  
 FACILITY CONNECTION PHASE LUGS

NEUTRAL BUS  
 GROUND BUS

Part must conform to SI 900000 Sect. 4, Toxicity Procedure

|   |                            |        |          |
|---|----------------------------|--------|----------|
| FOR ADDITIONAL INFO REFER TO:<br>APPLIED PRACTICES  | SIGNATURES                 |        | DATE     |
|   | MODEL                      | SIVA   | 06/01/09 |
| DIMENSIONS ARE IN INCHES<br>UNLESS OTHERWISE SPECIFIED IN DRAWING                                     | DETAIL                     | SIVA   | 06/01/09 |
|   | CHECKED                    | HASHIM | 06/01/09 |
| TOLERANCE ON:<br>1 PL DECIMALS ± 0.1<br>2 PL DECIMALS ± 0.02<br>3 PL DECIMALS ± 0.005<br>ANGLES ± 0.5 | ENGRG                      |        |          |
|   | MFG                        |        |          |
|   | QUALITY                    |        |          |
| FRACTIONS ± FINISH  | ISSUED                     |        |          |
|   | DRAWING FILE: 10093082PV20 |        |          |
| CRITICAL TO QUALITY CHARACTERISTIC  | SOLID MODEL: MODEL NAME    |        |          |

**GE Consumer & Industrial** GENERAL ELECTRIC COMPANY

TITLE  
**FRONT VIEW**  
 GenTower - 800A

|        |          |          |
|--------|----------|----------|
| SIZE   | DRAWING  | REV      |
| C      | 10093082 | 03       |
| SCALE: |          | SHEET 20 |