

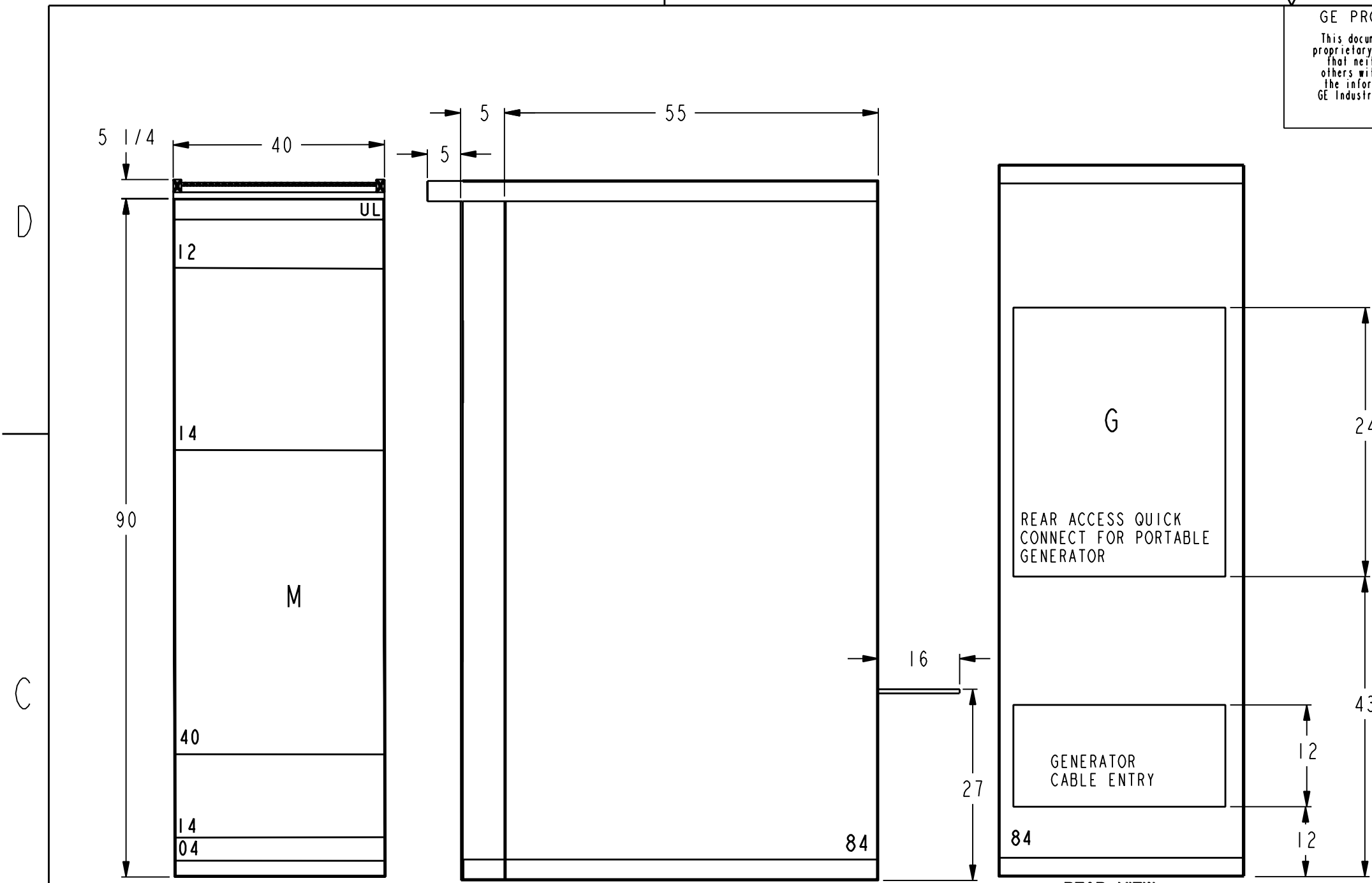
14

13

12

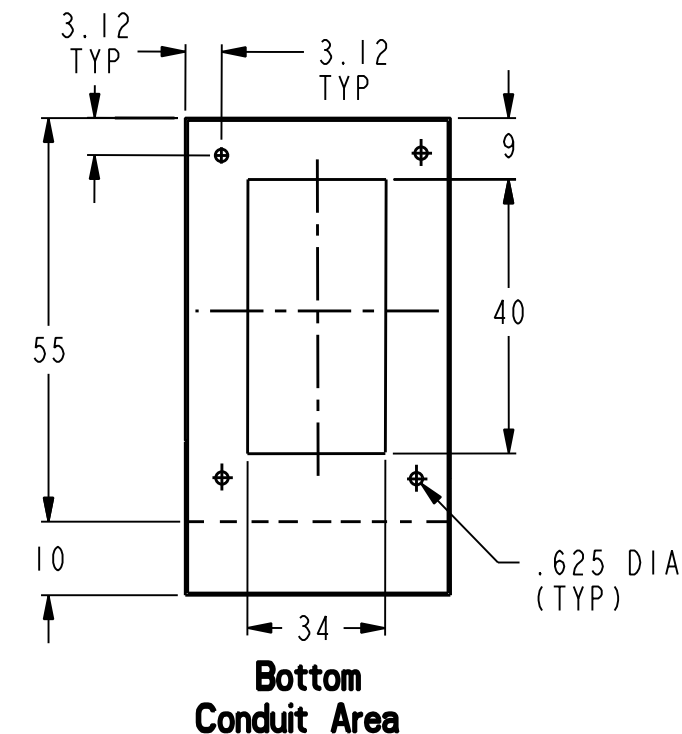
GE PROPRIETARY AND CONFIDENTIAL INFORMATION
 This document is the property of General Electric Company ("GE") and contains proprietary information of GE. This document is loaned on the express condition that neither it nor the information contained therein shall be disclosed to others without the express written consent of GE Industrial Systems, and that the information shall be used by the recipient only as approved expressly by GE Industrial Systems. This document shall be returned to GE upon its request. This document may be subject to certain restrictions under U.S. export control laws and regulations.

| REVISIONS | | | |
|-----------|-------------|----------|----------|
| REV. | DESCRIPTION | DATE | APPROVED |
| 01 | R0904149 | 06/01/09 | EM |
| 02 | R1003771 | 11/01/10 | EM |
| 03 | R1016011 | 12/16/10 | EM |



PV25

Note: - FACILITY CONNECTIONS SETUP FOR BOTTOM ENTRY/EXIT



GENERATOR CONNECTIONS:

CAM-LOCK RECEPTACLES: Hubble 400A HBLFRSC
 Qty/Phase/Color: 7/A/Brown, 7/B/Orange, 7/C/Yellow, 7/N/White, 2/Gnd/Green.
 LUGS: 350-600 kcmil, mechanical 75°C
 Qty of cable landings : 8/A, B, C, N & Gnd

FACILITY CONNECTIONS:

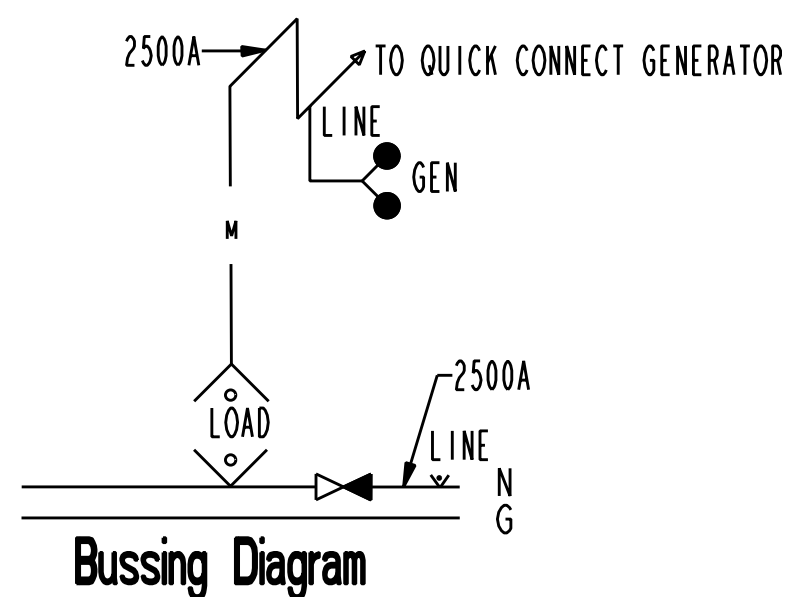
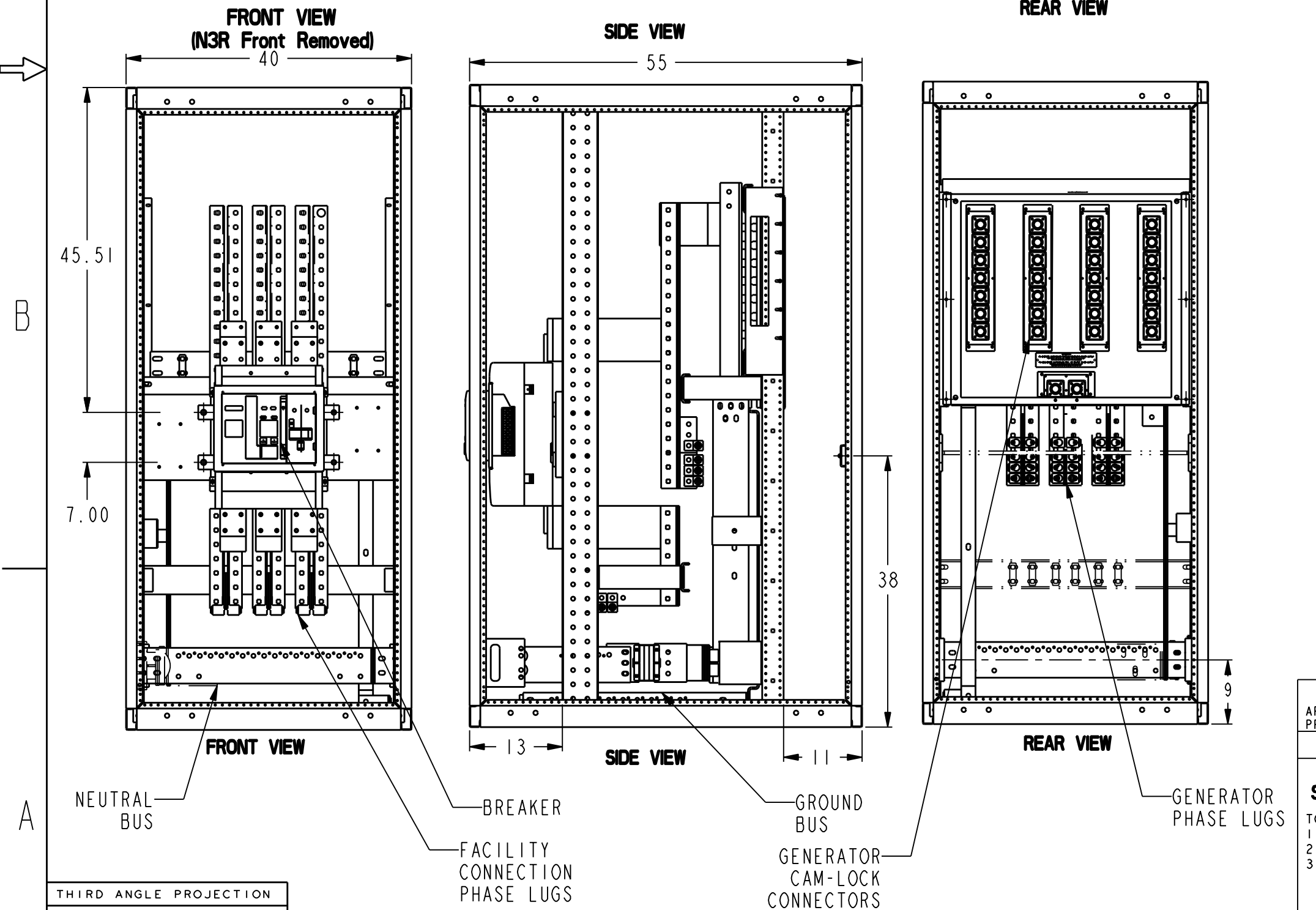
LUGS: 350-600 kcmil, mechanical 75°C
 Qty of cable landings : 8/A, B, C, N & Gnd

MAIN BREAKER:

GE PB11, 2500A, 100% Current Rated, LSIGA Entelliguard TU (gf alarm only)
 stationary mounted, kirk lock provision, bell alarm.

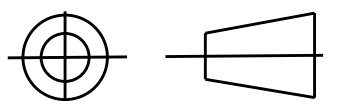
ENCLOSURE:

Nema 3R, galvanized roof, front door, rear and side covers powder coat painted ANSI 6I gray.



Rear Connected
 Busbar: Copper silver plated
 Service: 480Y/277V
 Ref Catalog Number: GQC480250R3R
 Service: 208Y/120V
 Ref Catalog Number: GQC208250R3R
 AIC Rating: 65,000 Maximum
 UL Rated

THIRD ANGLE PROJECTION



Part must conform to SI 900000
 Sect. 4, Toxicity Procedure

| | | |
|----------------------------------------------|----------------------------|----------|
| FOR ADDITIONAL INFO REFER TO: | SIGNATURES | DATE |
| APPLIED PRACTICES | MODEL SIVA | 06/01/09 |
| DIMENSIONS ARE IN INCHES | DETAIL SIVA | 06/01/09 |
| UNLESS OTHERWISE SPECIFIED IN DRAWING | CHECKED HASHIM | 06/01/09 |
| TOLERANCE ON: | ENGRG | |
| 1 PL DECIMALS ± 0.1 | MFG | |
| 2 PL DECIMALS ± 0.02 | QUALITY | |
| 3 PL DECIMALS ± 0.005 | ISSUED | |
| ANGLES ± 0.5 | | |
| FRACTIONS ± | | |
| FINISH | | |
| CRITICAL TO QUALITY CHARACTERISTIC | DRAWING FILE: 10093082PV25 | |
| | SOLID MODEL: MODEL NAME | |

GE Consumer & Industrial GENERAL ELECTRIC COMPANY

TITLE
FRONT VIEW
 GenTower - 2500A