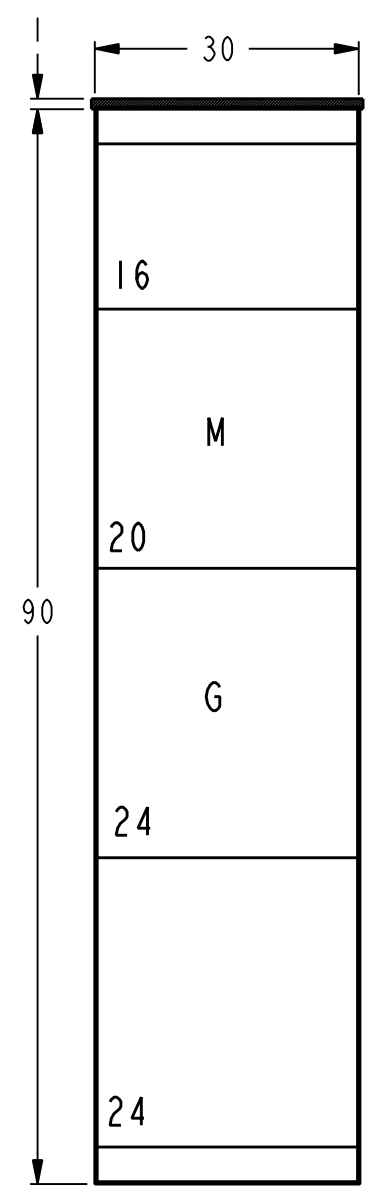
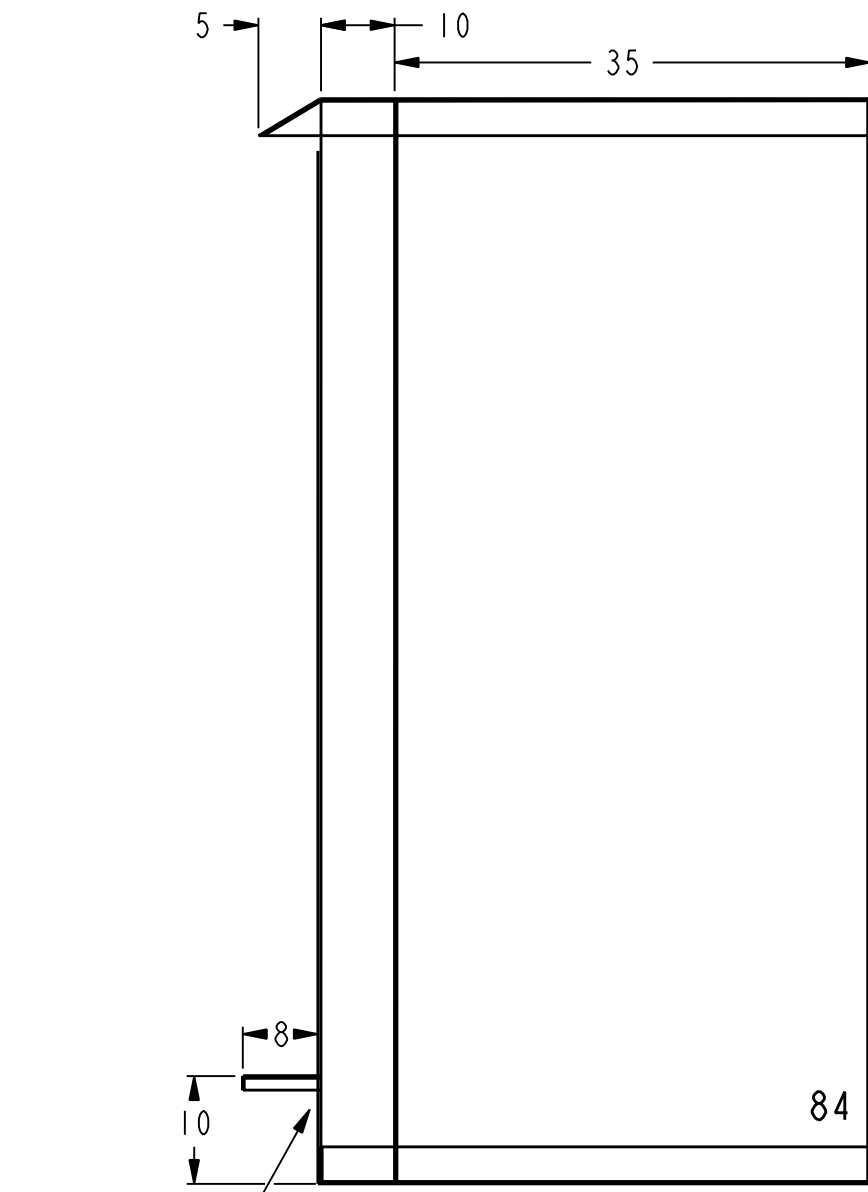


**GE PROPRIETARY AND CONFIDENTIAL INFORMATION**  
 This document is the property of General Electric Company ("GE") and contains proprietary information of GE. This document is loaned on the express condition that neither it nor the information contained therein shall be disclosed to others without the express written consent of GE Industrial Systems, and that the information shall be used by the recipient only as approved expressly by GE Industrial Systems. This document shall be returned to GE upon its request. This document may be subject to certain restrictions under U.S. export control laws and regulations.

REVISIONS			
REV.	DESCRIPTION	DATE	APPROVED
1	R0912016	08/07/09	EM
2	R1003771	09/21/10	EM



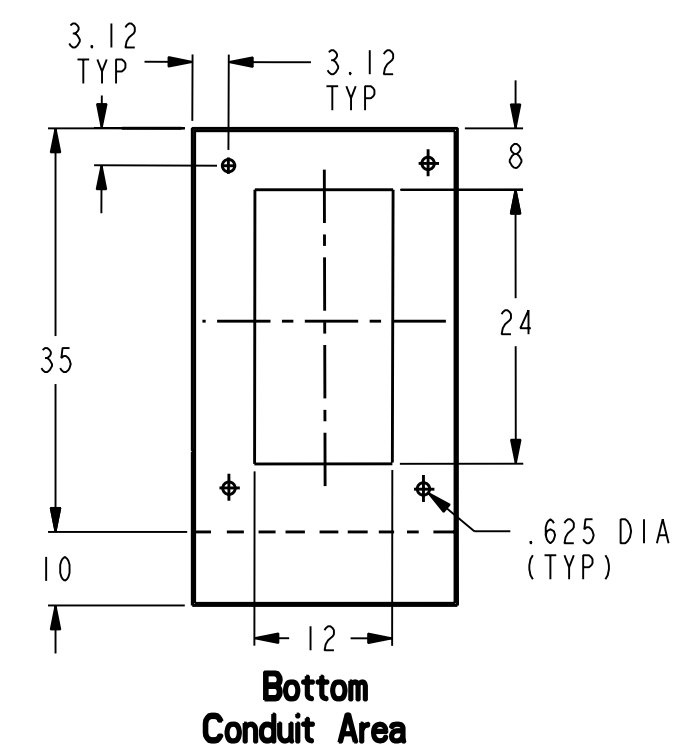
**FRONT VIEW**  
(N3R Front Removed)



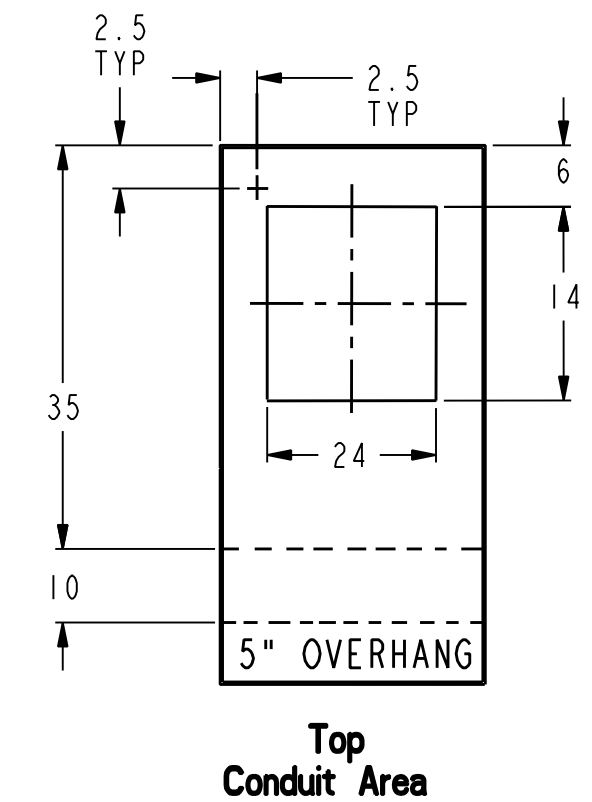
**SIDE VIEW**

GENERATOR  
CABLE  
ENTRANCE

PVI



**Bottom  
Conduit Area**



**Top  
Conduit Area**

**GENERATOR CONNECTIONS:**

CAM-LOCK RECEPTACLES: Hubble 400A HBLFRSC  
 Qty/Phase/Color: 4/A/Brown, 4/B/Orange, 4/C/Yellow, 4/N/White, 2/Gnd/Green.  
 LUGS: 350-600 kcmil, mechanical 75°C  
 Qty of cable landings : 5/A,B,C,N & Gnd

**FACILITY CONNECTIONS:**

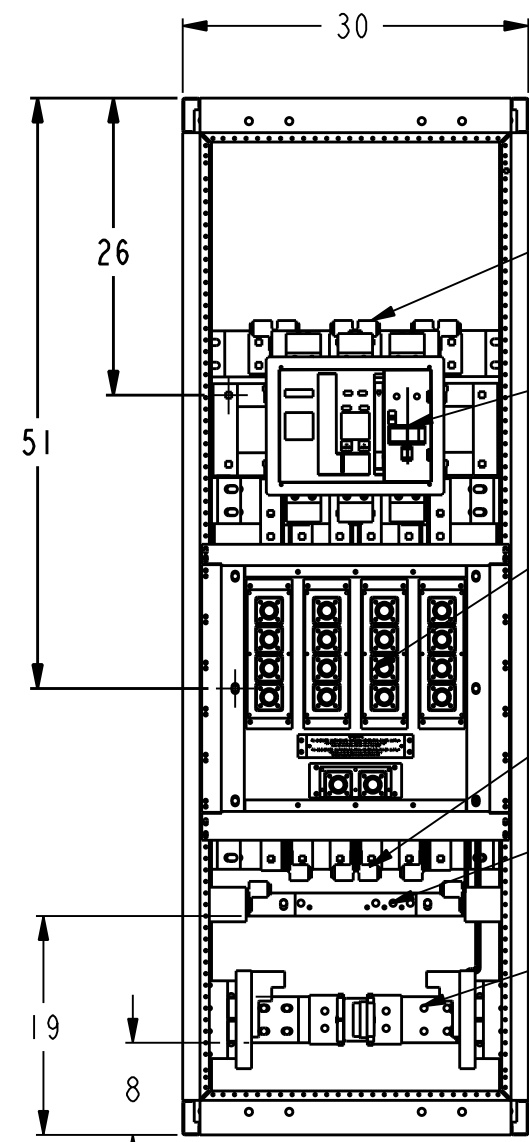
LUGS: 350-600 kcmil, mechanical 75°C  
 Qty of cable landings : 5/A,B,C,N & Gnd

**MAIN BREAKER:**

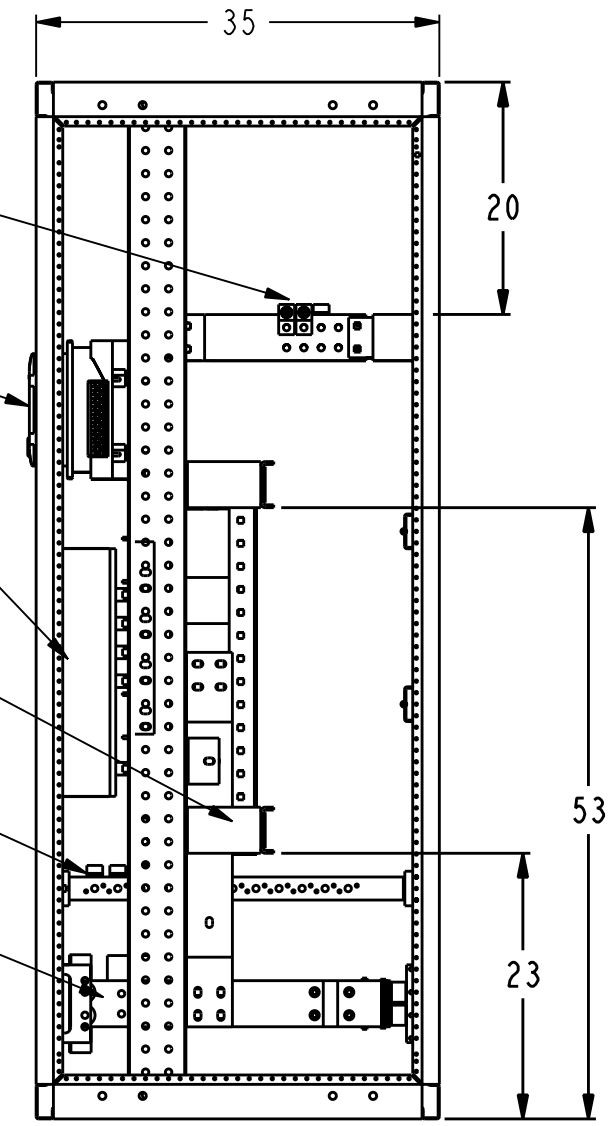
GE PB11,800A, 100% Current Rated, LSIGA Entelligence TU (gf alarm only) stationary mounted, kirk lock provision, bell alarm

**ENCLOSURE:**

Nema 3R, galvanized roof, front door, rear and side covers  
 Powder coat painted ANSI 61 gray



**FRONT VIEW**



**SIDE VIEW**

FACILITY  
CONNECTION  
PHASE LUGS

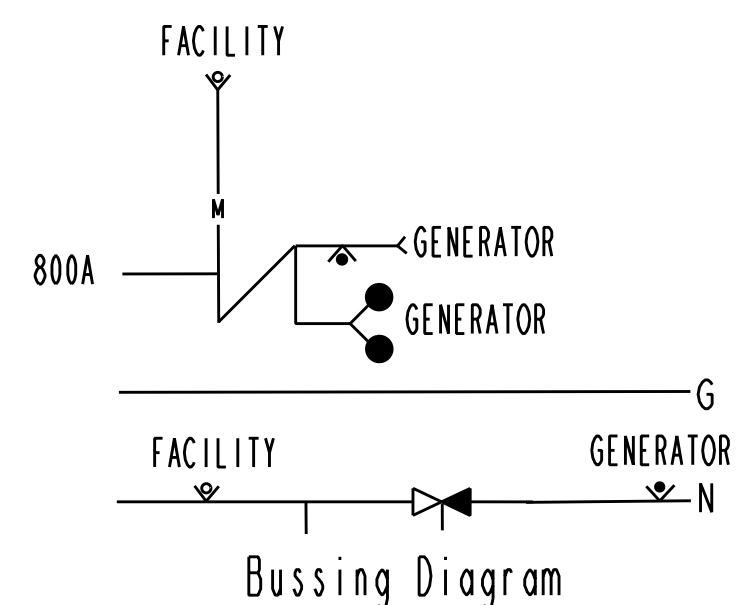
BREAKER

GENERATOR  
CAM-LOCK  
CONNECTORS

GENERATOR  
PHASE LUGS

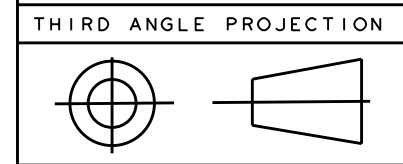
GROUND  
BUS

NEUTRAL  
BUS



**Bussing Diagram**

**Front Connected**  
 Busbar: Copper silver plated  
 Service: 480Y/277V  
 Ref Catalog Number: GQC480800F3R  
 Service: 208Y/120V  
 Ref Catalog Number: GQC208800F3R  
 AIC Rating: 65,000  
 UL Rated



Part must conform to SI 900000  
 Sect. 4, Toxicity Procedure

FOR ADDITIONAL INFO REFER TO: APPLIED PRACTICES	SIGNATURES	DATE
DIMENSIONS ARE IN INCHES	MODEL VASU	08/07/09
<b>UNLESS OTHERWISE SPECIFIED IN DRAWING</b>	DETAIL VASU	08/07/09
	CHECKED AJIT	08/07/09
	ENGRG	
TOLERANCE ON: 1 PL DECIMALS ± 0.1 2 PL DECIMALS ± 0.02 3 PL DECIMALS ± 0.005 ANGLES ± 0.5	MFG	
FRACTIONS ±	QUALITY	
FINISH	ISSUED	
CRITICAL TO QUALITY CHARACTERISTIC	DRAWING FILE: 10093095PVI	
	SOLID MODEL: MODEL NAME	

<b>GE Consumer &amp; Industrial</b>		GENERAL ELECTRIC COMPANY	
TITLE			
<b>GenTower - 800A</b>			
SIZE	DRAWING	REV	
C	10093095	2	
SCALE: DRAWING SCALE			SHEET 1