

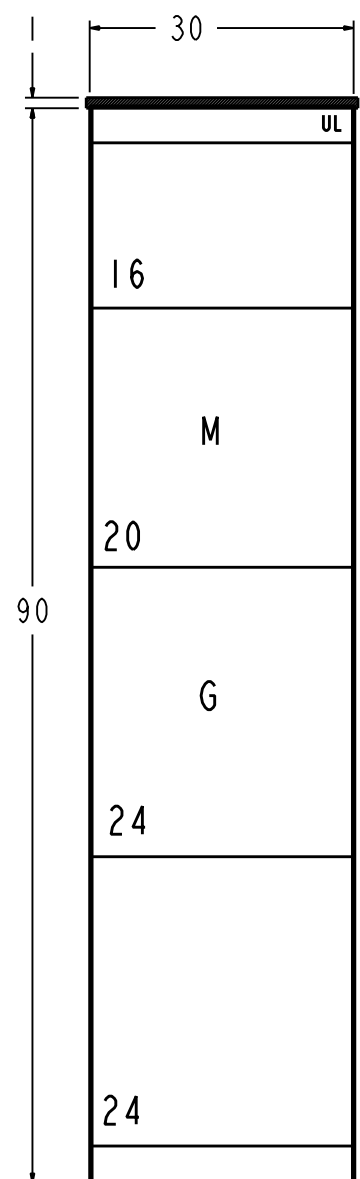
14

13

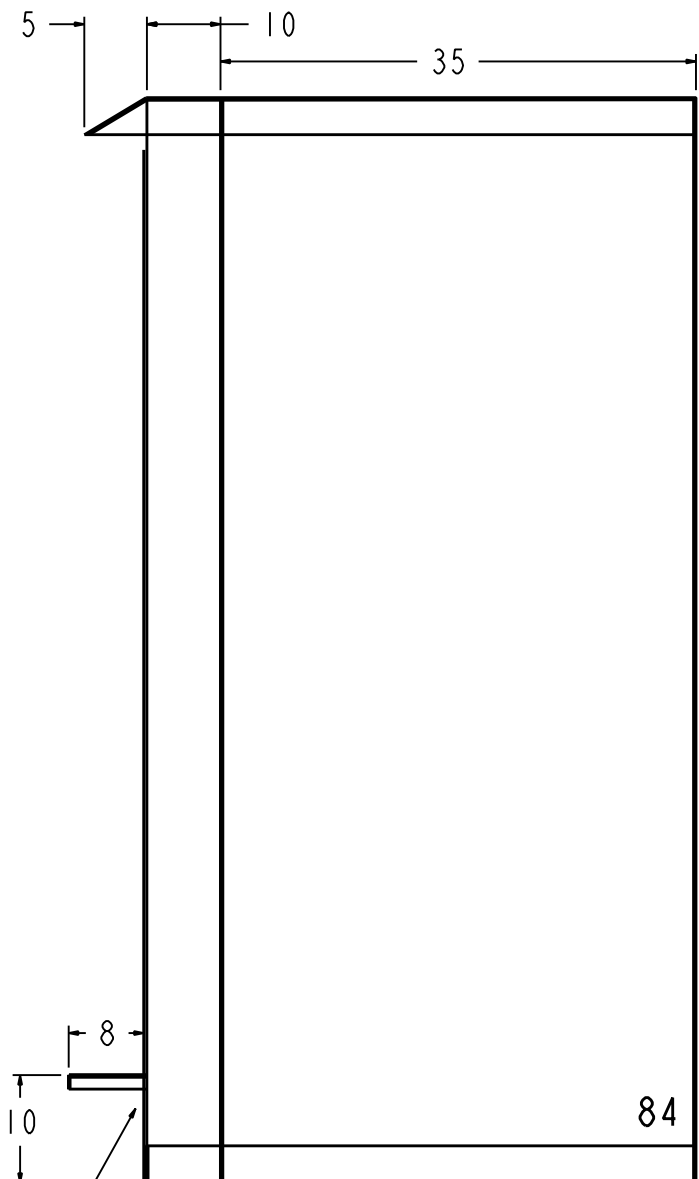
12

GE PROPRIETARY AND CONFIDENTIAL INFORMATION
 This document is the property of General Electric Company ("GE") and contains proprietary information of GE. This document is loaned on the express condition that neither it nor the information contained therein shall be disclosed to others without the express written consent of GE Industrial Systems, and that the information shall be used by the recipient only as approved expressly by GE Industrial Systems. This document shall be returned to GE upon its request. This document may be subject to certain restrictions under U.S. export control laws and regulations.

| REVISIONS | | | |
|-----------|-------------|----------|----------|
| REV. | DESCRIPTION | DATE | APPROVED |
| 1 | R0912016 | 08/07/09 | EM |
| 2 | R1003771 | 09/17/10 | EM |



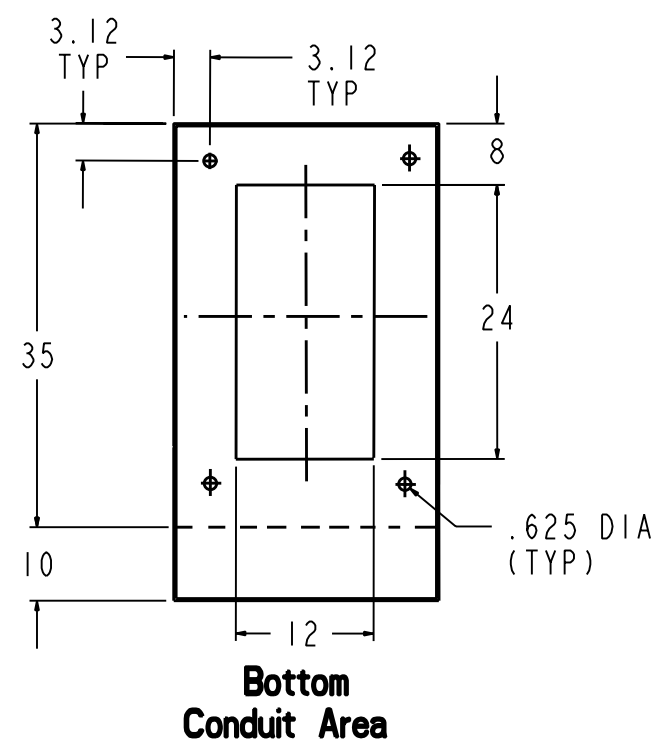
FRONT VIEW
(N3R Front Removed)



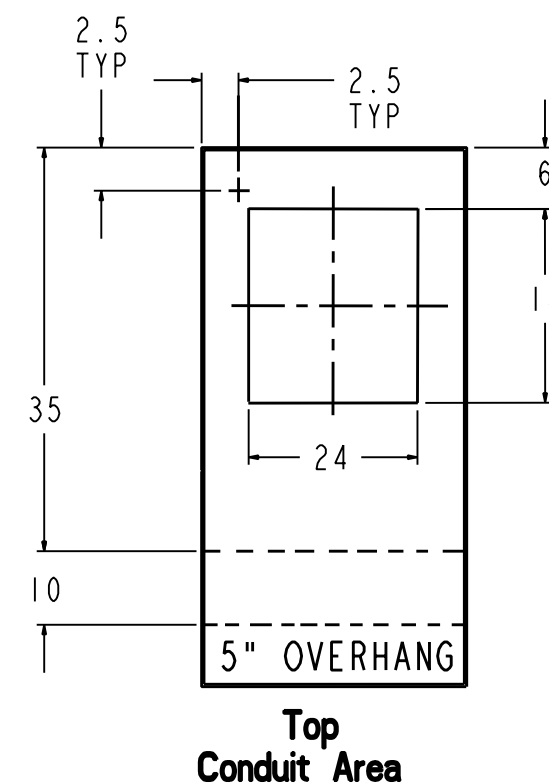
SIDE VIEW

GENERATOR
CABLE
ENTRANCE

PV4



**Bottom
Conduit Area**



**Top
Conduit Area**

GENERATOR CONNECTIONS:

CAM-LOCK RECEPTACLES: Hubble 400A HBLFRSC
 Qty/Phase/Color: 4/A/Brown, 4/B/Orange, 4/C/Yellow, 4/N/White, 2/Gnd/Green.
 LUGS: 350-600 kcmil, mechanical 75°C
 Qty of cable landings : 5/A, B, C, N & Gnd

FACILITY CONNECTIONS:

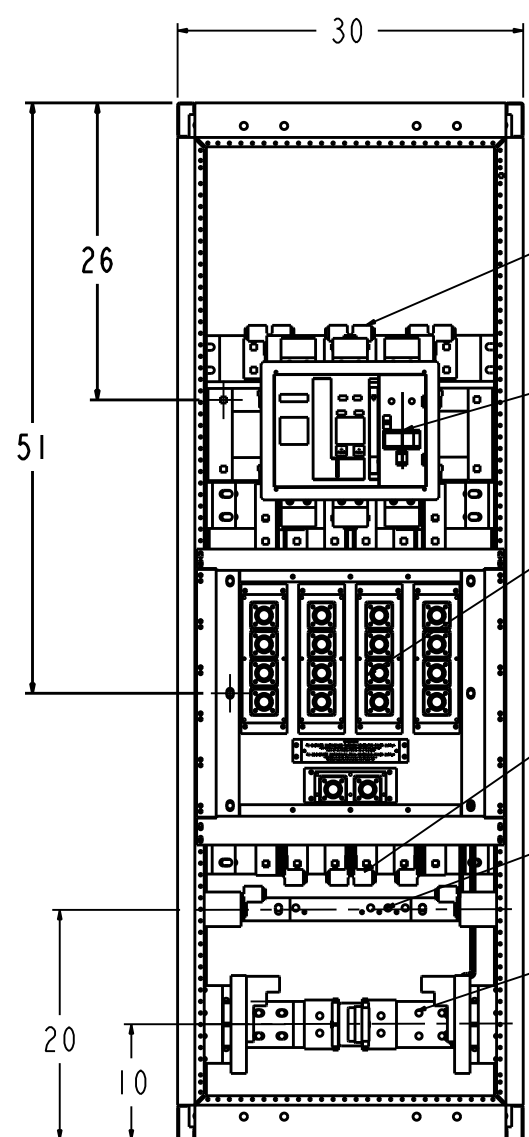
LUGS: 350-600 kcmil, mechanical 75°C
 Qty of cable landings : 5/A, B, C, N & Gnd

MAIN BREAKER:

GE PB11, 1600A, 100% Current Rated, LSIGA Entelliguard TU (gf alarm only)
 stationary mounted, kirk lock provision, bell alarm

ENCLOSURE:

Nema 3R, galvanized roof, front door, rear and side covers
 Powder coat painted ANSI 61 gray.



FRONT VIEW

FACILITY
CONNECTION
PHASE LUGS

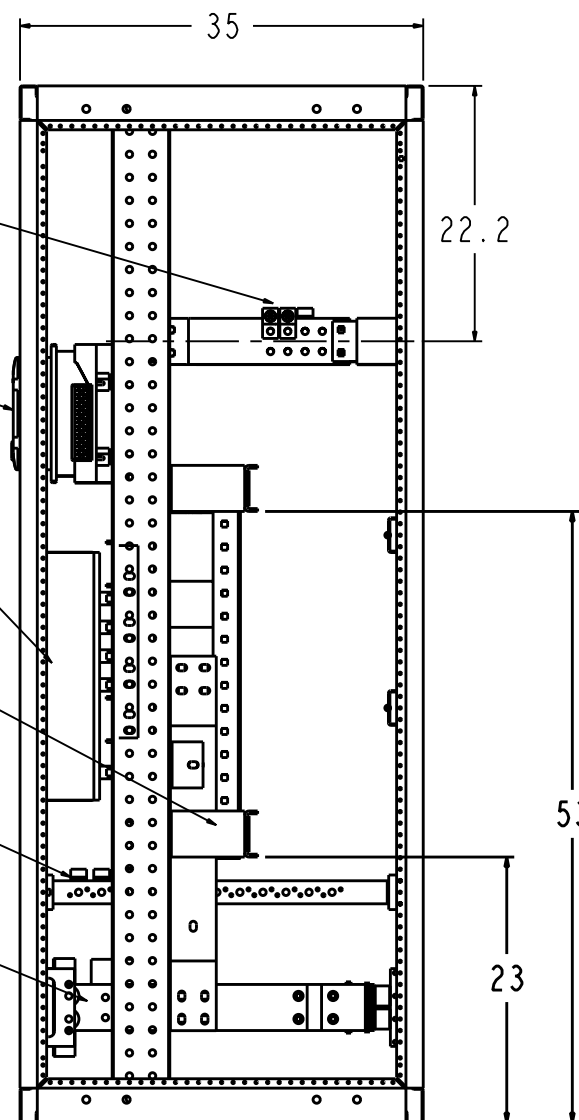
BREAKER

GENERATOR
CAM-LOCK
CONNECTORS

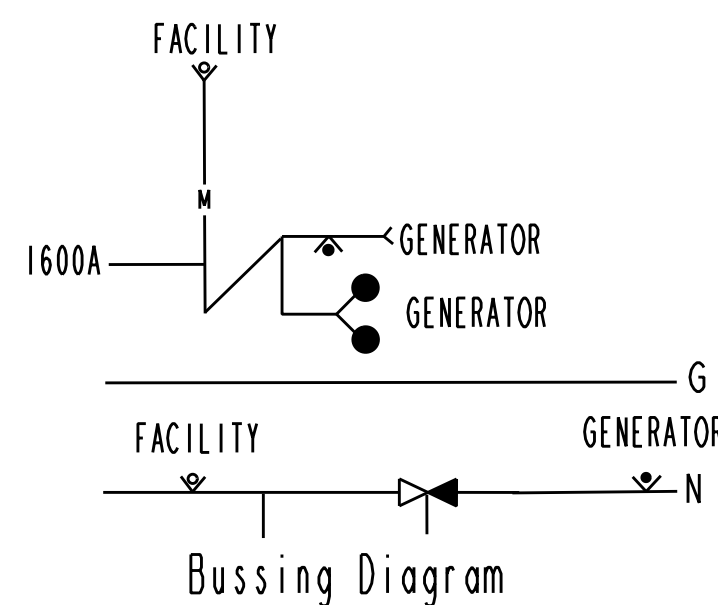
GENERATOR
PHASE LUGS

GROUND
BUS

NEUTRAL
BUS



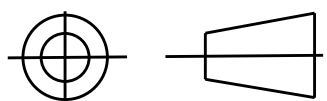
SIDE VIEW



Bussing Diagram

Front Connected
 Busbar: Copper silver plated
 Service: 480Y/277V
 Ref Catalog Number: GQC480160F3R
 Service: 208Y/120V
 Ref Catalog Number: GQC208160F3R
 AIC Rating: 65,000 Maximum
 UL Rated

THIRD ANGLE PROJECTION



Part must conform to SI 900000
 Sect. 4, Toxicity Procedure

| FOR ADDITIONAL INFO REFER TO: | SIGNATURES | DATE |
|---------------------------------------|---------------------------|----------|
| APPLIED PRACTICES | MODEL VASU | 08/07/09 |
| DIMENSIONS ARE IN INCHES | DETAIL VASU | 08/07/09 |
| UNLESS OTHERWISE SPECIFIED IN DRAWING | CHECKED AJIT | 08/07/09 |
| | ENGRG | |
| | MFG | |
| | QUALITY | |
| TOLERANCE ON: | ISSUED | |
| 1 PL DECIMALS ± 0.1 | | |
| 2 PL DECIMALS ± 0.02 | | |
| 3 PL DECIMALS ± 0.005 | | |
| ANGLES ± 0.5 | | |
| FRACTIONS ± | | |
| FINISH | | |
| CRITICAL TO QUALITY CHARACTERISTIC | DRAWING FILE: 10093095PV4 | |
| | SOLID MODEL: MODEL NAME | |

| | | | |
|-------------------------------------|----------|---------------------------------|---------|
| GE Consumer & Industrial | | GENERAL ELECTRIC COMPANY | |
| TITLE GenTower - 1600A | | | |
| SIZE | DRAWING | REV | |
| C | 10093095 | 2 | |
| SCALE: DRAWING SCALE | | | SHEET 4 |

14

13

12

11