

14

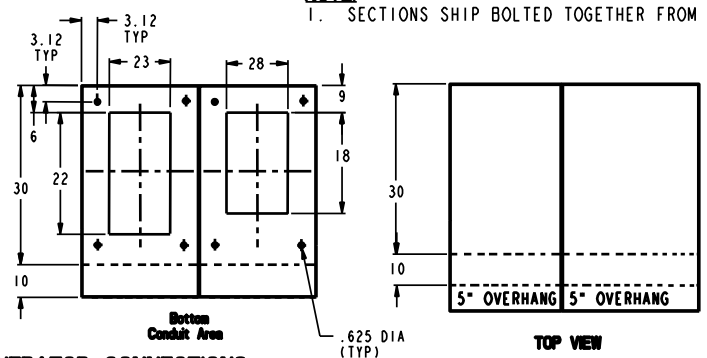
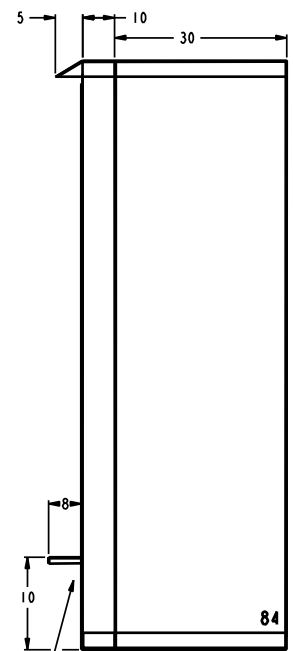
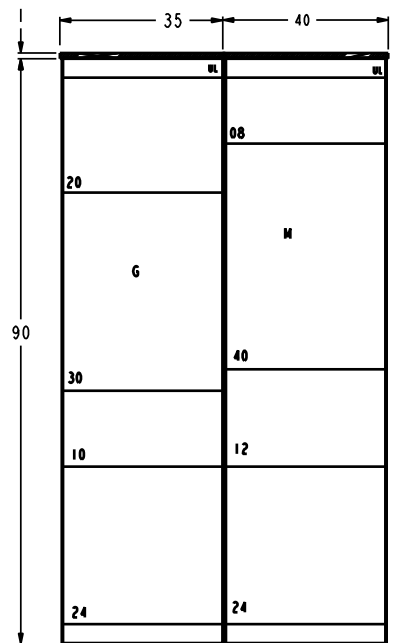
13

12

SIZE	DRAWING NO.	REV	SHEET
C	10093095	2	6
REVISIONS			
REV.	DESCRIPTION	DATE	APPROVED
1	R0912884	08/05/09	EM
2	R1003771	09/21/10	EM

GE PROPRIETARY AND CONFIDENTIAL INFORMATION
 This document is the property of General Electric Company ("GE") and contains proprietary information of GE. This document is loaned on the express condition that neither it nor the information contained therein shall be disclosed to others without the express written consent of GE Industrial Systems, and that the information shall be used by the recipient only as approved expressly by GE Industrial Systems. This document shall be returned to GE upon its request. This document may be subject to certain restrictions under U.S. export control laws and regulations.

NOTE:
 1. SECTIONS SHIP BOLTED TOGETHER FROM THE FACTORY.



GENERATOR CONNECTIONS:

CAM-LOCK RECEPTACLES: Hubble 400A HBLFRSC
 Qty/Phase/Color: 7/A/Brown, 7/B/Orange, 7/C/Yellow, 7/N/White, 2/Gnd/Green.
 LUGS: 350-600 kcmil, mechanical 75°C
 Qty of cable landings: 8/A,B,C,N & Gnd

FACILITY CONNECTIONS:

LUGS: 350-600 kcmil, mechanical 75°C
 Qty of cable landings: 8/A,B,C,N & Gnd

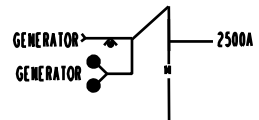
MAIN BREAKER:

GE PB11,2500A, 100% Current Rated, LSIGA Entelliguard TU (gf alarm only)
 stationary mounted, kirk lock provision, bell alarm

ENCLOSURE:

Nema 3R, galvanized roof, front door, rear and side covers
 Powder coat painted ANSI 6I gray

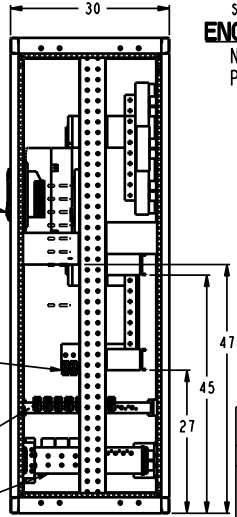
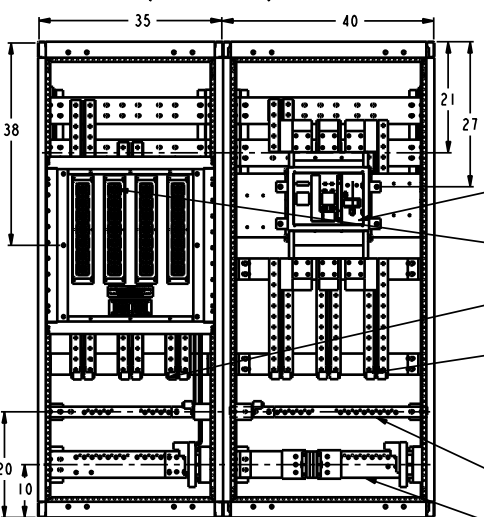
PV6



Front Connected
 Busbar: Copper silver plated
 Service: 480Y/277V
 Ref Catalog Number: GQC480250F3R
 Service: 208Y/120V
 Ref Catalog Number: GQC208250F3R
 AIC Rating: 65,000 Maximum
 UL Rated

FRONT VIEW
 (NSR Front Removed)

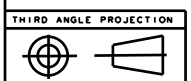
SIDE VIEW



BREAKER
 GENERATOR CAM-LOCK CONNECTORS
 GENERATOR PHASE LUGS
 FACILITY CONNECTION PHASE LUGS
 GROUND BUS
 NEUTRAL BUS

FRONT VIEW

SIDE VIEW



Part must conform to SI 900000
 Sect. 4, Toxicity Procedure

FOR ADDITIONAL INFO REFER TO:	SIGNATURES	DATE
APPLIED PRACTICES	MODEL	VASU 08/05/09
DIMENSIONS ARE IN INCHES	DETAIL	VASU 08/05/09
UNLESS OTHERWISE SPECIFIED IN DRAWING	CHECKED	AJIT 08/05/09
TOLERANCE OR:	ENGRG	
1 PL DECIMALS ± 0.1	INFG	
2 PL DECIMALS ± 0.02	QUALITY	
3 PL DECIMALS ± 0.005	ISSUED	
ANGLES ± 0.5		
FRACTIONS ±		
FINISH	DRAWING FILE: 10093095PV6	
CRITICAL TO QUALITY CHARACTERISTIC	SOLID MODEL: MODEL NAME	

GE Consumer & Industrial		GENERAL ELECTRIC COMPANY	
TITLE			
GenTower - 2500A			
SIZE	DRAWING	REV	
C	10093095	2	
SCALE: DRAWING SCALE			SHEET 6

14

13

12

11