

14

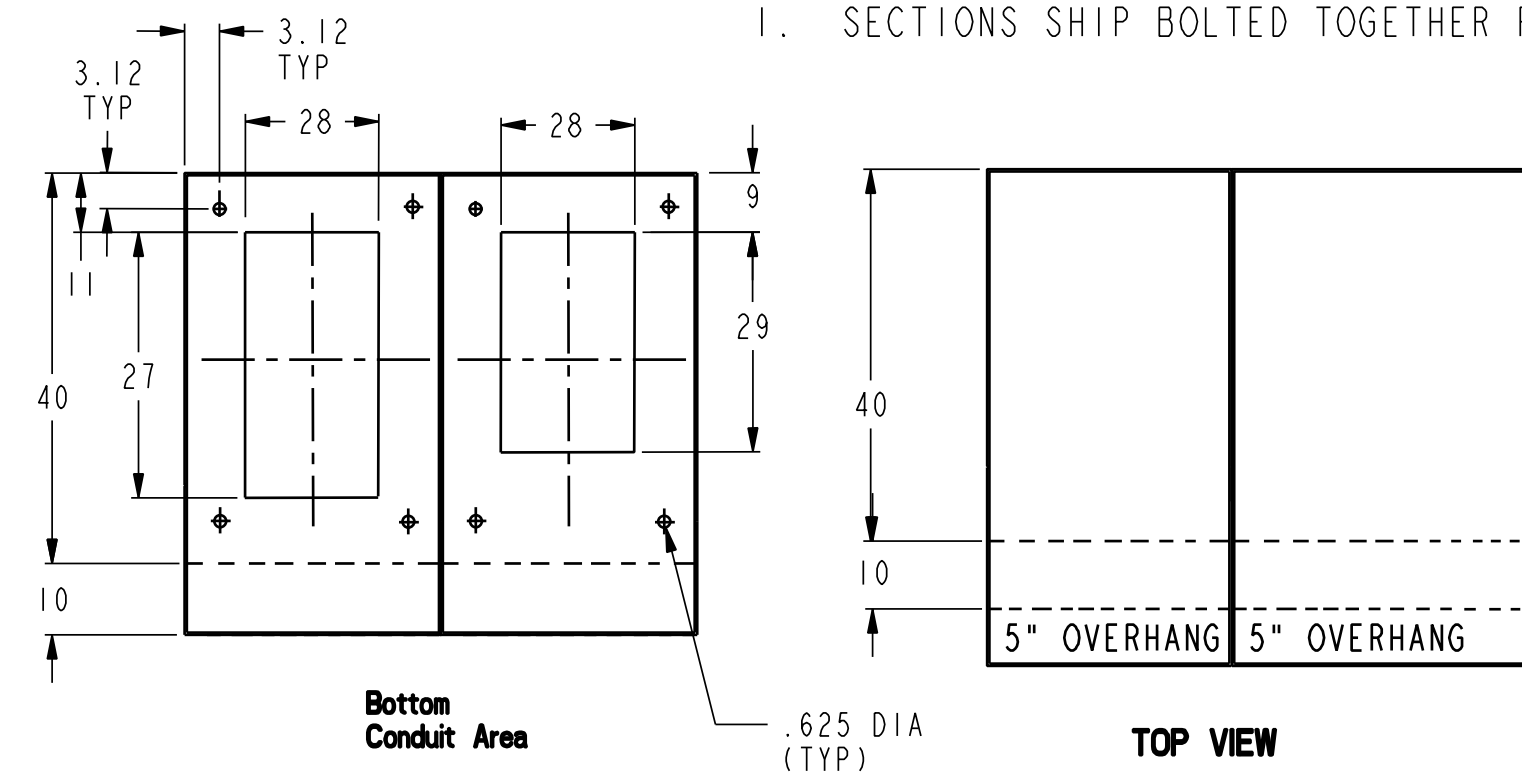
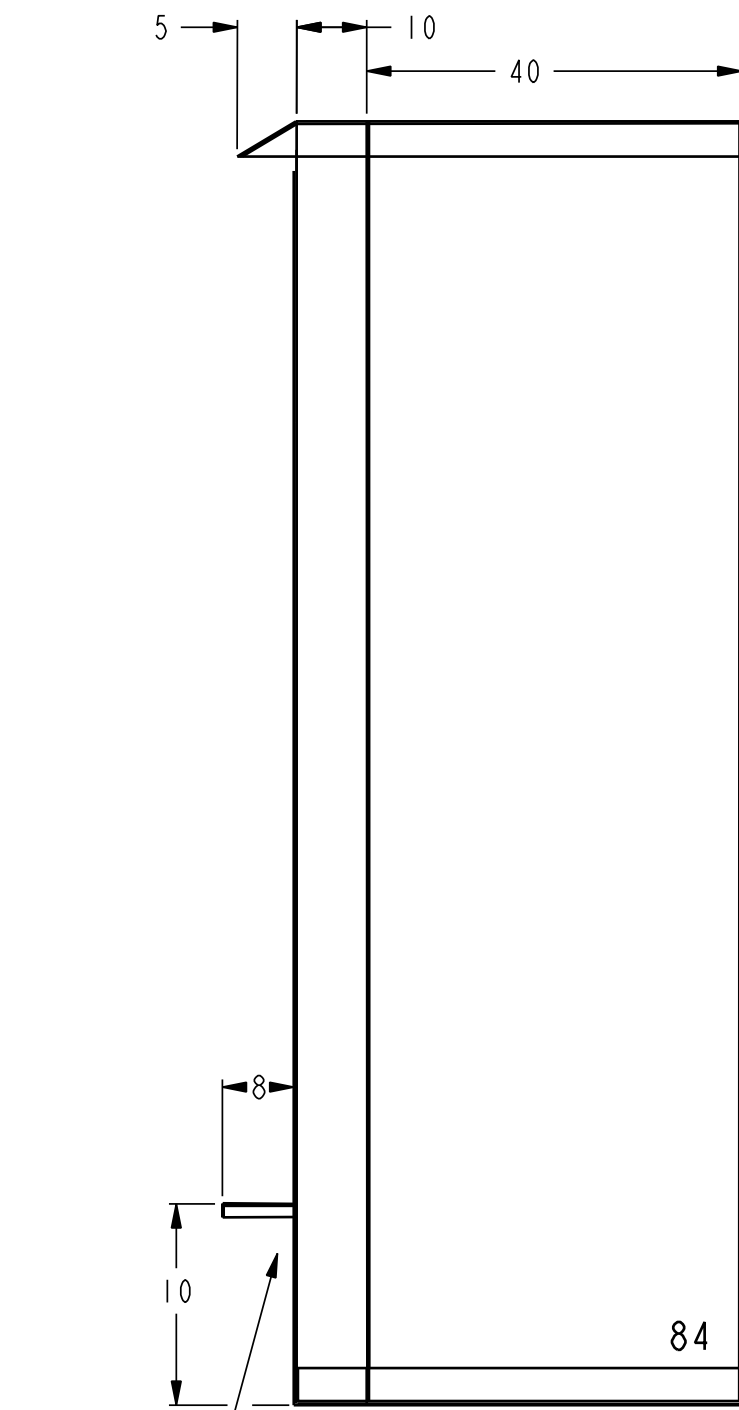
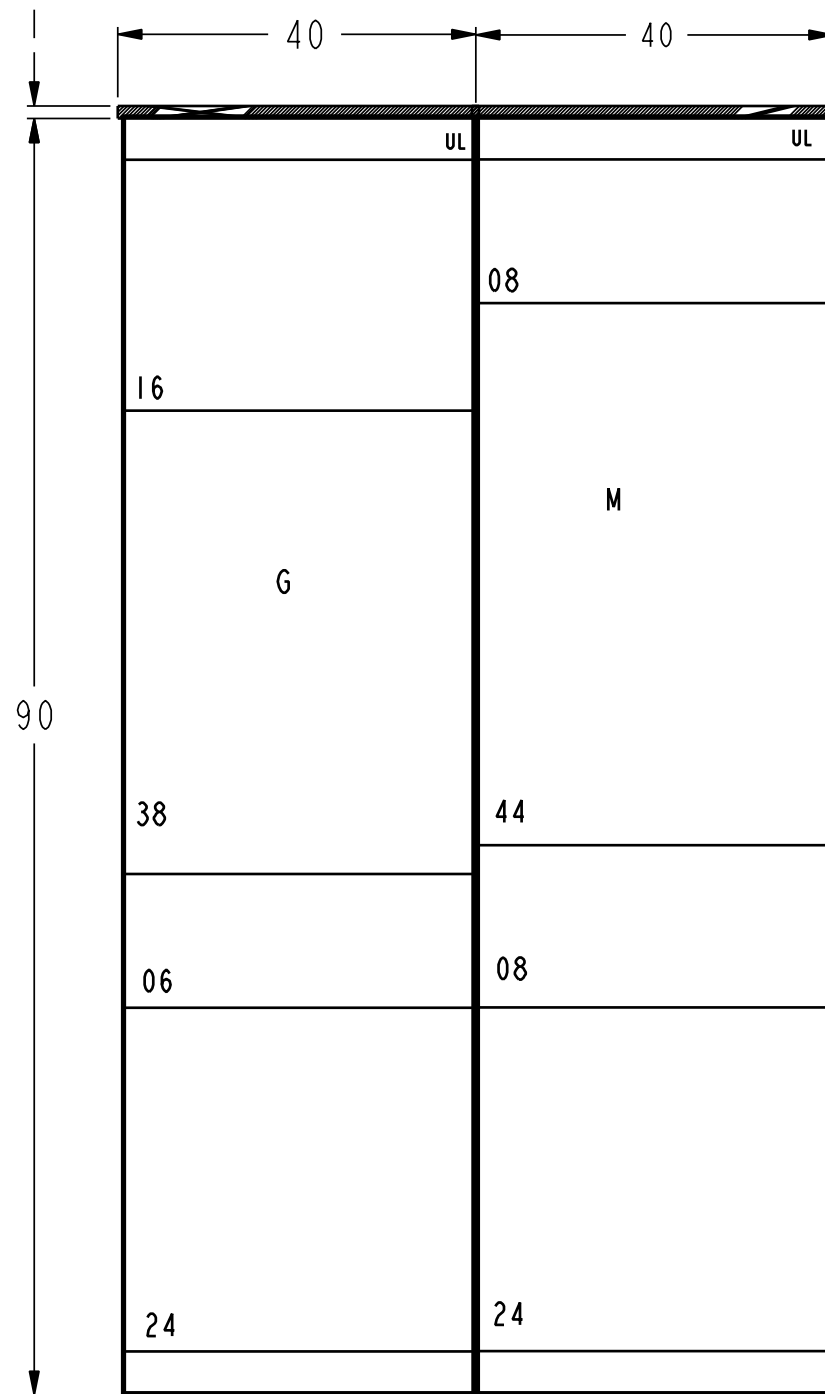
13

12

GE PROPRIETARY AND CONFIDENTIAL INFORMATION
 This document is the property of General Electric Company ("GE") and contains proprietary information of GE. This document is loaned on the express condition that neither it nor the information contained therein shall be disclosed to others without the express written consent of GE Industrial Systems, and that the information shall be used by the recipient only as approved expressly by GE Industrial Systems. This document shall be returned to GE upon its request. This document may be subject to certain restrictions under U.S. export control laws and regulations.

REVISIONS			
REV.	DESCRIPTION	DATE	APPROVED
1	R0912884	09/25/09	EM
2	R1003771	09/21/10	EM
3	R1202275	02/10/12	BCH

NOTE:
 1. SECTIONS SHIP BOLTED TOGETHER FROM THE FACTORY.



GENERATOR CONNECTIONS:

CAM-LOCK RECEPTACLES: Hubble 400A HBLFRSC
 Qty/Phase/Color: 10/A/Brown, 10/B/Orange, 10/C/Yellow, 10/N/White, 2/Gnd/Green.
 LUGS: 350-600 kcmil, mechanical 75°C
 Qty of cable landings: 12/A, B, C, N & Gnd

FACILITY CONNECTIONS:

LUGS: 350-600 kcmil, mechanical 75°C
 Qty of cable landings: 12/A, B, C, N & Gnd

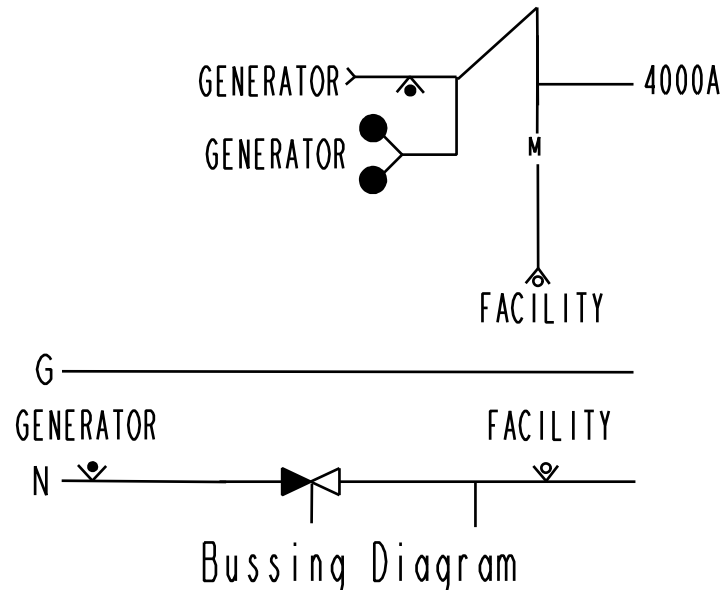
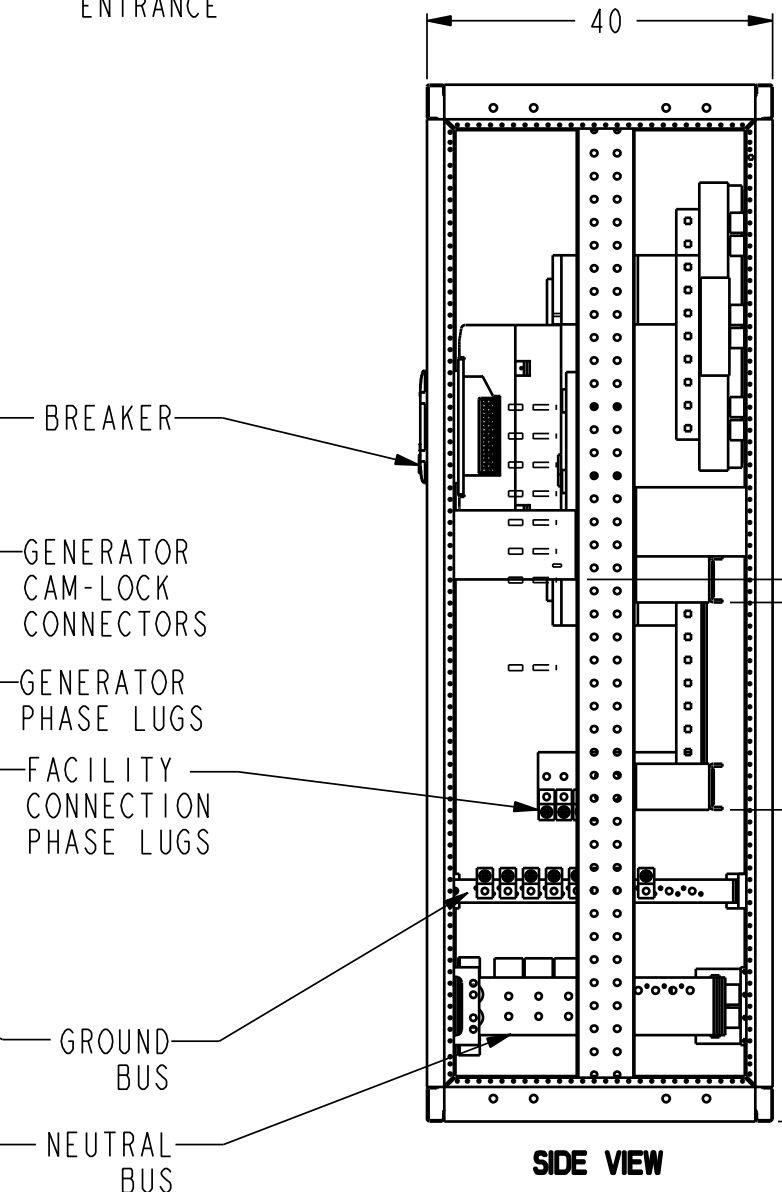
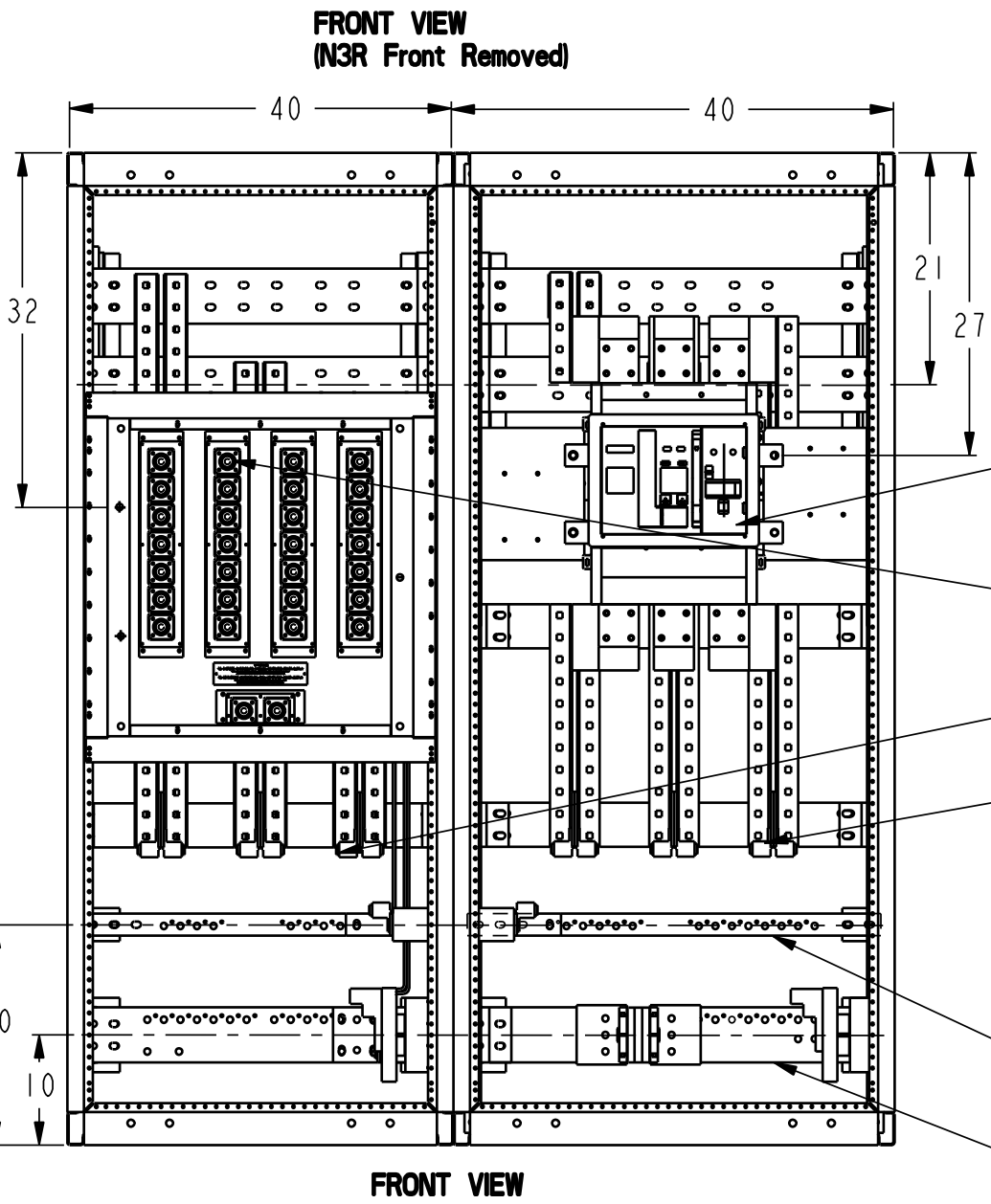
MAIN BREAKER:

GE PB11, 4000A, 100% Current Rated, LSIGA Entelliguard TU (gf alarm only)
 Drawout Construction, kirk lock provision, bell alarm.

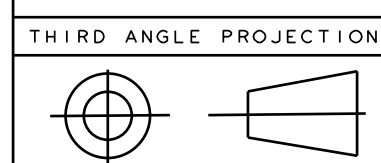
ENCLOSURE:

NEMA 3R, galvanized roof, front door, rear and side covers
 Powder coated painted ANSI 61 gray.

PV8



Front Connected
 Busbar: Copper silver plated
 Service: 480Y/277V
 Ref Catalog Number: GQC480400F3R
 Service: 208Y/120V
 Ref Catalog Number: GQC208400F3R
 AIC Rating: 65,000 Maximum
 UL Rated



Part must conform to SI 900000 Sect. 4, Toxicity Procedure

FOR ADDITIONAL INFO REFER TO: APPLIED PRACTICES	SIGNATURES	DATE
	MODEL VASU	09/25/09
	DETAIL VASU	09/25/09
	CHECKED AJIT	09/25/09
UNLESS OTHERWISE SPECIFIED IN DRAWING	ENGRG	
	MFG	
	QUALITY	
	ISSUED	
TOLERANCE ON: 1 PL DECIMALS ± 0.1 2 PL DECIMALS ± 0.02 3 PL DECIMALS ± 0.005 ANGLES ± 0.5 FRACTIONS ± FINISH	DRAWING FILE: 10093095PV8	
CRITICAL TO QUALITY CHARACTERISTIC	SOLID MODEL: MODEL NAME	

GE Consumer & Industrial		GENERAL ELECTRIC COMPANY	
TITLE			
GenTower - 4000A			
SIZE	DRAWING	REV	
C		10093095	2
SCALE: DRAWING SCALE			SHEET 8

14

13

12

11