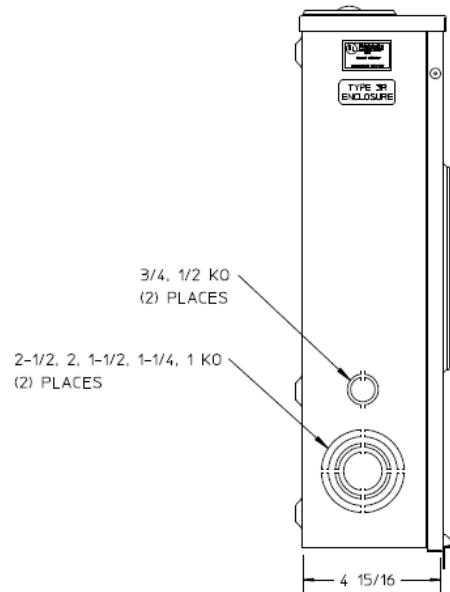
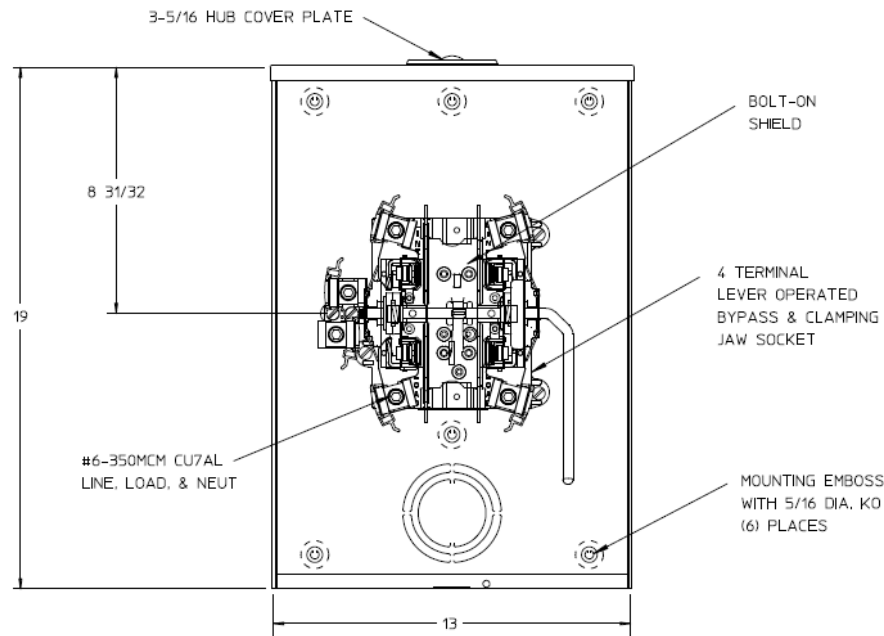


### Left Side View



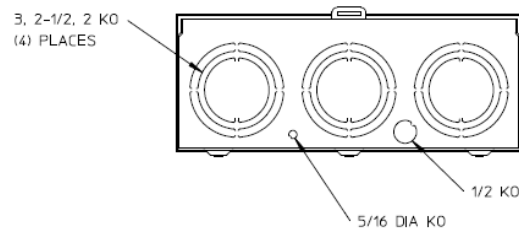
### Front View Interior



### Notes

- 1) FINISH: GRAY
- 2) CABINET: 16 GA GALV. STEEL
- 3) 200 AMP CONTINUOUS  
600 VAC, 1 PHASE, 3 WIRE  
200 AMP BYPASS
- 4) TEMPORARY CARDBOARD METER  
OPENING COVER SUPPLIED
- 5) MIDWEST LABEL ATTACHED TO THE  
END OF THE CARTON
- 6) MIDWEST LOGO LOCATED IN THE LOWER  
LEFT-HAND CORNER OF THE FRONT

### Bottom View



METER SKT-(1) 200A 600V 1P3W G90 N3R 4-TRM SMALL  
HUBCVPL LVR BYP TOP/BOT FEED DECO APPROVED

CAT NO	DWG DATE	REV #
1009995MEP	10/14/2016	01