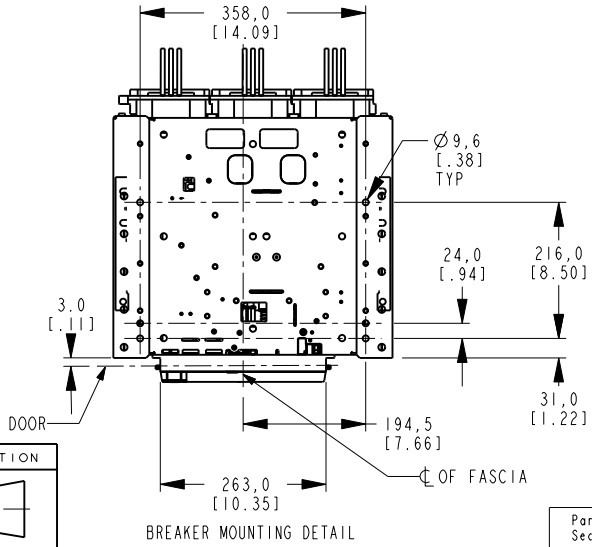
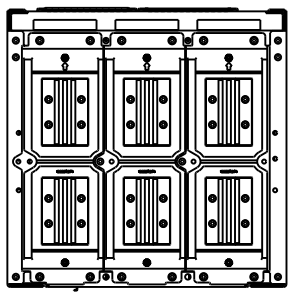
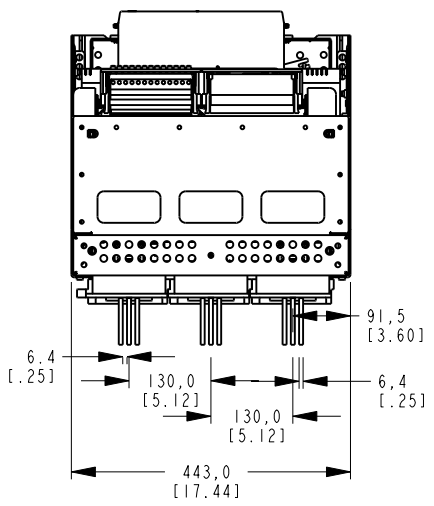


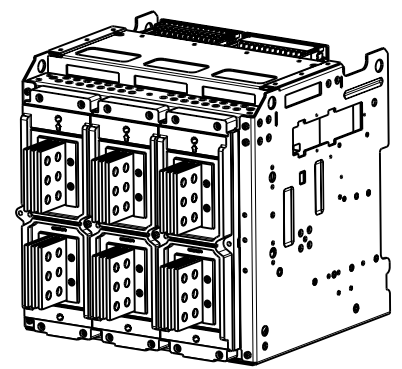
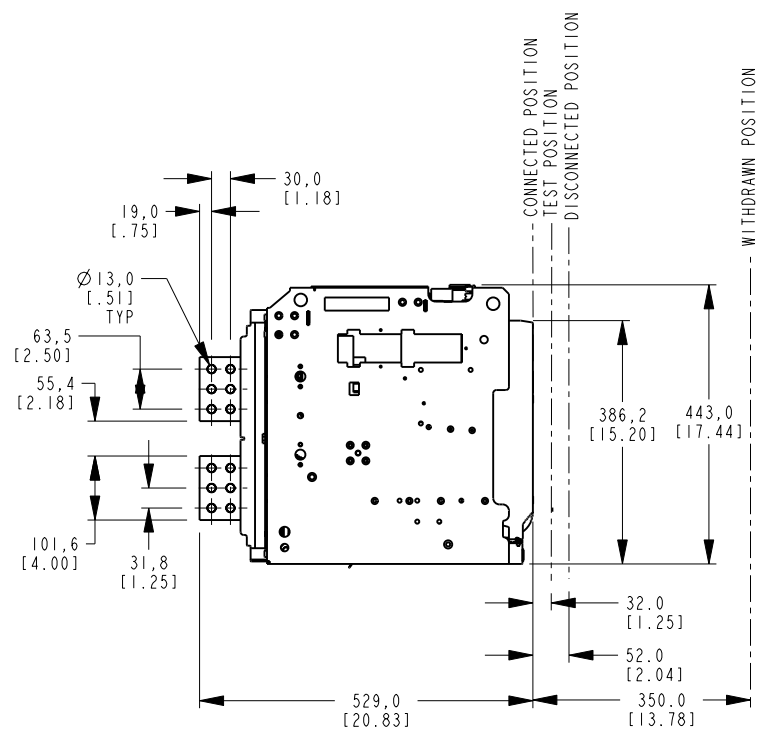
SIZE: DRAWING NO. 10101391 I I
 SHEET REV. A3

GE PROPRIETARY AND CONFIDENTIAL INFORMATION
 This document is the property of General Electric Company ("GE") and contains proprietary information of GE. This document is loaned on the express condition that neither it nor the information contained therein shall be disclosed to others without the express written consent of GE Industrial Systems, and that the information shall be used by the recipient only as approved expressly by GE Industrial Systems. This document shall be returned to GE upon its request. This document may be subject to certain restrictions under U.S. export control laws and regulations.

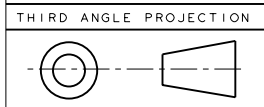
REVISIONS			
REV.	DESCRIPTION	DATE	APPROVED
1	R0818652	04/11/08	



Part must conform to SI 900000 Sect. 4, Toxicity Procedure



NOTE:
 COPPER WORK MUST BE SUPPORTED WITHIN 200mm(7.87inch)
 OF BREAKER CONNECTIONS - BUS BAR OR CABLES
 ALL CONNECTIONS TO BE TIGHTENED TO 50Nm (442.5 Lb-inch) TORQUE



FOR ADDITIONAL INFO REFER TO:	SIGNATURES		DATE
APPLIED PRACTICES	MODEL	ANANT	04/11/08
DIMENSIONS ARE IN MILLIMETERS	DETAIL	ANANT	04/11/08
UNLESS OTHERWISE SPECIFIED IN DRAWING	CHECKED		
TOLERANCE ON:	ENGRG		
1 PL DECIMALS ± 0.3	MFG		
2 PL DECIMALS ± 0.13	QUALITY		
ANGLES ± 0.5	ISSUED		
FRACTIONS ±			
FINISH			
CRITICAL TO QUALITY CHARACTERISTIC	DRAWING FILE:	10101391PVI	
	SOLID MODEL:	10101391PVI	

GE Consumer & Industrial GENERAL ELECTRIC COMPANY	TITLE		REV
	ANSI/UL489, 3 POLE, DRAWOUT		1
		2000A, TYPE E,M	
		EntelliGuard G LVPCB	
SIZE	DRAWING	10101391	
A3			
SCALE: 0.125	REF. No.:		
		SHEET 1 of 1	

METRIC