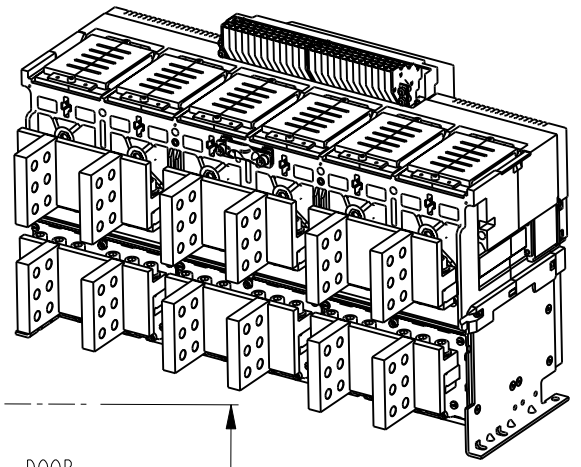
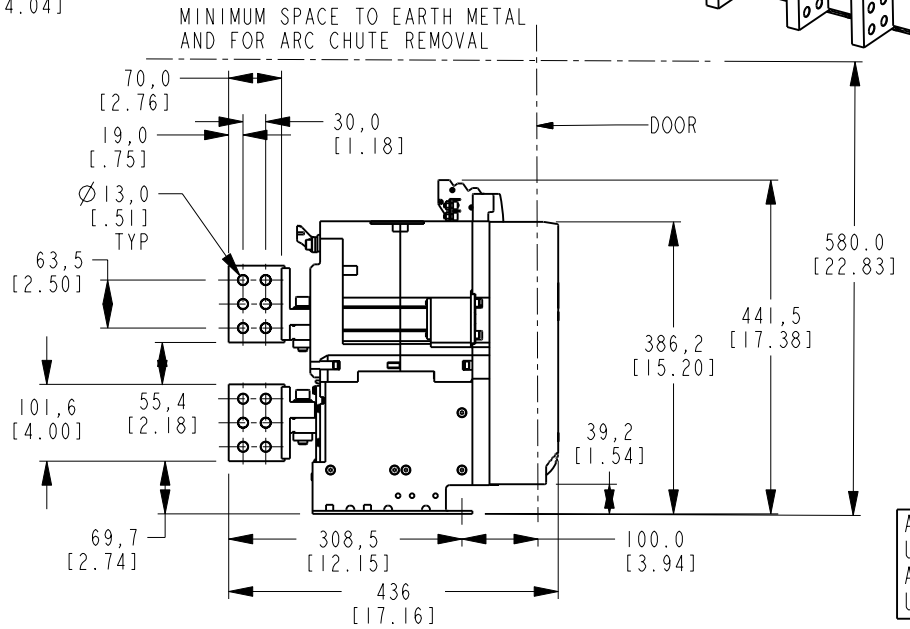
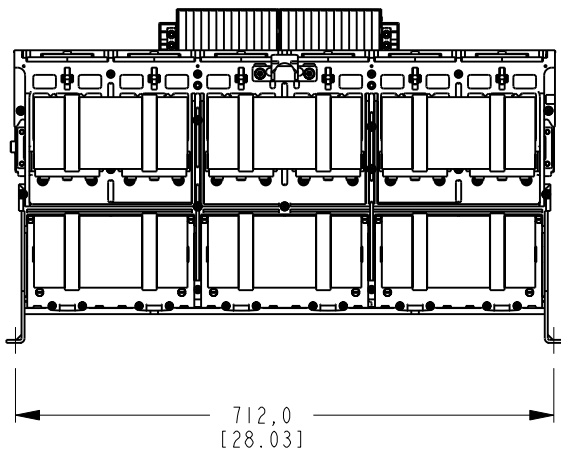
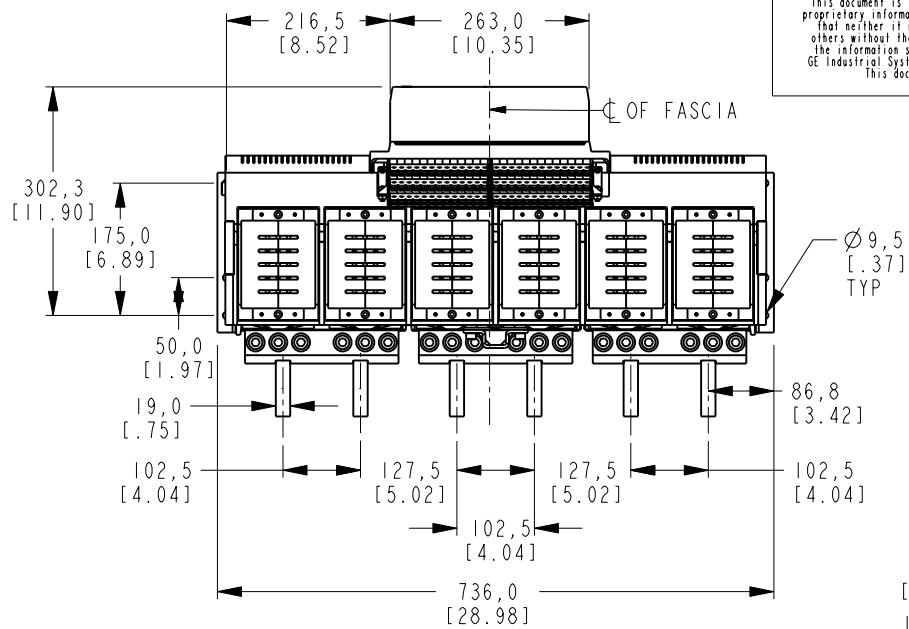


SHEET
REV
10101399
SIZE DRAWING NO.
A3

GE PROPRIETARY AND CONFIDENTIAL INFORMATION
 This document is the property of General Electric Company ("GE") and contains proprietary information of GE. This document is loaned on the express condition that neither it nor the information contained therein shall be disclosed to others without the express written consent of GE Industrial Systems, and that the information shall be used by the recipient only as approved expressly by GE Industrial Systems. This document shall be returned to GE upon its request. This document may be subject to certain restrictions under U.S. export control laws and regulations.

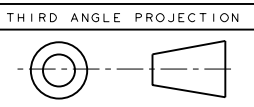
REVISIONS			
REV.	DESCRIPTION	DATE	APPROVED
1	R0818652	04/15/08	



PVI

ANSI, 3200A, TYPE A,L
 UL489, 3000A, TYPE E,L
 ANSI, 4000A, TYPE M,B,L
 UL489, 4000A, TYPE M,B,L

NOTE:
 COPPER MUST BE SUPPORTED WITHIN 200 mm (7.87 inch)
 OF BREAKER CONNECTIONS - BUSBAR OR CABLES
 ALL CONNECTIONS TO BE TIGHTENED TO 50 Nm (442.5 Lb-inch) TORQUE



Part must conform to SI 900000 Sect. 4, Toxicity Procedure

FOR ADDITIONAL INFO REFER TO:	SIGNATURES	DATE
APPLIED PRACTICES	MODEL	REKHA 04/15/08
DIMENSIONS ARE IN MILLIMETERS	DETAIL	SHRINIVAS 04/15/08
UNLESS OTHERWISE SPECIFIED IN DRAWING	CHECKED	-
TOLERANCE ON:	ENGRG	-
1 PL DECIMALS ± 0.3	MFG	-
2 PL DECIMALS ± 0.13	QUALITY	-
ANGLES ± 0.5	ISSUED	-
FRACTIONS ±		
FINISH		
CRITICAL TO QUALITY CHARACTERISTIC	DRAWING FILE:	10101399PVI
	SOLID MODEL:	10101399PVI

GE GE Consumer & Industrial GENERAL ELECTRIC COMPANY

ANSI/UL489, 3 POLE FIXED/STATIONARY

EntelliGuard G LVPCB

SIZE	DRAWING	REV
A3	10101399	1

SCALE: 0.150 REF. No: . SHEET 1 of 1

METRIC

METRIC