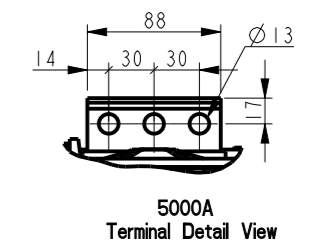
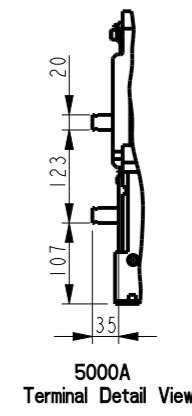
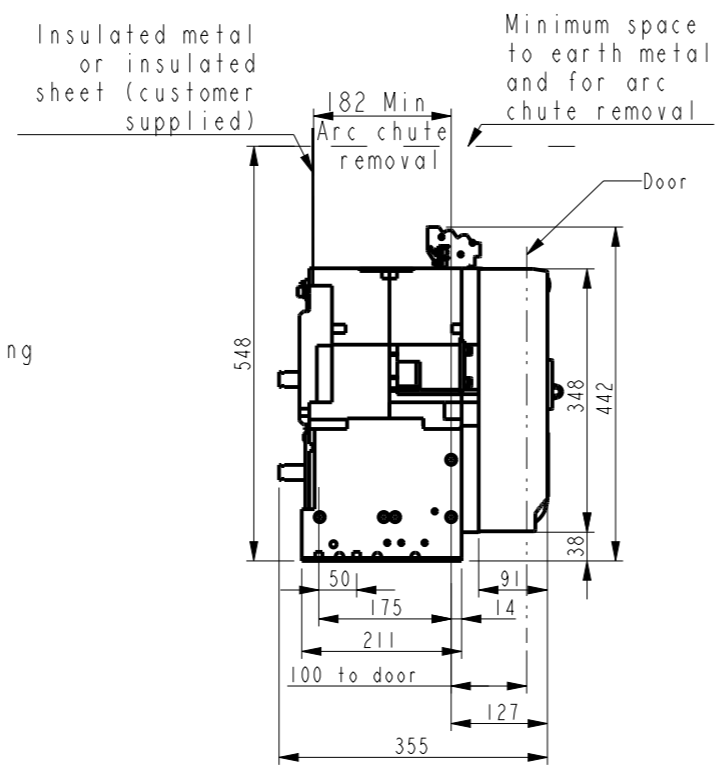
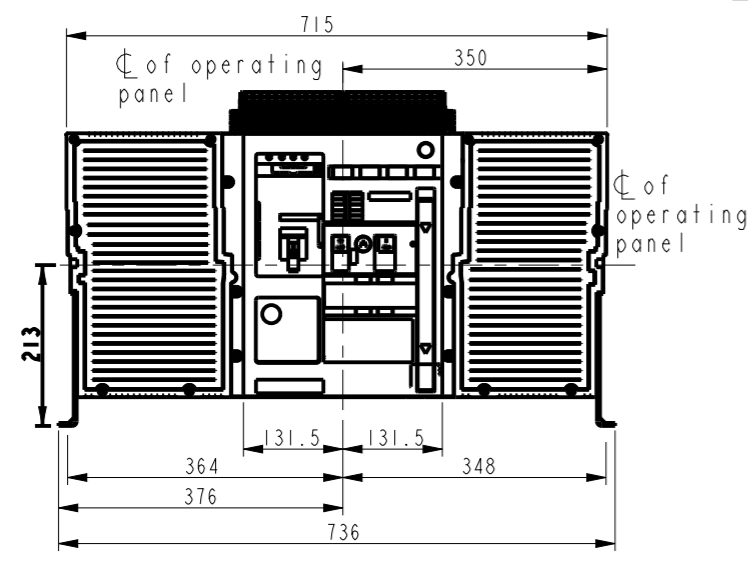


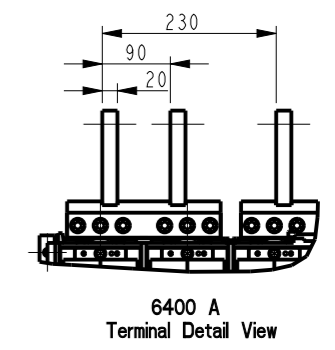
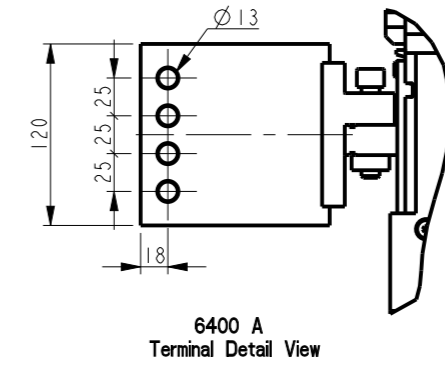
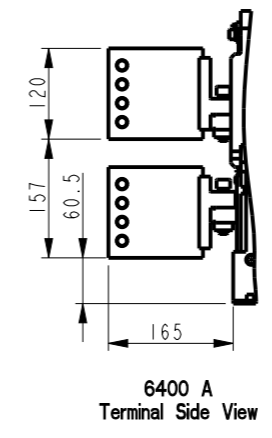
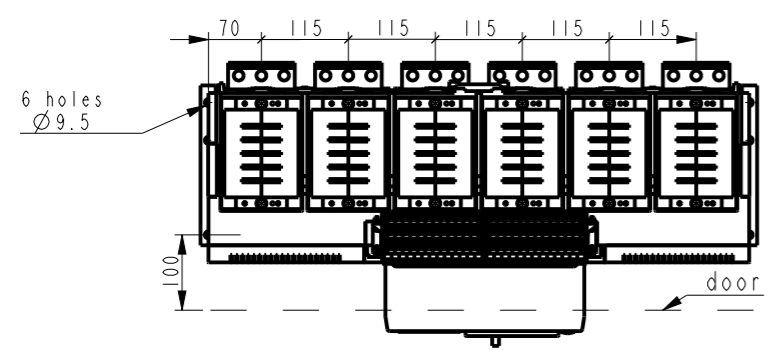
GE PROPRIETARY AND CONFIDENTIAL INFORMATION
 This document is the property of General Electric Company ("GE") and contains proprietary information of GE. This document is loaned on the express condition that neither it nor the information contained therein shall be disclosed to others without the express written consent of GE Energy, and that the information shall be used by the recipient only as approved expressly by GE Energy. This document shall be returned to GE upon its request. This document may be subject to certain restrictions under U.S. export control laws and regulations.

REVISIONS				
REV.	DESCRIPTION	DATE	APPROVED	
2	C009606	12/30/2015	JOBY	
3	C035056	RAGHAV 01/11/2018	SANDEEP	
4	C046810	RAGHAV 06/07/2018	GUPTA	

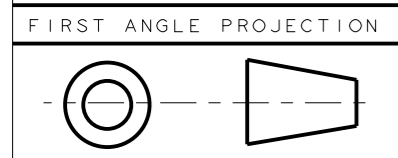
METRIC



STANDARD CONNECTION PADS
 HORIZONTAL MAXIMUM 5000A



STANDARD CONNECTION PADS
 VERTICAL MAXIMUM 6400A



Article or Material Must Conform to REACH Procedure SI900000 Sec. 14
 Article or Material Must Conform to RoHS Procedure SI900000 Sec. 13

Part must conform to SI 900000 Sect. 4, Toxicity Procedure

PV1

FOR ADDITIONAL INFO REFER TO:	SIGNATURES		DATE
APPLIED PRACTICES	MODEL	SHANKARAGOUDA	
DIMENSIONS ARE IN MILLIMETERS	DETAIL		
UNLESS OTHERWISE SPECIFIED IN DRAWING	CHECKED		
TOLERANCE ON:	ENGRG		
1 PL DECIMALS ± 0.3	MFG		
2 PL DECIMALS ± 0.13	QUALITY		
ANGLES ± 0.5	ISSUED		
FRACTIONS ±	DRAWING FILE:	10101533PVI	
FINISH	SOLID MODEL:	10101533PVI	
CRITICAL TO QUALITY CHARACTERISTIC			

GE Energy

TITLE: OUTLINE FIX IEC F3 3P ENTELLIGUARD G

SIZE: A3 DRAWING: 10101533 REV: 4

SCALE: 1:10 SHEET 1 of 1

METRIC