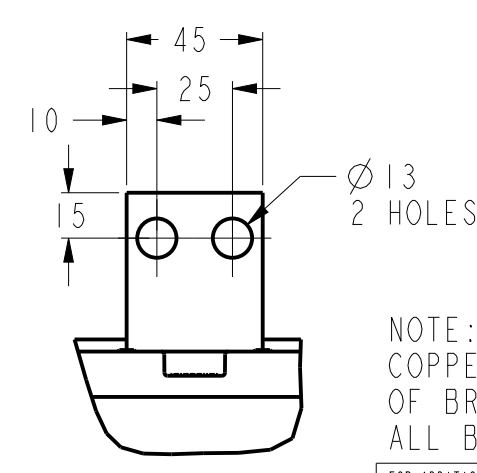
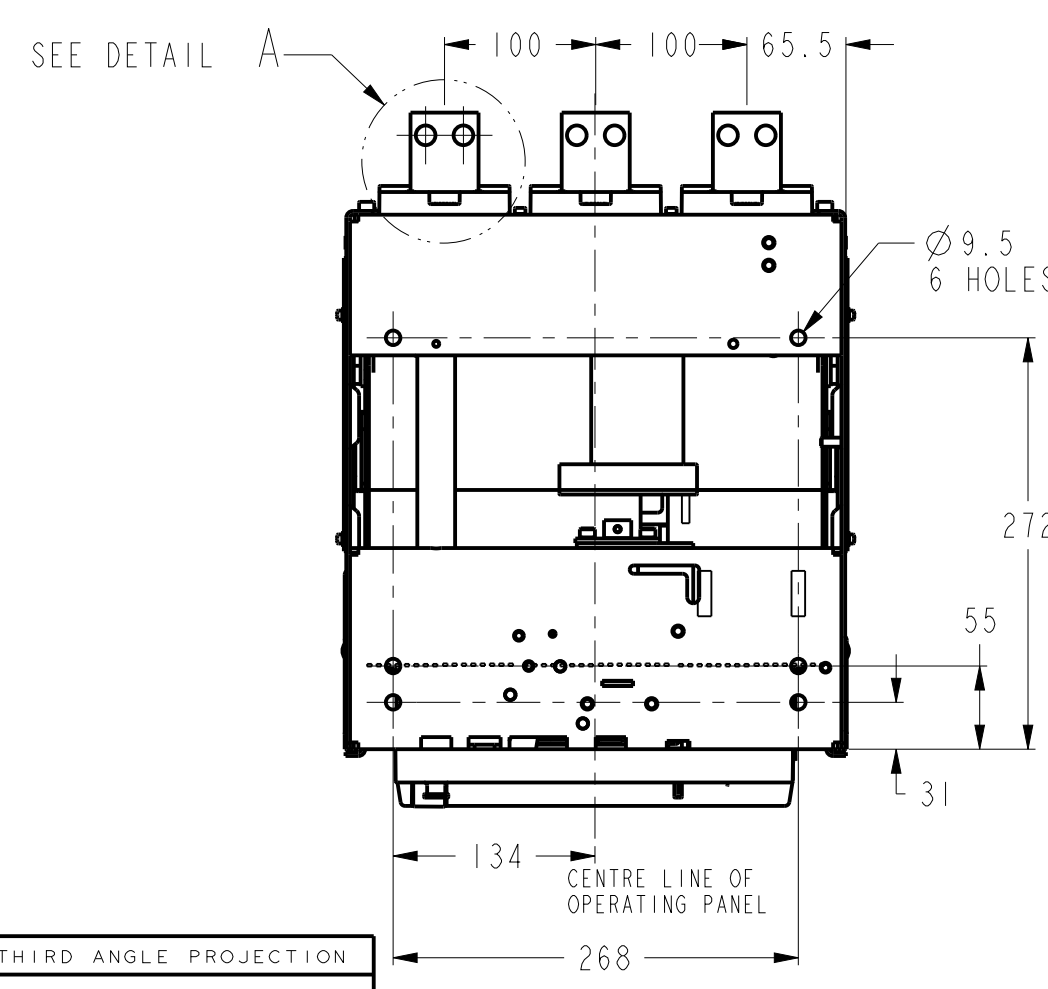
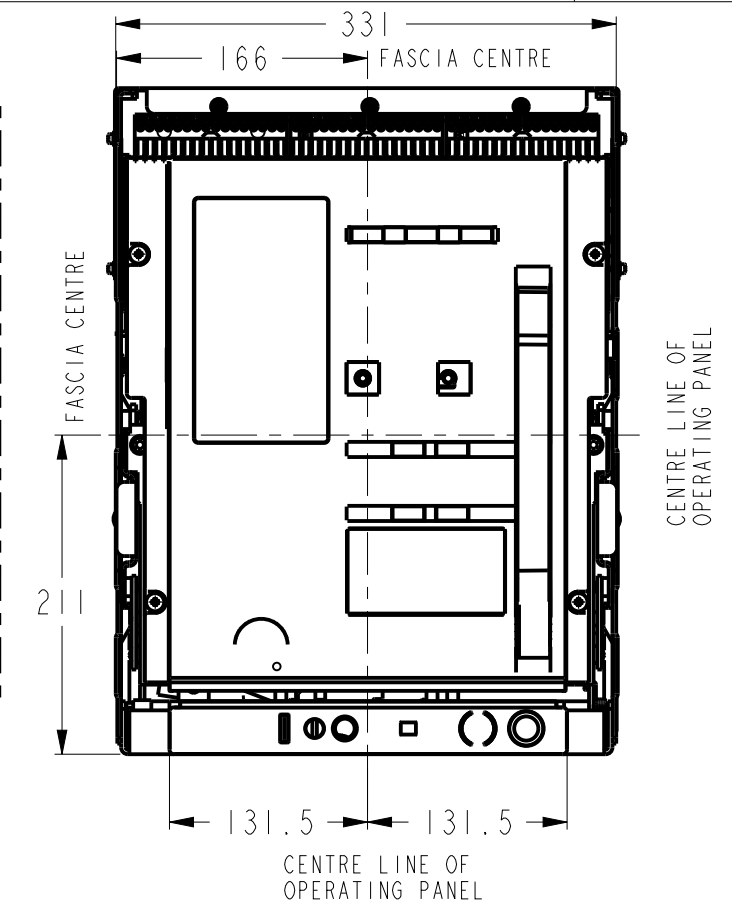
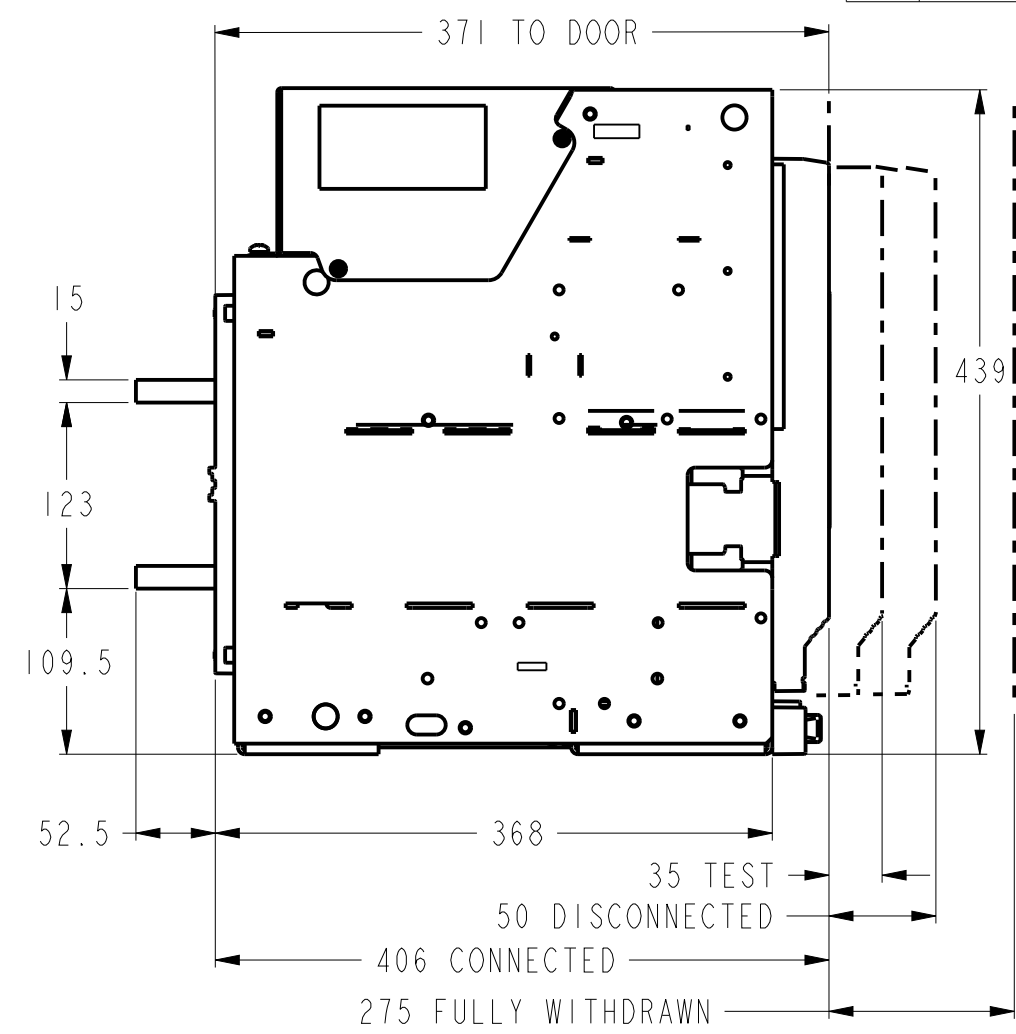
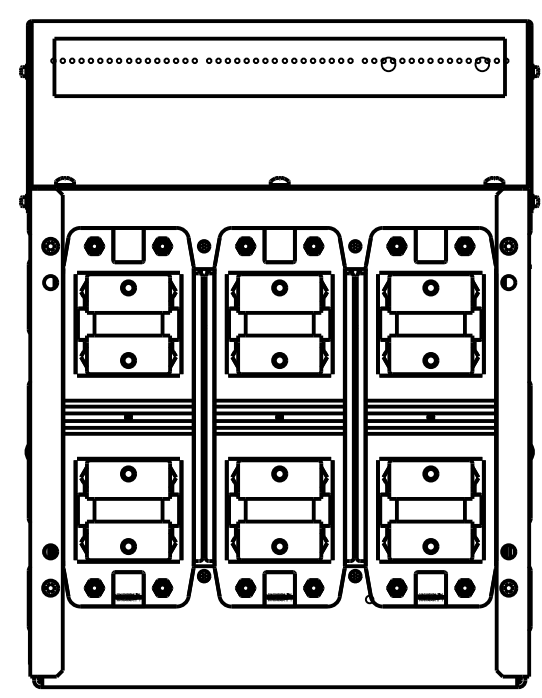


GE PROPRIETARY AND CONFIDENTIAL INFORMATION  
 This document is the property of General Electric Company ("GE") and contains proprietary information of GE. This document is loaned on the express condition that neither it nor the information contained therein shall be disclosed to others without the express written consent of GE Energy, and that the information shall be used by the recipient only as approved expressly by GE Energy. This document shall be returned to GE upon its request. This document may be subject to certain restrictions under U.S. export control laws and regulations.

REVISIONS			
REV.	DESCRIPTION	DATE	APPROVED
2	C003310	03-06-15	VS
3	C035056	VINU 10-24-17	SANDEEP
4	C046810	RAGHAV 06-07-18	GUPTA

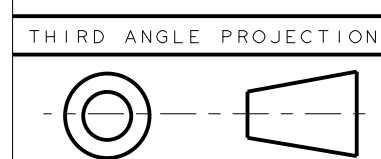
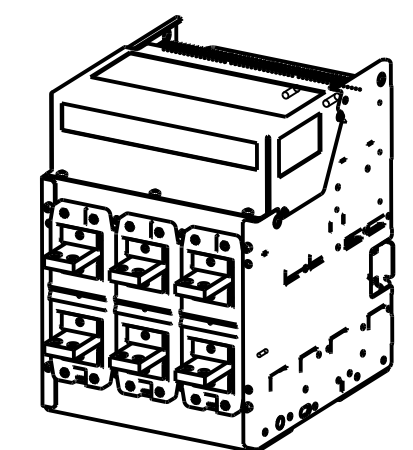
METRIC



DETAIL A  
SCALE 2:5

NOTE:  
 COPPER WORK MUST BE SUPPORTED WITHIN 200mm OF BREAKER CONNECTIONS - BUS BAR OR CABLES  
 ALL BUS BAR CONNECTIONS TO BE TIGHTENED TO 50Nm TORQUE

PV1



Article or Material Must Conform to REACH Procedure SI900000 Sec. 14  
 Article or Material Must Conform to RoHS Procedure SI900000 Sec. 13  
 Part must conform to SI 900000 Sect. 4, Toxicity Procedure

FOR ADDITIONAL INFO REFER TO:	SIGNATURES		DATE
APPLIED PRACTICES	MODEL		YY 11-20-12
DIMENSIONS ARE IN MILLIMETERS	DETAIL		YY 11-20-12
<b>UNLESS OTHERWISE SPECIFIED IN DRAWING</b>	CHECKED	GUPTA	11-20-12
TOLERANCE ON:	ENGRG		.
1 PL DECIMALS ± 0.3	MFG		.
2 PL DECIMALS ± 0.13	QUALITY		.
ANGLES ± 0.5	ISSUED		.
FRACTIONS ±	DRAWING FILE:	10110987PVI	
FINISH	SOLID MODEL:	10110987PVI	
CRITICAL TO QUALITY CHARACTERISTIC			

**GE Energy**

TITLE: **ENTELLIGUARD L - TYPE S**  
**400A - 1600A - DIRECT HORIZONTAL**  
**3 POLE, DRAWOUT**

SIZE: A3  
 DRAWING: 10110987  
 REV: 4

SCALE: 1:10  
 REF. No: .

SHEET 1 of 2

METRIC

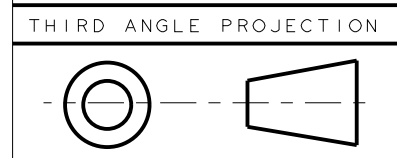
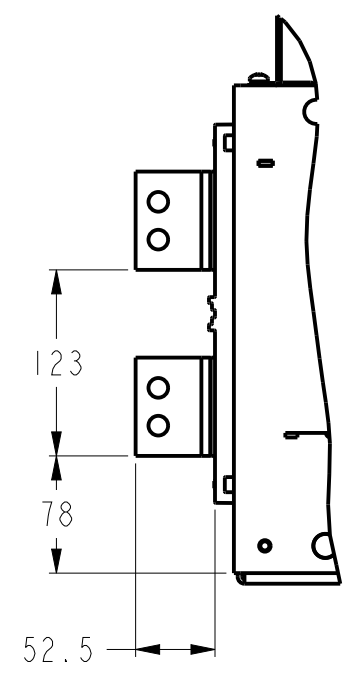
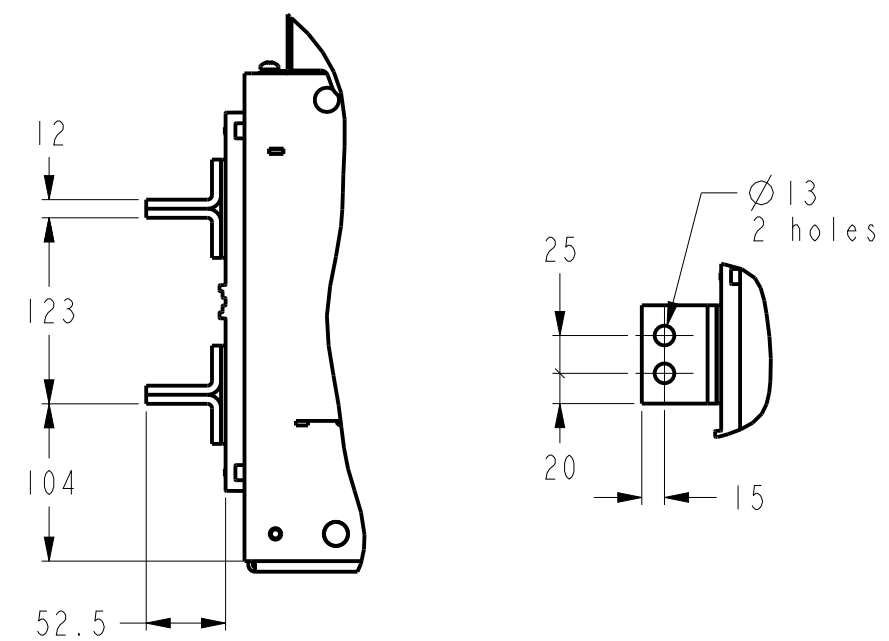
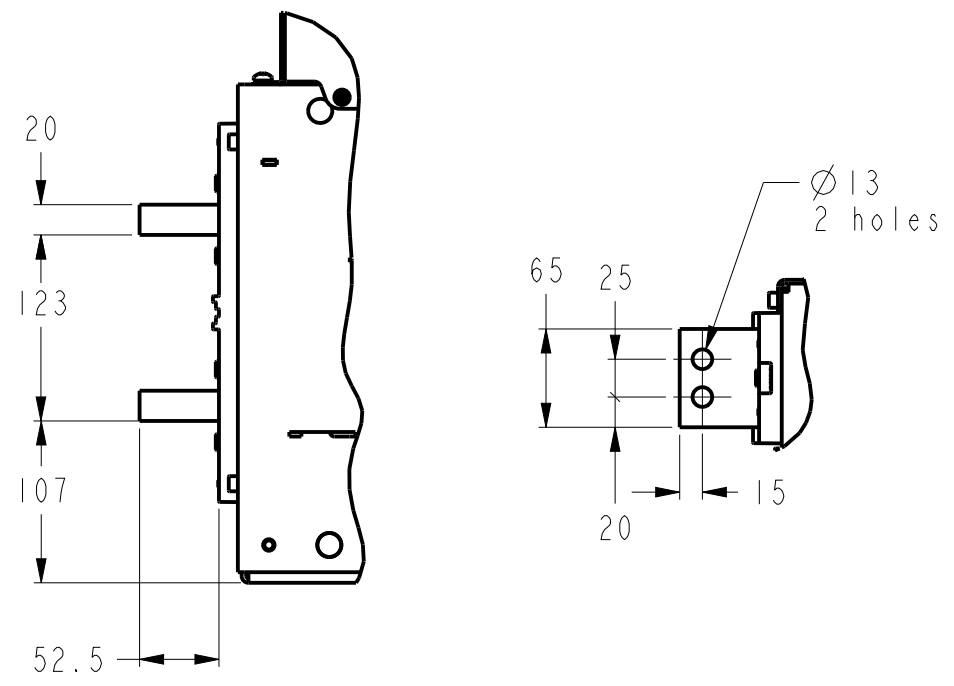
SHEET 2  
 REV 4  
 10110987  
 SIZE A3  
 DRAWING NO.

GE PROPRIETARY AND CONFIDENTIAL INFORMATION  
 This document is the property of General Electric Company ("GE") and contains proprietary information of GE. This document is loaned on the express condition that neither it nor the information contained therein shall be disclosed to others without the express written consent of GE Energy, and that the information shall be used by the recipient only as approved expressly by GE Energy. This document shall be returned to GE upon its request. This document may be subject to certain restrictions under U.S. export control laws and regulations.

REVISIONS			
REV.	DESCRIPTION	DATE	APPROVED
2	C003310	03-06-15	VS
3	C035056	VINU 10-24-17	SANDEEP
4	C046810	RAGHAV 06-07-18	GUPTA

N & R TYPES 400-2000A  
 S TYPES 2000A

UNIVERSAL CONNECTION PADS  
 MOUNTED HORIZONTALLY OR VERTICALLY  
 S TYPES 1600A



Article or Material Must Conform to REACH Procedure SI900000 Sec. 14  
 Article or Material Must Conform to RoHS Procedure SI900000 Sec. 13

Part must conform to SI 900000 Sect. 4, Toxicity Procedure

FOR ADDITIONAL INFO REFER TO:	SIGNATURES		DATE
APPLIED PRACTICES	MODEL		YY 11-20-12
DIMENSIONS ARE IN MILLIMETERS	DETAIL		YY 11-20-12
<b>UNLESS OTHERWISE SPECIFIED IN DRAWING</b>	CHECKED	GUPTA	11-20-12
TOLERANCE ON:	ENGRG		. .
1 PL DECIMALS ± 0.3	MFG		. .
2 PL DECIMALS ± 0.13	QUALITY		. .
ANGLES ± 0.5	ISSUED		. .
FRACTIONS ±	DRAWING FILE:	10110987PVI	
FINISH	SOLID MODEL:	10110987PVI	
CRITICAL TO QUALITY CHARACTERISTIC			

**GE Energy**  
**ENTELIGUARD L - TYPE S**  
**400A - 1600A - DIRECT HORIZONTAL**  
**3 POLE, DRAWOUT**

SIZE	DRAWING	REV
A3	10110987	4
SCALE: 1:10	REF. No:	SHEET 2 of 2

METRIC