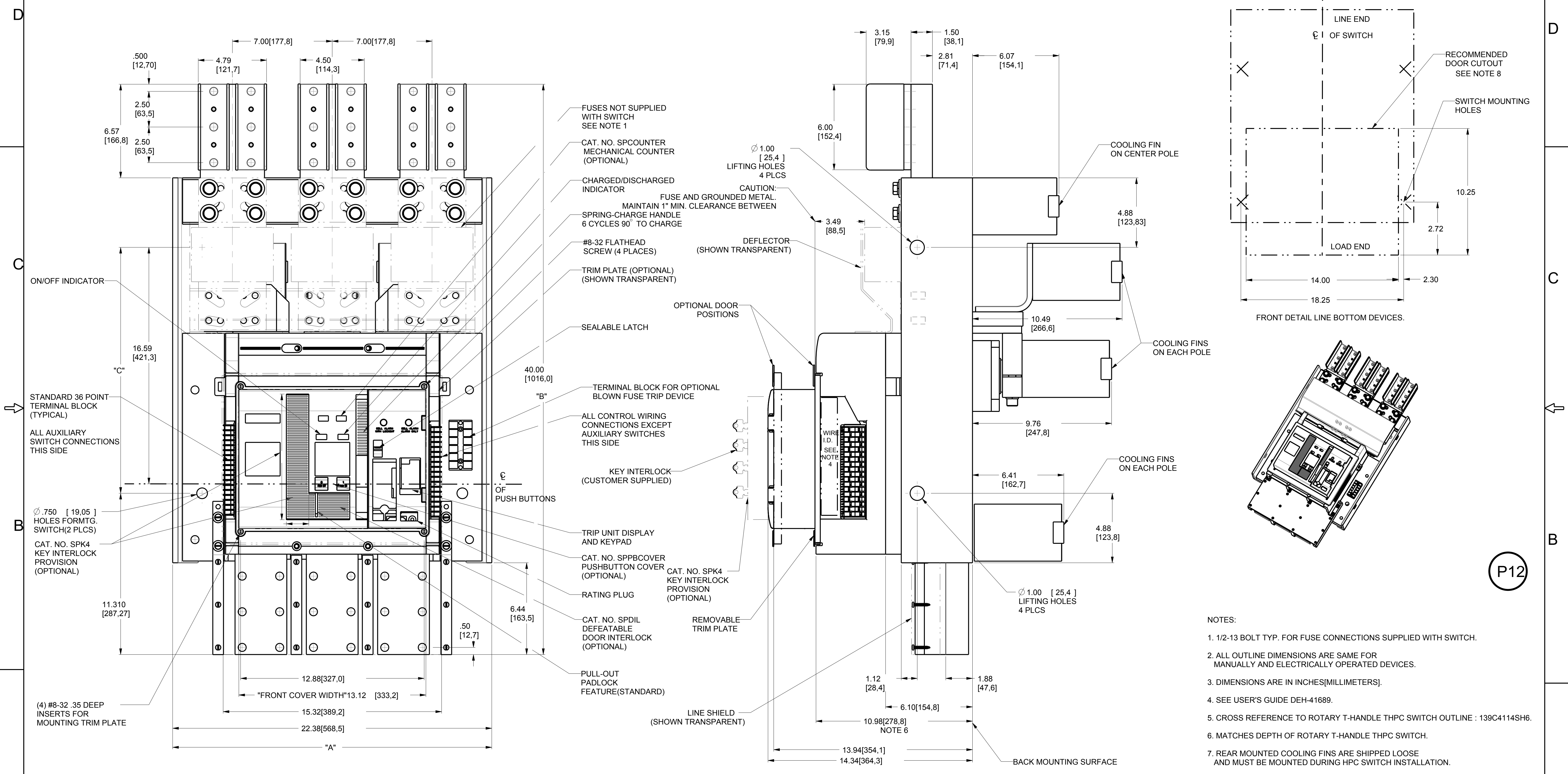


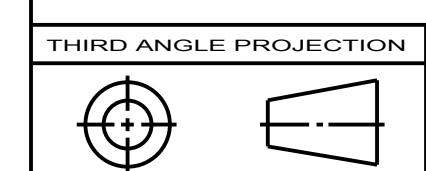
GE PROPRIETARY AND CONFIDENTIAL INFORMATION
 This document is the property of General Electric Company ("GE") and contains proprietary information of GE. This document is loaned on the express condition that neither it nor the information contained therein shall be disclosed to others without the express written consent of GE Industrial Solutions, and that the information shall be used by the recipient only as approved expressly by GE Industrial Solutions. This document shall be returned to GE upon its request. This document may be subject to certain restrictions under U.S. export control laws and regulations.

REVISIONS				
REV.	DESCRIPTION	DATE	APPROVED	
1	R1333640	VASANTH	01/31/14	
2	R1407486	VASANTH	03/27/14	

SWITCH	A	B	C
THPC23640T	22.38	40	17.25
THPL23640T	25.38	42	19.25



- NOTES:
- 1/2-13 BOLT TYP. FOR FUSE CONNECTIONS SUPPLIED WITH SWITCH.
 - ALL OUTLINE DIMENSIONS ARE SAME FOR MANUALLY AND ELECTRICALLY OPERATED DEVICES.
 - DIMENSIONS ARE IN INCHES[MILLIMETERS].
 - SEE USER'S GUIDE DEH-41689.
 - CROSS REFERENCE TO ROTARY T-HANDLE THPC SWITCH OUTLINE : 139C4114SH6.
 - MATCHES DEPTH OF ROTARY T-HANDLE THPC SWITCH.
 - REAR MOUNTED COOLING FIN'S ARE SHIPPED LOOSE AND MUST BE MOUNTED DURING HPC SWITCH INSTALLATION.
 - CUT-OUT BASED ON USE OF TRIM PLATE.



Article or Material Must Conform to REACH Procedure SI900000 Sec. 14
 Article or Material Must Conform to RoHS Procedure SI900000 Sec. 13
 Part must conform to SI 900000 Sect. 4, Toxicity Procedure

APPLIED PRACTICES	SIGNATURES	DATE
MODEL	VASANTH	10/22/13
DETAIL	VASANTH	10/22/13
CHECKED	BILL	10/22/13
ENGRG		
MFG		
QUALITY		
ISSUED		

UNLESS OTHERWISE SPECIFIED IN DRAWING
 TOLERANCE ON:
 1 PL DECIMALS ± 0.0
 2 PL DECIMALS ± 0.02
 3 PL DECIMALS ± 0.005
 ANGLES ± 1.0
 FRACTIONS ± FINISH
 CRITICAL TO QUALITY CHARACTERISTIC

GE Industrial Solutions

TITLE: **OUTLINE-4000A, BOTTOM FEED HPC, THPC23640B, THPL23640B**

SIZE: D DRAWING 10112083 REV 2

SCALE: 1:5 REF. No. SHEET 1 OF 1