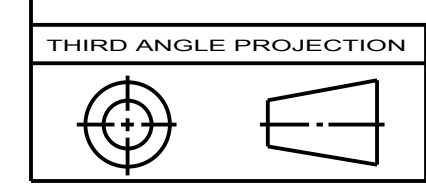
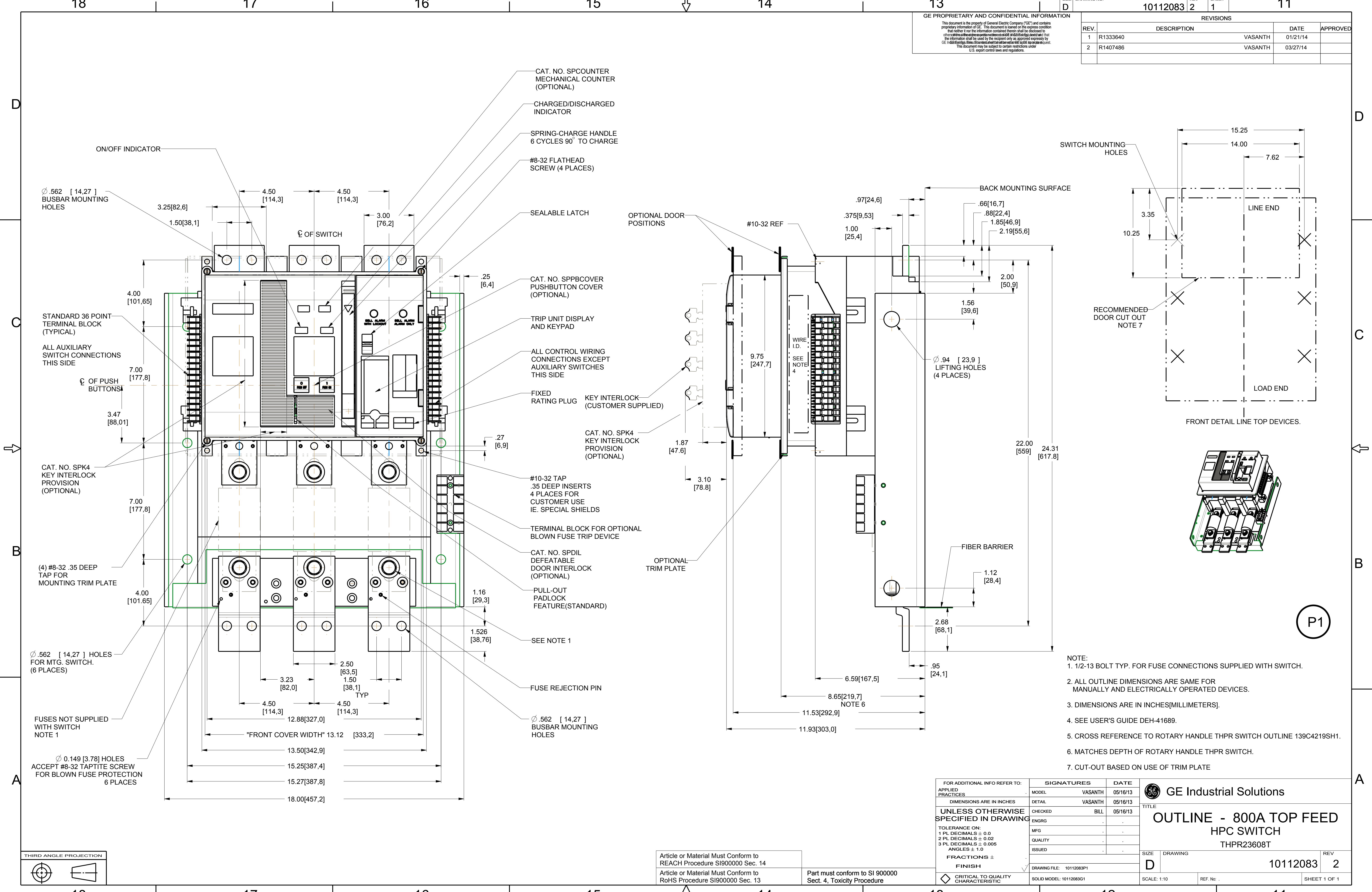


GE PROPRIETARY AND CONFIDENTIAL INFORMATION
 This document is the property of General Electric Company ("GE") and contains proprietary information of GE. This document is loaned on the express condition that neither it nor the information contained therein shall be disclosed to any other person without the prior written consent of GE. It is acknowledged that the information shall be used by the recipient only as approved expressly by GE. In the event of any change in ownership or control of GE, the recipient shall be notified in writing. This document may be subject to certain restrictions under U.S. export control laws and regulations.

REVISIONS		DATE	APPROVED
REV. 1	R1333640	VASANTH	01/21/14
REV. 2	R1407486	VASANTH	03/27/14



Article or Material Must Conform to REACH Procedure SI900000 Sec. 14
 Article or Material Must Conform to RoHS Procedure SI900000 Sec. 13
 Part must conform to SI 900000 Sect. 4, Toxicity Procedure

FOR ADDITIONAL INFO REFER TO:		SIGNATURES	DATE
APPLIED PRACTICES	MODEL	VASANTH	05/16/13
DIMENSIONS ARE IN INCHES	DETAIL	VASANTH	05/16/13
UNLESS OTHERWISE SPECIFIED IN DRAWING	CHECKED	BILL	05/16/13
TOLERANCE ON:	ENGRG		
1 PL DECIMALS ± 0.0	MFG		
2 PL DECIMALS ± 0.02	QUALITY		
3 PL DECIMALS ± 0.005	ISSUED		
ANGLES ± 1.0			
FRACTIONS ± FINISH			
CRITICAL TO QUALITY CHARACTERISTIC	DRAWING FILE:	10112083P1	
	SOLID MODEL:	10112083G1	

GE Industrial Solutions

TITLE: **OUTLINE - 800A TOP FEED HPC SWITCH**
 THPR23608T

SIZE: DRAWING **D** 10112083 REV **2**
 SCALE: 1:10 REF. No. SHEET 1 OF 1

P1