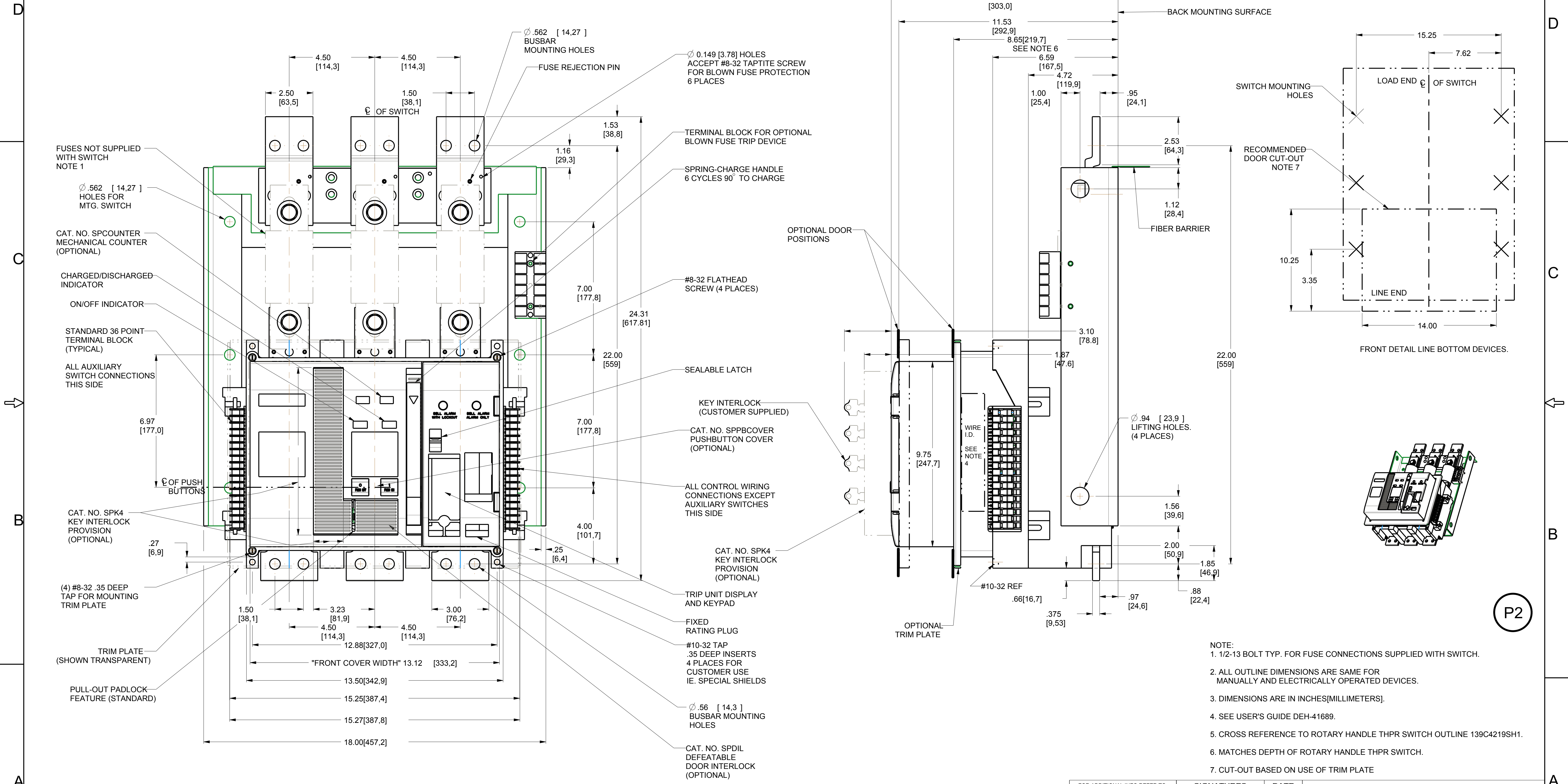
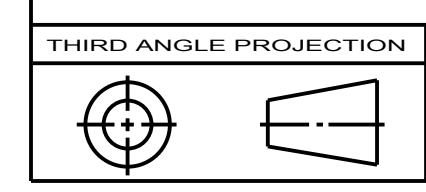


GE PROPRIETARY AND CONFIDENTIAL INFORMATION
 This document is the property of General Electric Company ("GE") and contains proprietary information of GE. This document is loaned on the express condition that neither it nor the information contained therein shall be disclosed to any other person without the prior written consent of GE. It is acknowledged that the information shall be used by the recipient only as approved expressly by GE. This document may be subject to certain restrictions under U.S. export control laws and regulations.

REVOLUTIONS		DATE	APPROVED
1	R1333640	VASANTH	01/21/14
2	R1407486	VASANTH	03/27/14



- NOTE:
 1. 1/2-13 BOLT TYP. FOR FUSE CONNECTIONS SUPPLIED WITH SWITCH.
 2. ALL OUTLINE DIMENSIONS ARE SAME FOR MANUALLY AND ELECTRICALLY OPERATED DEVICES.
 3. DIMENSIONS ARE IN INCHES[MILLIMETERS].
 4. SEE USER'S GUIDE DEH-41689.
 5. CROSS REFERENCE TO ROTARY HANDLE THPR SWITCH OUTLINE 139C4219SH1.
 6. MATCHES DEPTH OF ROTARY HANDLE THPR SWITCH.
 7. CUT-OUT BASED ON USE OF TRIM PLATE



Article or Material Must Conform to REACH Procedure SI900000 Sec. 14
 Article or Material Must Conform to RoHS Procedure SI900000 Sec. 13
 Part must conform to SI 900000 Sect. 4, Toxicity Procedure

APPLIED PRACTICES	SIGNATURES	DATE
DIMENSIONS ARE IN INCHES	MODEL VASANTH	05/16/13
UNLESS OTHERWISE SPECIFIED IN DRAWING	DETAIL VASANTH	05/16/13
TOLERANCE ON:	CHECKED SWAMY	05/16/13
1 PL DECIMALS ± 0.0	ENGRG	
2 PL DECIMALS ± 0.02	MFG	
3 PL DECIMALS ± 0.005	QUALITY	
ANGLES ± 1.0	ISSUED	
FRACTIONS ± FINISH		
CRITICAL TO QUALITY CHARACTERISTIC	DRAWING FILE: 10112083P2	
	SOLID MODEL: 10112083G2	

GE Industrial Solutions

TITLE: **OUTLINE, 800A BOTTOM FEED HPC SWITCH**
 THPR23608B

SIZE: DRAWING **D** 10112083 2
 SCALE: 1:10 REV: SHEET 1 OF 1

P2