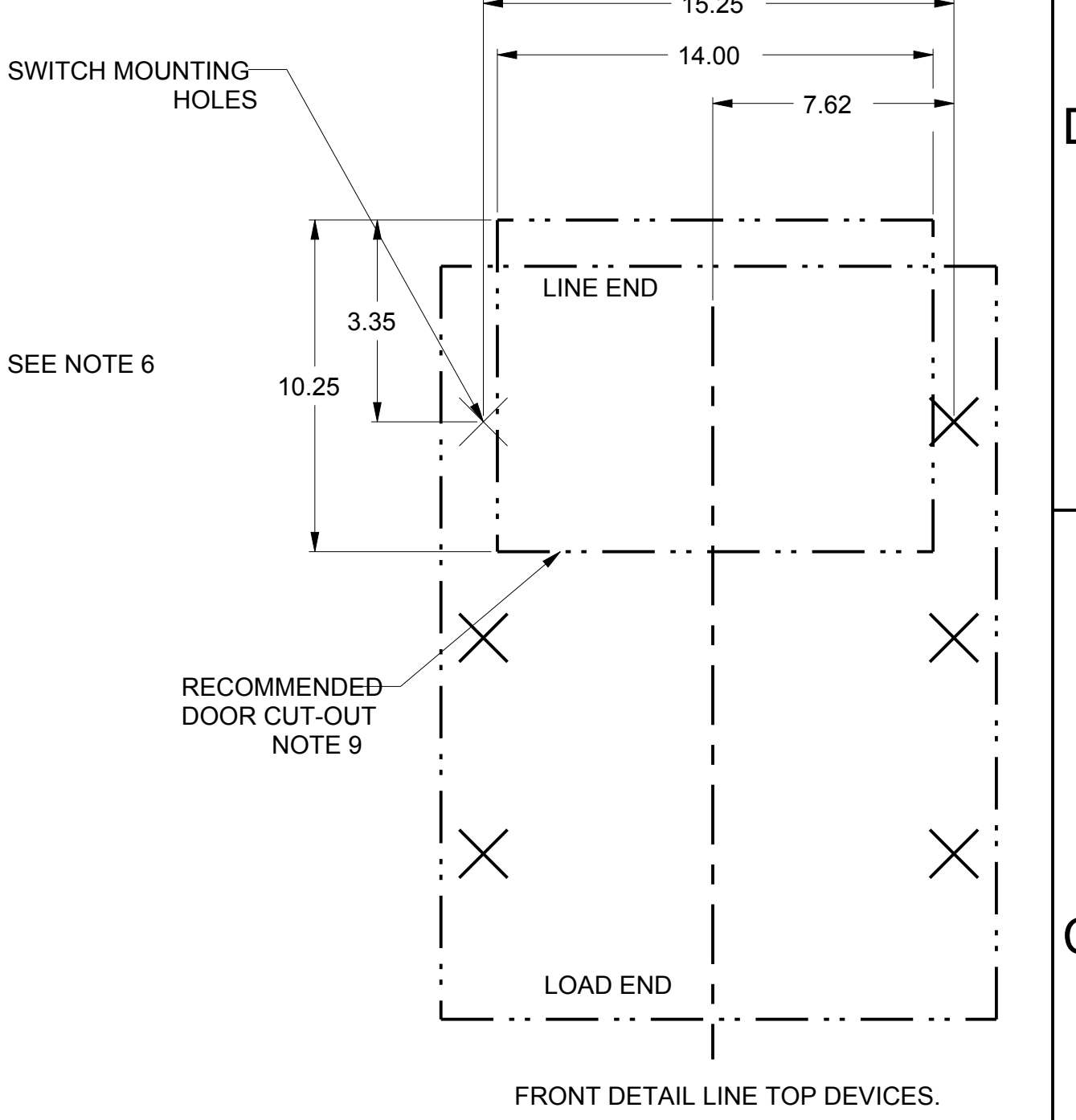
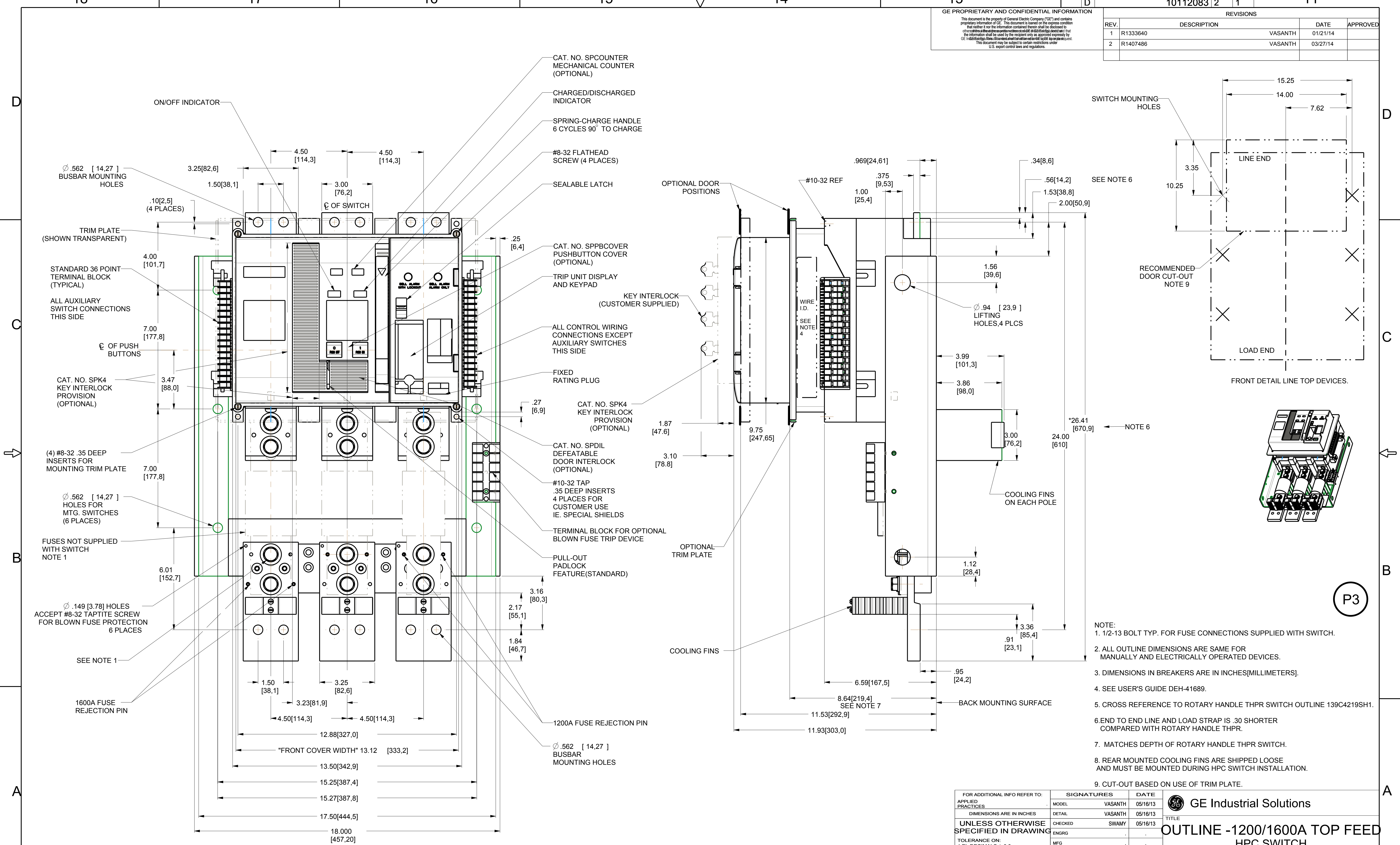


GE PROPRIETARY AND CONFIDENTIAL INFORMATION  
 This document is the property of General Electric Company ("GE") and contains proprietary information of GE. This document is loaned on the express condition that neither it nor the information contained therein shall be disclosed to any other person without the prior written consent of GE. It is acknowledged that the information shall be used by the recipient only as approved expressly by GE. In the event of any change in ownership or control of the recipient, the recipient shall notify GE immediately. This document may be subject to certain restrictions under U.S. export control laws and regulations.

DRAWING NO.		REV		SHEET	
10112083 2		1		11	
REV.	DESCRIPTION	DATE	APPROVED		
1	R1333640	VASANTH	01/21/14		
2	R1407486	VASANTH	03/27/14		



- NOTE:
- 1/2-13 BOLT TYP. FOR FUSE CONNECTIONS SUPPLIED WITH SWITCH.
  - ALL OUTLINE DIMENSIONS ARE SAME FOR MANUALLY AND ELECTRICALLY OPERATED DEVICES.
  - DIMENSIONS IN BREAKERS ARE IN INCHES [MILLIMETERS].
  - SEE USER'S GUIDE DEH-41689.
  - CROSS REFERENCE TO ROTARY HANDLE THPR SWITCH OUTLINE 139C4219SH1.
  - END TO END LINE AND LOAD STRAP IS .30 SHORTER COMPARED WITH ROTARY HANDLE THPR.
  - MATCHES DEPTH OF ROTARY HANDLE THPR SWITCH.
  - REAR MOUNTED COOLING FINS ARE SHIPPED LOOSE AND MUST BE MOUNTED DURING HPC SWITCH INSTALLATION.
  - CUT-OUT BASED ON USE OF TRIM PLATE.

FOR ADDITIONAL INFO REFER TO:		SIGNATURES		DATE	
APPLIED PRACTICES	MODEL	VASANTH	05/16/13		
DIMENSIONS ARE IN INCHES	DETAIL	VASANTH	05/16/13		
UNLESS OTHERWISE SPECIFIED IN DRAWING	CHECKED	SWAMY	05/16/13		
TOLERANCE ON:	ENGRG				
1 PL DECIMALS ± 0.0	MFG				
2 PL DECIMALS ± 0.02	QUALITY				
3 PL DECIMALS ± 0.005	ISSUED				
ANGLES ± 1.0					
FRACTIONS ±					
FINISH					
CRITICAL TO QUALITY CHARACTERISTIC					

GE Industrial Solutions		TITLE	
OUTLINE -1200/1600A TOP FEED HPC SWITCH		THPR23612T, THPR23616T	
SIZE	DRAWING	10112083	REV 2
D			
SCALE: 1:10	REF. No.		SHEET 1 OF 1

Article or Material Must Conform to REACH Procedure SI900000 Sec. 14  
 Article or Material Must Conform to RoHS Procedure SI900000 Sec. 13  
 Part must conform to SI 900000 Sect. 4, Toxicity Procedure

