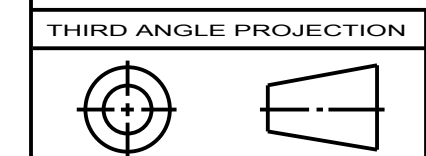
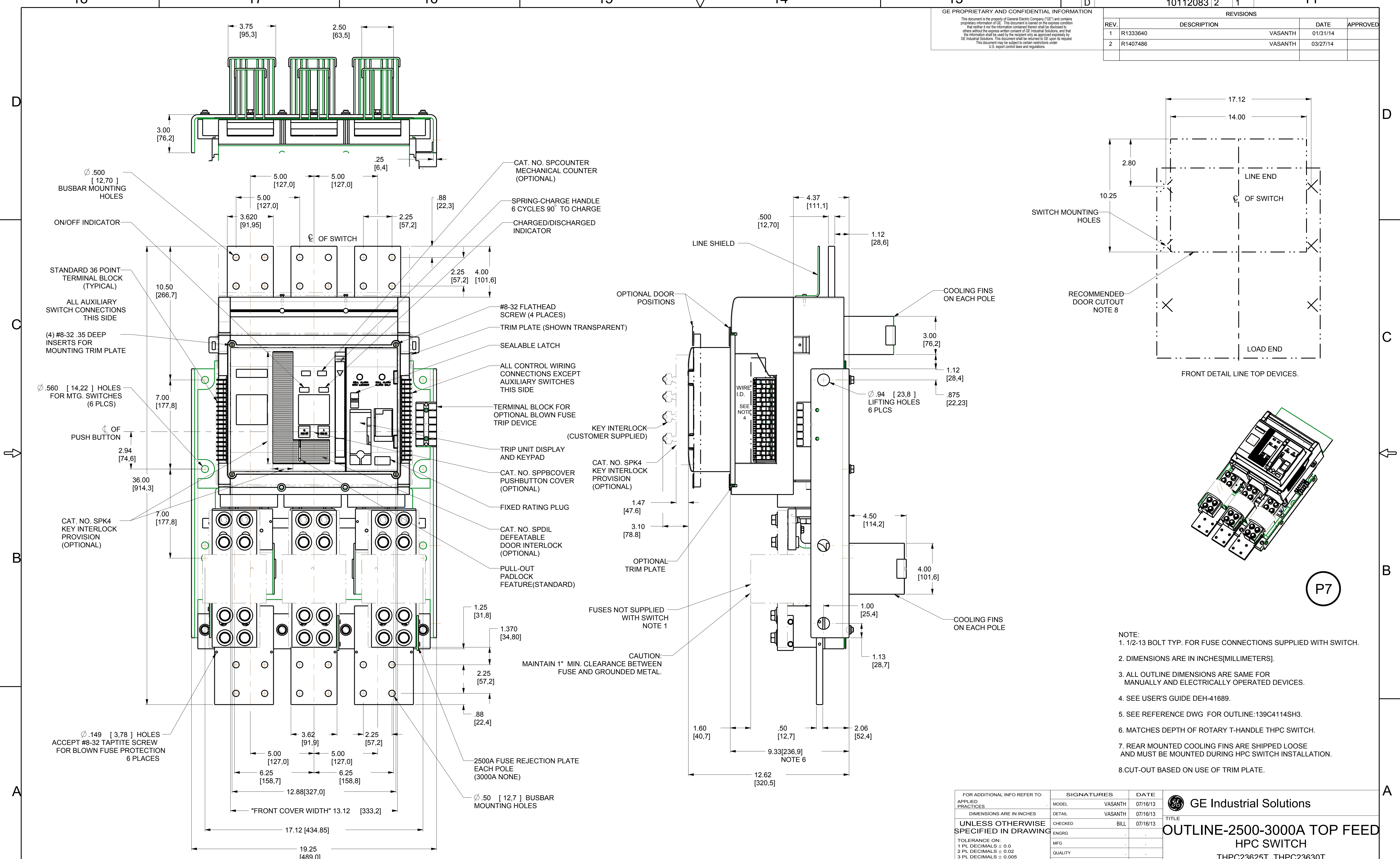


GE PROPRIETARY AND CONFIDENTIAL INFORMATION
 This document is the property of General Electric Company ("GE") and contains proprietary information of GE. This document is loaned on the express condition that neither it nor the information contained therein shall be disclosed to others without the express written consent of GE Industrial Solutions, and that the information shall be used by the recipient only as approved expressly by GE Industrial Solutions. This document shall be returned to GE upon its request. This document may be subject to certain restrictions under U.S. export control laws and regulations.

SIZE	DRAWING NO.	REV	SHEET
D	10112083	2	1
REVISIONS			
REV.	DESCRIPTION	DATE	APPROVED
1	R1333640	VASANTH	01/31/14
2	R1407486	VASANTH	03/27/14



Article or Material Must Conform to REACH Procedure SI900000 Sec. 14
 Article or Material Must Conform to RoHS Procedure SI900000 Sec. 13

Part must conform to SI 900000 Sect. 4, Toxicity Procedure

FOR ADDITIONAL INFO REFER TO:	SIGNATURES	DATE
APPLIED PRACTICES	MODEL VASANTH	07/16/13
DIMENSIONS ARE IN INCHES	DETAIL VASANTH	07/16/13
UNLESS OTHERWISE SPECIFIED IN DRAWING	CHECKED BILL	07/16/13
TOLERANCE ON:	ENGRG	.
1 PL DECIMALS ± 0.0	MFG	.
2 PL DECIMALS ± 0.02	QUALITY	.
3 PL DECIMALS ± 0.005	ISSUED	.
ANGLES ± 1.0		
FRACTIONS ± FINISH		
CRITICAL TO QUALITY CHARACTERISTIC	DRAWING FILE: 10112083P7	
	SOLID MODEL: 10112083TG7	

GE Industrial Solutions		
TITLE OUTLINE-2500-3000A TOP FEED HPC SWITCH THPC23625T, THPC23630T		
SIZE	DRAWING	REV
D	10112083	2
SCALE: 1:5	REF No: 139C4114SH3	SHEET 1 OF 1