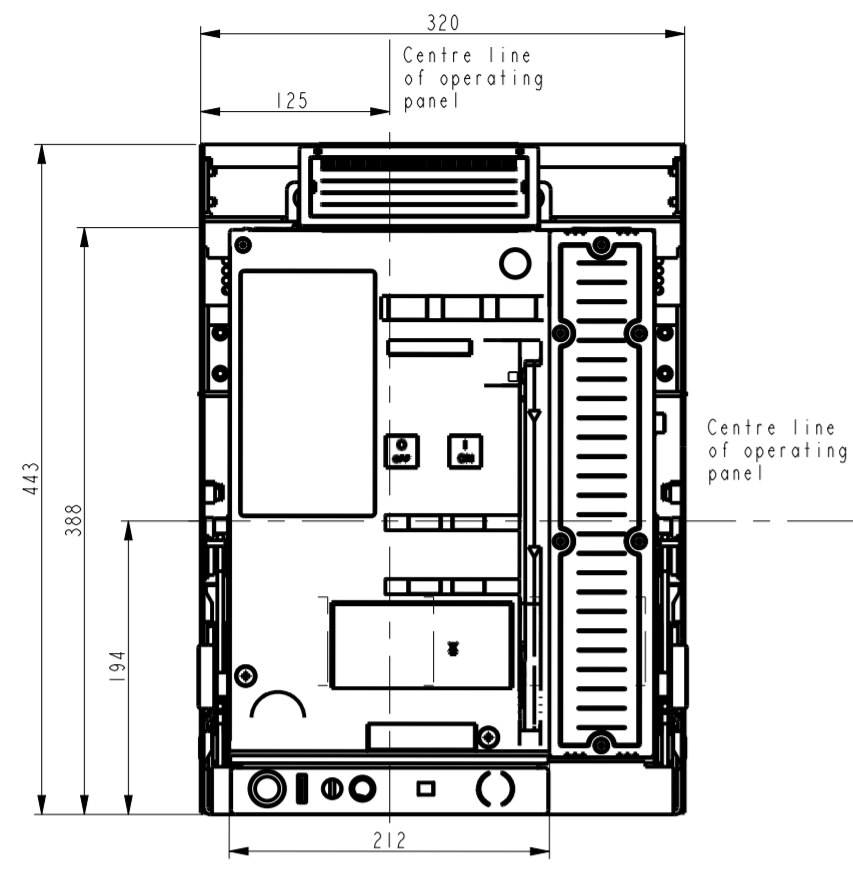
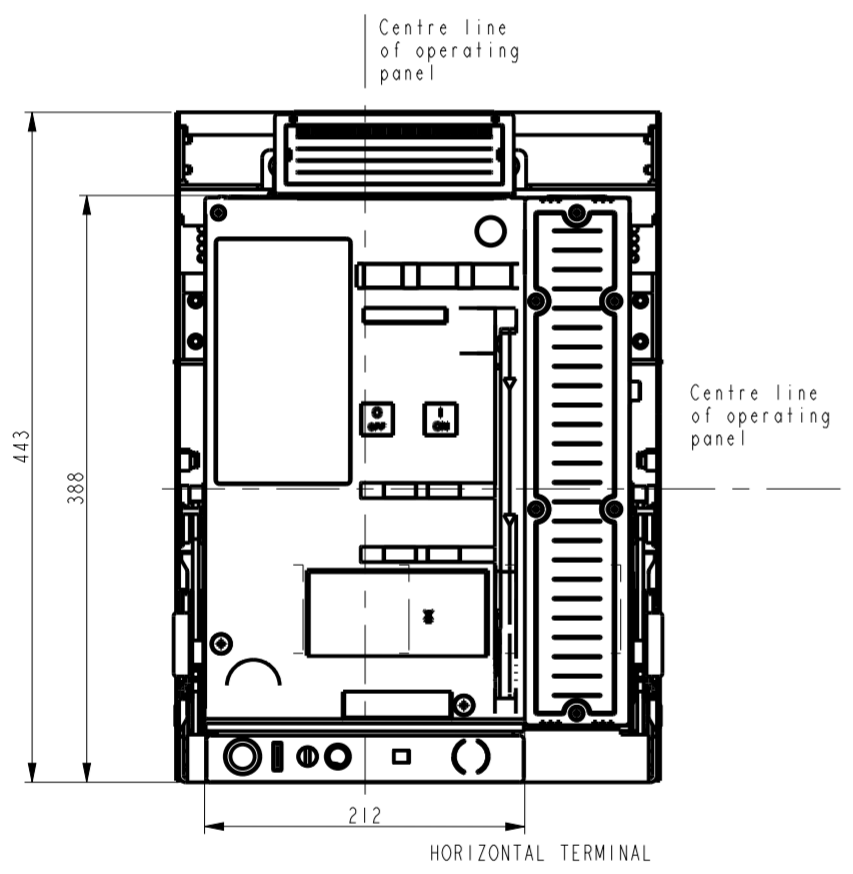
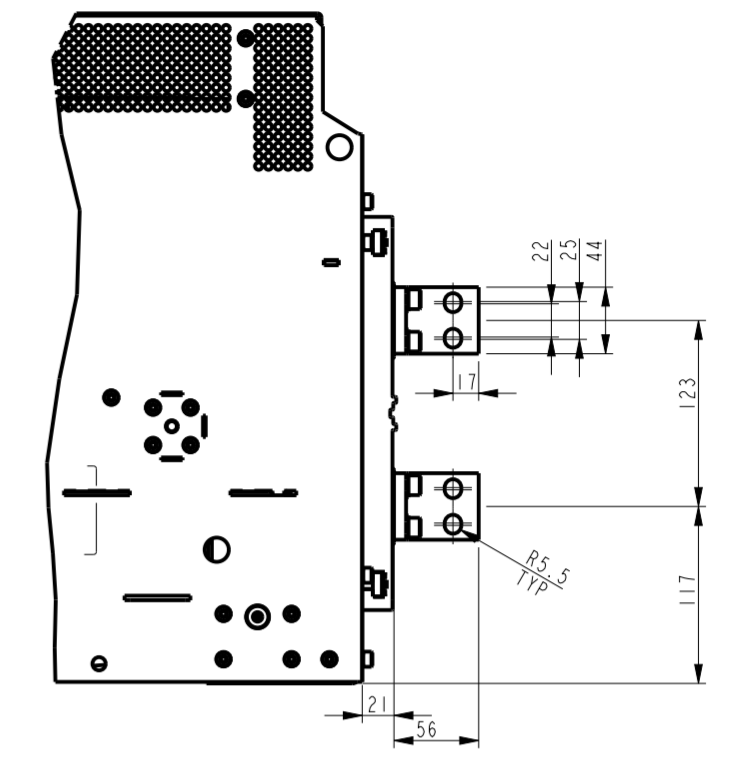
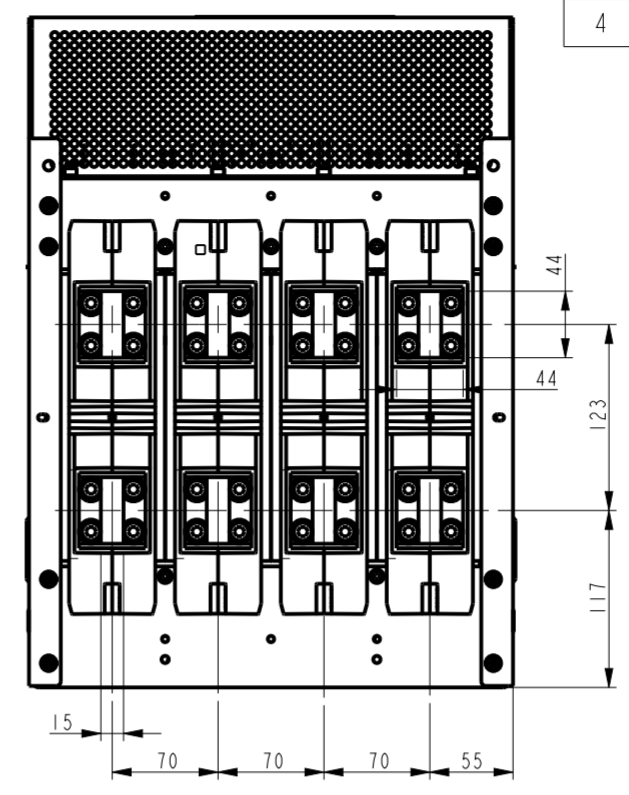
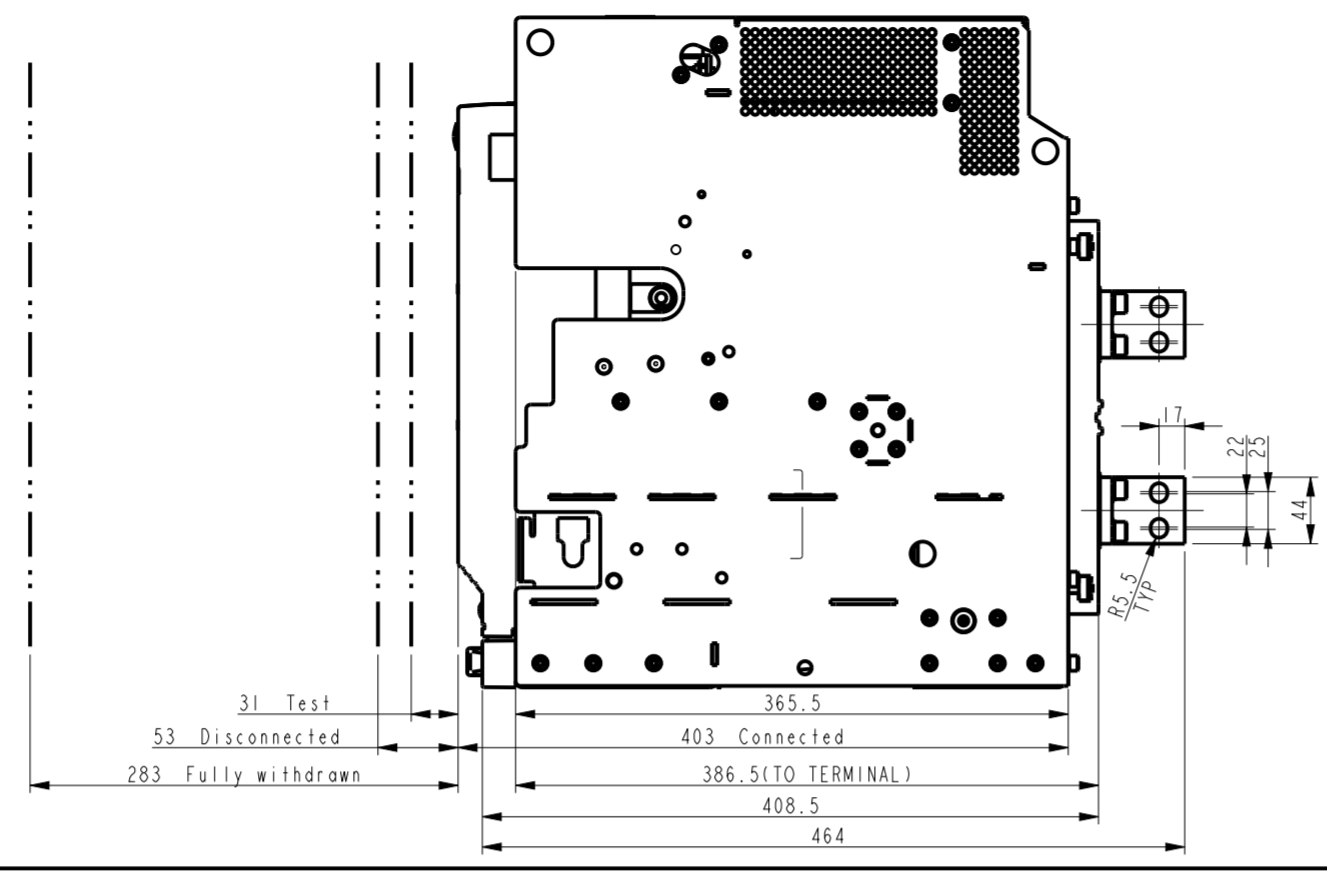


**GE PROPRIETARY AND CONFIDENTIAL INFORMATION**  
 This document is the property of General Electric Company ("GE") and contains proprietary information of GE. This document is loaned on the express condition that neither it nor the information contained therein shall be disclosed to others without the express written consent of GE Energy, and that the information shall be used by the recipient only as approved expressly by GE Energy. This document shall be returned to GE upon its request. This document may be subject to certain restrictions under U.S. export control laws and regulations.

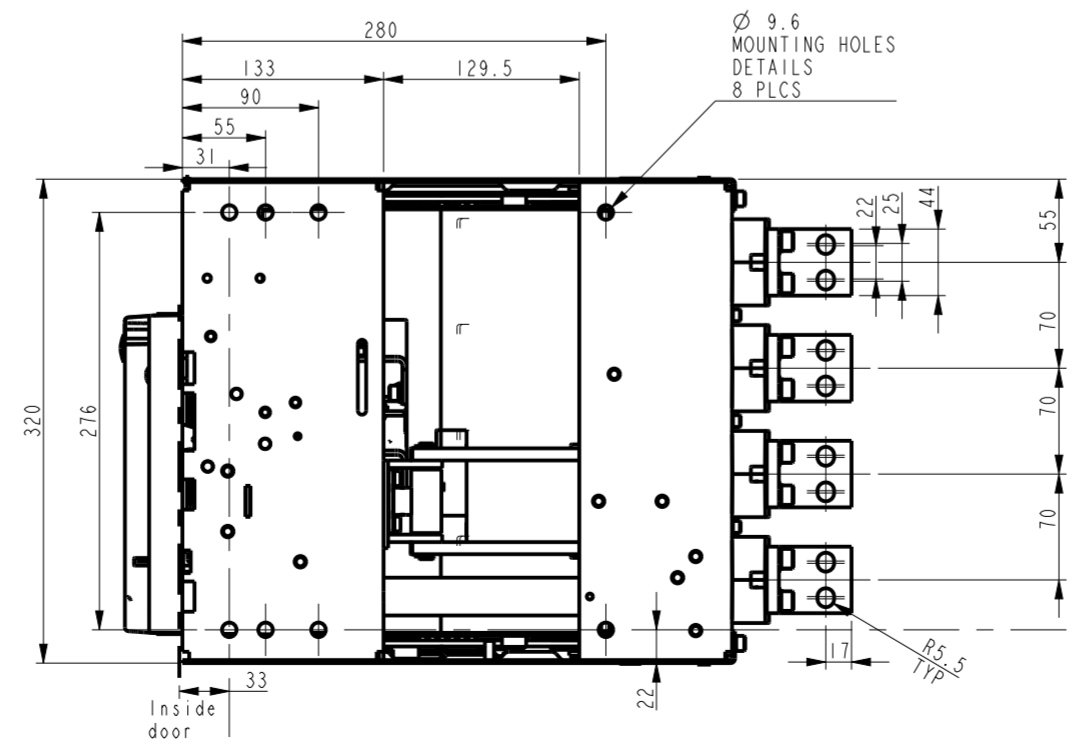
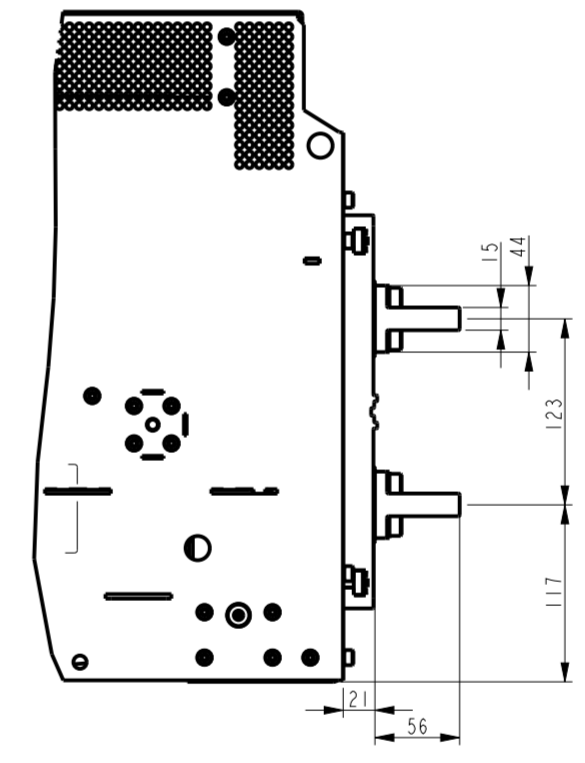
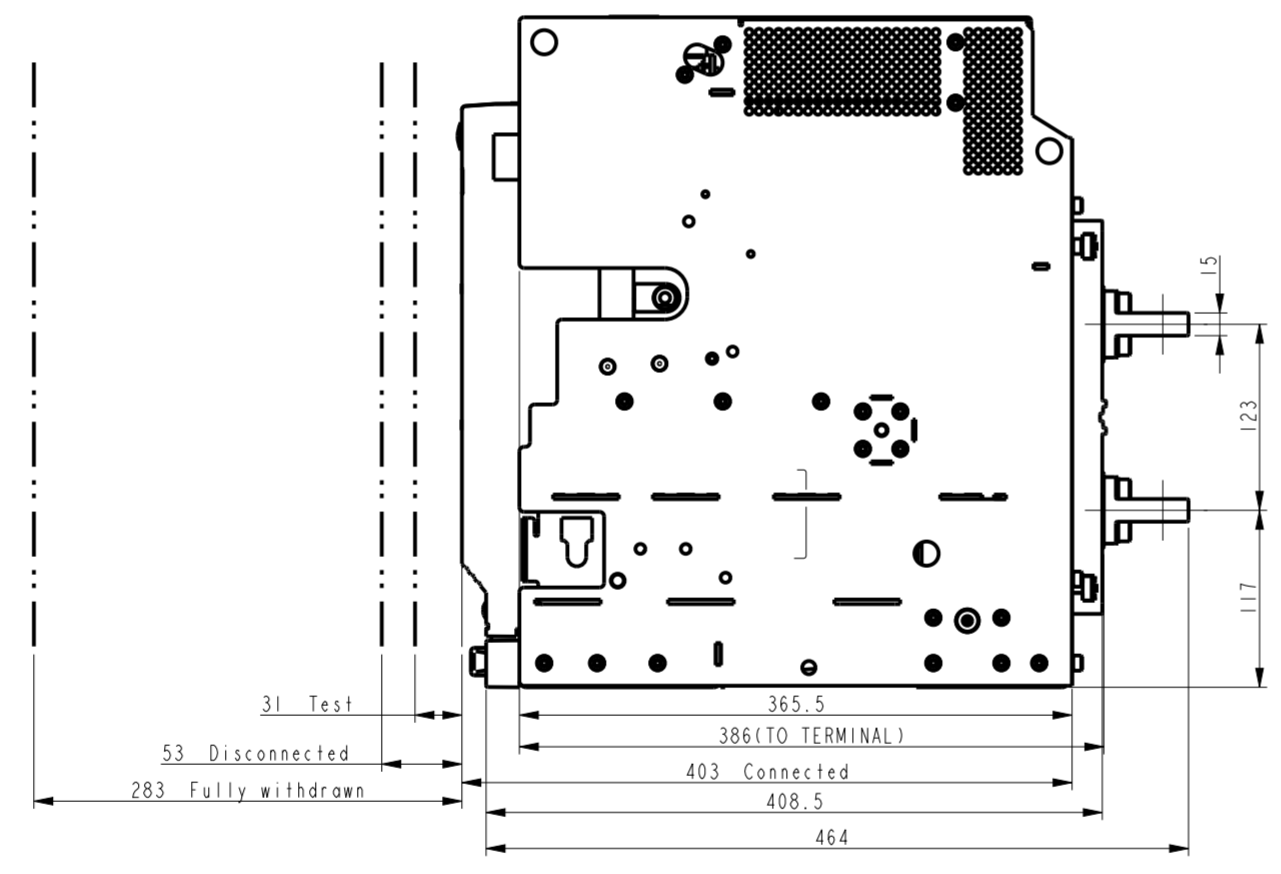
REV.	DESCRIPTION	DATE	APPROVED
1	R1329019	12/02/13	RAJESH
2	C003032	02/24/15	VS
3	C035056	01/05/18	SANDEEP
4	C046810	05/31/18	GUPTA



VERTICAL TERMINAL

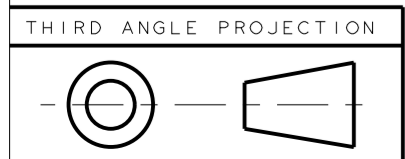


HORIZONTAL TERMINAL



PV3

NOTE:  
 COPPER WORK MUST BE SUPPORTED WITHIN 200mm OF BREAKER CONNECTIONS - BUS BAR OR CABLES  
 ALL BUS BAR CONNECTIONS TO BE TIGHTENED TO 50Nm TORQUE



Article or Material Must Conform to REACH Procedure SI900000 Sec. 14 | Article or Material Must Conform to RoHS Procedure SI900000 Sec. 13 | Part must conform to SI 900000 Sect. 4, Toxicity Procedure

FOR ADDITIONAL INFO REFER TO:	SIGNATURES	DATE
APPLIED PRACTICES	MODEL RAJEEV	11/26/13
DIMENSIONS ARE IN MILLIMETERS	DETAIL RAJEEV	11/26/13
<b>UNLESS OTHERWISE SPECIFIED IN DRAWING</b>	CHECKED RAJESH	11/26/13
	ENGRG	
	MFG	
	QUALITY	
TOLERANCE ON:	ISSUED	
1 PL DECIMALS ± 0.3		
2 PL DECIMALS ± 0.13		
ANGLES ± 0.5		
FRACTIONS ±		
FINISH		
CRITICAL TO QUALITY CHARACTERISTIC	DRAWING FILE: 10112623PV3	
	SOLID MODEL: 10112623PV3	

**GE Energy**

**OUTLINE CASSETTE F1 4P WITH ADAPTER MINIGUARD**

SIZE: DRAWING: 10112623 4

SCALE: 1:5 REF. No: SHEET 1 OF 1

16

15

14

13

12

10112623 4

METRIC

16

15

14

13

12

11

METRIC