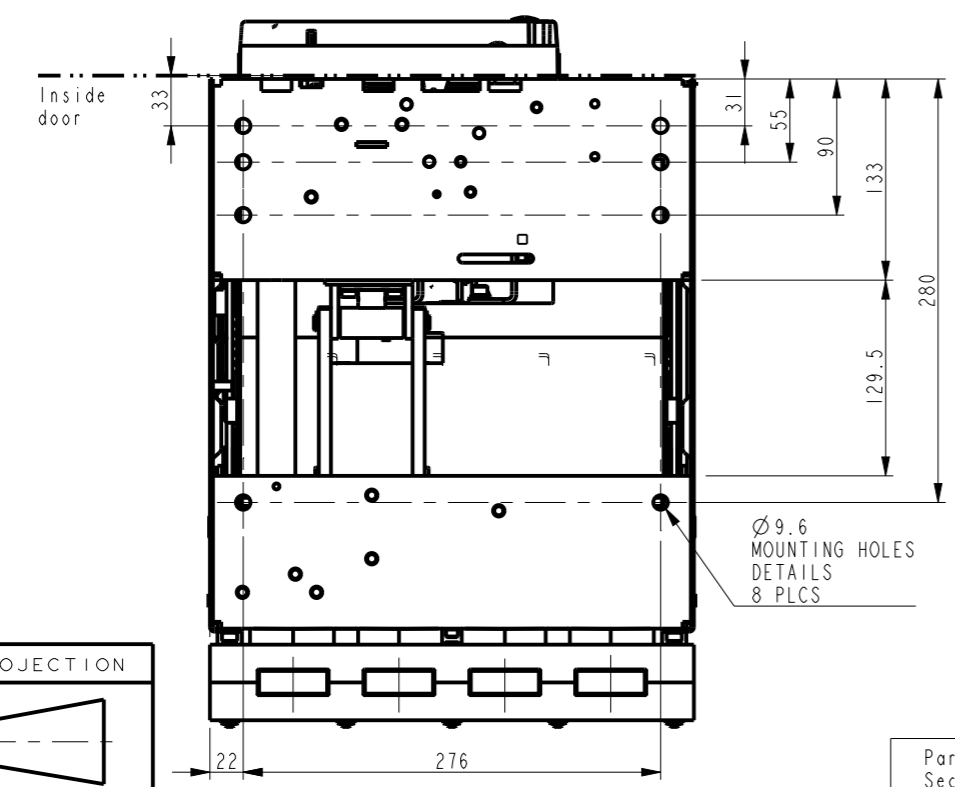
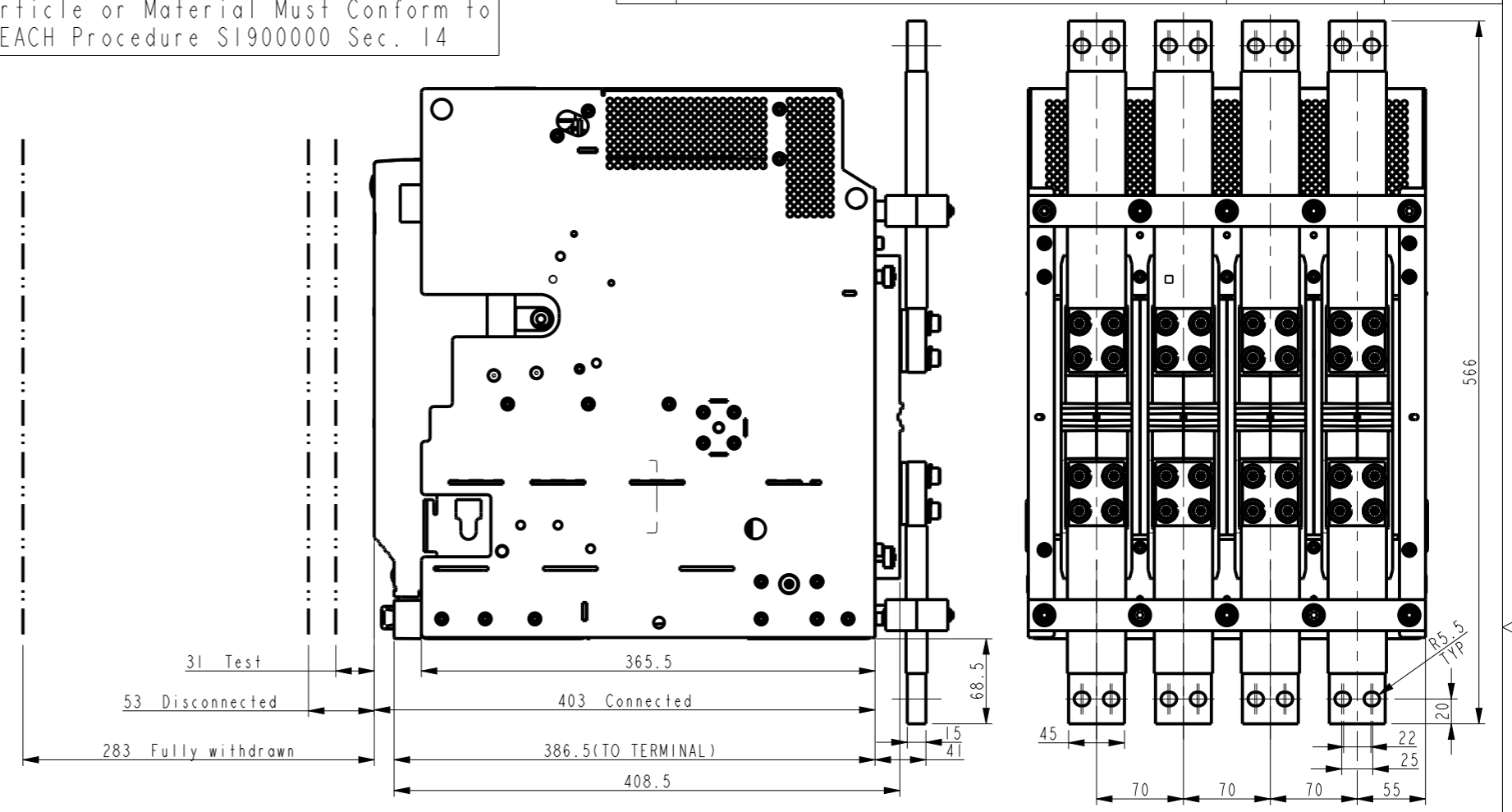
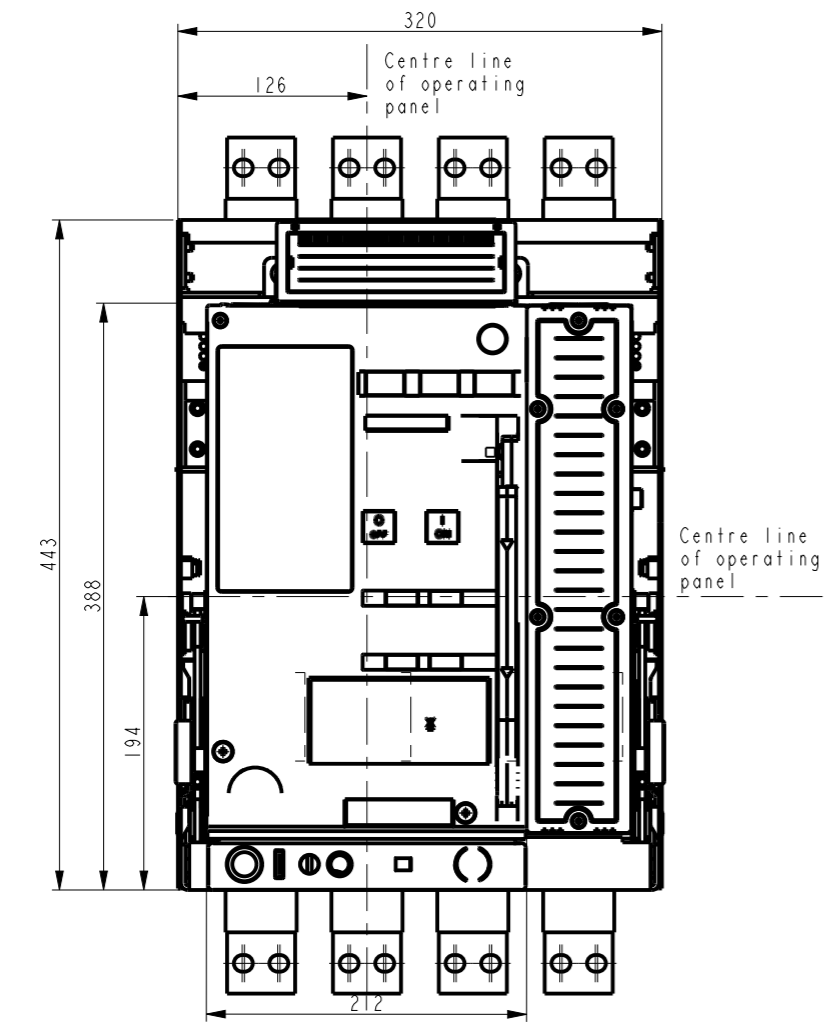


GE PROPRIETARY AND CONFIDENTIAL INFORMATION
This document is the property of General Electric Company ("GE") and contains proprietary information of GE. This document is loaned on the express condition that neither it nor the information contained therein shall be disclosed to others without the express written consent of GE Energy, and that the information shall be used by the recipient only as approved expressly by GE Energy. This document shall be returned to GE upon its request. This document may be subject to certain restrictions under U.S. export control laws and regulations.

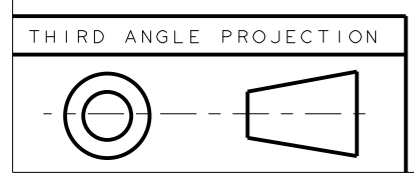
| REVISIONS | | | | |
|-----------|-------------|----------|----------|---------|
| REV. | DESCRIPTION | DATE | APPROVED | |
| 1 | R1329019 | 11/26/13 | RAJEEV | RAJESH |
| 2 | C003032 | 02/24/15 | | VS |
| 3 | C035056 | 11/24/17 | RAGHAV | SANDEEP |
| 4 | C046810 | 05/31/18 | RAGHAV | GUPTA |

Article or Material Must Conform to RoHS Procedure SI900000 Sec. 13
Article or Material Must Conform to REACH Procedure SI900000 Sec. 14



PV4

NOTE:
COPPER WORK MUST BE SUPPORTED WITHIN 200mm OF BREAKER CONNECTIONS - BUS BAR OR CABLES
ALL BUS BAR CONNECTIONS TO BE TIGHTENED TO 50Nm TORQUE



Part must conform to SI 900000 Sect. 4, Toxicity Procedure

| FOR ADDITIONAL INFO REFER TO: | SIGNATURES | | DATE |
|--|---------------|-------------|----------|
| APPLIED PRACTICES | MODEL | RAJEEV | 11/26/13 |
| DIMENSIONS ARE IN MILLIMETERS | DETAIL | RAJEEV | 11/26/13 |
| UNLESS OTHERWISE SPECIFIED IN DRAWING | CHECKED | RAJESH | 11/26/13 |
| TOLERANCE ON: | ENGRG | . | . |
| 1 PL DECIMALS ± 0.3 | MFG | . | . |
| 2 PL DECIMALS ± 0.13 | QUALITY | . | . |
| ANGLES ± 0.5 | ISSUED | . | . |
| FRACTIONS ± | DRAWING FILE: | 10112623PV4 | |
| FINISH | SOLID MODEL: | 10112623PV4 | |
| CRITICAL TO QUALITY CHARACTERISTIC | | | |

GE Energy

TITLE: **OUTLINE CASSETTE F1 4P
FLAT FRONT
MINIGUARD**

SIZE: A3 DRAWING: 10112623 REV: 4

SCALE: 1:5 REF. No: SHEET 1 of 1

METRIC