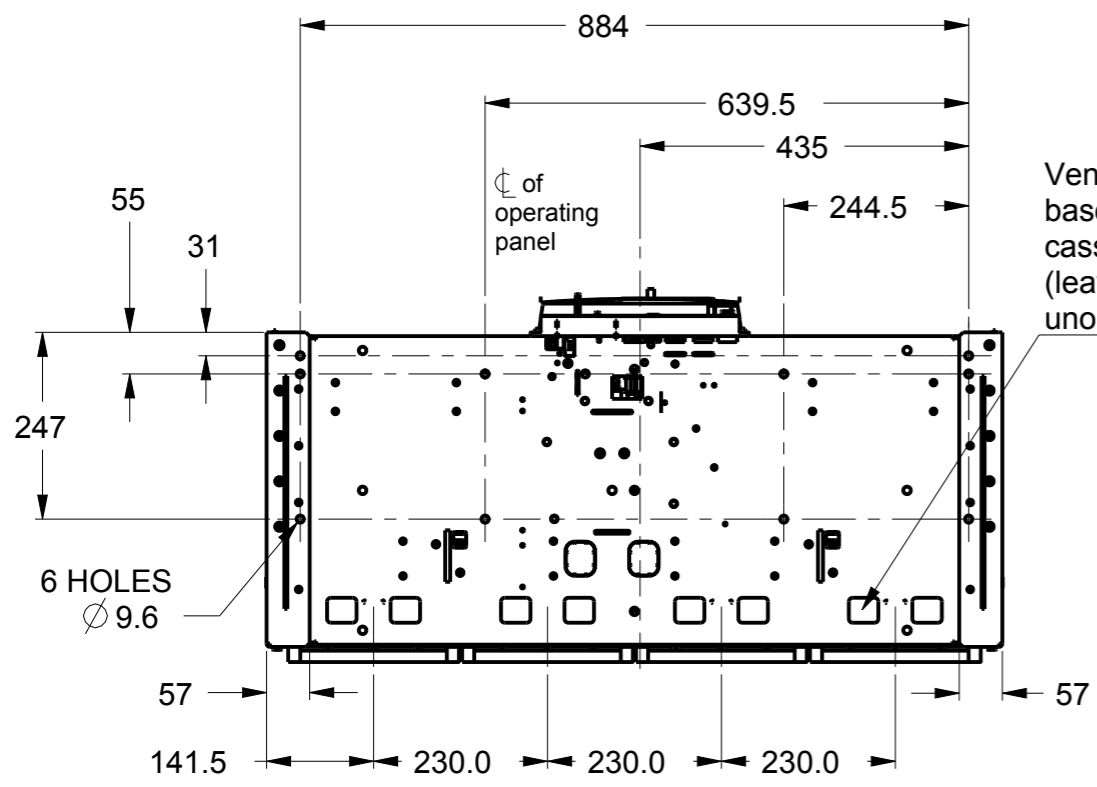


SHEET 1
REV 1
10113494
DRAWING NO.
A3

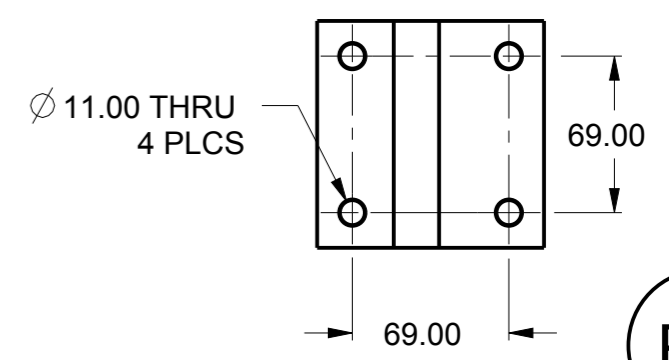
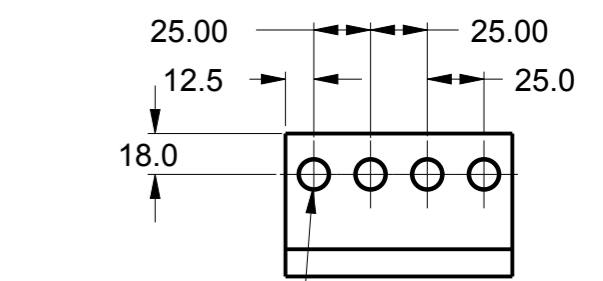
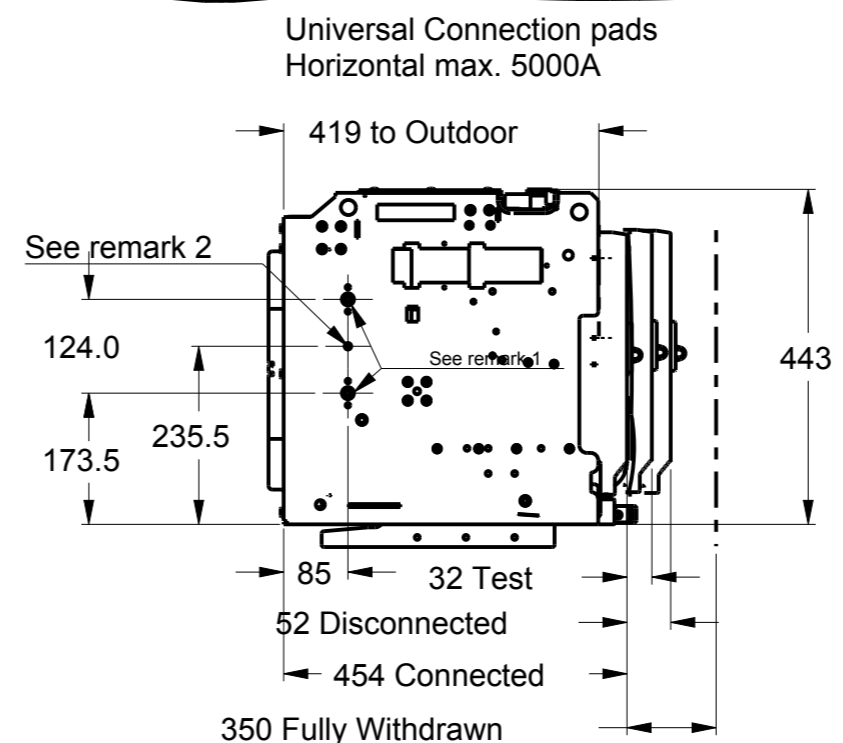
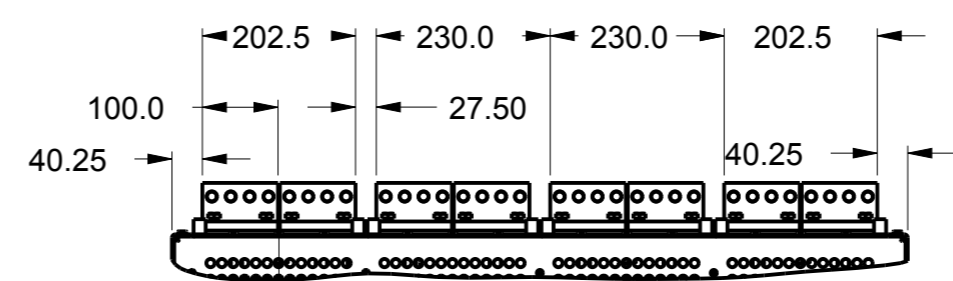
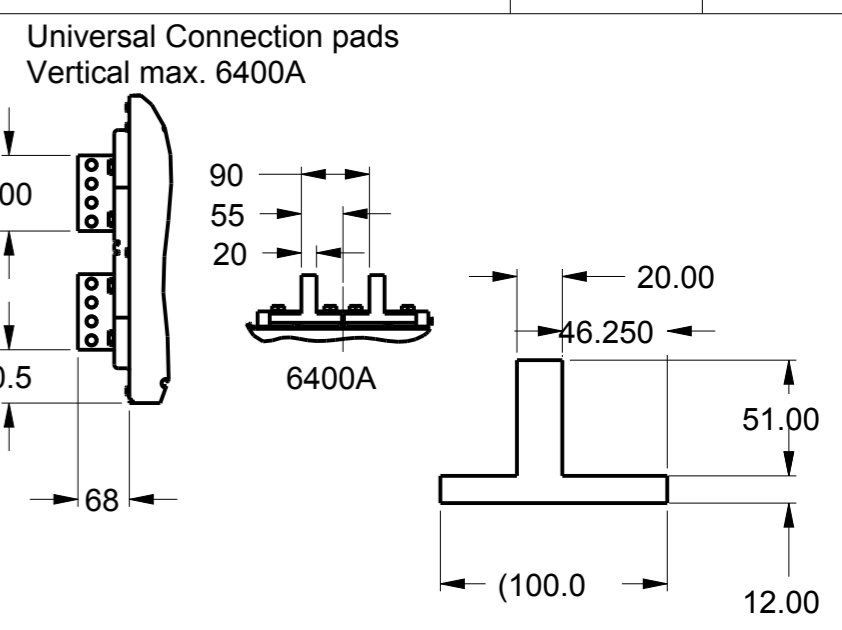
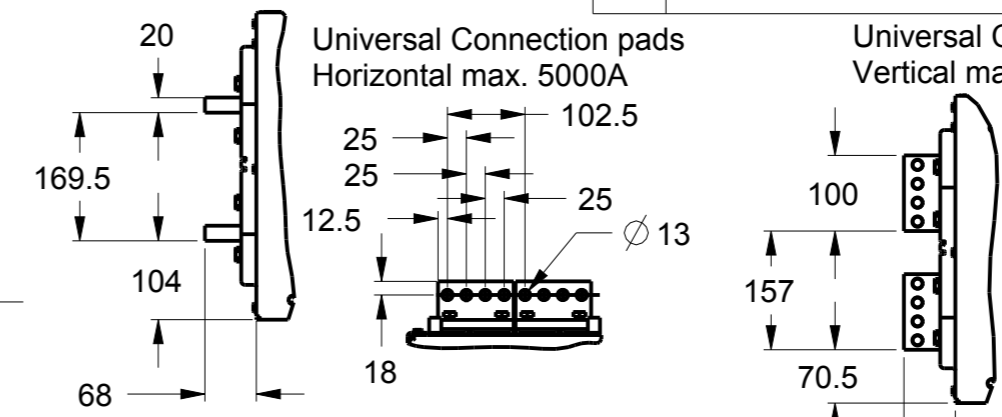
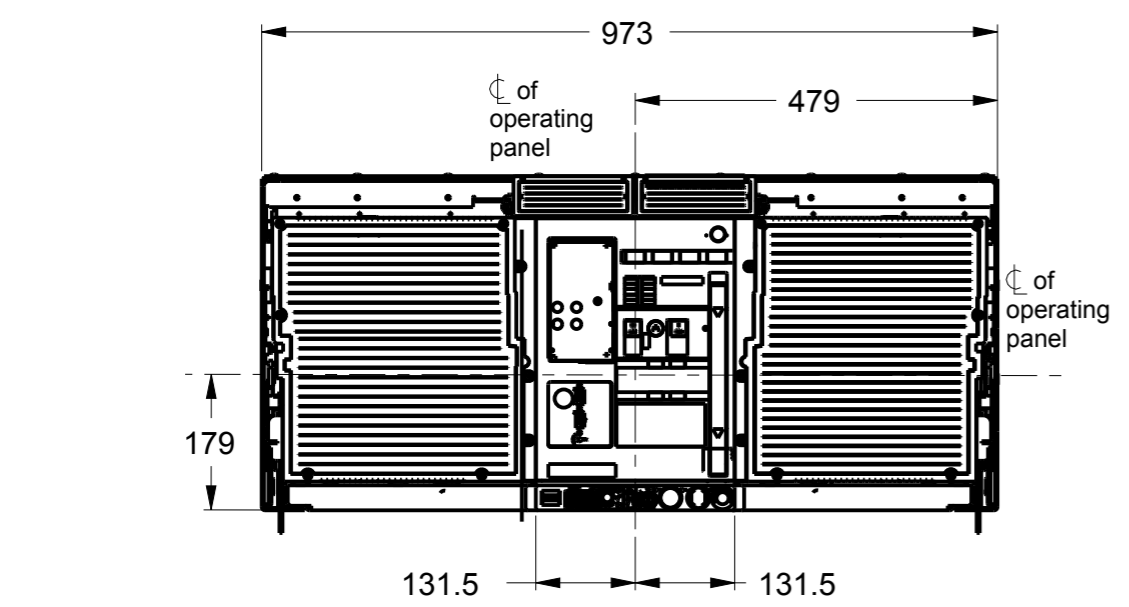
GE PROPRIETARY AND CONFIDENTIAL INFORMATION
 This document is the property of General Electric Company ("GE") and contains proprietary information of GE. This document is loaned on the express condition that neither it nor the information contained therein shall be disclosed to others without the express written consent of GE Energy, and that the information shall be used by the recipient only as approved expressly by GE Energy. This document shall be returned to GE upon its request. This document may be subject to certain restrictions under U.S. export control laws and regulations.

REVISIONS				
REV.	DESCRIPTION	DATE	APPROVED	
1	C035056	VINU	02/05/18	SANDEEP

METRIC

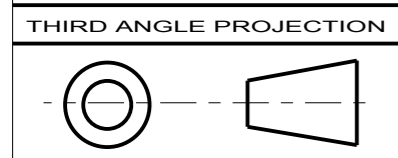


Ventilation in base of cassette (leave unobstructed)



PV1

- Remarks
 1. M8 hole to be used with earthing kit when used at top available in right side only
 2. One M6 hole on left hand side is available for earthing.



Article or Material Must Conform to REACH Procedure SI900000 Sec. 14
 Article or Material Must Conform to RoHS Procedure SI900000 Sec. 13

Part must conform to SI 900000 Sect. 4, Toxicity Procedure

FOR ADDITIONAL INFO REFER TO:		SIGNATURES		DATE
APPLIED PRACTICES	MODEL	RAGHAV		05/26/17
DIMENSIONS ARE IN MILLIMETERS UNLESS OTHERWISE SPECIFIED IN DRAWING	DETAIL	RAGHAV		05/26/17
TOLERANCE ON: 1 PL DECIMALS ± 0.3 2 PL DECIMALS ± 0.13 ANGLES ± 0.5 FRACTIONS ±	CHECKED	SANDEEP		05/26/17
FINISH	ENGRG			
CRITICAL TO QUALITY CHARACTERISTIC	MFG			
	QUALITY			
	ISSUED			
	DRAWING FILE:	10113494PV1		
	SOLID MODEL:	10113494PV1		

GE Energy
TITLE OUTLINE IEC FR3 4 POLE DRAWOUT
6400A
ENTELLIGUARD G
 SIZE: A3 DRAWING: 10113494 REV: 1
 SCALE: 1:10 REF. No.: SHEET 1 of 1

METRIC