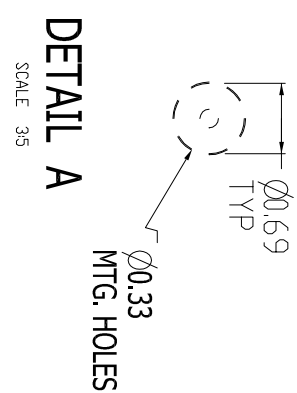
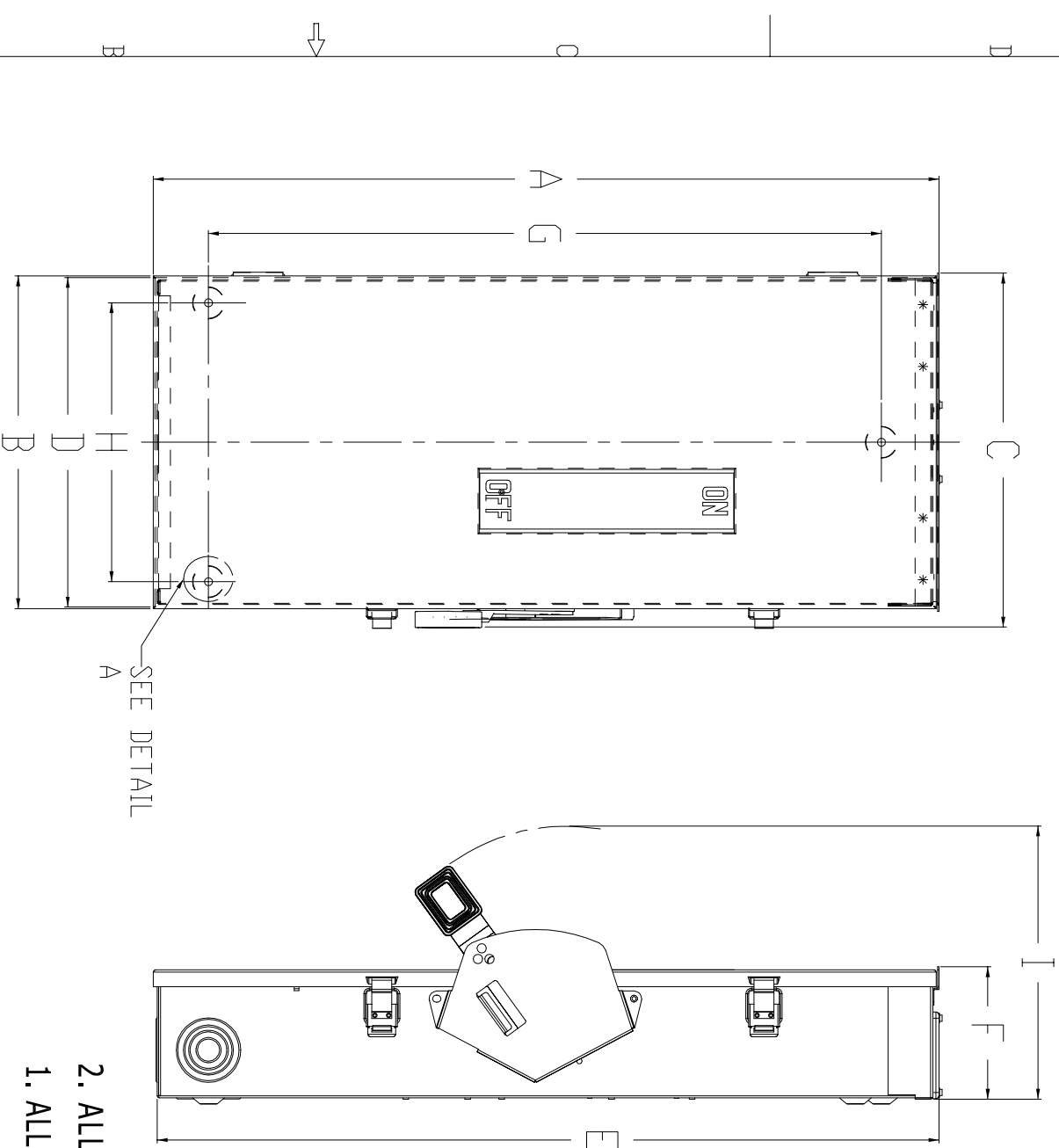


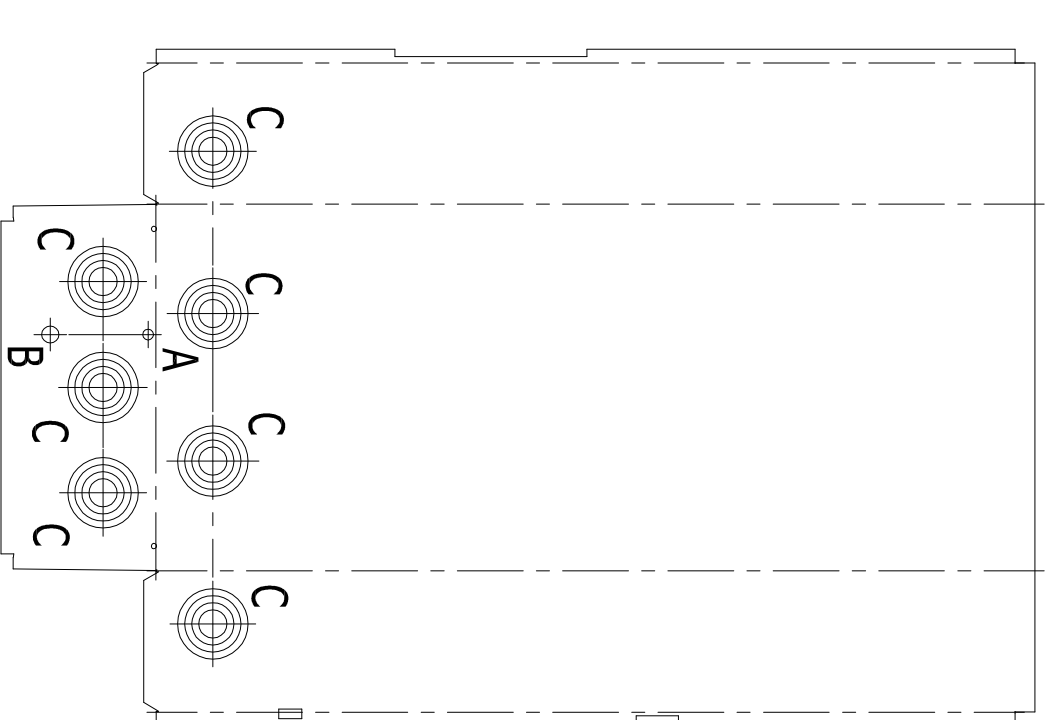
GE PROPRIETARY AND CONFIDENTIAL INFORMATION  
 This document is the property of General Electric Company, GE2 and contains  
 proprietary information. It is to be used only for the purposes specified in the  
 purchase order. The user shall not copy, reproduce, or disseminate this  
 information without the express written consent of General Electric Company.  
 If you have any questions, please contact your GE representative.  
 If you have any comments, please contact your GE representative.  
 If you have any suggestions, please contact your GE representative.

REV	DESCRIPTION	DATE	APPROVED
01	RI425889	12/19/14	

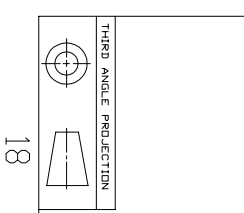


- NOTES:**
1. ALL DIMENSIONS HAVE +0.125 TOLERANCE.
  2. ALL DIMENSIONS ARE IN INCHES.

DIMENSION TABLE									
GCAT NO.	A	B	C	D	E	F	G	H	I
MHF224NR									
MHF324NR									
MHF364R	31.73	13.43	14.32	13.31	31.44	5.35	27.18	11.27	9.50
MHU364R									



KNOCKOUT TABLE			QTY.
SYM.	SIZE		
A	KO 9/32		1
B	KO 1/2		1
C	KO 1 X 1 1/2 X 2 X 2 1/2		7



Part must conform to SI 900000  
 Sect. 4, Toxicity Procedure

FOR ADDITIONAL INFO REFER TO	SIGNATURES	DATE
ASSEMBLERS	MODEL	12/19/14
DRAWING	DETAIL	12/19/14
CHECKED	CHKD	12/19/14
ENGRG	JMH	12/19/14

UNLESS OTHERWISE SPECIFIED IN THIS DRAWING  
 1. DIMENSIONS ARE IN INCHES  
 2. PL DECIMALS ± 0.02  
 3. PL DECIMALS ± 0.005  
 FRACTIONS ± 1/16

FINISH: ✓ BRASS PLATE 10103093SH9

SCALE: 3/8

REV: 1

10103093SH9

MIDWEST ELECTRIC

OUTLINE DRAWING HEAVY DUTY  
 NEMA TYPE 3R  
 200A