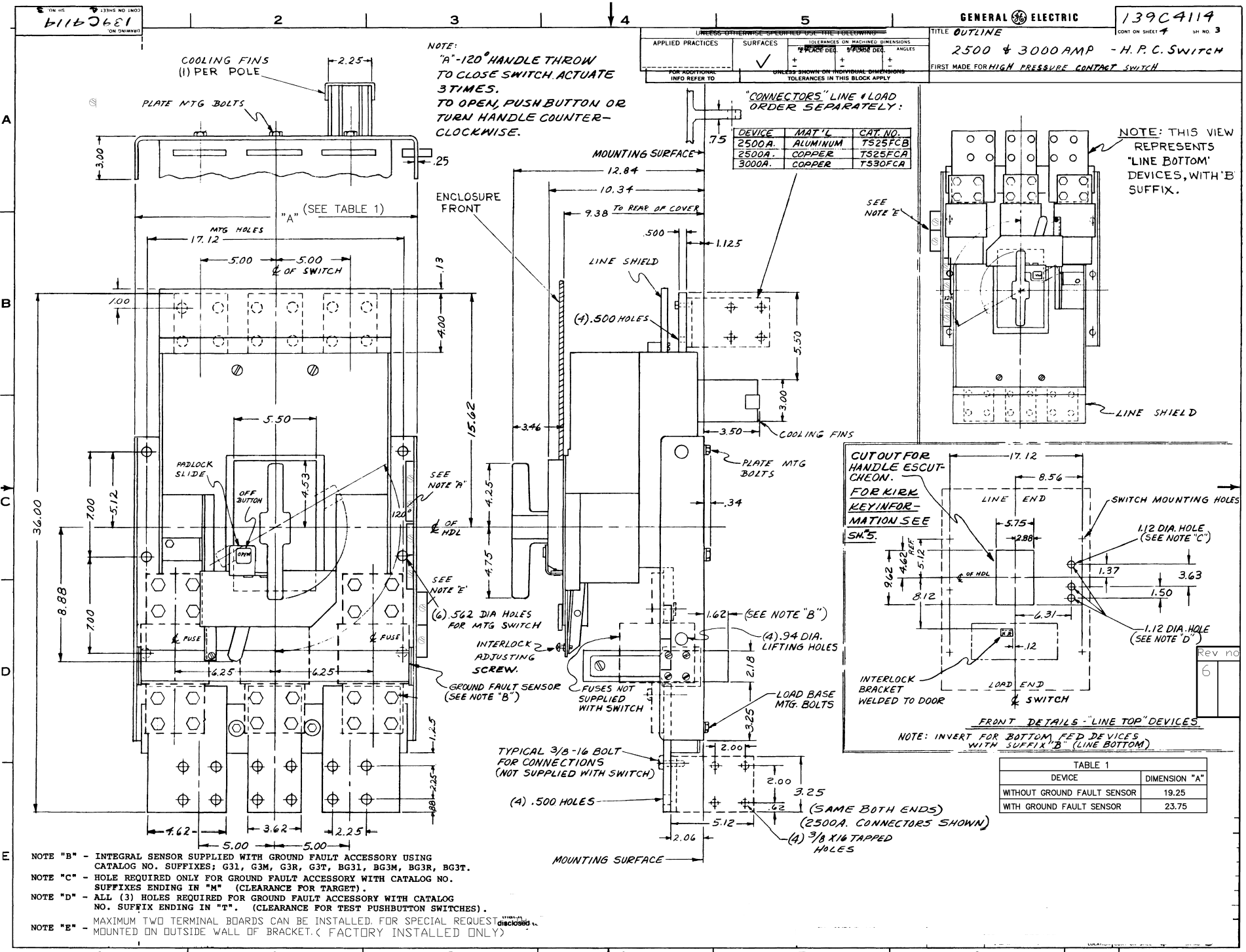


UNLESS OTHERWISE SPECIFIED USE THE FOLLOWING			
APPLIED PRACTICES	SURFACES	TOLERANCES ON MACHINED DIMENSIONS	ANGLES
✓	+	± FRACTION DEC.	± FRACTION DEC.
FOR ADDITIONAL INFO REFER TO		UNLESS SHOWN ON INDIVIDUAL DIMENSIONS TOLERANCES IN THIS BLOCK APPLY	

TITLE **OUTLINE**  
**2500 & 3000 AMP - H.P.C. SWITCH**  
 FIRST MADE FOR HIGH PRESSURE CONTACT SWITCH

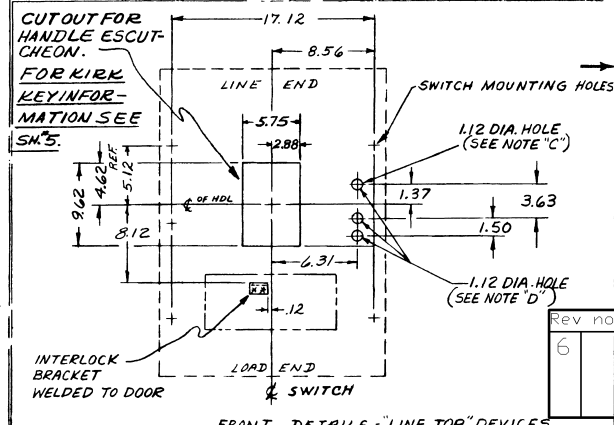


NOTE:  
 "A"-120° HANDLE THROW  
 TO CLOSE SWITCH. ACTUATE  
 3 TIMES.  
 TO OPEN, PUSH BUTTON OR  
 TURN HANDLE COUNTER-  
 CLOCKWISE.

"CONNECTORS" LINE & LOAD  
 ORDER SEPARATELY:

DEVICE	MAT'L	CAT. NO.
2500A.	ALUMINUM	TS25FCB
2500A.	COPPER	TS25FCA
3000A.	COPPER	TS30FCA

NOTE: THIS VIEW  
 REPRESENTS  
 "LINE BOTTOM"  
 DEVICES, WITH "B"  
 SUFFIX.



NOTE "B" - INTEGRAL SENSOR SUPPLIED WITH GROUND FAULT ACCESSORY USING CATALOG NO. SUFFIXES; G31, G3M, G3R, G3T, BG31, BG3M, BG3R, BG3T.  
 NOTE "C" - HOLE REQUIRED ONLY FOR GROUND FAULT ACCESSORY WITH CATALOG NO. SUFFIXES ENDING IN "M" (CLEARANCE FOR TARGET).  
 NOTE "D" - ALL (3) HOLES REQUIRED FOR GROUND FAULT ACCESSORY WITH CATALOG NO. SUFFIX ENDING IN "T". (CLEARANCE FOR TEST PUSHBUTTON SWITCHES).  
 NOTE "E" - MAXIMUM TWO TERMINAL BOARDS CAN BE INSTALLED. FOR SPECIAL REQUEST MOUNTED ON OUTSIDE WALL OF BRACKET. (FACTORY INSTALLED ONLY)

TABLE 1

DEVICE	DIMENSION "A"
WITHOUT GROUND FAULT SENSOR	19.25
WITH GROUND FAULT SENSOR	23.75

Rev no  
 6