

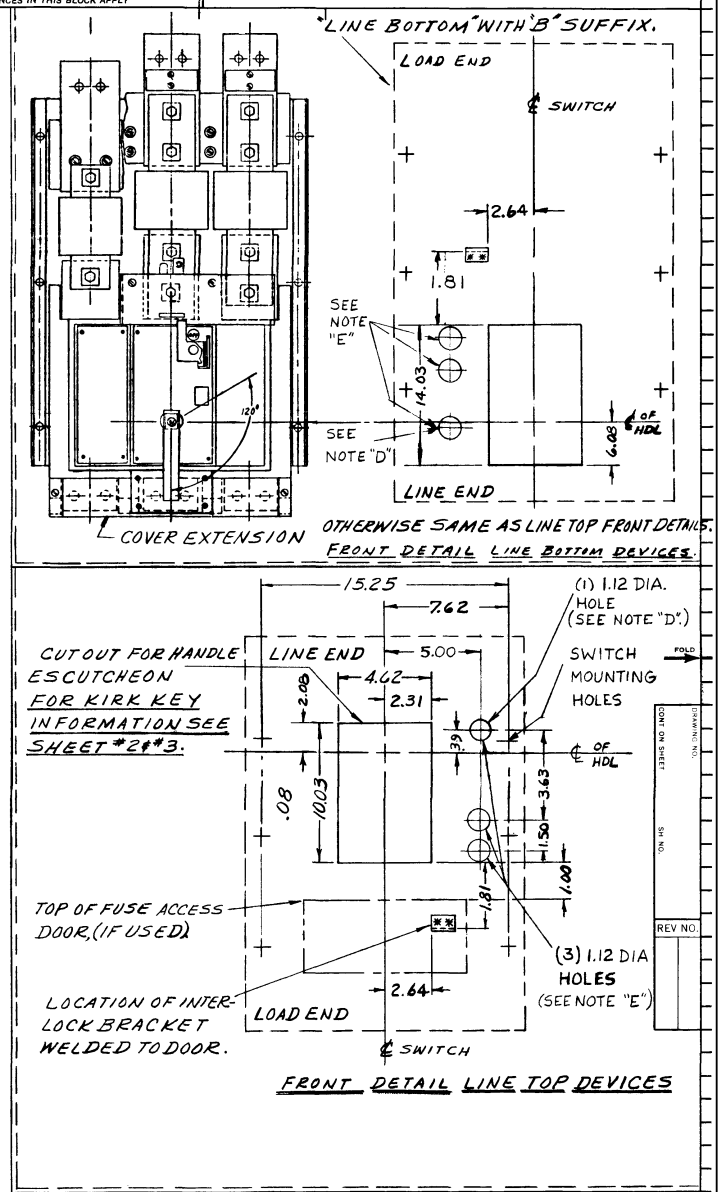
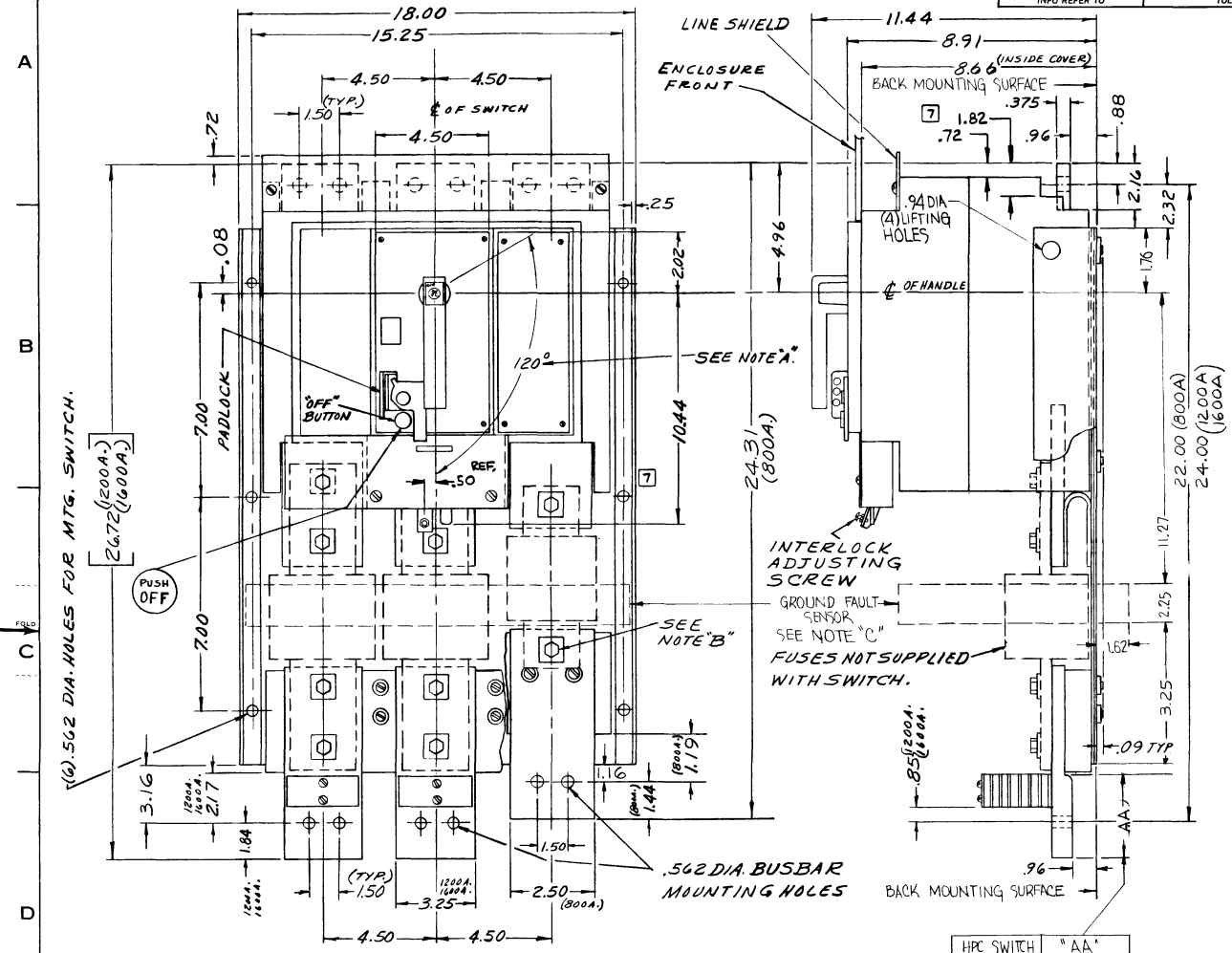
139C4219
(ON THIS SHEET) (ON DRAWING)

GENERAL ELECTRIC

139C4219
(CONT. ON SHEET 2) (SH. NO. 1)

APPLIED PRACTICES	SURFACES	TOLERANCES ON MACHINED DIMENSIONS
FOR ADDITIONAL INFO REFER TO	✓	2 PLACE DEC. ± .02 3 PLACE DEC. ± .005 ANGLES
UNLESS SHOWN ON INDIVIDUAL DIMENSIONS TOLERANCES IN THIS BLOCK APPLY		

TITLE **OUTLINE**
800A.-1600A. HPR SWITCH
 FIRST MADE FOR



- NOTE "A" - 120° HANDLE THROW. CYCLE ONCE TO TURN ON. TO TURN OFF, PUSH BUTTON.
 NOTE "B" - 1/2-13 BOLT TYP. FOR FUSE CONNECTIONS SUPPLIED WITH SWITCH.
 NOTE "C" - INTEGRAL SENSOR SUPPLIED WITH GROUND FAULT ACCESSORY USING CAT NO. SUFFIXES; G31, G3M, G3R, G3T, BG31, BG3M, BG3R, & BG3T. EXTENDS AS SHOWN
 NOTE "D" - HOLE REQUIRED ONLY FOR GROUND FAULT ACCESSORY WITH CAT. NO. SUFFIXES ENDING IN "M" (CLEARANCE FOR TARGET)
 NOTE "E" - ALL (3) HOLES REQ'D FOR GROUND FAULT ACCESSORY WITH CAT. NO. SUFFIX ENDING IN "T." (CLEARANCE FOR TEST PUSH BUTTON SWITCHES)

HPR SWITCH	"AA"
800 A	2.50
1200 A	3.38
1600 A	3.38