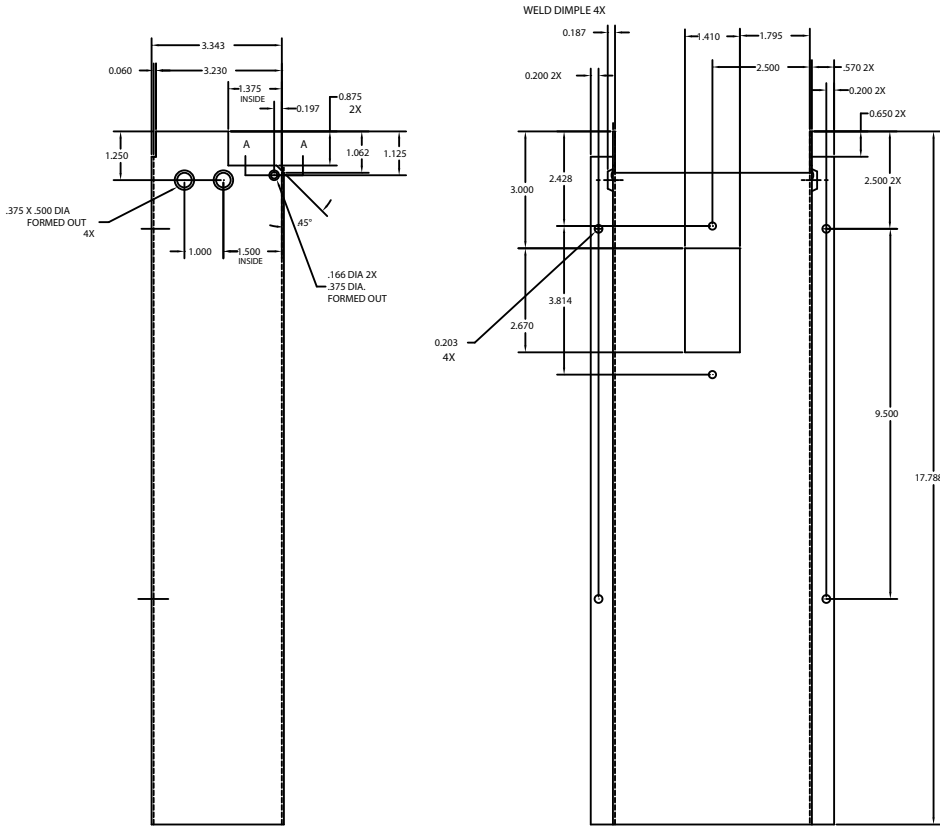



MATERIAL (B8A66E1) 16 GAUGE  
 LOCKFORMING QUALITY  
 GALVANIZED STEEL  
 REF. 265A526SP2  
 ALT. MAT'L: B8A66G1

**Confidential And Proprietary**  
 THIS DOCUMENT CONTAINS PROPRIETARY AND CONFIDENTIAL INFORMATION OF MIDWEST ELECTRIC PRODUCTS, INC. IT IS LOANED ON CONDITION THAT IT AND OTHER INFORMATION THEREIN SHALL NOT BE USED BY RECIPIENT NOR BE DISCLOSED TO OTHERS EXCEPT AS EXPRESSLY APPROVED BY MIDWEST ELECTRIC PRODUCTS, INC. ANY DOCUMENT CONTAINING SUCH INFORMATION SHALL BE RETURNED ON REQUEST.

REVISIONS			
Rev.	Changed By:	CR	DATE
1	RDW	R0301989	05/22/03
2	SCS	R0305752	12/10/03
3	SAT	C014690	06/30/16
4			



P4

* = Critical To Quality		MIDWEST ELECTRIC PRODUCTS, INC. Mankato, MN	
Dr. By: RDW	Date: 5/30/03		TITLE: TELE-TV ACCESSORY BODY
Ck. By:	Date:		
CR: R0301989	Date: 5/30/03	DWG NO: 164C3600	
Unless Otherwise Specified			
Tolerances On: 3 Pl. Decimals ± .010 2 Pl. Decimals ± .030 Angles ± 1/2° Holes ± .003 Dimensions Are In Inches		AutoCad Generated	
		SCALE: 1:1	SIZE: C
		SHEET 0F	1