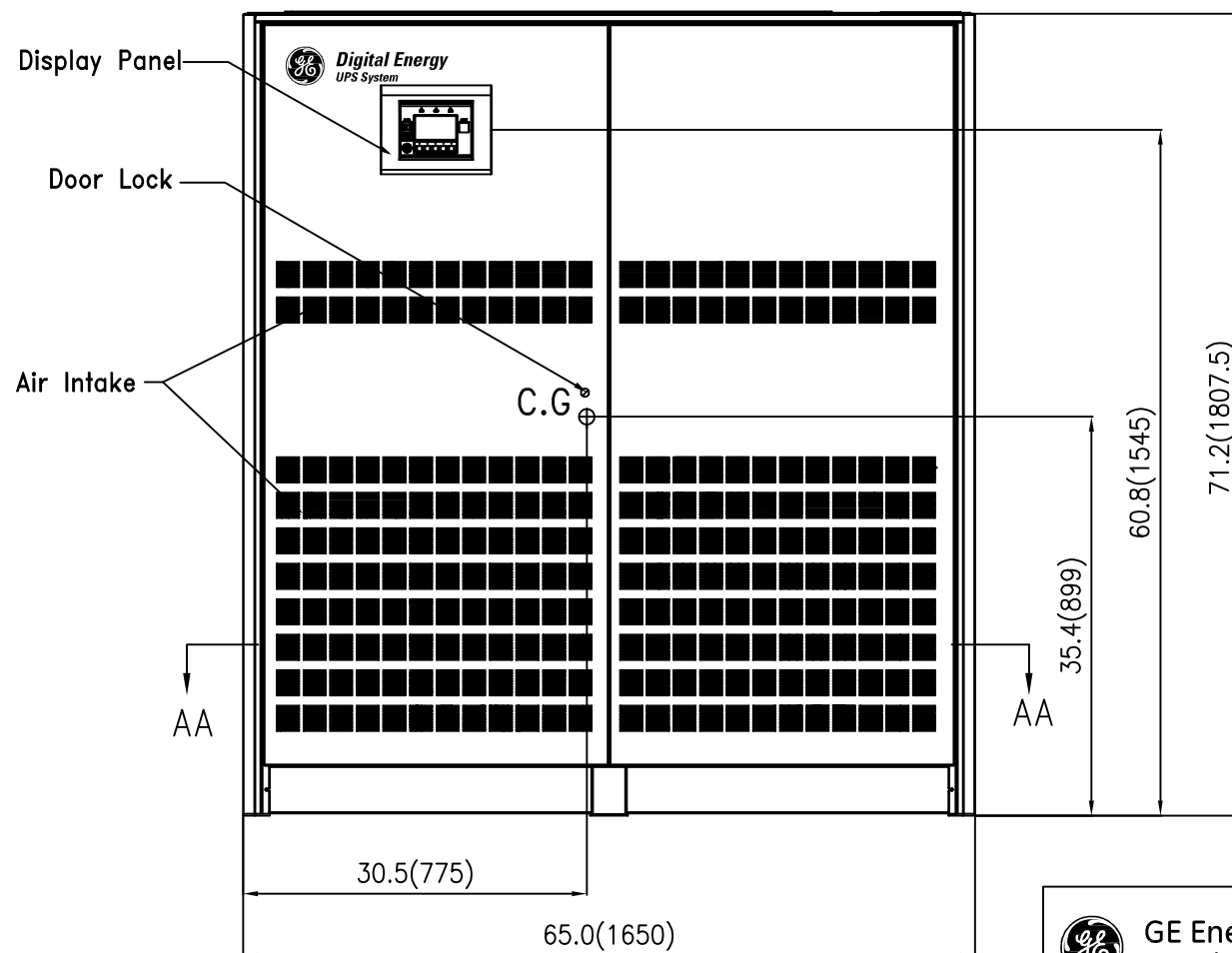
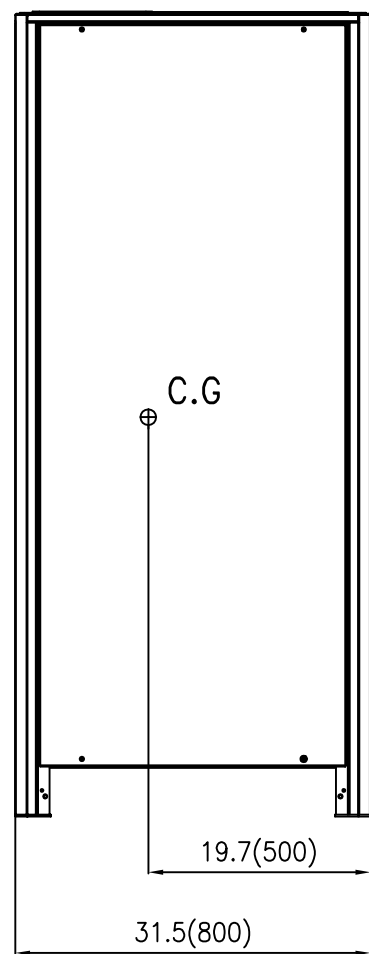


LH SIDE VIEW



NOTE:

1. Dimensions are in Inches (Millimeters).
2. UPS Operating Temperature: 32°F–104°F (0–40°C).
3. 18" (457mm) Minimum clearance required above the unit for heat rejection.
4. Front access for service and Maintenance.
5. Do not tilt the UPS more than 10°.
6. For Section AA details refer to sheet 3.

C.G = Center of Gravity

SG225–300kVA Options	Weight		Heat Rejection				Floor Loading	
			Double Conversion		eBoost			
	Lbs	kg	Btu/Hr	kW	Btu/Hr	kW	lbs/Sq Ft	kg/Sq Mtr
225 With 5th Filter	3086	1400	58469	17.1	12668	3.7	218	1061
225 With 5th Filter+RPA Inductor	3197	1450	58469	17.1	13652	4.0	226	1099
300 With 5th Filter	3086	1400	83408	24.4	15937	4.7	218	1061
300 With 5th Filter+RPA Inductor	3197	1450	83408	24.4	17065	5.0	226	1099



GENERAL ELECTRIC COMPANY

MECHANICAL OUTLINE

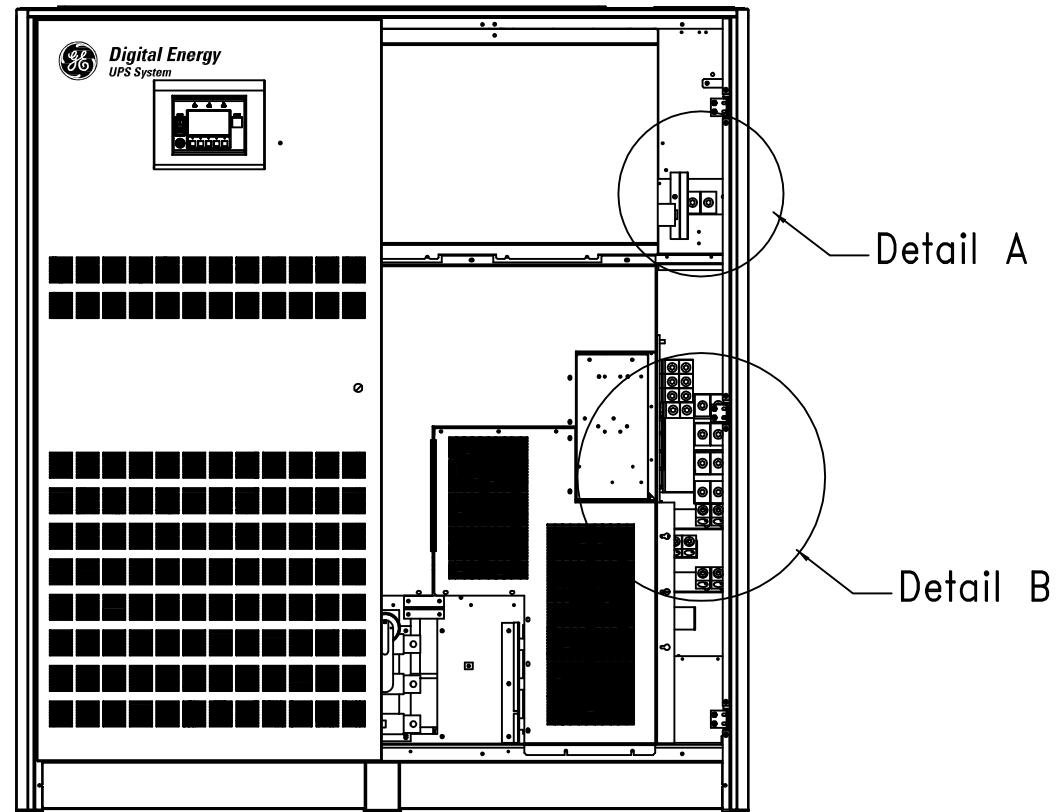
SG Series Uninterruptible Power Supply (UPS)  
225-300kVA UL listed with eBoost™ technology

FIRST MADE FOR: ---

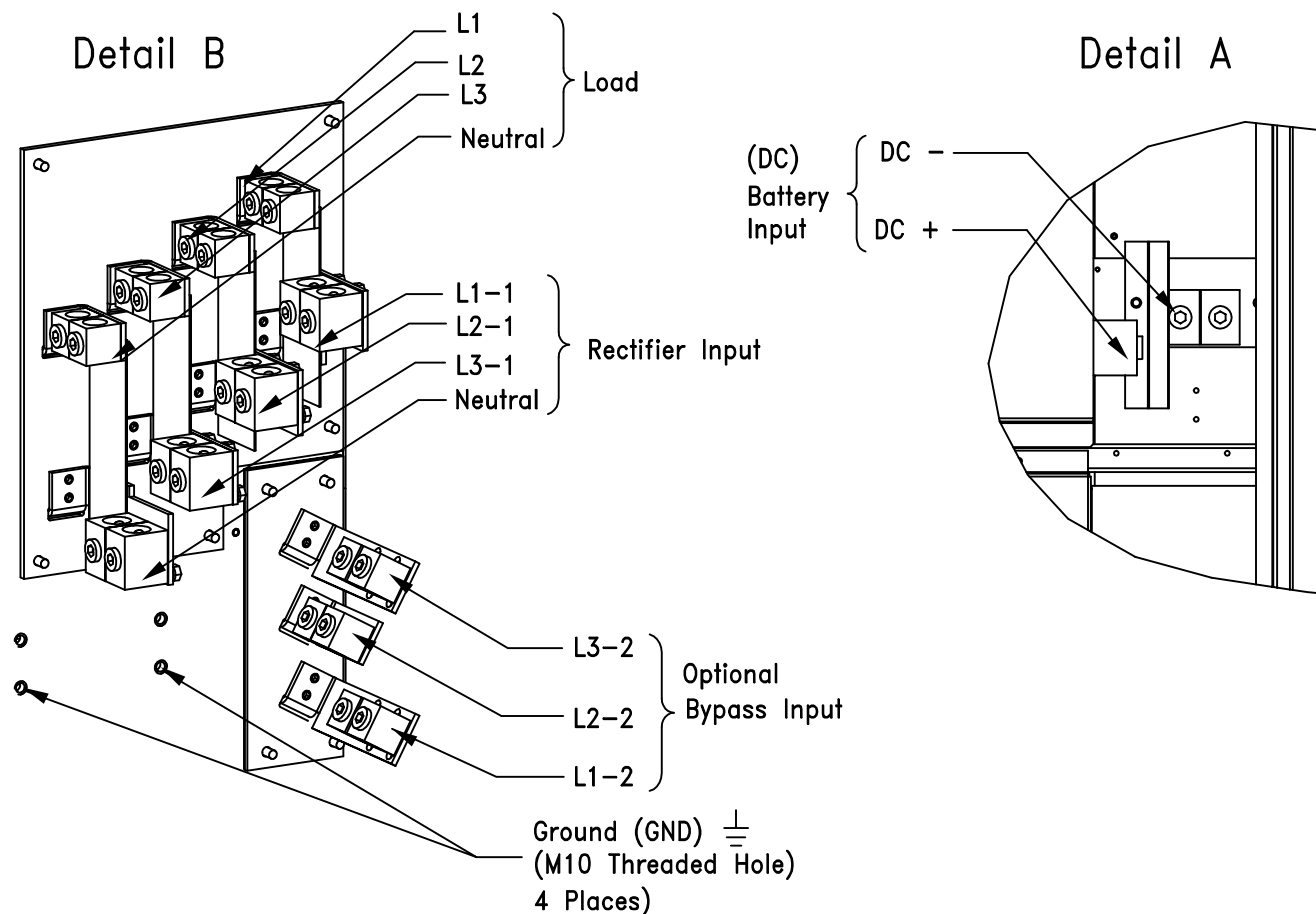
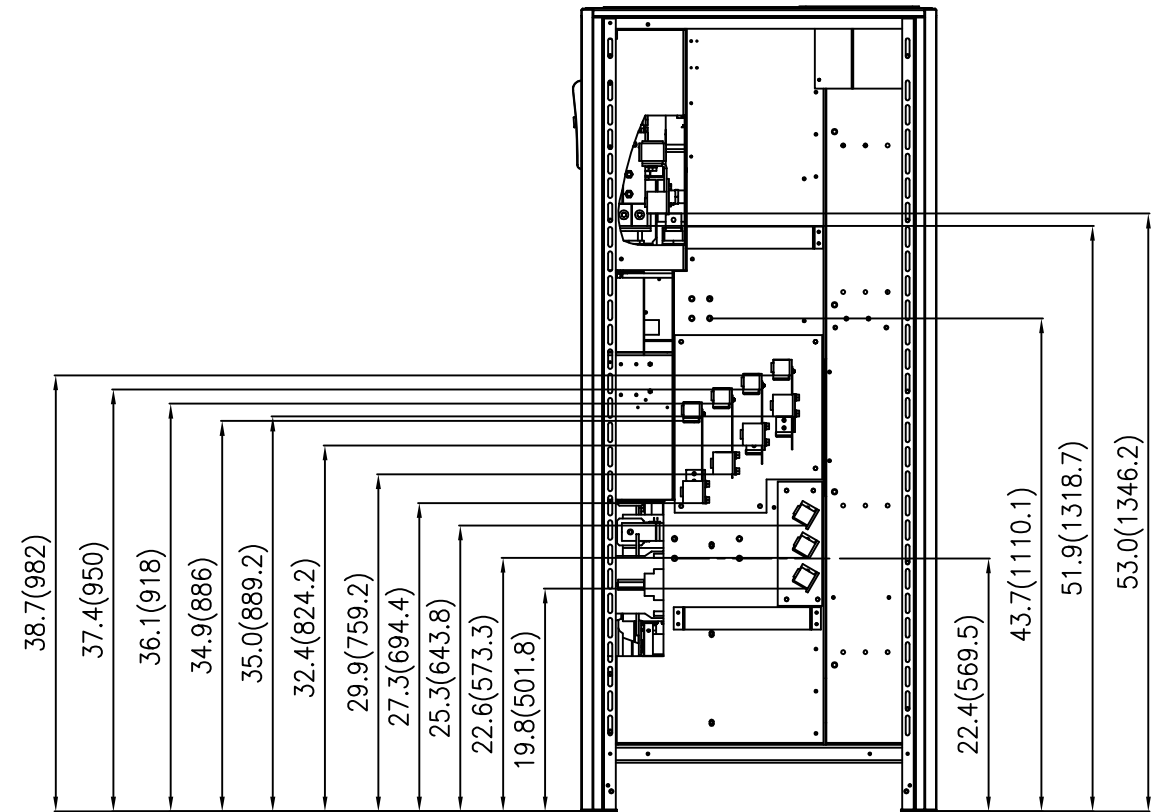
SIZE B	CAGE CODE ---	DWG NO <b>202 00082 01</b>	REV : 1.0
SCALE: N.T.S	DWG Date	03/08/2010	SHEET 1 of 3

All rights for transmission, duplicating or reprinting reserved

FRONT VIEW WITH SAFETY PANEL REMOVED



RH SIDE VIEW WITH SIDE PANEL REMOVED



NOTE:  
1. All Dimensions are in inches (Millimeters)

Maximum Recommended Cable Configuration.

kVA	Rectifier Input	Bypass Input	DC Input	Output (Load)	Neutrals
225	2x500 MCM	2x500 MCM	2x750 MCM	2x500 MCM	2x500 MCM
300	2x750 MCM	2x500 MCM	2x750 MCM	2x500 MCM	2x500 MCM

\* Based on standard wiring practices and available bending space.



GENERAL ELECTRIC COMPANY

TERMINAL LUG DETAIL

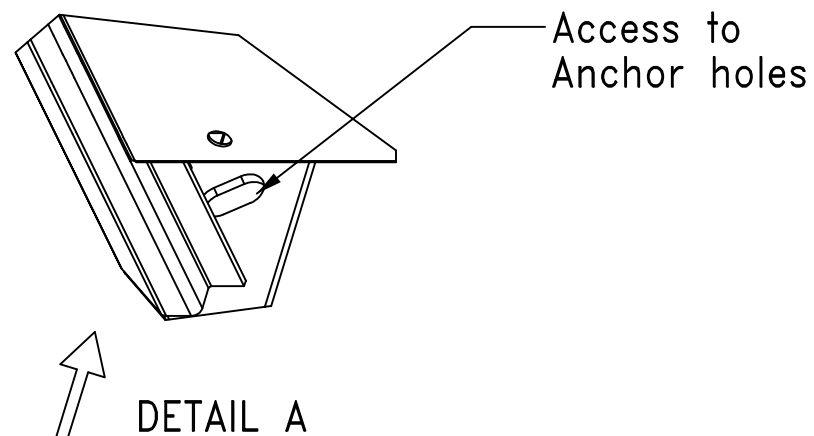
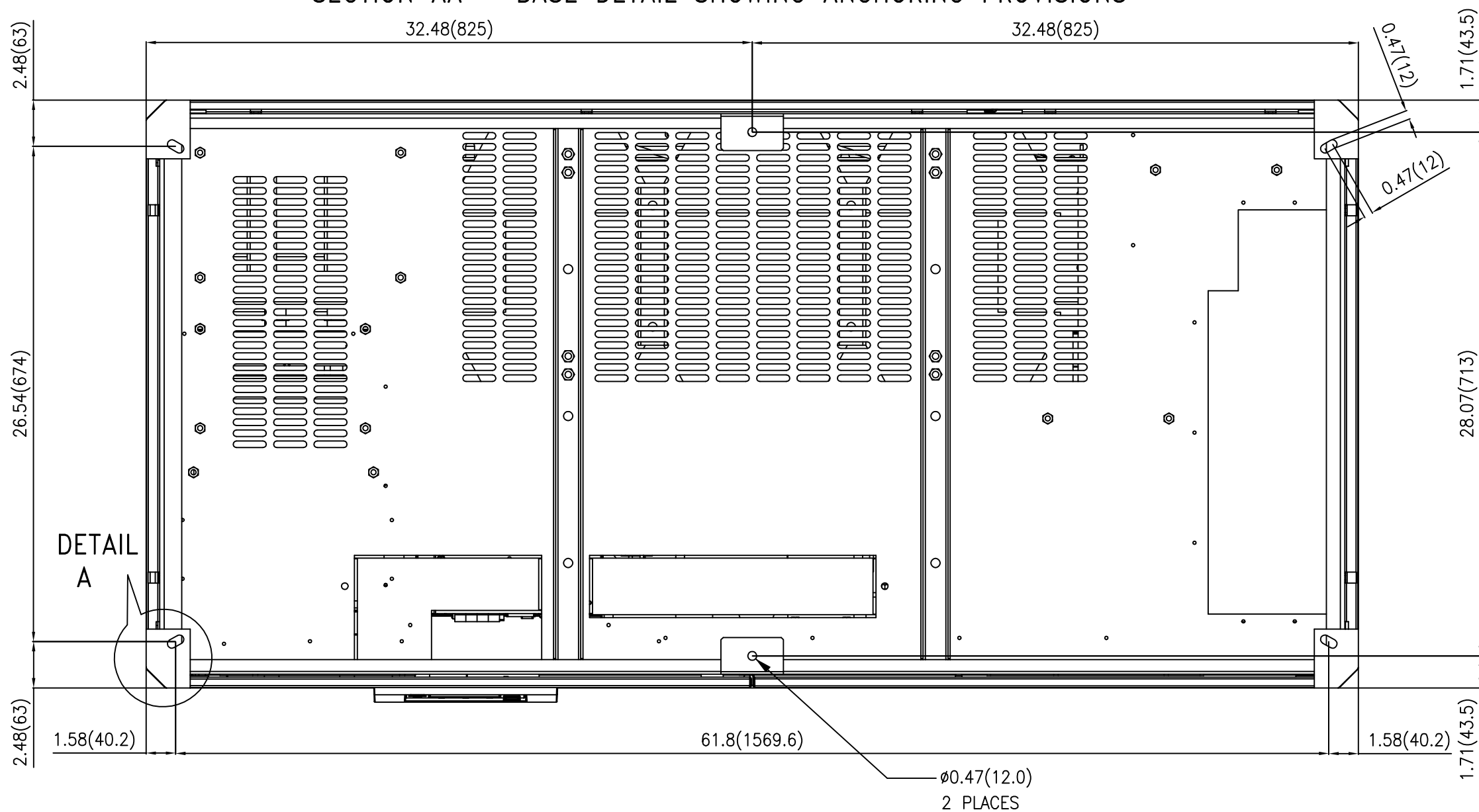
SG Series Uninterruptible Power Supply (UPS)  
225-300kVA UL listed with eBoost™ technology

FIRST MADE FOR: ---

SIZE B	CAGE CODE ---	DWG NO <b>202 00082 01</b>	REV : 1.0
SCALE: -	DWG Date 03/08/2010	SHEET 2 of 3	

All rights for transmission, duplicating or reprinting reserved

SECTION AA - BASE DETAIL SHOWING ANCHORING PROVISIONS



Note: All Dimensions are In Inches (Millimeters)

		GENERAL ELECTRIC COMPANY	
<p>ANCHORING DETAIL</p> <p>SG Series Uninterruptible Power Supply (UPS) 225-300kVA UL listed with eBoost™ technology</p>			
FIRST MADE FOR: ---			
SIZE B	CAGE CODE ---	DWG NO	<b>202 00082 01</b>
SCALE: -	DWG Date	03/08/2010	REV : 1.0
		SHEET	3 of 3

All rights for transmission, duplicating or reprinting reserved