

- NOTE:**
1. Dimensions are in Inches (Millimeters).
  2. UPS Operating Temperature: 32°F–104°F (0–40°C).
  3. 18" (457mm) Minimum clearance required above the unit for heat rejection.
  4. Front access for service and Maintenance.
  5. Do not tilt the UPS more than 10°.
  6. For Section AA details refer to sheet 3.

UPS Options	Weight		Heat Rejection				Floor Loading	
	Lbs	kg	In Double Conversion Mode		In eBoost Mode		lbs/Sq Ft	kg/Sq Mtr
			Btu/Hr	kW	Btu/Hr	kW		
SG400kVA	5,226	2370.5	83031	24.3	14923	4.4	278.3	817.4
SG400kVA + 11 Filter	5,246	2379.5	84012	24.6	14923	4.4	279.4	820.5
SG400kVA + 11th Filter + RPA Inductor	5,356	2429.5	84012	24.6	16382	4.8	285.2	837.8
SG500kVA	5,226	2370.5	105015	30.8	17082	5.0	278.3	817.4
SG500kVA + 11th Filter	5,246	2379.5	106068	31.1	17082	5.0	279.4	820.5
SG500kVA + 11th Filter + RPA Inductor	5,356	2429.5	106068	31.1	18430	5.4	285.2	837.8

**GE Digital Energy**  
 Power Quality  
 GENERAL ELECTRIC COMPANY

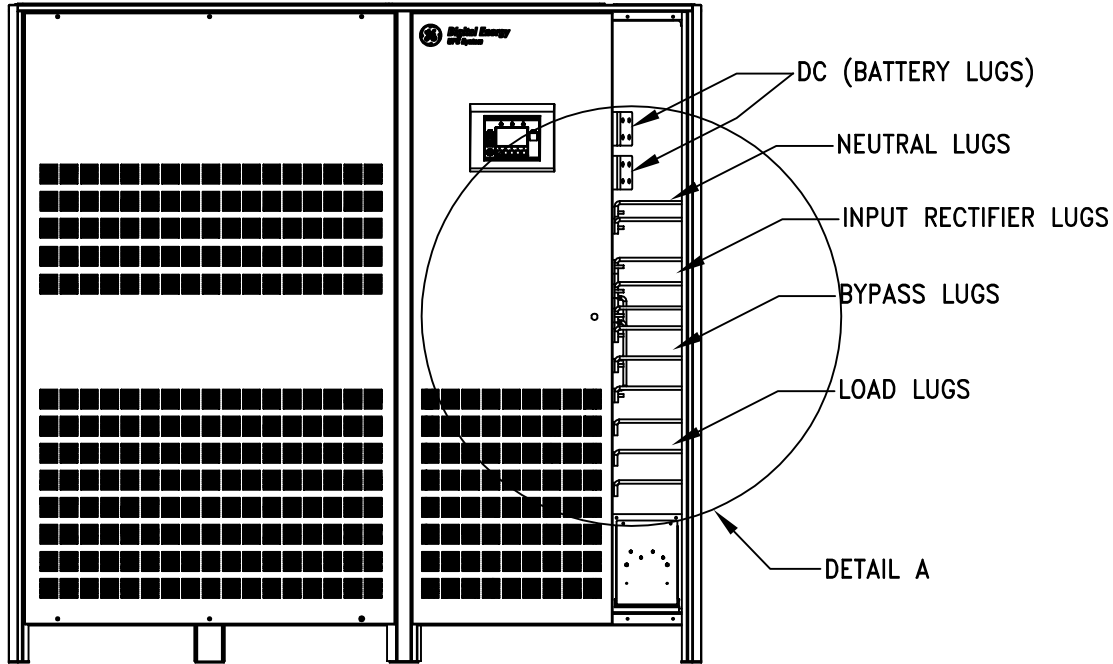
**MECHANICAL OUTLINE**  
 SG Series Uninterruptible Power Supply (UPS)  
 400-500kVA UL listed with eBoost™ technology

FIRST MADE FOR: ---

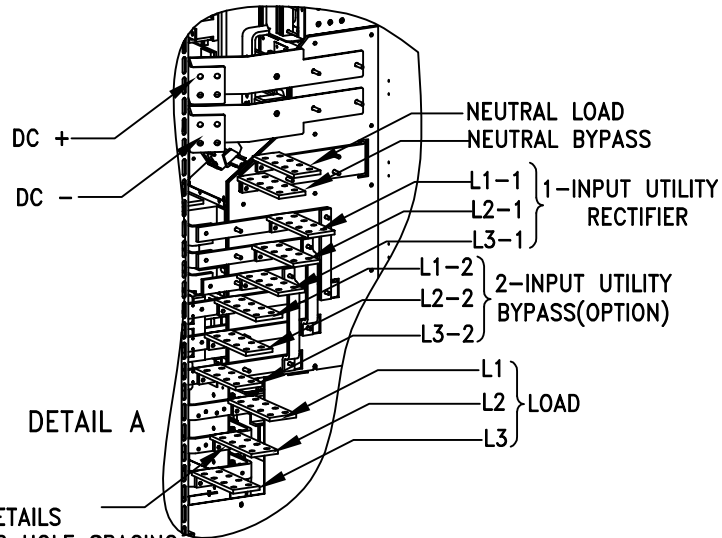
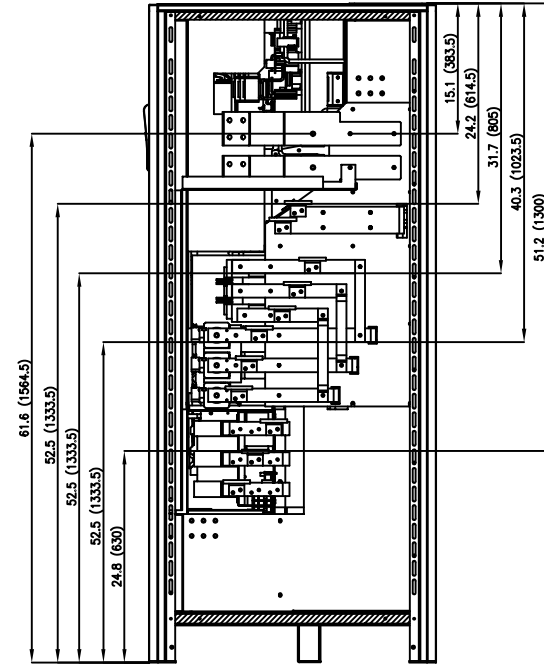
SIZE B	CAGE CODE ---	DWG NO 202 00083 01	REV : 2.0
SCALE: -	DWG Date	16/06/2011	SHEET 1 of 3

All rights for transmission, duplicating or reprinting reserved

FRONT VIEW WITH SAFETY PANEL REMOVED



RIGHT SIDE VIEW WITH PANEL REMOVED



BUS DETAILS  
NEMA 2 HOLE SPACING  
1 3/4" CENTRE TO CENTRE  
1/2" DIA

NOTE:  
1. All Dimensions are in inches (Millimeters)

Maximum Recommended Cable Configuration

kVA	Rectifier Input	Bypass Input	DC Input	Output (Load)	GND
400-500	4x500 kcmil	4x500 kcmil	4x600 kcmil	2x500 kcmil	3x500 kcmil

\* Based on standard wiring practices and available bending space.



GENERAL ELECTRIC COMPANY

TERMINAL LUG DETAIL

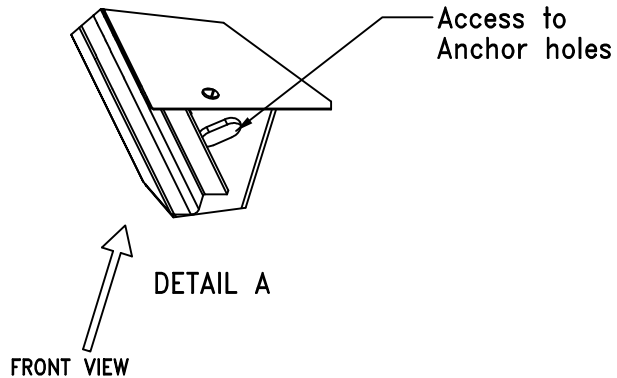
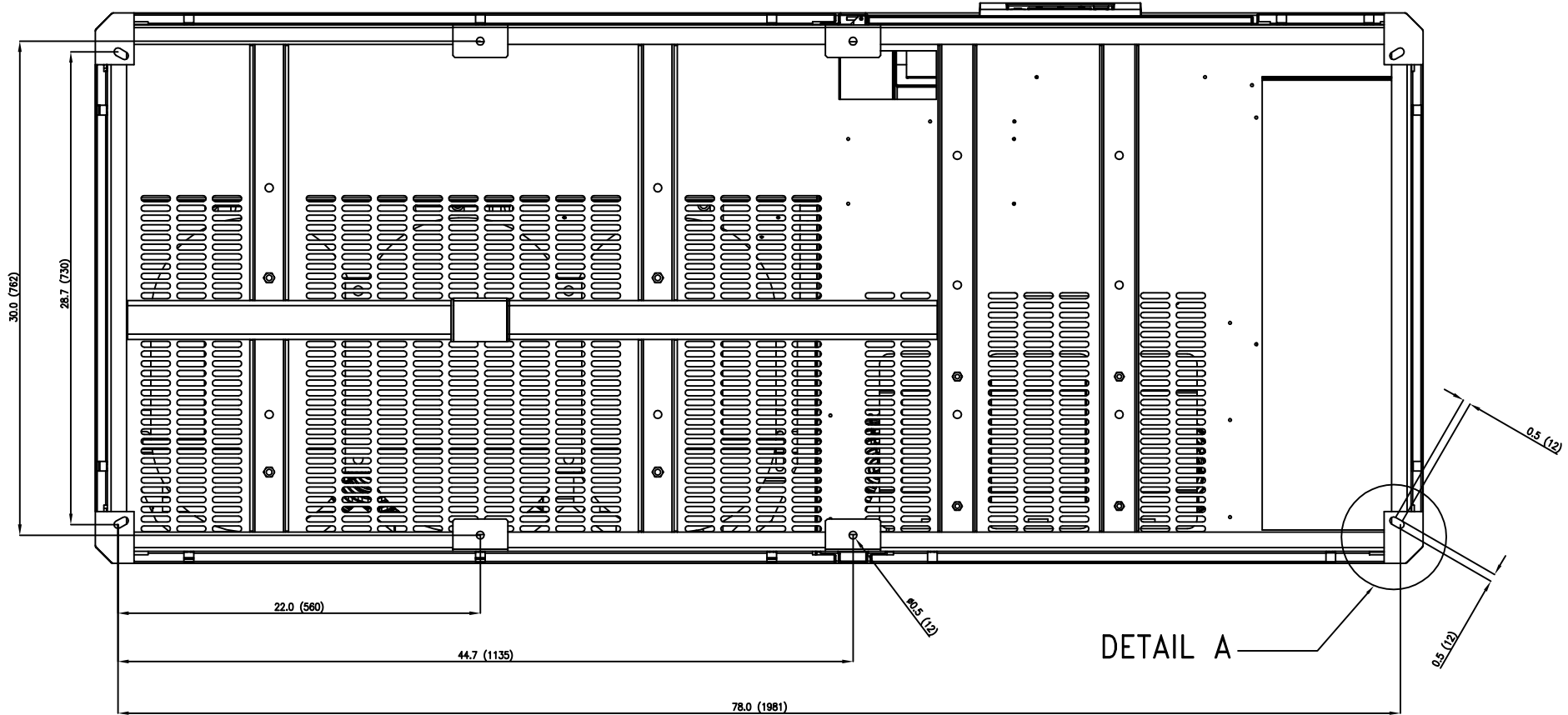
SG Series Uninterruptible Power Supply (UPS)  
400-500kVA UL listed with eBoost™ technology

FIRST MADE FOR: ---

SIZE B	CAGE CODE ---	DWG NO 202 00083 01
SCALE: -	DWG Date 16/06/2011	SHEET 2 of 3
		REV : 2.0

All rights for transmission, duplicating or reprinting reserved

BOTTOM VIEW SHOWING ANCHORING PROVISIONS



Note: All Dimensions are In Inches (Millimeters)



GENERAL ELECTRIC COMPANY

ANCHORING DETAIL

SG Series Uninterruptible Power Supply (UPS)  
400-500kVA UL listed with eBoost™ technology

FIRST MADE FOR: ---

SIZE B	CAGE CODE ---	DWG NO 202 00083 01
SCALE: -	DWG Date 16/06/2011	SHEET 3 of 3 REV : 2.0

All rights for transmission, duplicating or reprinting reserved