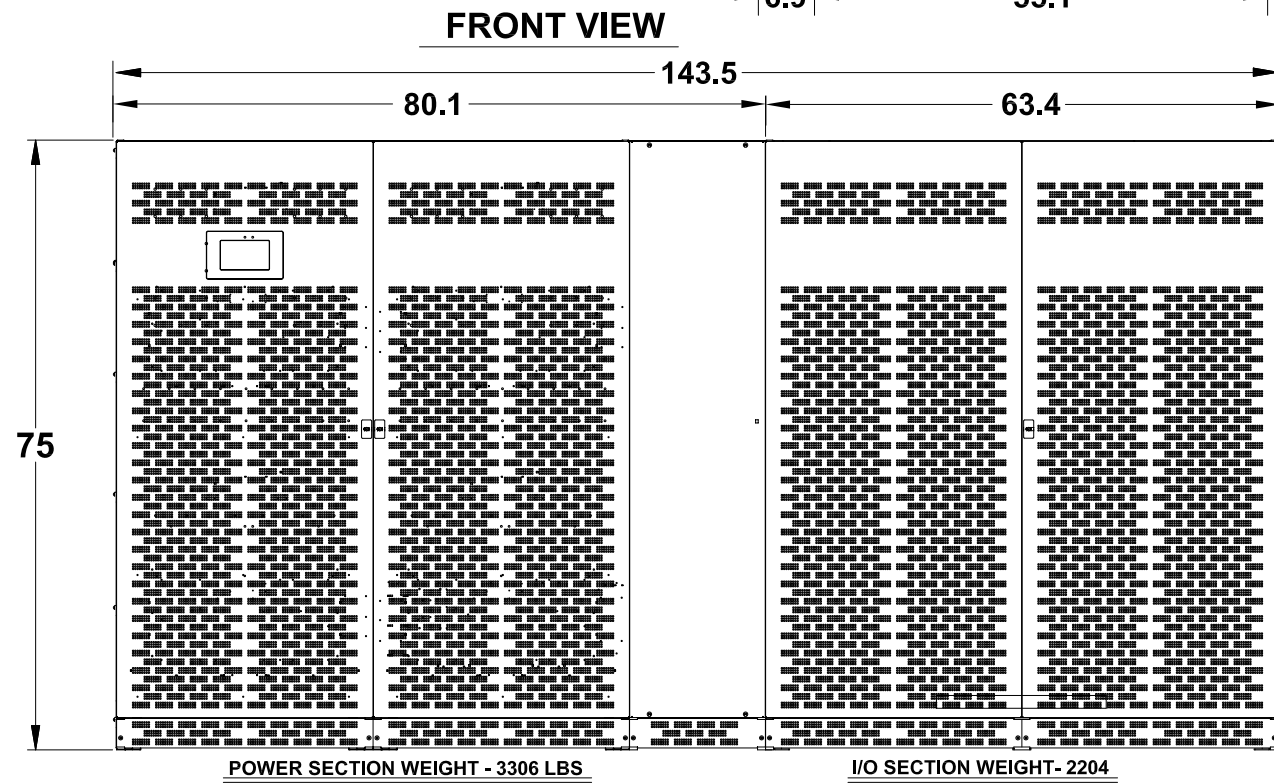
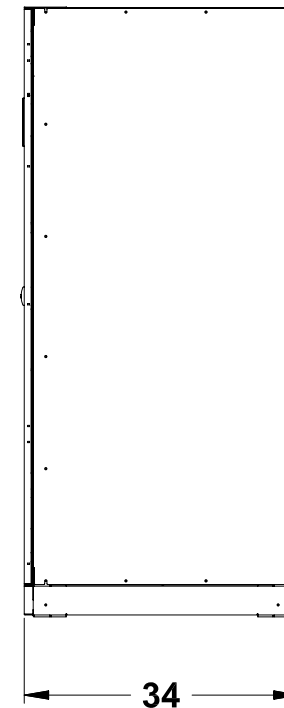


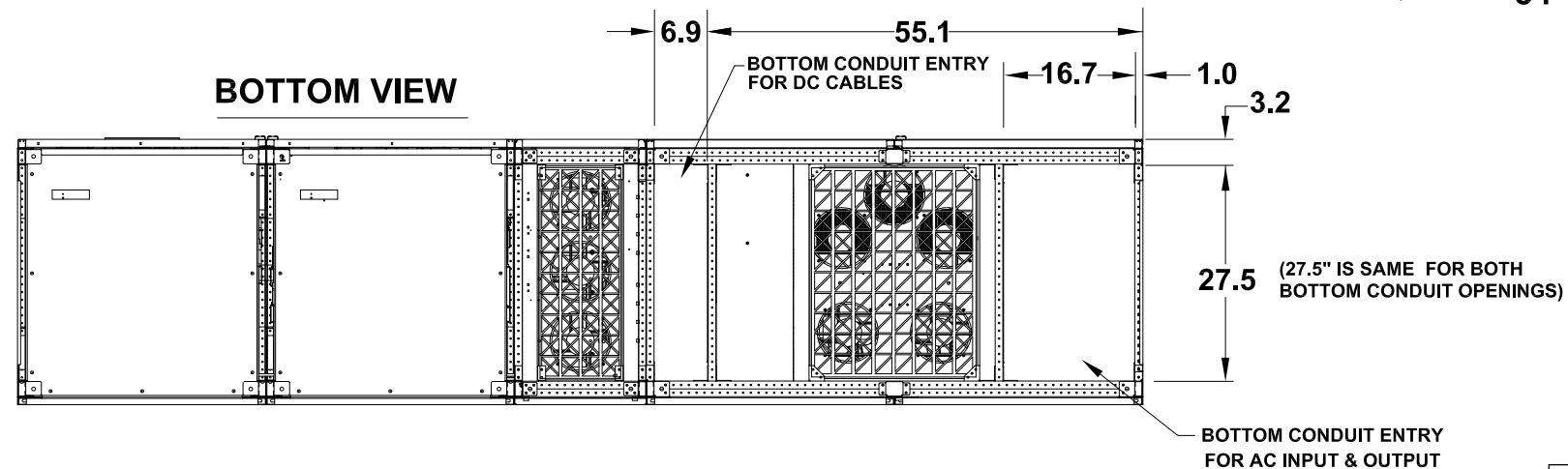
| HEAT REJECTION IN DOUBLE CONVERSION OPERATING MODE AT 1.0pf LOAD, NOMINAL VOLTAGE/FREQUENCY, ENERGY STORAGE DISCONNECTED. | | 100% LOAD | WEIGHT LBS. |
|---------------------------------------------------------------------------------------------------------------------------|--------|-----------|-------------|
| 1000kW | BTU/hr | 134,783 | 5510 |
| | kW | 39.5 | 5510 |
| HEAT REJECTION IN eBOOST OPERATING MODE @ 1.0 pf LOAD, NOMINAL VOLTAGE/FREQUENCY, ENERGY STORAGE DISCONNECTED. | | 100% LOAD | |
| 1000kW | BTU/hr | 37,951 | 5510 |
| | kW | 11.1 | 5510 |



SIDE VIEW



- NOTES:**
1. DIMENSIONS ARE IN INCHES
 2. UPS OPERATING TEMPERATURE 32F-104F
 3. 18" MINIMUM CLEARANCE REQUIRED ABOVE THE UNIT FOR HEAT REJECTION.
 4. FRONT ACCESS FOR SERVICE AND MAINTENANCE
 5. DO NO TILT THE UPS MORE THAN 10°

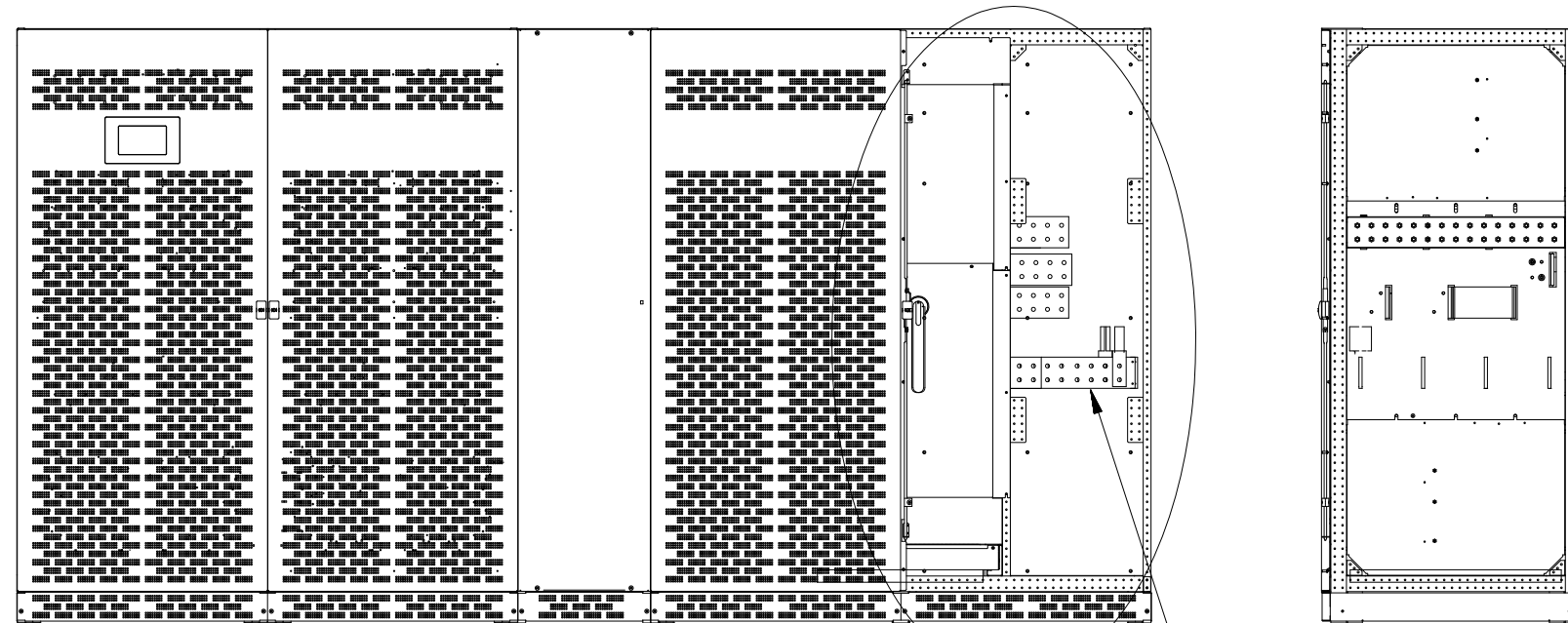


| | | | |
|------------------------------------------------|---------|--------------------------|--------------|
| GE CRITICAL POWER | | GENERAL ELECTRIC COMPANY | |
| MECHANICAL OUTLINE TLE 1000kW | | | |
| SIZE | DRAWING | 2020013001 | DRAWING REL |
| MODEL | DATE | | SHEET 1 OF 2 |
| SIGNATURES | | SCALE: NA | |
| K.P. | | | |
| 3/7/2014 | | | |

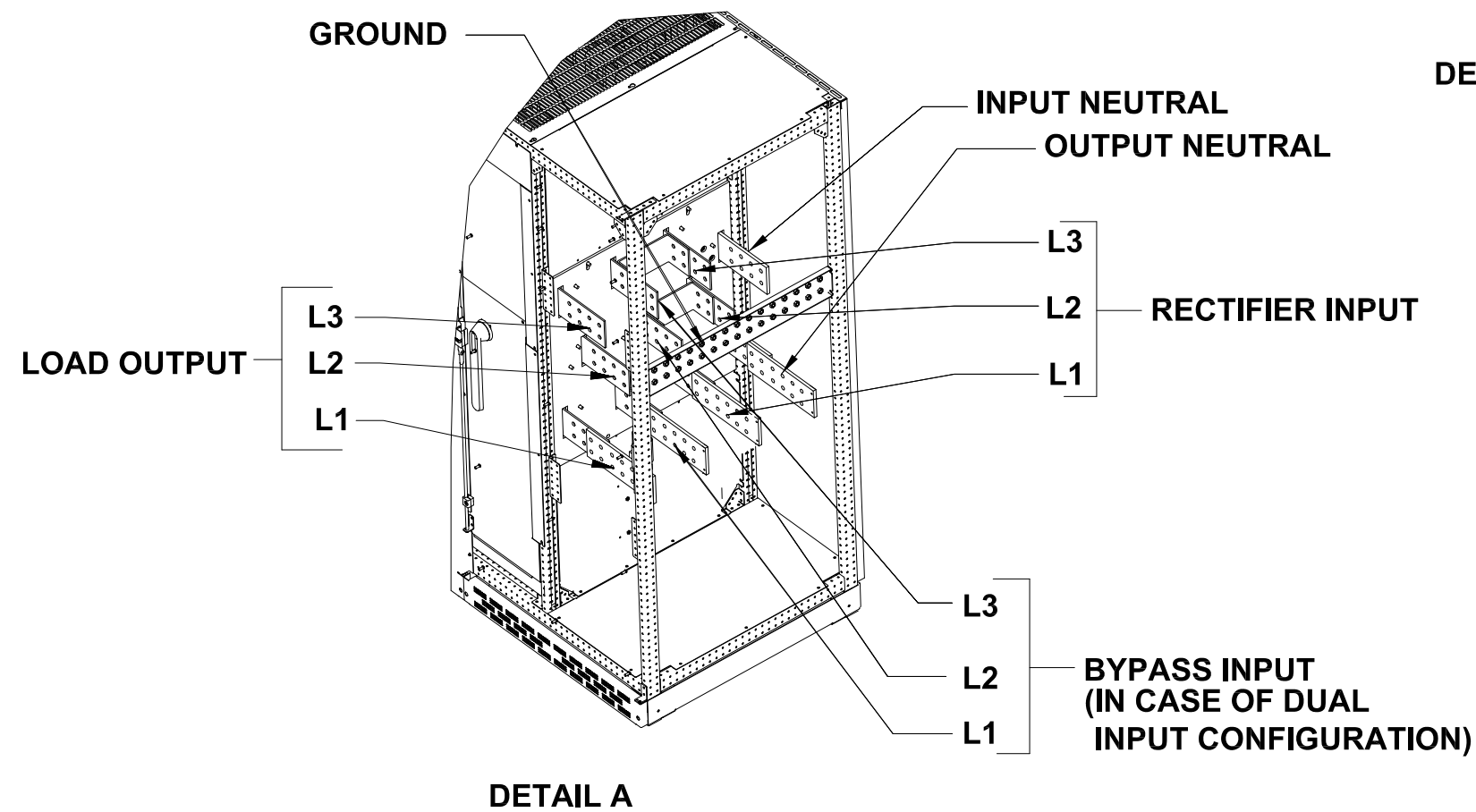
| | |
|------------|----------|
| SIGNATURES | DATE |
| MODEL | K.P. |
| | 3/7/2014 |

FRONT VIEW WITH SAFETY PANEL REMOVED

SIDE VIEW WITH SAFETY PANEL REMOVED




BUS BAR EXTENSIONS ARE MOUNTED ON BOTTOM BARS IN CASE OF TOP CABLE ENTRY & ON TOP BARS IN CASE OF BOTTOM CABLE ENTRY



| Maximum Allowed Cable Configuration | | | | |
|-------------------------------------|-----------------|---------------|---------------|---------------|
| kW | Rectifier Input | Bypass Input | DC Input | Output (Load) |
| 1000 | 6 x 750 kcmil | 6 x 750 kcmil | 8 x 750 kcmil | 6 x 750 kcmil |

* Actual cable size and quantity must be based on the requirements of NFPA 70, and must not exceed the limits listed above.


GE CRITICAL POWER GENERAL ELECTRIC COMPANY
 TITLE: **MECHANICAL OUTLINE**
TLE 1000kW - BUS DETAILS
 SIZE: C DRAWING: **2020013001** DRAWING REL:
 MODEL: K.P. DATE: 3/7/2014
 SCALE: NA SHEET 2 OF 2

| | |
|------------|----------|
| SIGNATURES | DATE |
| MODEL K.P. | 3/7/2014 |