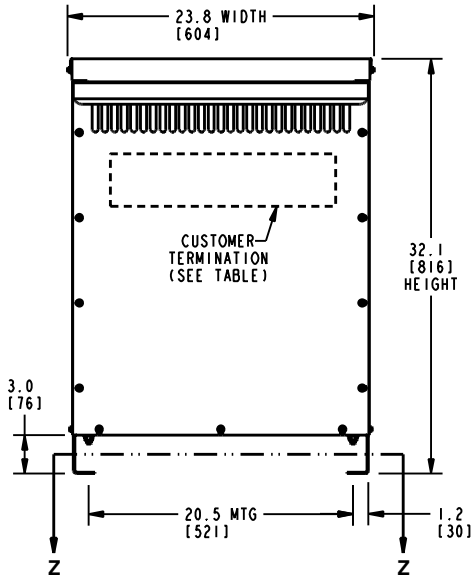
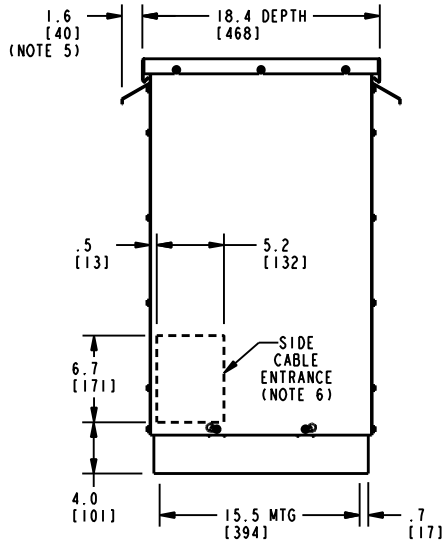


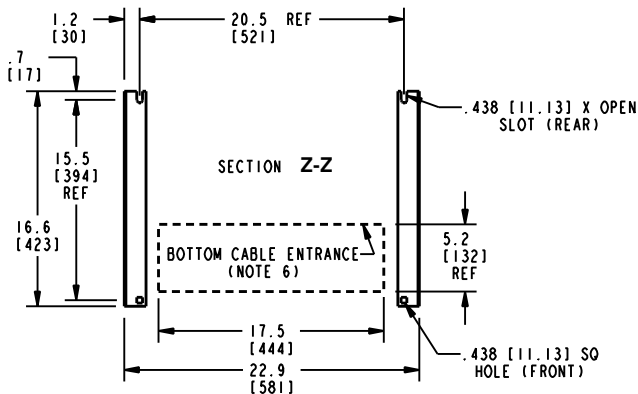
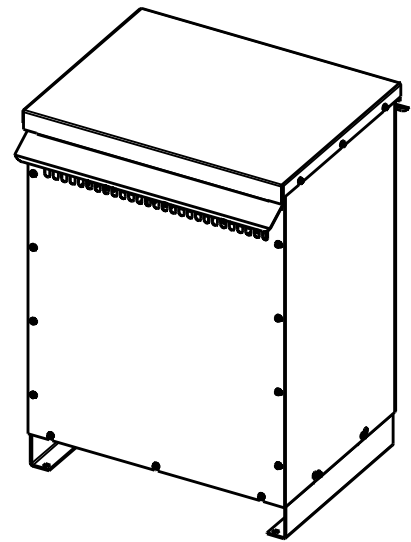
**FRONT VIEW**



**SIDE VIEW**



**ISOMETRIC VIEW**



**BOTTOM VIEW OF MOUNTING AND CABLE ENTRANCE**

| CUSTOMER TERMINATION |                                      |                |               |
|----------------------|--------------------------------------|----------------|---------------|
| LOCATION             | CONNECTION TYPE                      | HOLE SIZE      | HOLE QTY      |
| PRIMARY BUS BARS     | STANDARD BUS BAR (LUGS ARE OPTIONAL) | .41 [10.3] DIA | 1 PER BUS BAR |
| SECONDARY BUS BARS   |                                      |                |               |

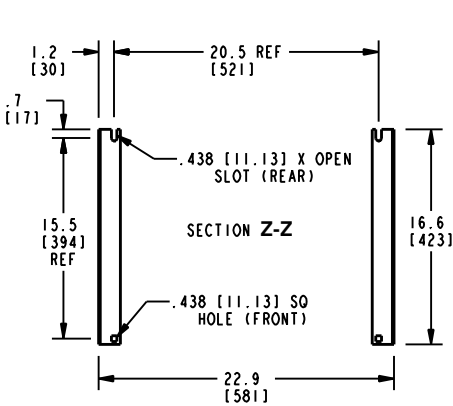
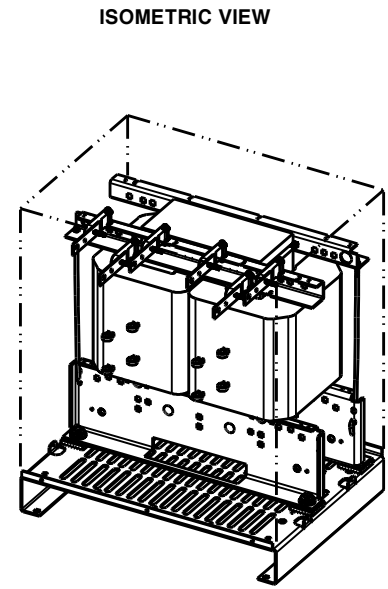
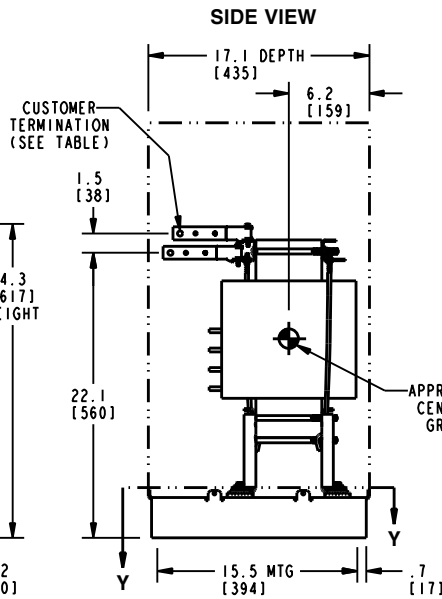
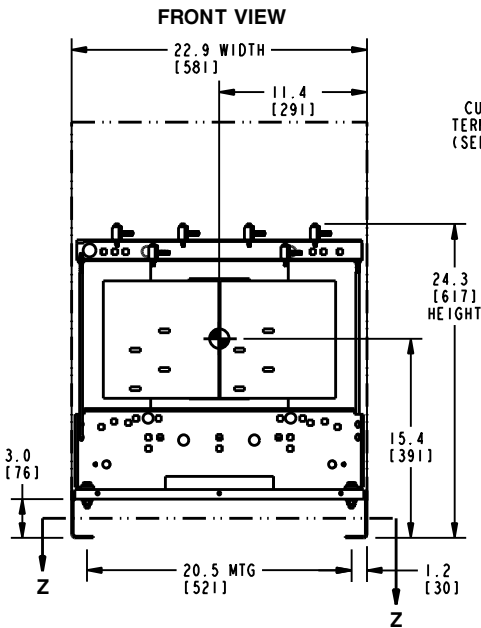
**APPROX TOTAL WEIGHT LBS [KG]**  
 AL WINDINGS: 320 [145]  
 CU WINDINGS: 350 [159]

**kVA RATING:**  
**K-FACTOR:**  
**PRI VOLTAGE:**  
**SEC VOLTAGE:**  
**FREQ (Hz):**  
**TEMP RISE:**  
**WINDING MATL:**  
**ES SHIELD:**  
**SOUND LVL (dB):**

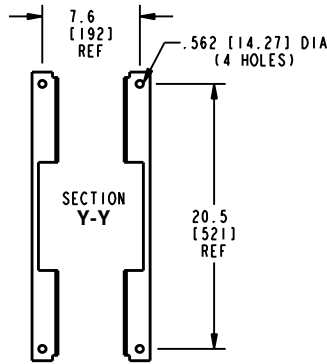
**NOTES:**

- 1) ALL UNITS ARE UL LISTED AND ARE DESIGNED PER NEMA ST-20 STANDARDS.
- 2) THE TEMPERATURE RISE LISTED IS DETERMINED WHEN THE TRANSFORMER IS MOUNTED IN A STANDARD NEMA 2 ENCLOSURE.
- 3) TRANSFORMER IS DESIGNED FOR FLOOR MOUNTING. OPTIONAL WALL MOUNTING BRACKETS ARE AVAILABLE.
- 4) TRANSFORMER IS DRY TYPE, CLASS AA, WITH VENTILATED ENCLOSURE FOR INDOOR USE. OPTIONAL RAINSHIELD KITS ARE AVAILABLE TO ADAPT UNIT FOR TYPE 3R OUTDOOR USE WITHOUT VOIDING THE WARRANTY.
- 5) APPLICABLE WHEN OPTIONAL RAINSHIELDS ARE INSTALLED. RAINSHIELDS ARE SHIPPED IN KITS FOR FIELD INSTALLATION.
- 6) CABLE ENTRANCE IS PERMITTED THROUGH THE LEFT SIDE, RIGHT SIDE AND/OR BOTTOM ENCLOSURE PANELS ONLY. CABLE ENTRANCE IS NOT PERMITTED THROUGH THE FRONT, REAR OR TOP PANELS.
- 7) FOR LIFTING OTHER THAN WITH A FORK TRUCK, REMOVE TOP COVER AND USE 1" [25 MM] DIAMETER HOLES IN THE TOP CORE CLAMPS.
- 8) ENCLOSURE PAINT COLOR IS ANSI #61 GRAY.
- 9) 6" [152 MM] MINIMUM CLEARANCE IS REQUIRED FROM ALL WALLS.

|   |   |                               |
|---|---|-------------------------------|
| <b>JOB NAME:</b><br><br><b>SPEEDI PROP:</b><br><br>electrification.us.abb.com | UNLESS OTHERWISE SPECIFIED ALL DIMENSIONS ARE INCH [MM] | <b>Transformers</b> by ABB    |
|   | THIRD ANGLE PROJECTION<br>                              |                               |
| CAD DRAWING: 303B406AAP071  | SHEET 1 OF 2  | CATALOG # _____ REV <b>11</b> |



BOTTOM VIEW OF MOUNTING HOLE PATTERN



BOTTOM VIEW OF MOUNTING HOLE PATTERN WITHOUT BASE ATTACHED

| CUSTOMER TERMINATION |                                      |                |               |
|----------------------|--------------------------------------|----------------|---------------|
| LOCATION             | CONNECTION TYPE                      | HOLE SIZE      | HOLE QTY      |
| PRIMARY BUS BARS     | STANDARD BUS BAR (LUGS ARE OPTIONAL) | .41 [10.3] DIA | 1 PER BUS BAR |
| SECONDARY BUS BARS   |                                      |                |               |

APPROX TOTAL WEIGHT LBS [KG]  
 AL WINDINGS: 280 [127]  
 CU WINDINGS: 310 [141]

kVA RATING:  
 K-FACTOR:  
 PRI VOLTAGE:  
 SEC VOLTAGE:  
 FREQ (Hz):  
 TEMP RISE:  
 WINDING MATL:  
 ES SHIELD:  
 SOUND LVL (dB):

NOTES:

- 1) ALL UNITS ARE UL LISTED AND ARE DESIGNED PER NEMA ST-20 STANDARDS.
- 2) THE TEMPERATURE RISE LISTED IS DETERMINED WHEN THE TRANSFORMER IS MOUNTED IN A STANDARD NEMA 2 ENCLOSURE.
- 3) TRANSFORMER IS DRY TYPE, CLASS AA FOR INDOOR USE.
- 4) FOR LIFTING OTHER THAN WITH A FORK TRUCK, USE 1" [25 MM] DIAMETER HOLES IN THE TOP CORE CLAMPS.
- 5) BASE PAINT COLOR IS ANSI #61 GRAY.
- 6) 6" [152 MM] MINIMUM CLEARANCE IS REQUIRED FROM ALL WALLS.

|                            |  |                               |
|----------------------------|--|-------------------------------|
| JOB NAME:<br>SPEEDI PROP:  | UNLESS OTHERWISE SPECIFIED ALL DIMENSIONS ARE INCH [MM]  | <b>Transformers</b><br>by ABB |
|                            | THIRD ANGLE PROJECTION   |                               |
| electrification.us.abb.com | <b>DRY TYPE TRANSFORMER OUTLINE DRAWING</b><br><b>TYPE QL, 1-PHASE, DOE 2016 EFFICIENCY</b><br><b>(CORE &amp; COIL UNIT)</b> |                               |
| CAD DRAWING: 303B406AAP071 | SHEET 2 OF 2   | CATALOG # _____ REV <b>11</b> |