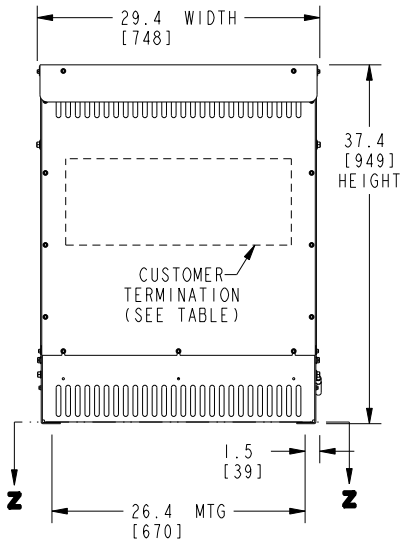
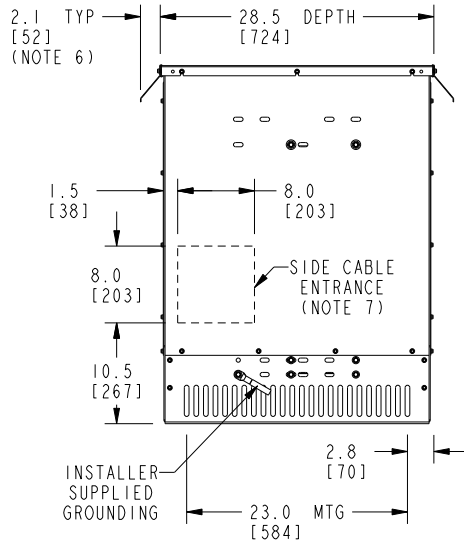


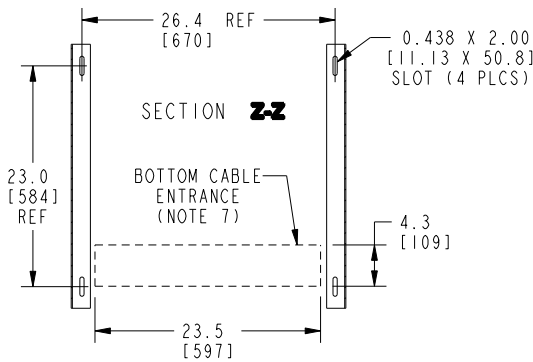
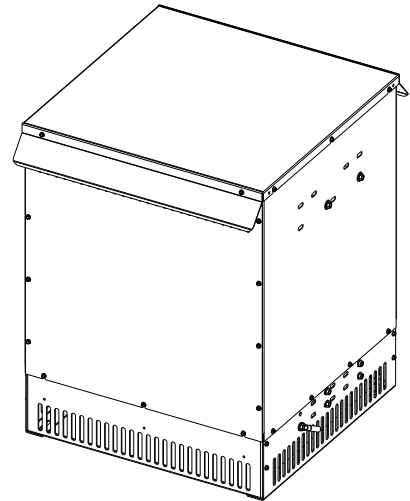
FRONT VIEW



SIDE VIEW



ISOMETRIC VIEW



BOTTOM VIEW OF MOUNTING AND CABLE ENTRANCE

CUSTOMER TERMINATION			
LOCATION	CONNECTION TYPE	HOLE SIZE #1	HOLE SIZE #2
PRIMARY DISCONNECT SWITCH	TCAL43 LUGS (2 HOLES EACH LUG)	.92 [23.4] DIA (1 HOLE) 2/0 - 600 MCM	.61 [15.5] DIA (1 HOLE) #6 - 250 MCM
SECONDARY BUS BARS	BUS BARS (4 HOLES EACH BAR)	.56 [14.2] DIA (4 HOLES)	N/A

APPROX TOTAL WEIGHT LBS [KG]
AL WINDINGS: 850 [386]
CU WINDINGS: 980 [445]

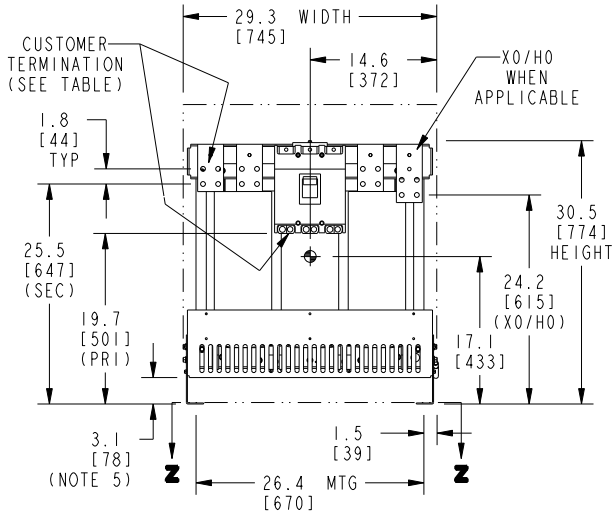
kVA RATING:
K-FACTOR:
PRI VOLTAGE:
SEC VOLTAGE:
FREQ (Hz):
TEMP RISE:
WINDING MATL:
ES SHIELD:
SOUND LVL (dB):

NOTES:

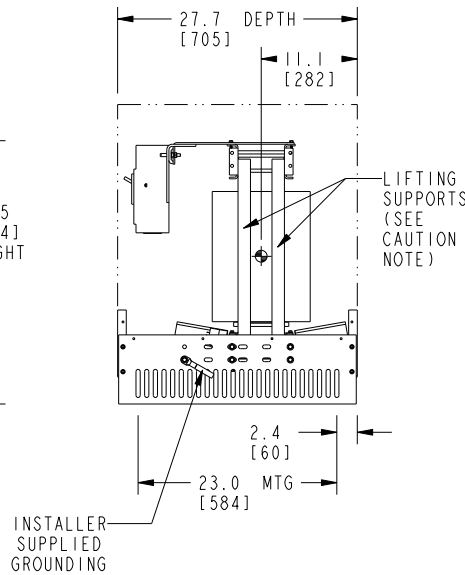
- 1) NEMA AFA DRY TYPE TRANSFORMER. COMPLIES WITH APPLICABLE NEMA STANDARDS AND IEEE C57.12.01; UL LISTED 1561.
- 2) THERMAL SWITCHES ACTIVATE AT: 125° C (FANS), 180° C (ALARM), 200° C (DISCONNECT).
- 3) THE TEMPERATURE RISE LISTED IS DETERMINED WHEN THE TRANSFORMER IS MOUNTED IN A STANDARD ENCLOSURE.
- 4) TRANSFORMER IS DESIGNED FOR FLOOR MOUNTING. OPTIONAL WALL MOUNTING BRACKETS ARE NOT AVAILABLE FOR THIS DESIGN/STYLE.
- 5) TRANSFORMER IS DRY TYPE, CLASS AA, WITH VENTILATED ENCLOSURE FOR INDOOR USE. OPTIONAL RAINSHIELD KITS ARE AVAILABLE TO ADAPT UNIT FOR TYPE 3R OUTDOOR USE WITHOUT VOIDING THE WARRANTY.
- 6) APPLICABLE WHEN OPTIONAL RAINSHIELDS ARE INSTALLED. RAINSHIELDS ARE SHIPPED IN KITS FOR FIELD INSTALLATION.
- 7) CABLE ENTRANCE IS PERMITTED THROUGH THE LEFT SIDE, RIGHT SIDE AND/OR BOTTOM ENCLOSURE PANELS ONLY. CABLE ENTRANCE IS NOT PERMITTED THROUGH THE FRONT, REAR OR TOP PANELS.
- 8) WHEN MOVING WITH A PALLET JACK OR FORK TRUCK, INSERT FORKS COMPLETELY UNDERNEATH BOTH FRONT AND REAR LIFTING GRILLS. FOR CRANE LIFTING, USE 1" [25 MM] DIAMETER HOLES IN THE TOP CORE CLAMPS.
- 9) ENCLOSURE PAINT COLOR IS ANSI #61 GRAY.
- 10) 6" [152 MM] MINIMUM CLEARANCE IS REQUIRED FROM ALL WALLS.

JOB NAME: SPEEDI PROP:	UNLESS OTHERWISE SPECIFIED ALL DIMENSIONS ARE INCH [MM]	<p>GE Energy</p>	<p>DRY TYPE TRANSFORMER OUTLINE DRAWING TYPE TRANSFORMORE, 3-PHASE (ENCLOSED UNIT)</p>
	<p>THIRD ANGLE PROJECTION</p>		
CAD DRAWING: 303B899AAP077	SHEET 1 OF 3		REV 15

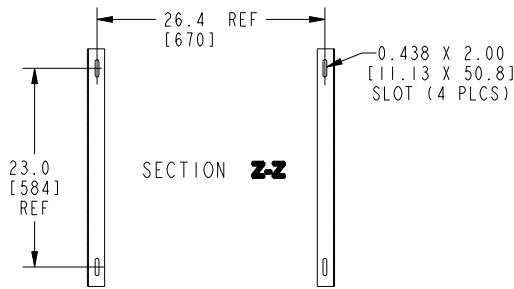
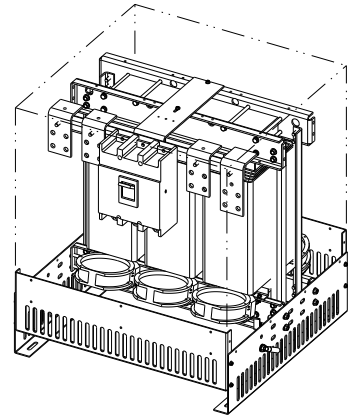
FRONT VIEW



SIDE VIEW



ISOMETRIC VIEW



SECTION Z-Z
BOTTOM VIEW OF MOUNTING

CAUTION:

THE TEMPORARY LIFTING SUPPORTS (PAINTED YELLOW) MUST REMAIN ATTACHED TO THE TRANSFORMER UNTIL THE TRANSFORMER IS INSTALLED INTO ITS FINAL POSITION.

THE SUPPORTS MUST THEN BE REMOVED PRIOR TO ENERGIZING THE TRANSFORMER.

CUSTOMER TERMINATION			
LOCATION	CONNECTION TYPE	HOLE SIZE #1	HOLE SIZE #2
PRIMARY DISCONNECT SWITCH	TCAL43 LUGS (2 HOLES EACH LUG)	.92 [23.4] DIA (1 HOLE) 2/0 - 600 MCM	.61 [15.5] DIA (1 HOLE) #6 - 250 MCM
SECONDARY BUS BARS	BUS BARS (4 HOLES EACH BAR)	.56 [14.2] DIA (4 HOLES)	N/A

APPROX TOTAL WEIGHT LBS [KG]

AL WINDINGS: 770 [350]
CU WINDINGS: 900 [408]

kVA RATING:

K-FACTOR:

PRI VOLTAGE:

SEC VOLTAGE:

FREQ (Hz):

TEMP RISE:

WINDING MATL:

ES SHIELD:

SOUND LVL (dB):

NOTES:

- 1) NEMA AFA DRY TYPE TRANSFORMER. COMPLIES WITH APPLICABLE NEMA STANDARDS AND IEEE C57.12.01; UL LISTED 1561.
- 2) THERMAL SWITCHES ACTIVATE AT: 125° C (FANS), 180° C (ALARM), 200° C (DISCONNECT).
- 3) THE TEMPERATURE RISE LISTED IS DETERMINED WHEN THE TRANSFORMER IS MOUNTED IN A STANDARD ENCLOSURE.
- 4) TRANSFORMER IS DRY TYPE, CLASS AA FOR INDOOR USE.
- 5) WHEN MOVING WITH A PALLET JACK OR FORK TRUCK, INSERT FORKS COMPLETELY UNDERNEATH BOTH FRONT AND REAR LIFTING GRILLS. FOR CRANE LIFTING, USE 1" [25 MM] DIAMETER HOLES IN THE TOP CORE CLAMPS.
- 6) PAINTED GRILL AND MTG BRACKET COLOR IS ANSI #61 GRAY.
- 7) 6" [152 MM] MINIMUM CLEARANCE IS REQUIRED FROM ALL WALLS.
- 8) ⌀ INDICATES APPROXIMATE CENTER OF GRAVITY.

JOB NAME:

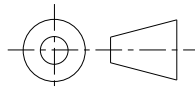
SPEEDI PROP:

UNLESS OTHERWISE SPECIFIED
ALL DIMENSIONS ARE INCH [MM]



GE Energy

THIRD ANGLE PROJECTION



DRY TYPE TRANSFORMER OUTLINE DRAWING
TYPE TRANSFORMER, 3-PHASE
(CORE & COIL UNIT WITH MOUNTING BRACKETS)

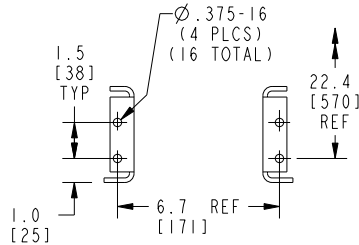
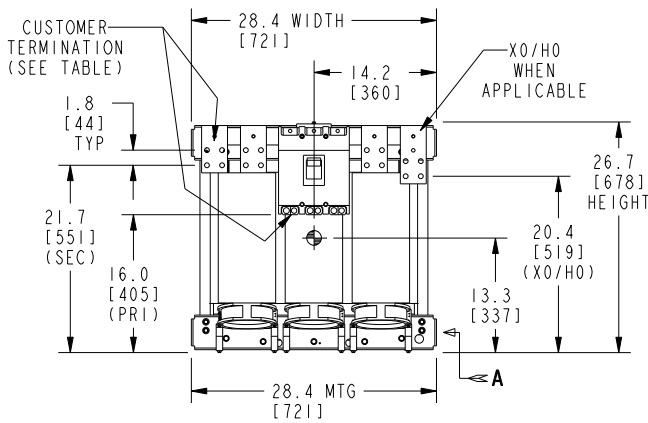
CAD DRAWING: 303B899AAP077

SHEET 2 OF 3

CATALOG #

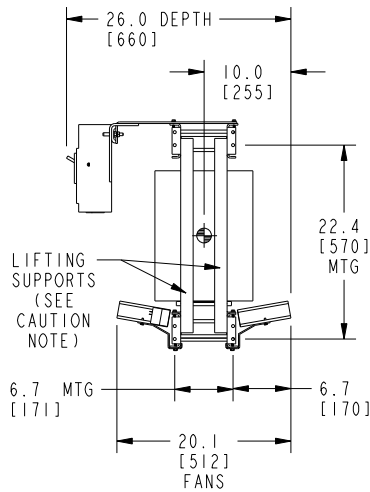
REV 15

FRONT VIEW

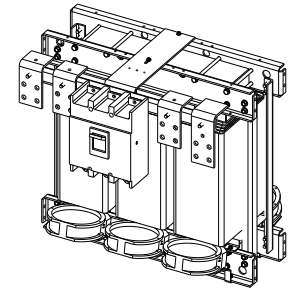


ENLARGED VIEW IN DIRECTION OF ARROW "A"
TYPICAL MOUNTING DETAILS (4 PLACES)

SIDE VIEW



ISOMETRIC VIEW



CAUTION:

THE TEMPORARY LIFTING SUPPORTS (PAINTED YELLOW) MUST REMAIN ATTACHED TO THE TRANSFORMER UNTIL THE TRANSFORMER IS INSTALLED INTO ITS FINAL POSITION.

THE SUPPORTS MUST THEN BE REMOVED PRIOR TO ENERGIZING THE TRANSFORMER.

APPROX TOTAL WEIGHT LBS [KG]

AL WINDINGS: 740 [336]
CU WINDINGS: 870 [395]

kVA RATING:
K-FACTOR:
PRI VOLTAGE:
SEC VOLTAGE:
FREQ (Hz):
TEMP RISE:
WINDING MATL:
ES SHIELD:
SOUND LVL (dB):

CUSTOMER TERMINATION			
LOCATION	CONNECTION TYPE	HOLE SIZE #1	HOLE SIZE #2
PRIMARY DISCONNECT SWITCH	TCAL43 LUGS (2 HOLES EACH LUG)	.92 [23.4] DIA (1 HOLE) 2/0 - 600 MCM	.61 [15.5] DIA (1 HOLE) #6 - 250 MCM
SECONDARY BUS BARS	BUS BARS (4 HOLES EACH BAR)	.56 [14.2] DIA (4 HOLES)	N/A

NOTES:

- 1) NEMA AFA DRY TYPE TRANSFORMER. COMPLIES WITH APPLICABLE NEMA STANDARDS AND IEEE C57.12.01; UL LISTED 1561.
- 2) THERMAL SWITCHES ACTIVATE AT: 125° C (FANS), 180° C (ALARM), 200° C (DISCONNECT).
- 3) THE TEMPERATURE RISE LISTED IS DETERMINED WHEN THE TRANSFORMER IS MOUNTED IN A STANDARD ENCLOSURE.
- 4) TRANSFORMER IS DRY TYPE, CLASS AA FOR INDOOR USE.
- 5) WHEN MOVING WITH A PALLET JACK OR FORK TRUCK, INSERT FORKS COMPLETELY UNDERNEATH BOTH FRONT AND REAR CORE CLAMPS. FOR CRANE LIFTING, USE 1" [25 MM] DIAMETER HOLES IN THE TOP CORE CLAMPS.
- 6) 6" [152 MM] MINIMUM CLEARANCE IS REQUIRED FROM ALL WALLS.
- 7) Ⓞ INDICATES APPROXIMATE CENTER OF GRAVITY.

JOB NAME: SPEEDI PROP:	UNLESS OTHERWISE SPECIFIED ALL DIMENSIONS ARE INCH [MM]		GE Energy DRY TYPE TRANSFORMER OUTLINE DRAWING TYPE TRANSFORMER, 3-PHASE (CORE & COIL UNIT WITHOUT MOUNTING BRACKETS)
	THIRD ANGLE PROJECTION 		
CAD DRAWING: 303B899AAP077	SHEET 3 OF 3		