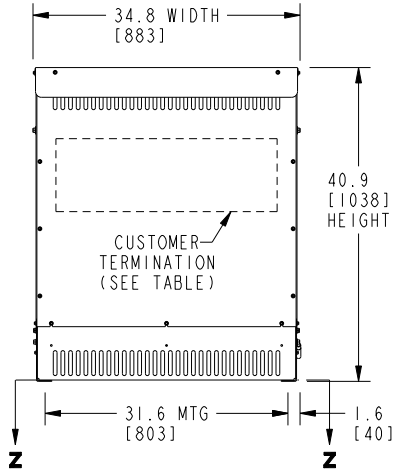
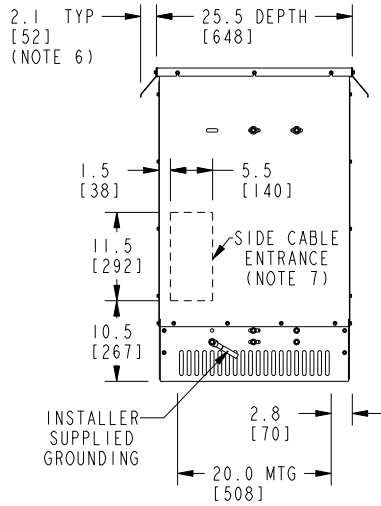


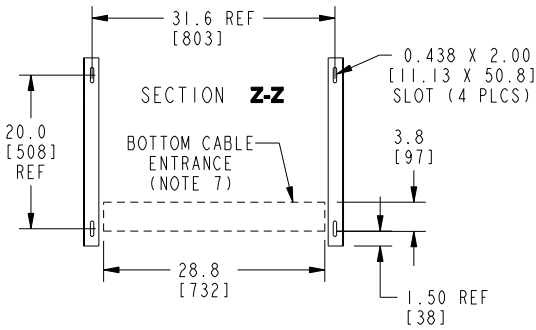
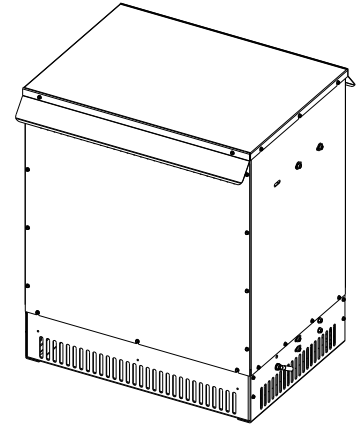
**FRONT VIEW**



**SIDE VIEW**



**ISOMETRIC VIEW**



**BOTTOM VIEW OF MOUNTING HOLE PATTERN**

CUSTOMER TERMINATION		
LOCATION	CONNECTION TYPE	HOLE SIZE
PRIMARY DISCONNECT SWITCH	TCAL63 LUGS (2 HOLES EACH LUG)	.84 DIA (2 HOLES) 3/0 - 500 MCM
SECONDARY BUS BARS	BUS BARS (4 HOLES EACH BAR)	.56 DIA (4 HOLES)

**NOTES:**

- 1) NEMA AFA DRY TYPE TRANSFORMER. COMPLIES WITH APPLICABLE NEMA STANDARDS AND IEEE C57.12.01; UL LISTED 1561.
- 2) THERMAL SWITCHES ACTIVATE AT: 125° C (FANS), 180° C (ALARM), 200° C (DISCONNECT).
- 3) THE TEMPERATURE RISE LISTED IS DETERMINED WHEN THE TRANSFORMER IS MOUNTED IN A STANDARD NEMA 2 ENCLOSURE.
- 4) TRANSFORMER IS DESIGNED FOR FLOOR MOUNTING. OPTIONAL WALL MOUNTING BRACKETS ARE NOT AVAILABLE FOR THIS DESIGN/STYLE.
- 5) TRANSFORMER IS DRY TYPE, CLASS AA, WITH VENTILATED ENCLOSURE FOR INDOOR USE. OPTIONAL RAINSHIELD KITS ARE AVAILABLE TO ADAPT UNIT FOR TYPE 3R OUTDOOR USE WITHOUT VOIDING THE WARRANTY.
- 6) APPLICABLE WHEN OPTIONAL RAINSHIELDS ARE INSTALLED. RAINSHIELDS ARE SHIPPED IN KITS FOR FIELD INSTALLATION.
- 7) CABLE ENTRANCE IS PERMITTED THROUGH THE LEFT SIDE, RIGHT SIDE AND/OR BOTTOM ENCLOSURE PANELS ONLY. CABLE ENTRANCE IS NOT PERMITTED THROUGH THE FRONT, REAR OR TOP PANELS.
- 8) WHEN MOVING WITH A PALLET JACK OR FORK TRUCK, INSERT FORKS COMPLETELY UNDERNEATH BOTH FRONT AND REAR LIFTING GRILLS. FOR CRANE LIFTING, USE 1" [25 MM] DIAMETER HOLES IN THE TOP CORE CLAMPS.
- 9) ENCLOSURE PAINT COLOR IS ANSI #61 GRAY.
- 10) 6" [152 MM] MINIMUM CLEARANCE IS REQUIRED FROM ALL WALLS.

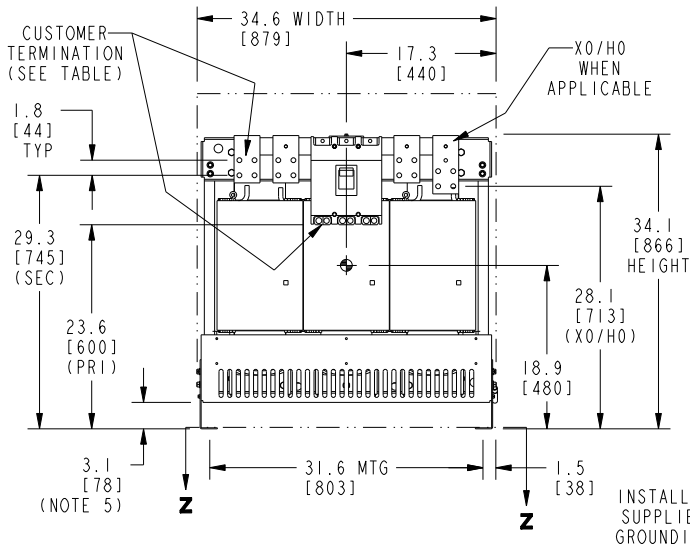
**APPROX TOTAL WEIGHT LBS [KG]**

AL WINDINGS: 1020 [463]  
 CU WINDINGS: 1160 [526]

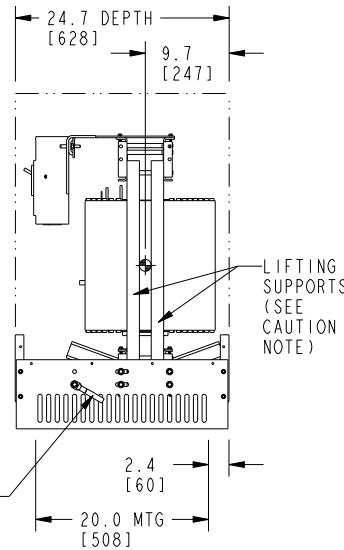
kVA RATING:  
 K-FACTOR:  
 PRI VOLTAGE:  
 SEC VOLTAGE:  
 FREQ (Hz):  
 TEMP RISE:  
 WINDING MATL:  
 ES SHIELD:  
 SOUND LVL (dB):

JOB NAME: SPEEDI PROP:	UNLESS OTHERWISE SPECIFIED ALL DIMENSIONS ARE INCH [MM]		<b>GE Energy</b>  <b>DRY TYPE TRANSFORMER OUTLINE DRAWING</b> <b>TYPE TRANSFORMORE, 3-PHASE</b> <b>(ENCLOSED UNIT)</b>
	THIRD ANGLE PROJECTION 		
CAD DRAWING: 303B899AAP078	SHEET 1 OF 3		

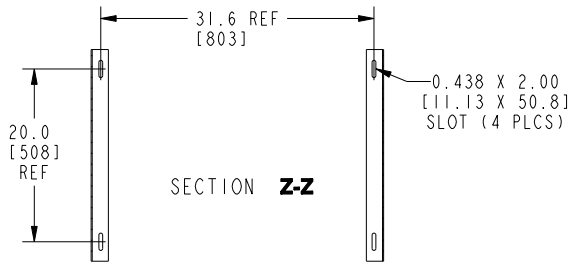
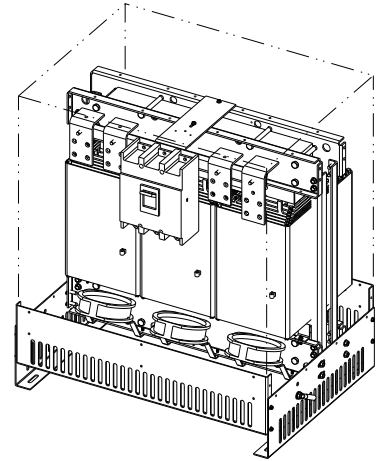
**FRONT VIEW**



**SIDE VIEW**



**ISOMETRIC VIEW**



**SECTION Z-Z**  
**BOTTOM VIEW OF MOUNTING**

**CAUTION:**

**THE TEMPORARY LIFTING SUPPORTS (PAINTED YELLOW) MUST REMAIN ATTACHED TO THE TRANSFORMER UNTIL THE TRANSFORMER IS INSTALLED INTO ITS FINAL POSITION.**

**THE SUPPORTS MUST THEN BE REMOVED PRIOR TO ENERGIZING THE TRANSFORMER.**

**CUSTOMER TERMINATION**

LOCATION	CONNECTION TYPE	HOLE SIZE
PRIMARY DISCONNECT SWITCH	TCAL63 LUGS (2 HOLES EACH LUG)	.84 DIA (2 HOLES) 3/0 - 500 MCM
SECONDARY BUS BARS	BUS BARS (4 HOLES EACH BAR)	.56 DIA (4 HOLES)

**APPROX TOTAL WEIGHT LBS [KG]**

**AL WINDINGS: 930 [422]**  
**CU WINDINGS: 1070 [485]**

**kVA RATING:**

**K-FACTOR:**

**PRI VOLTAGE:**

**SEC VOLTAGE:**

**FREQ (Hz):**

**TEMP RISE:**

**WINDING MATL:**

**ES SHIELD:**

**SOUND LVL (dB):**

**NOTES:**

- 1) NEMA AFA DRY TYPE TRANSFORMER. COMPLIES WITH APPLICABLE NEMA STANDARDS AND IEEE C57.12.01; UL LISTED 1561.
- 2) THERMAL SWITCHES ACTIVATE AT: 125° C (FANS), 180° C (ALARM), 200° C (DISCONNECT).
- 3) THE TEMPERATURE RISE LISTED IS DETERMINED WHEN THE TRANSFORMER IS MOUNTED IN A STANDARD NEMA 2 ENCLOSURE.
- 4) TRANSFORMER IS DRY TYPE, CLASS AA FOR INDOOR USE.
- 5) WHEN MOVING WITH A PALLET JACK OR FORK TRUCK, INSERT FORKS COMPLETELY UNDERNEATH BOTH FRONT AND REAR LIFTING GRILLS. FOR CRANE LIFTING, USE 1" [25 MM] DIAMETER HOLES IN THE TOP CORE CLAMPS.
- 6) PAINTED GRILL AND MTG BRACKET COLOR IS ANSI #61 GRAY.
- 7) 6" [152 MM] MINIMUM CLEARANCE IS REQUIRED FROM ALL WALLS.
- 8) Ⓞ INDICATES APPROXIMATE CENTER OF GRAVITY.

**JOB NAME:**

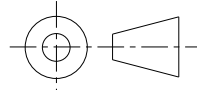
**SPEEDI PROP:**

UNLESS OTHERWISE SPECIFIED  
ALL DIMENSIONS ARE INCH [MM]



**GE Energy**

THIRD ANGLE PROJECTION



**DRY TYPE TRANSFORMER OUTLINE DRAWING**  
**TYPE TRANSFORMER, 3-PHASE**  
**(CORE & COIL UNIT WITH MOUNTING BRACKETS)**

**CAD DRAWING: 303B899AAP078**

**SHEET 2 OF 3**

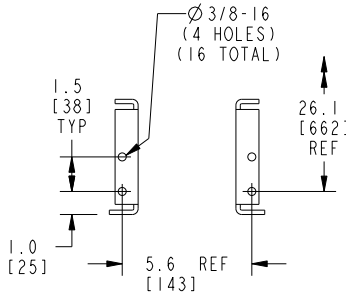
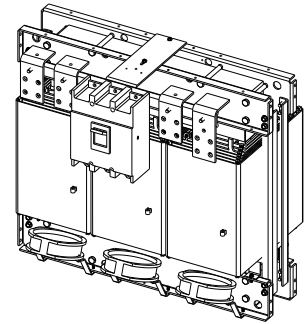
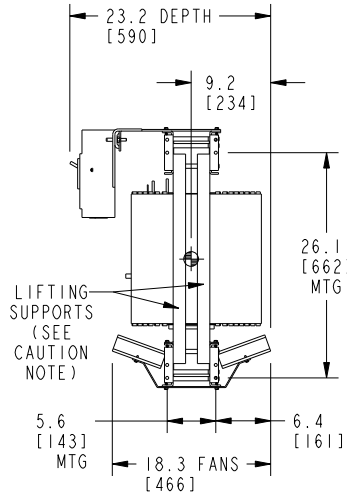
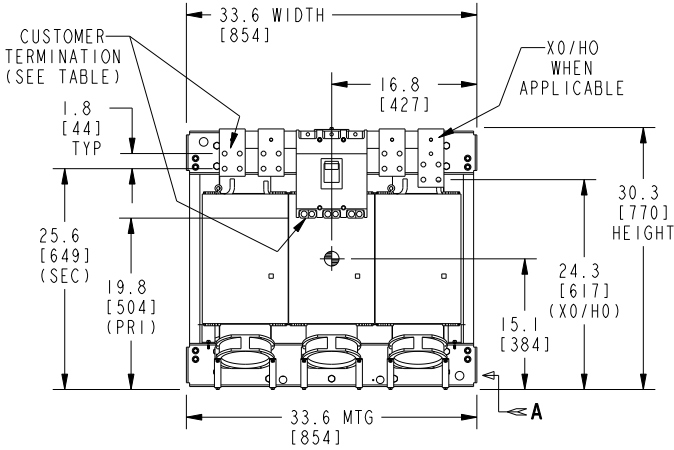
**CATALOG #**

**REV 16**

**FRONT VIEW**

**SIDE VIEW**

**ISOMETRIC VIEW**



**ENLARGED VIEW IN DIRECTION OF ARROW "A"**  
TYPICAL MOUNTING DETAILS (4 PLACES)

**CAUTION:**

**THE TEMPORARY LIFTING SUPPORTS (PAINTED YELLOW) MUST REMAIN ATTACHED TO THE TRANSFORMER UNTIL THE TRANSFORMER IS INSTALLED INTO ITS FINAL POSITION.**

**THE SUPPORTS MUST THEN BE REMOVED PRIOR TO ENERGIZING THE TRANSFORMER.**

**APPROX TOTAL WEIGHT LBS [KG]**

**AL WINDINGS: 900 [408]**

**CU WINDINGS: 1040 [472]**

**kVA RATING:**

**K-FACTOR:**

**PRI VOLTAGE:**

**SEC VOLTAGE:**

**FREQ (Hz):**

**TEMP RISE:**

**WINDING MATL:**

**ES SHIELD:**

**SOUND LVL (dB):**

**CUSTOMER TERMINATION**

LOCATION	CONNECTION TYPE	HOLE SIZE
PRIMARY DISCONNECT SWITCH	TCAL63 LUGS (2 HOLES EACH LUG)	.84 DIA (2 HOLES) 3/0 - 500 MCM
SECONDARY BUS BARS	BUS BARS (4 HOLES EACH BAR)	.56 DIA (4 HOLES)

**NOTES:**

- 1) NEMA AFA DRY TYPE TRANSFORMER. COMPLIES WITH APPLICABLE NEMA STANDARDS AND IEEE C57.12.01; UL LISTED 1561.
- 2) THERMAL SWITCHES ACTIVATE AT: 125° C (FANS), 180° C (ALARM), 200° C (DISCONNECT).
- 3) THE TEMPERATURE RISE LISTED IS DETERMINED WHEN THE TRANSFORMER IS MOUNTED IN A STANDARD NEMA 2 ENCLOSURE.
- 4) TRANSFORMER IS DRY TYPE, CLASS AA FOR INDOOR USE.
- 5) WHEN MOVING WITH A PALLET JACK OR FORK TRUCK, INSERT FORKS COMPLETELY UNDERNEATH BOTH FRONT AND REAR CORE CLAMPS. FOR CRANE LIFTING, USE 1" [25 MM] DIAMETER HOLES IN THE TOP CORE CLAMPS.
- 6) 6" [152 MM] MINIMUM CLEARANCE IS REQUIRED FROM ALL WALLS.
- 7) ⌀ INDICATES APPROXIMATE CENTER OF GRAVITY.

**JOB NAME:**

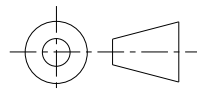
**SPEEDI PROP:**

UNLESS OTHERWISE SPECIFIED ALL DIMENSIONS ARE INCH [MM]



**GE Energy**

THIRD ANGLE PROJECTION



**DRY TYPE TRANSFORMER OUTLINE DRAWING  
TYPE TRANSFORMER, 3-PHASE  
(CORE & COIL UNIT WITHOUT MOUNTING BRACKETS)**

**CAD DRAWING: 303B899AAP078**

**SHEET 3 OF 3**

**CATALOG #**

**REV 16**