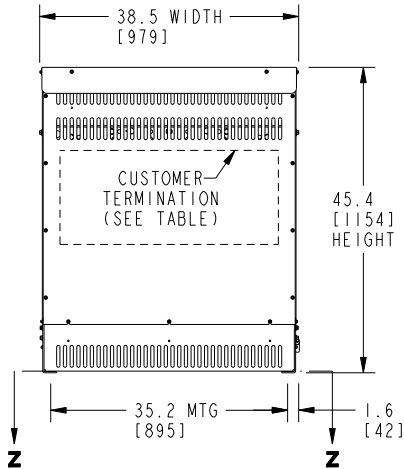
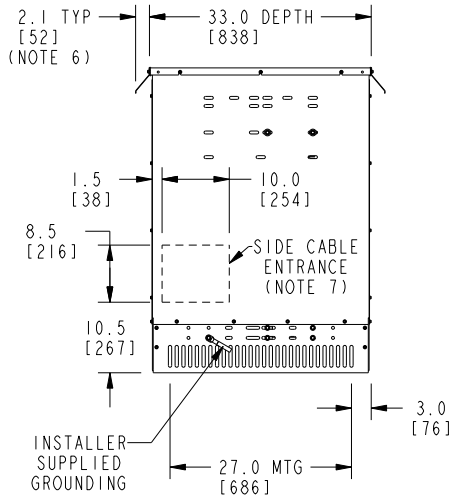


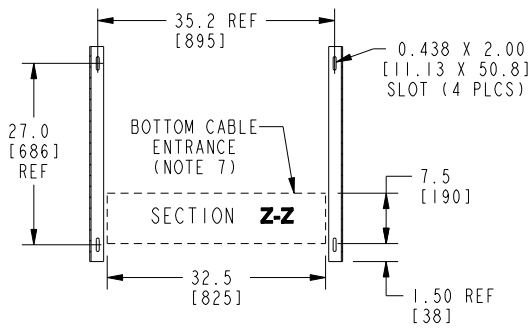
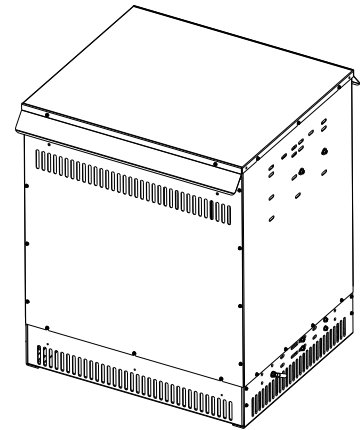
FRONT VIEW



SIDE VIEW



ISOMETRIC VIEW



BOTTOM VIEW OF MOUNTING

CUSTOMER TERMINATION		
LOCATION	CONNECTION TYPE	HOLE SIZE
PRIMARY DISCONNECT SWITCH	TCAL81 LUGS (3 HOLES EACH LUG)	.84 DIA (3 HOLES) 3/0 - 500 MCM
SECONDARY BUS BARS	BUS BARS (6 HOLES EACH BAR)	.56 DIA (6 HOLES)

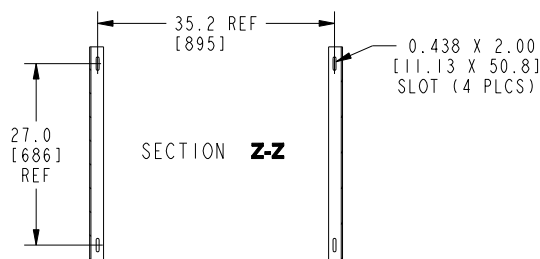
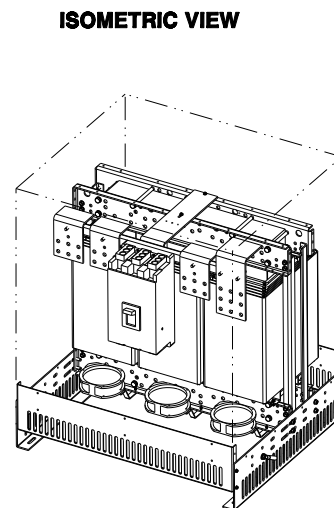
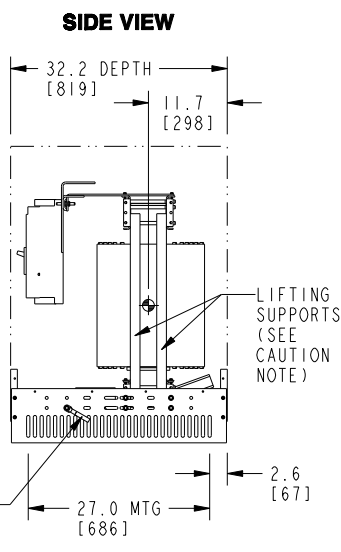
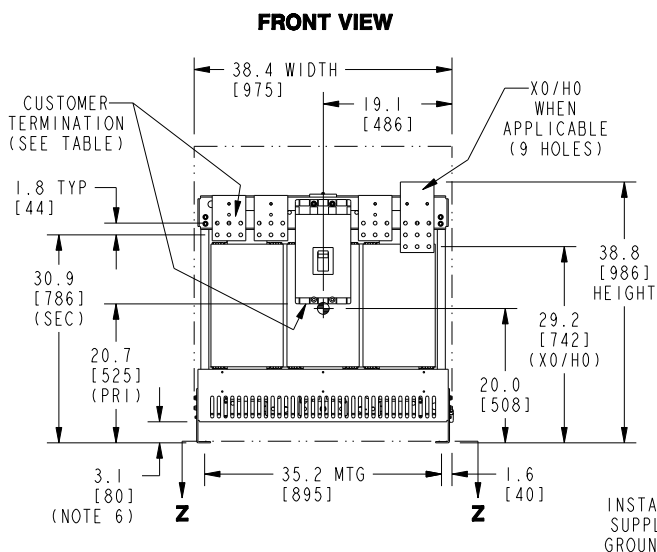
APPROX TOTAL WEIGHT LBS [KG]
AL WINDINGS: 1590 [721]
CU WINDINGS: 1780 [807]

kVA RATING:
K-FACTOR:
PRI VOLTAGE:
SEC VOLTAGE:
FREQ (Hz):
TEMP RISE:
WINDING MATL:
ES SHIELD:
SOUND LVL (dB):

NOTES:

- 1) NEMA AFA DRY TYPE TRANSFORMER. COMPLIES WITH APPLICABLE NEMA STANDARDS AND IEEE C57.12.01; UL LISTED 1561.
- 2) THERMAL SWITCHES ACTIVATE AT: 125° C (FANS), 180° C (ALARM), 200° C (DISCONNECT).
- 3) THE TEMPERATURE RISE LISTED IS DETERMINED WHEN THE TRANSFORMER IS MOUNTED IN A STANDARD NEMA 2 ENCLOSURE.
- 4) TRANSFORMER IS DESIGNED FOR FLOOR MOUNTING. OPTIONAL WALL MOUNTING BRACKETS ARE NOT AVAILABLE FOR THIS DESIGN/STYLE.
- 5) TRANSFORMER IS DRY TYPE, CLASS AA, WITH VENTILATED ENCLOSURE FOR INDOOR USE. OPTIONAL RAINSHIELD KITS ARE AVAILABLE TO ADAPT UNIT FOR TYPE 3R OUTDOOR USE WITHOUT VOIDING THE WARRANTY.
- 6) APPLICABLE WHEN OPTIONAL RAINSHIELDS ARE INSTALLED. RAINSHIELDS ARE SHIPPED IN KITS FOR FIELD INSTALLATION.
- 7) CABLE ENTRANCE IS PERMITTED THROUGH THE LEFT SIDE, RIGHT SIDE AND/OR BOTTOM ENCLOSURE PANELS ONLY. CABLE ENTRANCE IS NOT PERMITTED THROUGH THE FRONT, REAR OR TOP PANELS.
- 8) WHEN MOVING WITH A PALLET JACK OR FORK TRUCK, INSERT FORKS COMPLETELY UNDERNEATH BOTH FRONT AND REAR LIFTING GRILLS. FOR CRANE LIFTING, USE 1" [25 MM] DIAMETER HOLES IN THE TOP CORE CLAMPS.
- 9) ENCLOSURE PAINT COLOR IS ANSI #61 GRAY.
- 10) 6" [152 MM] MINIMUM CLEARANCE IS REQUIRED FROM ALL WALLS.

JOB NAME: SPEEDI PROP:	UNLESS OTHERWISE SPECIFIED ALL DIMENSIONS ARE INCH [MM]		
	THIRD ANGLE PROJECTION 	DRY TYPE TRANSFORMER OUTLINE DRAWING TYPE TRANSFORMORE, 3-PHASE (ENCLOSED UNIT)	
CAD DRAWING: 303B899AAP079	SHEET 1 OF 3	CATALOG #	REV 16



BOTTOM VIEW OF MOUNTING HOLE PATTERN

CAUTION:

THE TEMPORARY LIFTING SUPPORTS (PAINTED YELLOW) MUST REMAIN ATTACHED TO THE TRANSFORMER UNTIL THE TRANSFORMER IS INSTALLED INTO ITS FINAL POSITION.

THE SUPPORTS MUST THEN BE REMOVED PRIOR TO ENERGIZING THE TRANSFORMER.

APPROX TOTAL WEIGHT LBS [KG]

AL WINDINGS: 1470 [667]

CU WINDINGS: 1660 [753]

CUSTOMER TERMINATION

LOCATION	CONNECTION TYPE	HOLE SIZE
PRIMARY DISCONNECT SWITCH	TCAL81 LUGS (3 HOLES EACH LUG)	.84 DIA (3 HOLES) 3/0 - 500 MCM
SECONDARY BUS BARS	BUS BARS (6 HOLES EACH BAR)	.56 DIA (6 HOLES)

kVA RATING:

K-FACTOR:

PRI VOLTAGE:

SEC VOLTAGE:

FREQ (Hz):

TEMP RISE:

WINDING MATL:

ES SHIELD:

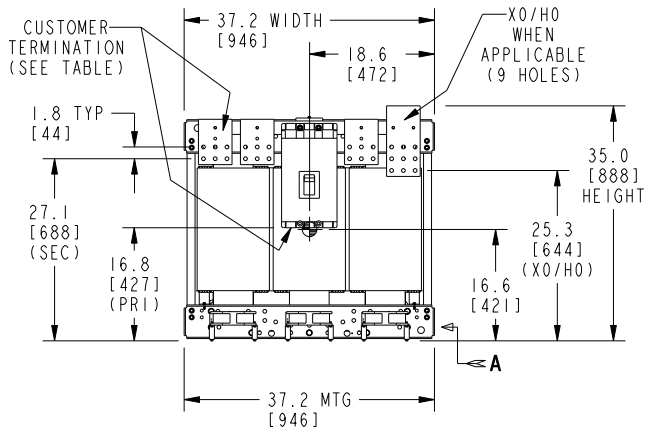
SOUND LVL (dB):

NOTES:

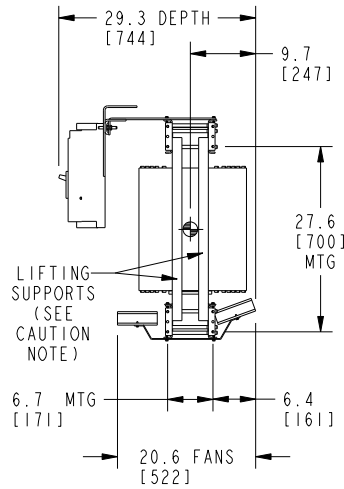
- 1) NEMA AFA DRY TYPE TRANSFORMER. COMPLIES WITH APPLICABLE NEMA STANDARDS AND IEEE C57.12.01; UL LISTED 1561.
- 2) THERMAL SWITCHES ACTIVATE AT: 125° C (FANS), 180° C (ALARM), 200° C (DISCONNECT).
- 3) THE TEMPERATURE RISE LISTED IS DETERMINED WHEN THE TRANSFORMER IS MOUNTED IN A STANDARD NEMA 2 ENCLOSURE.
- 4) TRANSFORMER IS DRY TYPE, CLASS AA FOR INDOOR USE.
- 5) WHEN MOVING WITH A PALLET JACK OR FORK TRUCK, INSERT FORKS COMPLETELY UNDERNEATH BOTH FRONT AND REAR LIFTING GRILLS. FOR CRANE LIFTING, USE 1" [25 MM] DIAMETER HOLES IN THE TOP CORE CLAMPS.
- 6) PAINTED GRILL AND MTG BRACKET COLOR IS ANSI #61 GRAY.
- 7) 6" [152 MM] MINIMUM CLEARANCE IS REQUIRED FROM ALL WALLS.
- 8) ⌀ INDICATES APPROXIMATE CENTER OF GRAVITY.

JOB NAME: SPEEDI PROP:	UNLESS OTHERWISE SPECIFIED ALL DIMENSIONS ARE INCH [MM]		GE Energy DRY TYPE TRANSFORMER OUTLINE DRAWING TYPE TRANSFORMER, 3-PHASE (CORE & COIL UNIT WITH MOUNTING BRACKETS)
	THIRD ANGLE PROJECTION 		
CAD DRAWING: 303B899AAP079	SHEET 2 OF 3		REV 16

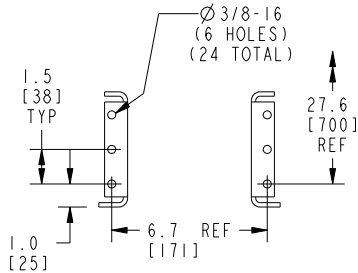
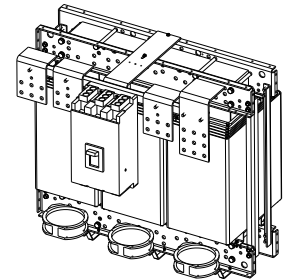
FRONT VIEW



SIDE VIEW



ISOMETRIC VIEW



ENLARGED VIEW IN DIRECTION OF ARROW "A"
TYPICAL MOUNTING DETAILS (4 PLACES)

CAUTION:

THE TEMPORARY LIFTING SUPPORTS (PAINTED YELLOW) MUST REMAIN ATTACHED TO THE TRANSFORMER UNTIL THE TRANSFORMER IS INSTALLED INTO ITS FINAL POSITION.

THE SUPPORTS MUST THEN BE REMOVED PRIOR TO ENERGIZING THE TRANSFORMER.

APPROX TOTAL WEIGHT LBS [KG]

AL WINDINGS: 1430 [649]

CU WINDINGS: 1620 [735]

CUSTOMER TERMINATION

LOCATION	CONNECTION TYPE	HOLE SIZE
PRIMARY DISCONNECT SWITCH	TCAL81 LUGS (3 HOLES EACH LUG)	.84 DIA (3 HOLES) 3/0 - 500 MCM
SECONDARY BUS BARS	BUS BARS (6 HOLES EACH BAR)	.56 DIA (6 HOLES)

NOTES:

- 1) NEMA AFA DRY TYPE TRANSFORMER. COMPLIES WITH APPLICABLE NEMA STANDARDS AND IEEE C57.12.01; UL LISTED 1561.
- 2) THERMAL SWITCHES ACTIVATE AT: 125° C (FANS), 180° C (ALARM), 200° C (DISCONNECT).
- 3) THE TEMPERATURE RISE LISTED IS DETERMINED WHEN THE TRANSFORMER IS MOUNTED IN A STANDARD NEMA 2 ENCLOSURE.
- 4) TRANSFORMER IS DRY TYPE, CLASS AA FOR INDOOR USE.
- 5) WHEN MOVING WITH A PALLET JACK OR FORK TRUCK, INSERT FORKS COMPLETELY UNDERNEATH BOTH FRONT AND REAR CORE CLAMPS. FOR CRANE LIFTING, USE 1" [25 MM] DIAMETER HOLES IN THE TOP CORE CLAMPS.
- 6) 6" [152 MM] MINIMUM CLEARANCE IS REQUIRED FROM ALL WALLS.
- 7) ⌀ INDICATES APPROXIMATE CENTER OF GRAVITY.

kVA RATING:
K-FACTOR:
PRI VOLTAGE:
SEC VOLTAGE:
FREQ (Hz):
TEMP RISE:
WINDING MATL:
ES SHIELD:
SOUND LVL (dB):

JOB NAME: SPEEDI PROP:	UNLESS OTHERWISE SPECIFIED ALL DIMENSIONS ARE INCH [MM]	<p>GE Energy</p>	
	<p>THIRD ANGLE PROJECTION</p>		<p>DRY TYPE TRANSFORMER OUTLINE DRAWING TYPE TRANSFORMER, 3-PHASE (CORE & COIL UNIT WITHOUT MOUNTING BRACKETS)</p>
CAD DRAWING: 303B899AAP079	SHEET 3 OF 3	CATALOG #	REV 16