

SHEET INDEX

CONTENTS	SHEET NO	ISSUE NO																					
		1	2	3	4	5	6	7	8	9	10	11	12	13	14	15	16	17	18	19	20	21	22
SHEET INDEX SUPPORTING INFORMATION ENGINEERING NOTES FEATURE TABLES MANUFACTURING NOTES	A1	1	2	3	4	5	6																
FRAME GND DISTRIBUTION GROUND BUS BATTERY BUS / SHUNT	B1	1	1	1	1	1	1																
METER PANEL	B2	1	1	3	3	3	3																
METER PANEL	B3	1	2	3	3	5	5																
FUSE PANEL	B4	1	1	3	4	4	6																
BRANCH METERING SWITCH PANEL DIGITAL METER	B5	1	1	1	1	1	6																

SHOP INST		ISSUES & REVS			
NO.	DESCRIPTION	ISSUE NO.	CHG. NO.	DATE	BY
1	8500050P ORIG. REL. 05-11-99 VLD				
2	8601820P ADD NOTE 56. 06-29-99 RFS				
3	8602019P ADD FUSE F6. ADD WIRING FIG. 6. 08-31-99 VLD				
4	8603478P CHANGED 800 AMP TO 600 AMP. 08-23-00 RFS				
5	8604668P LABELS TO: AC FAIL TO DISCH CURR. BTC TO MON FAIL HT TO BATT DISC. 02-21-01 RFS				
6	8604840P FIG. 5A, F ADDED. FA ALM CIR 6200434P-1. FIG. 7 ADDED WIRE 17 TO 3150443. 05-08-01 HRK				

ENGINEERING NOTES

- A FIVE FOOT SIX GAGE WIRE IS PROVIDED FOR FRAME GROUNDING TO BE TAPPED INTO THE OFFICE GROUNDING AS REQUIRED.
- RELAY ALARM CONTACTS ARE SHOWN DEENERGIZED.  
RELAY ALARM CONTACTS FOR ALARMS 1 THROUGH 9 ARE DEENERGIZED IN THEIR NORMAL NO ALARM CONDITION AND ENERGIZE UPON AN ALARM.  
RELAY ALARM CONTACTS FOR ALARMS 10 THROUGH 12 ARE ENERGIZED IN THEIR NORMAL NO ALARM CONDITION AND RELEASE UPON AN ALARM CONDITION.
- THE MONITORING SECTION OF THIS PLANT IS AN OPTIONAL FEATURE WITH PREPARED MONITORING POINTS. FOR FURTHER INFORMATION REFER TO THE MANUAL OR CONSULT THE FACTORY.
- A SUPPLEMENTAL GROUND BUS IS PROVIDED FOR CONTROL AND ALARM TERMINATION'S AS REQUIRED.
- A MAXIMUM OF THREE BRANCH SWITCHES CAN BE INSTALLED IN THE BRANCH METERING AND SWITCH PANEL.
- WHEN THE DISCHARGE CURRENT SIGNAL IS APPLIED TO E1A (AC FAIL) CIRCUIT, DIODE D14 MUST BE SHORTED OUT TO ILLUMINATE THE DISCHARGE CURRENT LAMP.
- PLANTS EQUIPPED WITH NETMACS MONITOR MAY HAVE USED ALARM CONTACT SETS.
- PLANTS REQUIRING RECTIFIERS NUMBERING GREATER THAN EIGHT (8) WILL BE EQUIPPED WITH ITEMS IN PARENTHESIS.

SUPPORTING INFORMATION

NO.	CATEGORY
4380138PD	SYSTEM MANUAL
6401050P-1	WIRING LIST

TABLE E FEATURE TABLE						
ITEM COL	ISSUE A	DESCRIPTION B	SPECIFY			REMARKS G
			FIG C	WRG D	APP E	
1	1	FRAME GND	1			NOTE 51
2	1	DISTRIBUTION GND. BUS	2			NOTE 54
3	1	BATTERY BUS / SHUNT	3			
4	1	METER PANEL	4			NOTE 52,53,57,58
5	1	FUSE PANEL	5			
6	1	BRANCH METERING SWITCH PANEL	6			NOTE 55
7	1	DIGITAL METER	7			
8						
9						
10						

TABLE F FUSE REQUIREMENTS							
ITEM COL	SHEET NO. A	FIG B	FUSE			POTENTIAL F	REMARKS G
			AMP C	CODE D	DESIG E		
1	2	4		GMT	F9	-48V	SPARE
2							
3	2	4	1 1/3	GMT	F6	-48V	MONITOR ALARMS
4	2	4		GMT	F7	-48V	SPARE
5							
6							
7							
8							
9							
10							

TABLE D SHEET LOC OF FIGS. & OPT.		
FIG.	OPT.	B SHEET
1		1
2		
3		
4		2
4		3
5		4
6		
7		5

THIS DOCUMENT IS THE PROPERTY OF PECO II, INC. ITS USE OR REPRODUCTION IS AUTHORIZED ONLY FOR RESPONDING TO A REQUEST FOR QUOTATION FROM PECO II, INC. OR FOR THE PERFORMANCE OF WORK FOR PECO II, INC. OR FOR USE IN MAINTAINING PECO II, INC. EQUIPMENT. USE FOR ANY OTHER PURPOSE SHALL BE IN ACCORDANCE WITH SUCH TERMS AS MAY BE AGREED UPON IN WRITING WITH PECO II, INC.

POWER SYSTEM MAIN BAY PEC-165P		4390588T-1
PECO II Inc. Gallion, Ohio, U.S.A.	B	
		SHEET A1

ISSUE  
6

MASTER

FIG. 1  
FRAME GROUND  
NOTE: 51

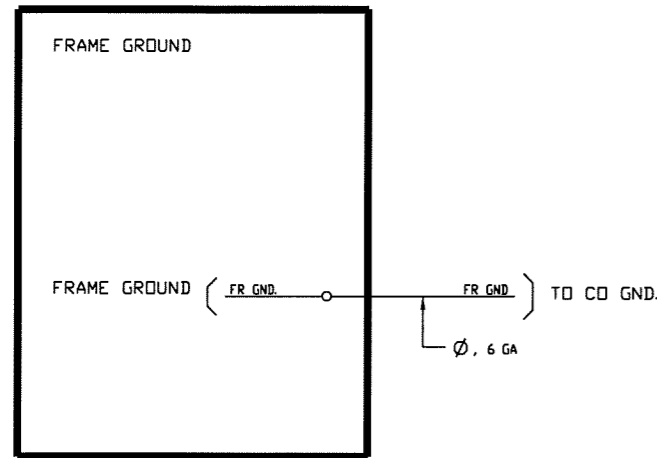


FIG. 2  
DISTRIBUTION GND. BUS

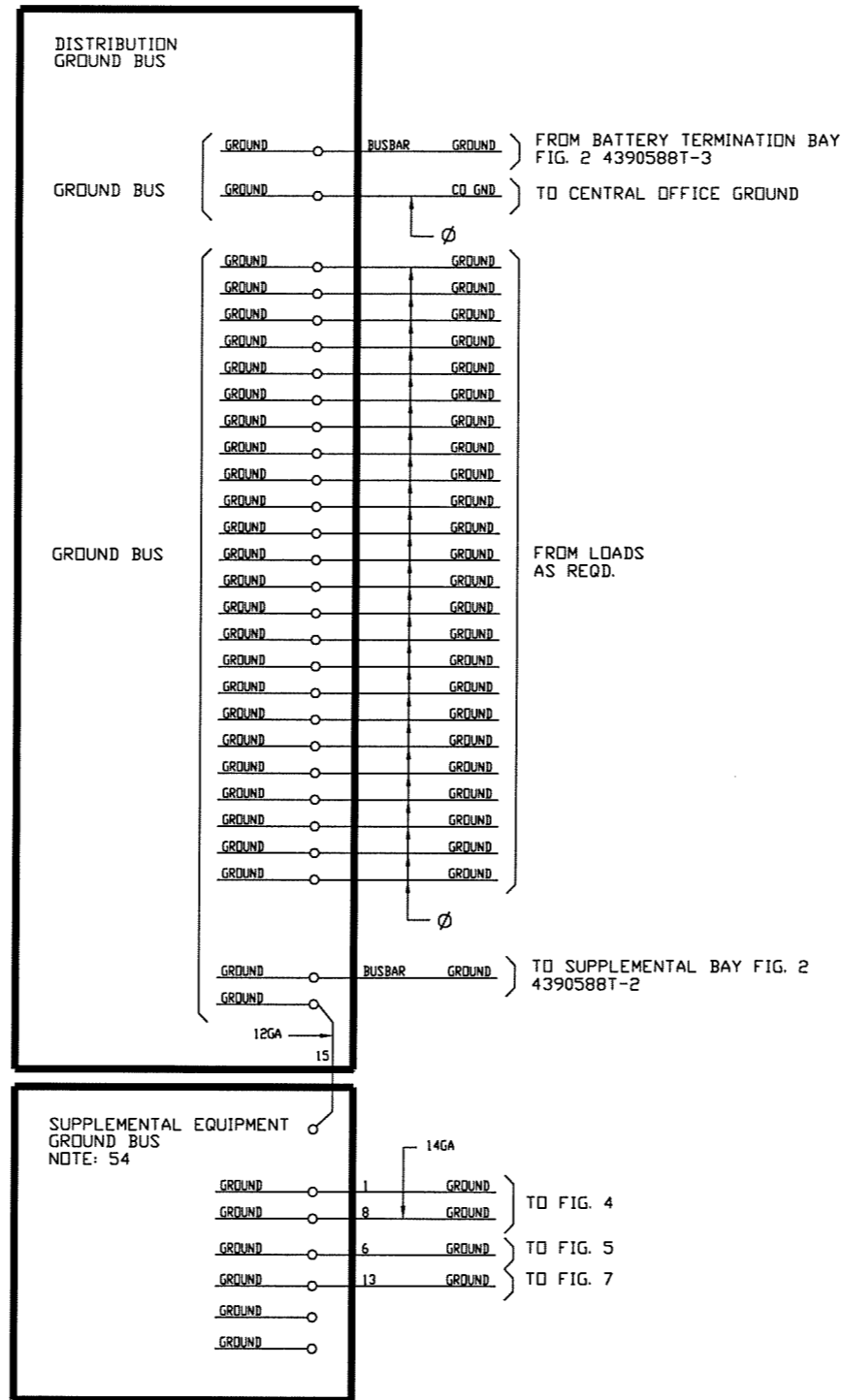
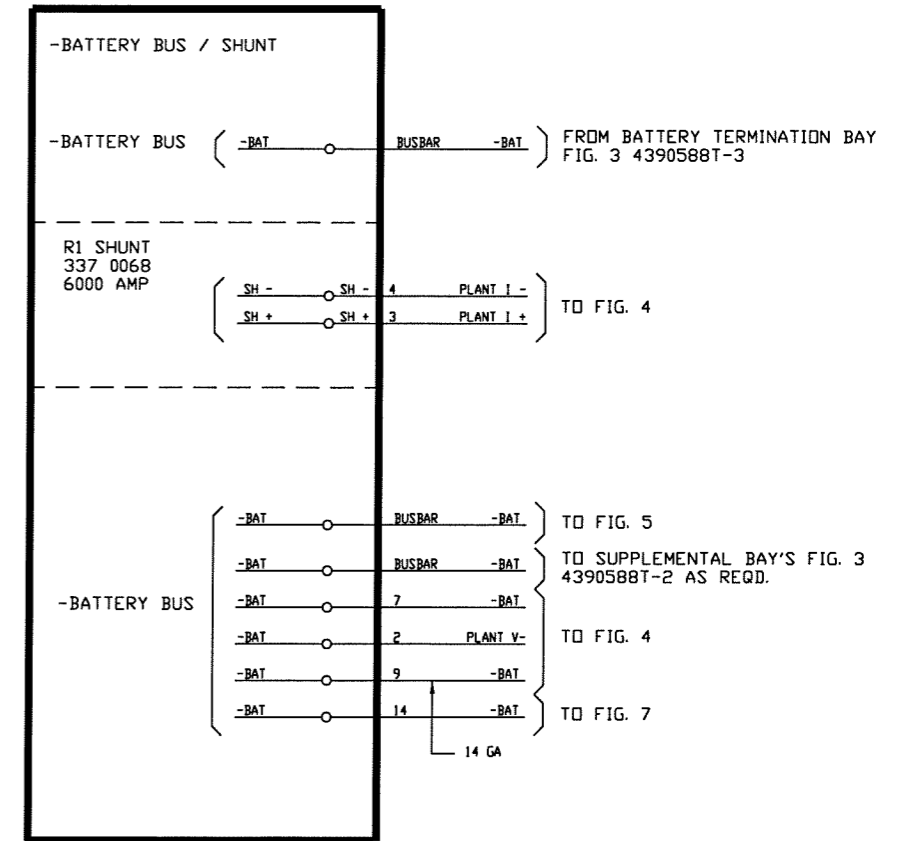


FIG. 3  
BATTERY BUS / SHUNT



ISSUE  
1

4390588T-1

PECO II Inc.  
Canton, Ohio, U.S.A.

B

SHEET B1

FIG. 4  
METER PANEL  
NOTE: 58

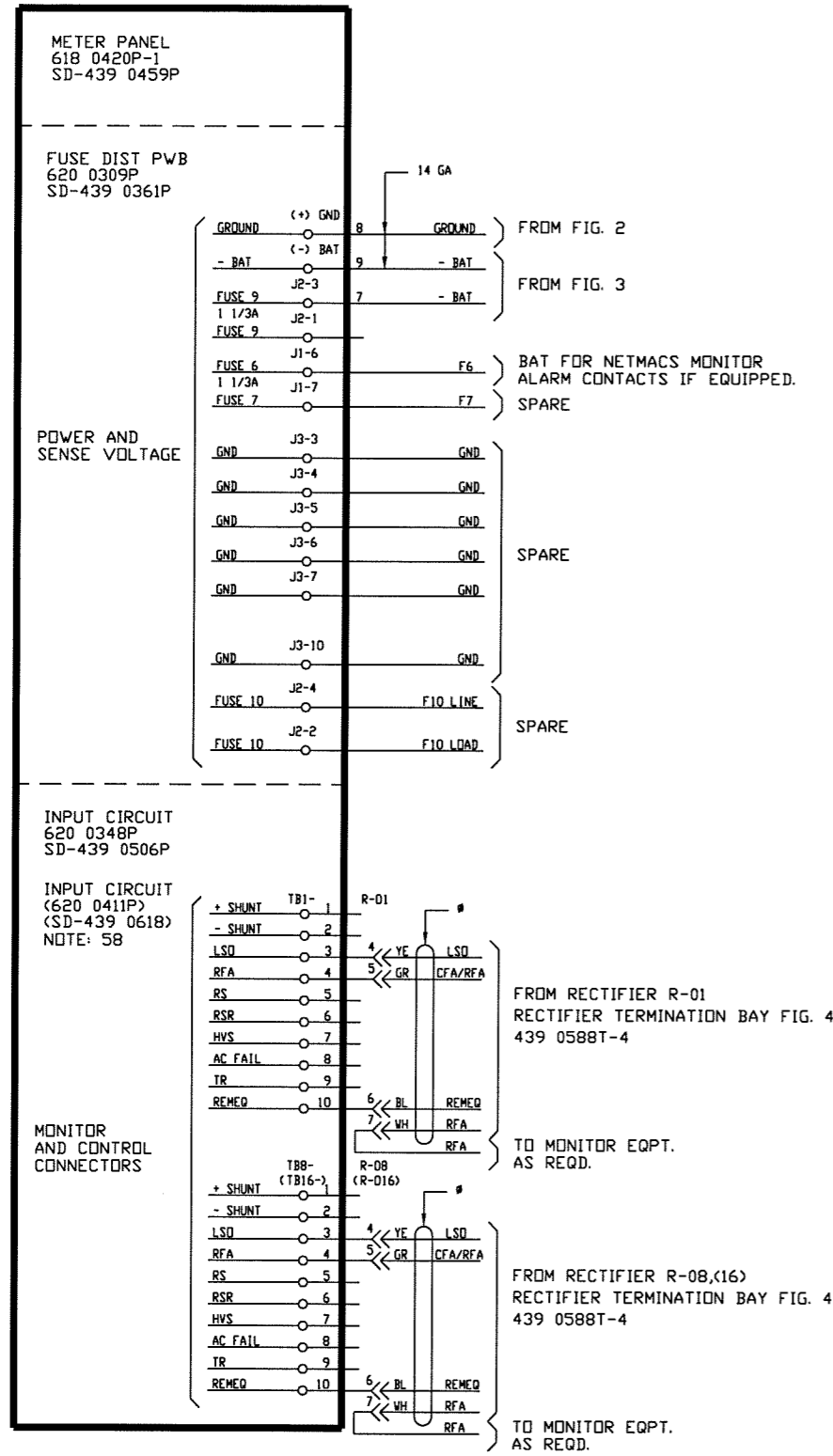
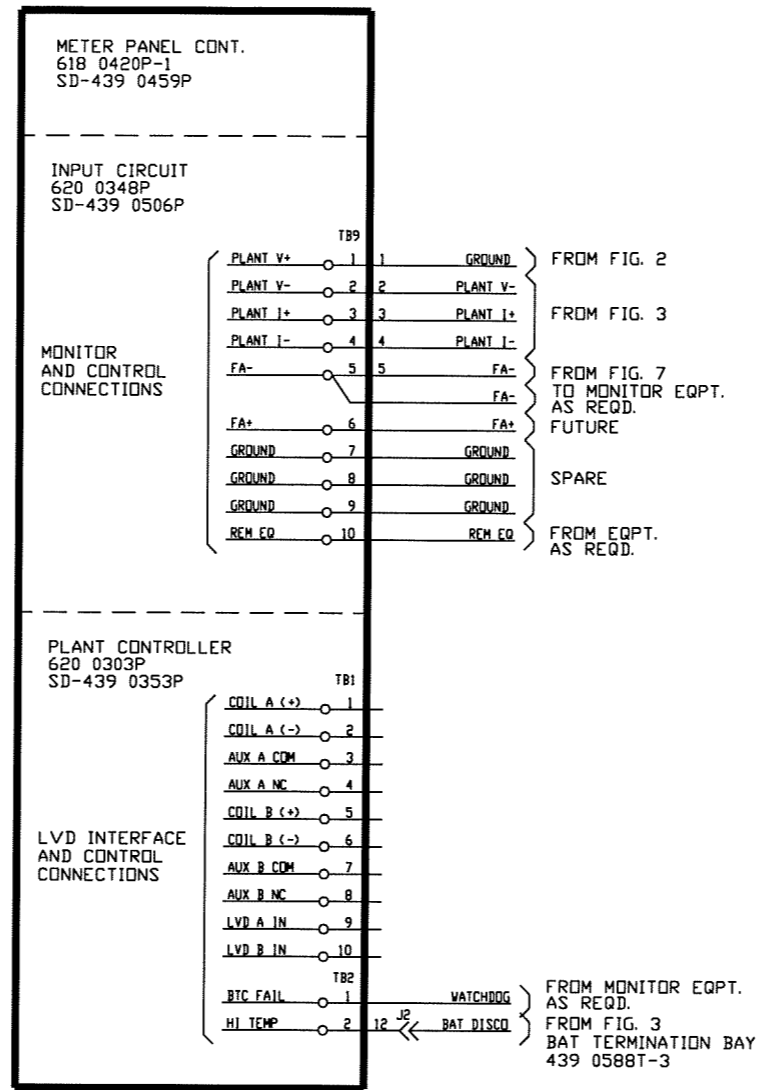


FIG. 4  
METER PANEL CONT.



ISSUE  
3

4390588T-1

FIG. 4  
METER PANEL CONT.  
NOTE: 52,57

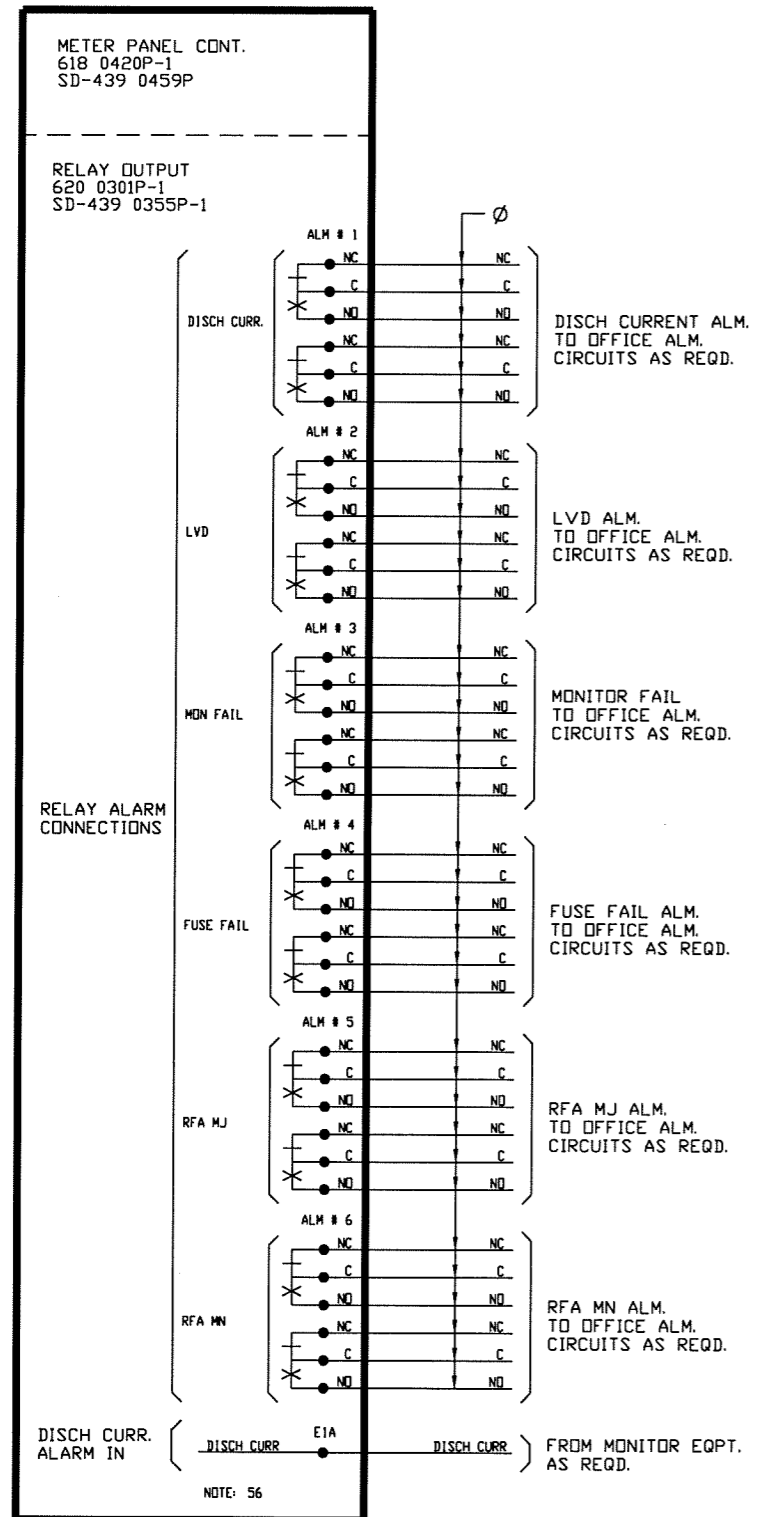


FIG. 4  
METER PANEL CONT.  
NOTE: 52,57

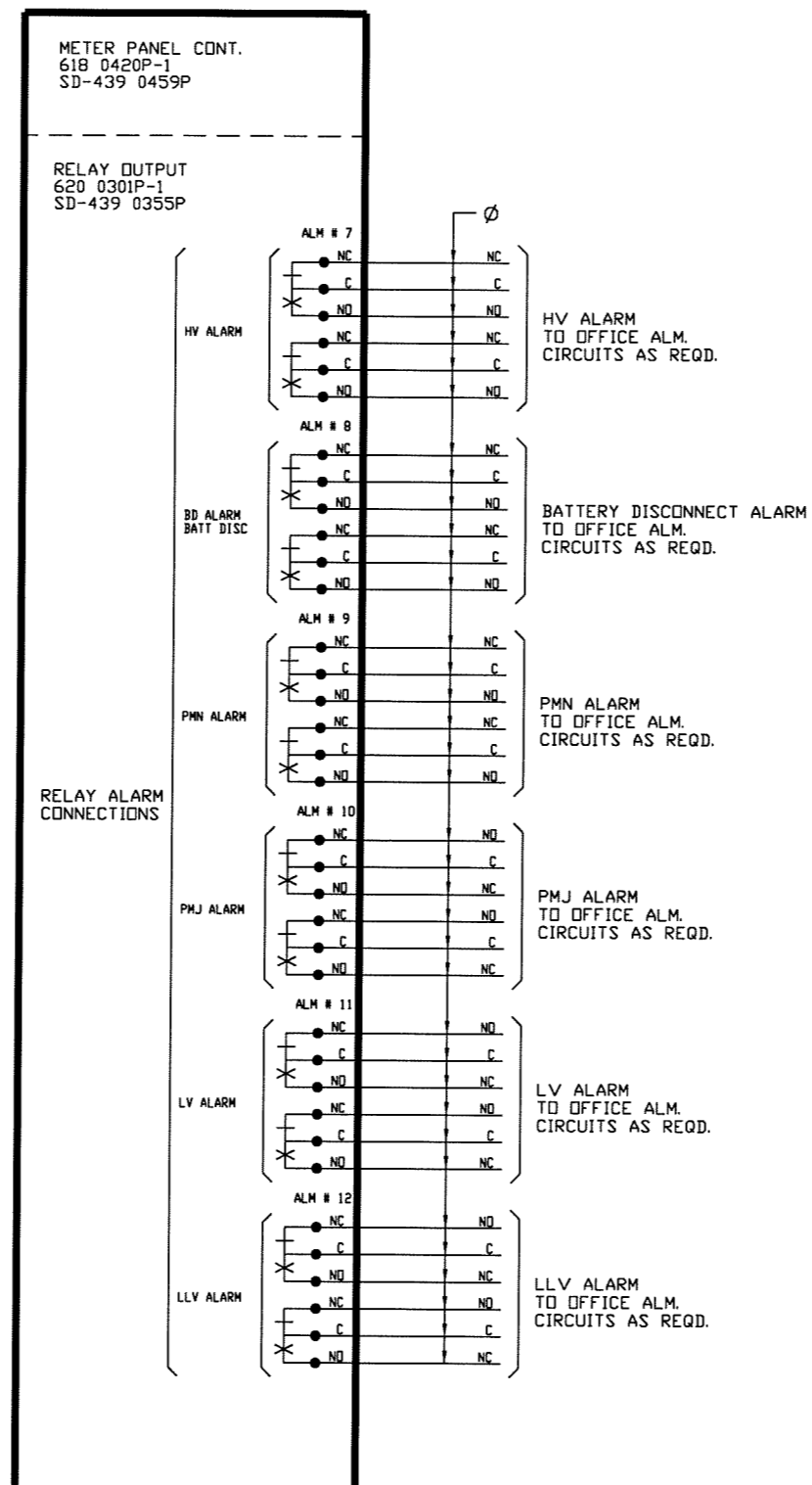


FIG. 4  
METER PANEL CONT.  
NOTE: 53

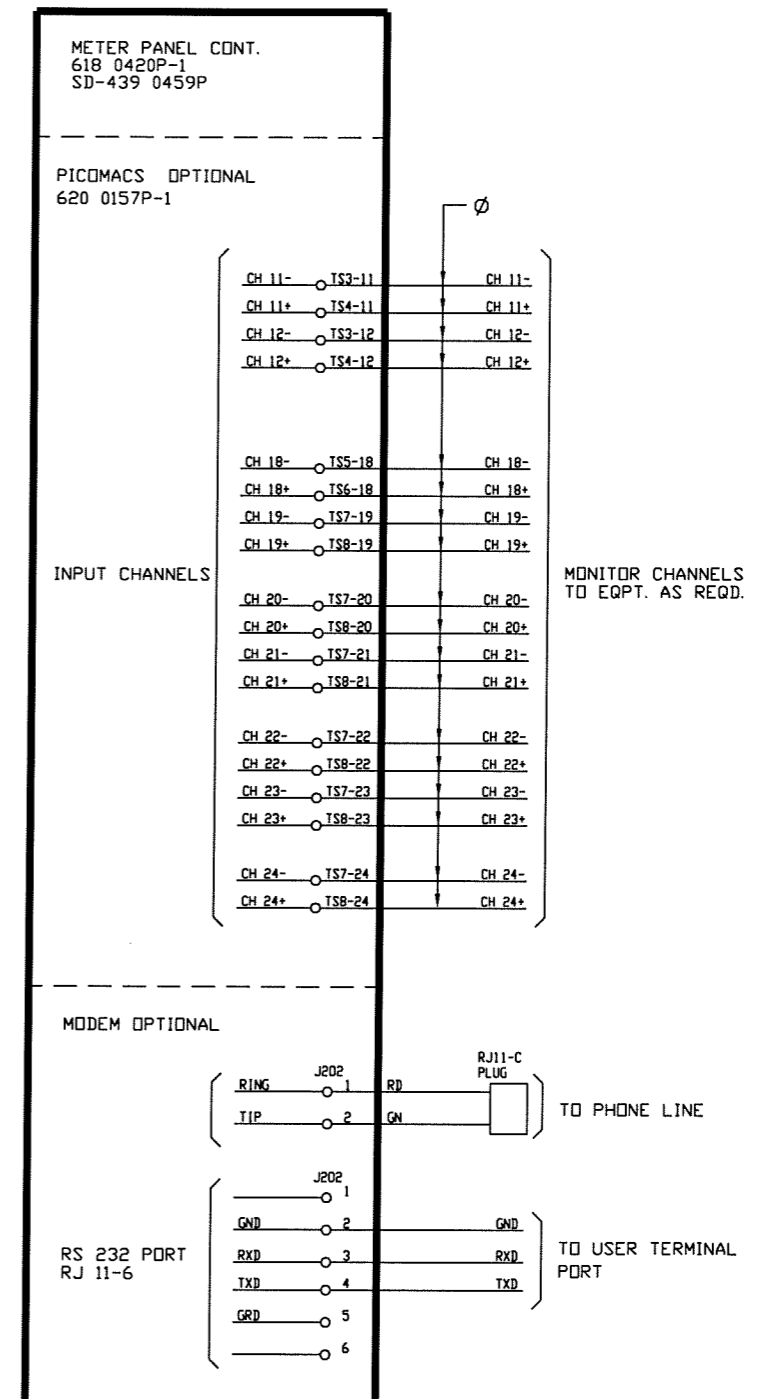


FIG. 5A  
FUSE PANEL

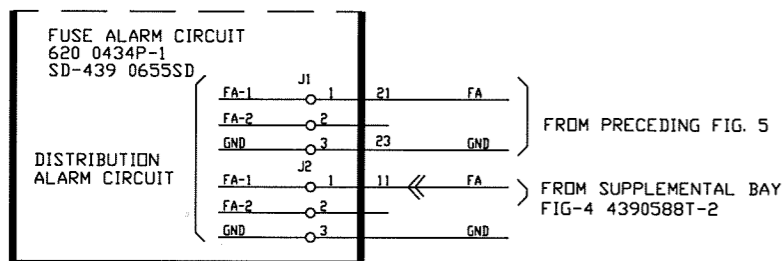
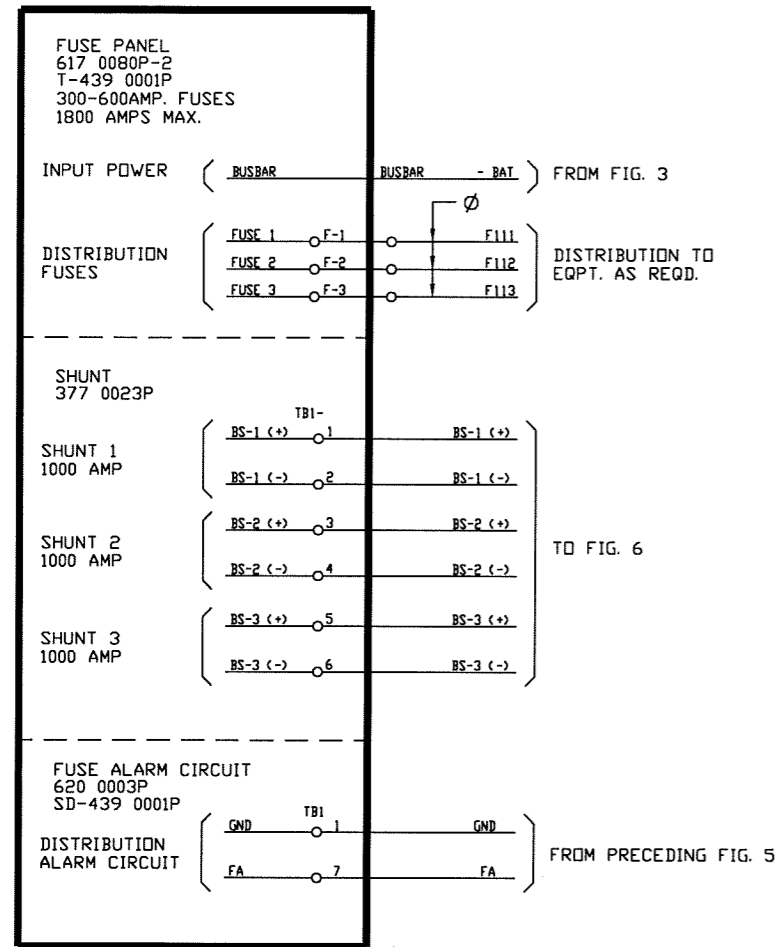


FIG. 5F  
FUSE PANEL

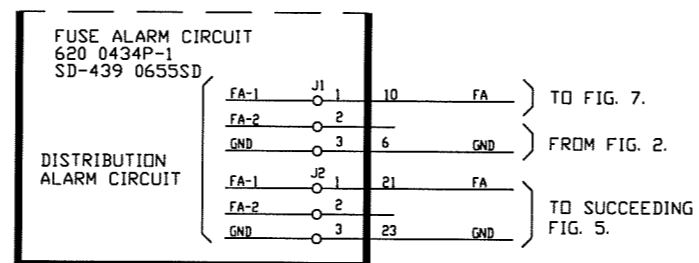
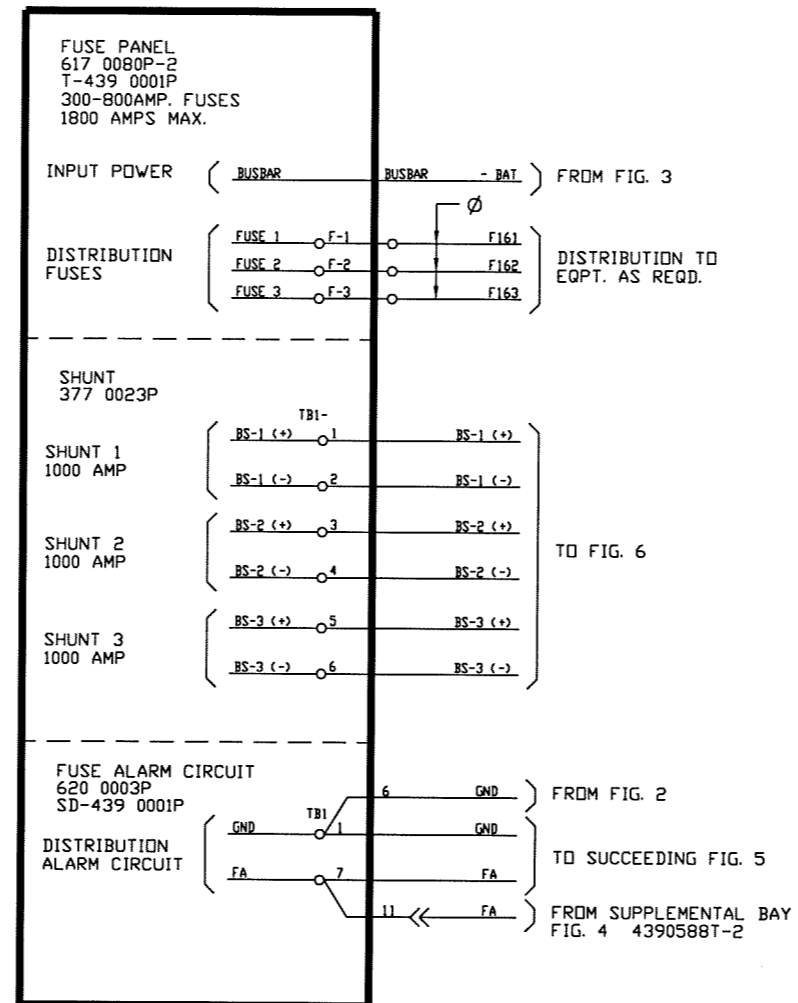


FIG. 6  
BRANCH METERING  
SWITCH PANEL  
NOTE: 55

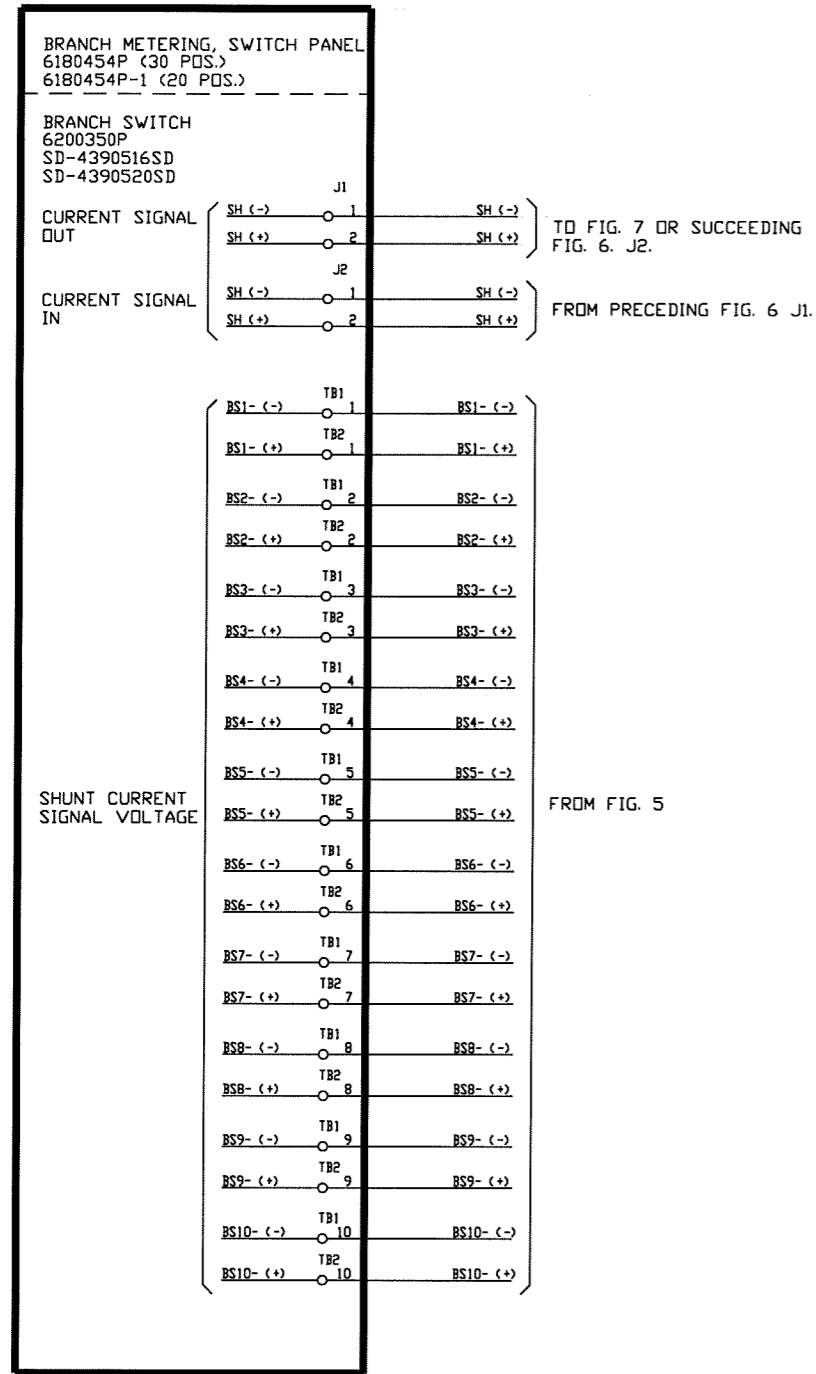


FIG. 7  
DIGITAL METER  
P/O BRANCH METERING  
SWITCH PANEL

