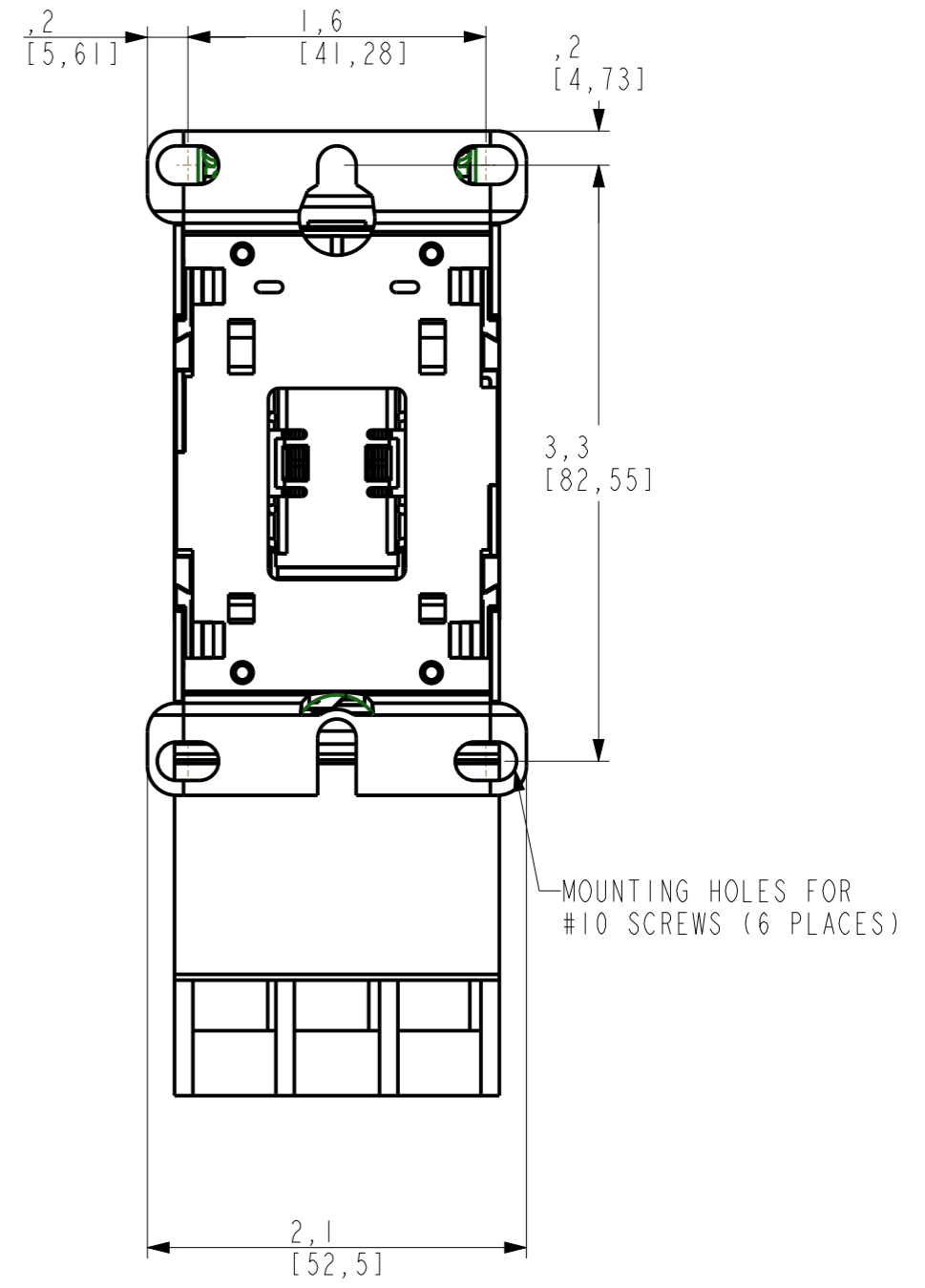
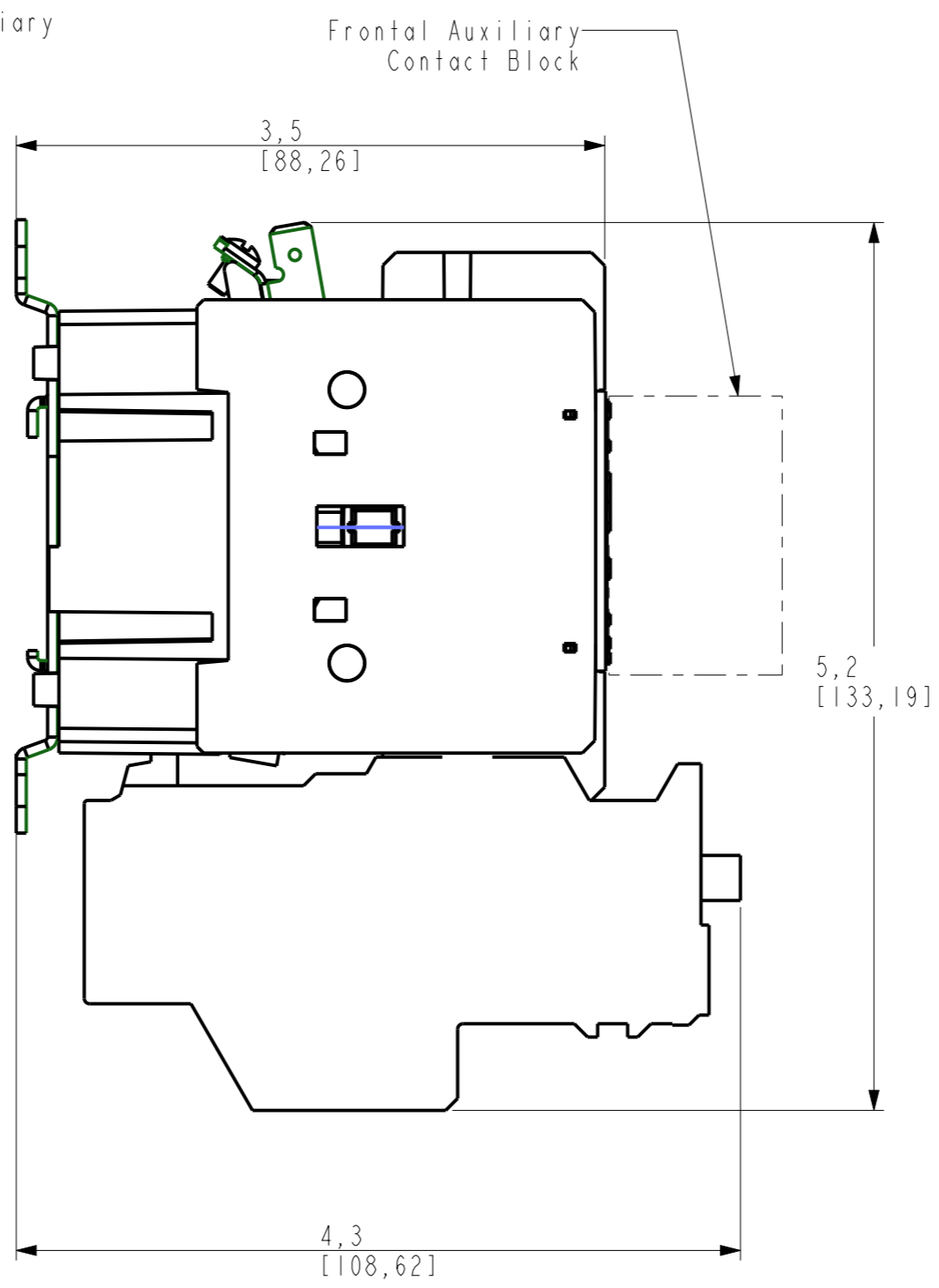
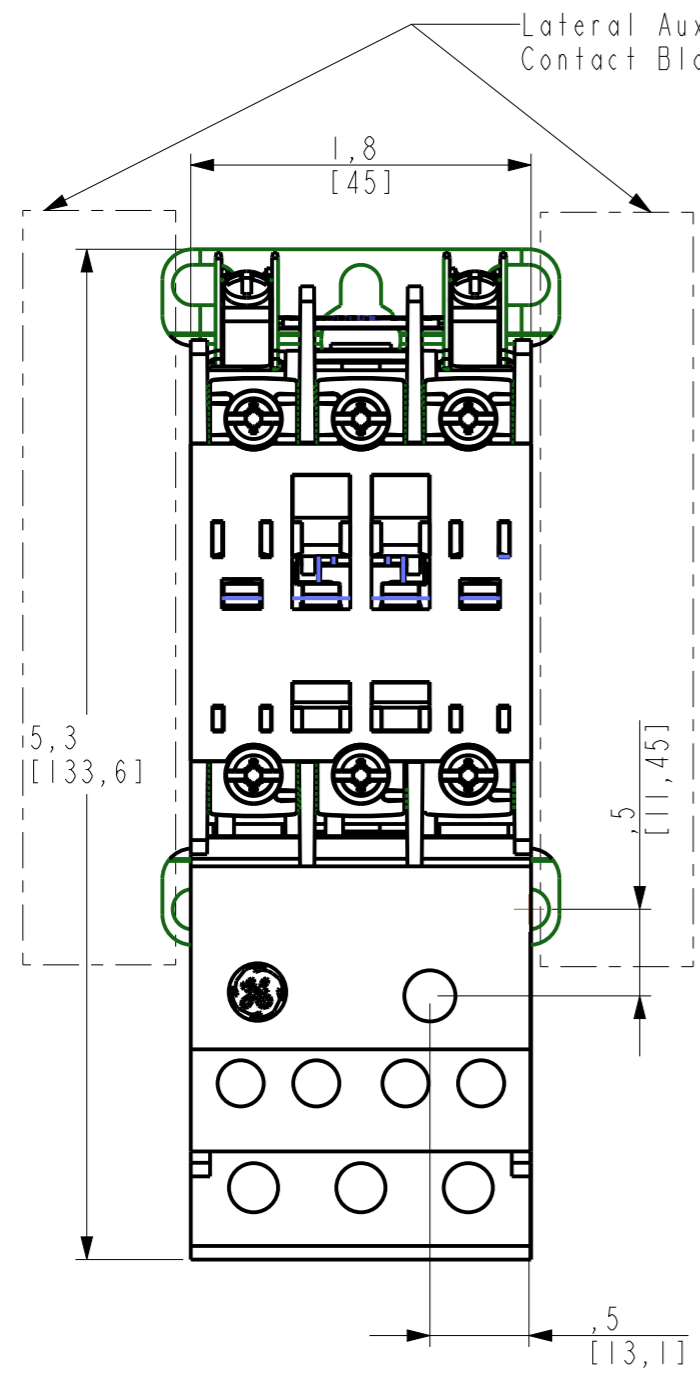


GEPIC INTERNALINK DATABASE INFO - FOR INTERNAL USE ONLY			
DRAWING FILE NAME:	OBJECT RELATED INFORMATION:	REVISION:	STATUS:
TERES-45010109XX-00-00	TERES-45010109XX-00-00	1	1
OBJECT FILE NAME:	SYS:	COM:	1
TERES-45010109XX-00-00	1	1	1
Create			



GE PROPRIETARY AND CONFIDENTIAL INFORMATION: This document is the property of General Electric Company. GE, GEY, and GE Energy are trademarks of GE Energy. This document is based on the design and construction that GE Energy has developed and is not to be used for any other purpose without the express written consent of GE Energy. This document shall be returned to GE upon its request. This document may be subject to certain restrictions under U.S. export control laws and regulations.

DUAL DIMENSIONS INCHES/MILLIMETERS

Article or Material Must Conform to REACH Procedure S1900000 Sec.14  
 Article or Material Must Conform to ROHS Procedure S1900000 Sec.13  
 Part Must Conform to S1900000 Sec.4 Toxicity Procedure

REVISION	DESCRIPTION	DATE	NAME	CHECKED	APPROVED	ECN NO
01	First Issue	22-Apr-15	S.Rivadeneira	-	-	-
REMARK	DESCRIPTION					
-	-					
PRODUCT			MATERIAL			POST TREATMENT
ID	ID 6/8 DIG	DESCRIPTION	REM	ID	DESCRIPTION	REM
-	-	-	-	-	-	-
UNLESS OTHERWISE SPECIFIED						CTQ
TOL DIMENSIONS	TOL ANGLE	FILLET & TOL	DRAFT ANGLE	OTHERS	Scale	PROJECTION
-	-	-	-	-	1:1	ASSEMBLY: assembly_no
					UNIT: in	SUPERSEDES: -
						SUPERSEDED BY: -
		TITLE DP25/30 RT Overload Relay Outline dw. LOCAL FAM CR-553A DP25/30 RT Overload Relay Outline dw.			TERES-45010109XX-00-00 CAD FILE SIZE PAGE OF DRAW NO A3 1 1 450B10109GXX	