

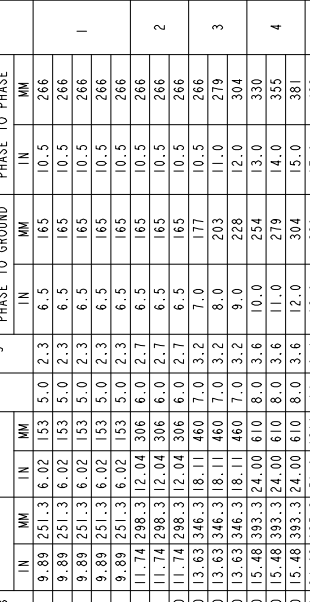
NOTES:

1. INCREASE CLEARANCES ".6" & ".4" 3" PER 1,000 FT. (304.8 mm) OVER 6,000 FT. (1828.8 m).
2. ARRESTER ASSEMBLY CONSISTS OF ARRESTER UNIT, LINE & GROUND TERMINALS WITH CLAMPS, AND 0.3125 INCH HARDWARE.
3. MINIMUM DIMENSIONS FOR ARRESTERS, OTHER APPARATUS STANDARDS, OTHER SPECIFICATIONS OR LOCAL CODES MAY REQUIRE GREATER SPACING.
4. PRESSURE RELIEF CLASS IS 20 KA RMS SYMMETRICAL.
5. LINE & GROUND TERMINALS CAN ACCOMMODATE CU OR AL CABLE SIZE NO. 2 TO 600 MCM (1.250" TO .937" DIA.).
6. MTG. SLOTS FOR .3125 DIA HARDWARE (3) EQUALLY SPACED ON 8.75 (222) B.C. THICKNESS OF LUG = 0.145 (3.68)

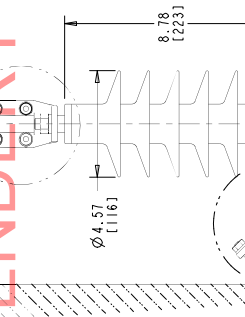
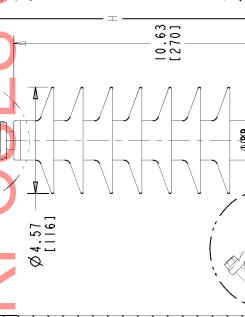
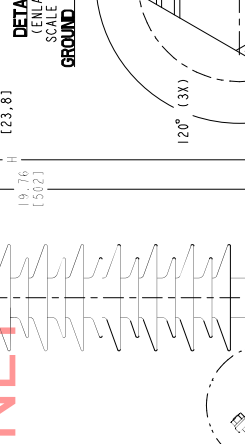
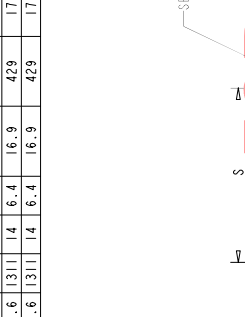
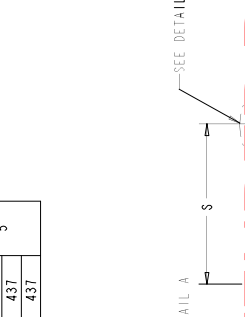
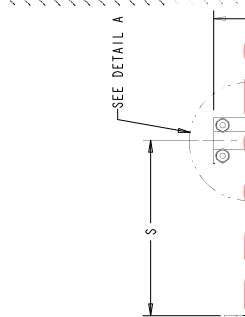
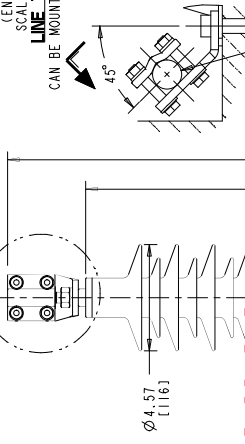
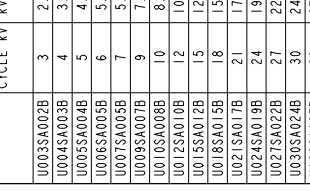
MINIMUM CLEARANCE FROM CENTERLINE

STYLE NO.	DUTY CYCLE	MCOV kVrms	HEIGHT H		CREEPAGE		LBS	kg	PHASE TO GROUND		PHASE TO PHASE		FIGURE
			IN	MM	IN	MM			IN	MM	IN	MM	
U003SA002B	3	2.55	9.89	251.3	6.02	153	5.0	2.3	6.5	165	10.5	266	
U004SA003B	4	3.40	9.89	251.3	6.02	153	5.0	2.3	6.5	165	10.5	266	
U005SA004B	5	4.25	9.89	251.3	6.02	153	5.0	2.3	6.5	165	10.5	266	1
U006SA005B	6	5.10	9.89	251.3	6.02	153	5.0	2.3	6.5	165	10.5	266	
U007SA006B	7	5.95	9.89	251.3	6.02	153	5.0	2.3	6.5	165	10.5	266	
U008SA007B	9	7.65	11.74	298.3	12.04	306	6.0	2.7	6.5	165	10.5	266	2
U010SA008B	10	8.40	11.74	298.3	12.04	306	6.0	2.7	6.5	165	10.5	266	
U012SA010B	12	10.20	11.74	298.3	12.04	306	6.0	2.7	6.5	165	10.5	266	
U015SA012B	15	12.70	13.63	346.3	18.11	460	7.0	3.2	7.0	177	10.5	266	
U018SA015B	18	15.30	13.63	346.3	18.11	460	7.0	3.2	8.0	203	11.0	279	3
U021SA017B	21	17.00	13.63	346.3	18.11	460	7.0	3.2	9.0	228	12.0	304	
U024SA019B	24	19.50	15.48	393.3	24.00	610	8.0	3.6	10.0	254	13.0	330	
U027SA022B	27	22.00	15.48	393.3	24.00	610	8.0	3.6	11.0	279	14.0	355	
U030SA024B	30	24.00	15.48	393.3	24.00	610	8.0	3.6	12.0	304	15.0	381	
U033SA027B	33	27.00	24.62	625.3	51.6	1311	14	6.4	13.0	330	17.0	432	
U036SA029B	36	29.00	24.62	625.3	51.6	1311	14	6.4	16.9	429	17.2	437	
U039SA031B	39	31.50	24.62	625.3	51.6	1311	14	6.4	16.9	429	17.2	437	
U045SA036B	45	36.00	24.62	625.3	51.6	1311	14	6.4	16.9	429	17.2	437	

HORIZONTAL LIMIT FOR GROUNDED OBJECTS



HORIZONTAL 3Ø INSTALLATION LAYOUT



FOR TENDER PURPOSES ONLY

01 OCT 11, 2006	REV. DESCRIPTION & DATE
02 NOV 2, 2006	U033SA027B
03 AUGUST 4, 2009	U033SA027B
04 JUNE 24, 2014	U045SA036B
05 NOV 18, 2015	U033SA027B

01 OCT 11, 2006	REV. DESCRIPTION & DATE
02 NOV 2, 2006	U033SA027B
03 AUGUST 4, 2009	U033SA027B
04 JUNE 24, 2014	U045SA036B
05 NOV 18, 2015	U033SA027B

ABB INC
Power Product Division
3-4544
100 Distribution Circle, Ft. Leavenworth, PA 15046

STANDARD XPI-111 ARRESTER
3-4544
OUTLINE

SCALE: 1/8" = 1"

4F1013 5

REV. DESCRIPTION & DATE