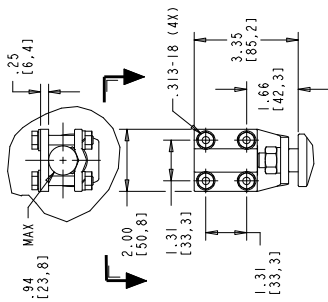
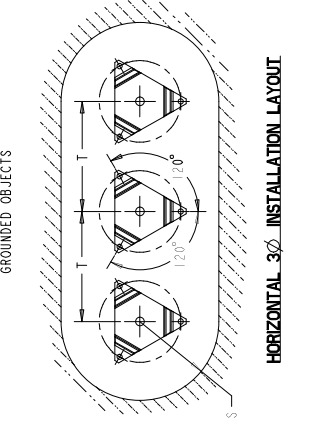


HORIZONTAL LIMIT FOR GROUNDED OBJECTS



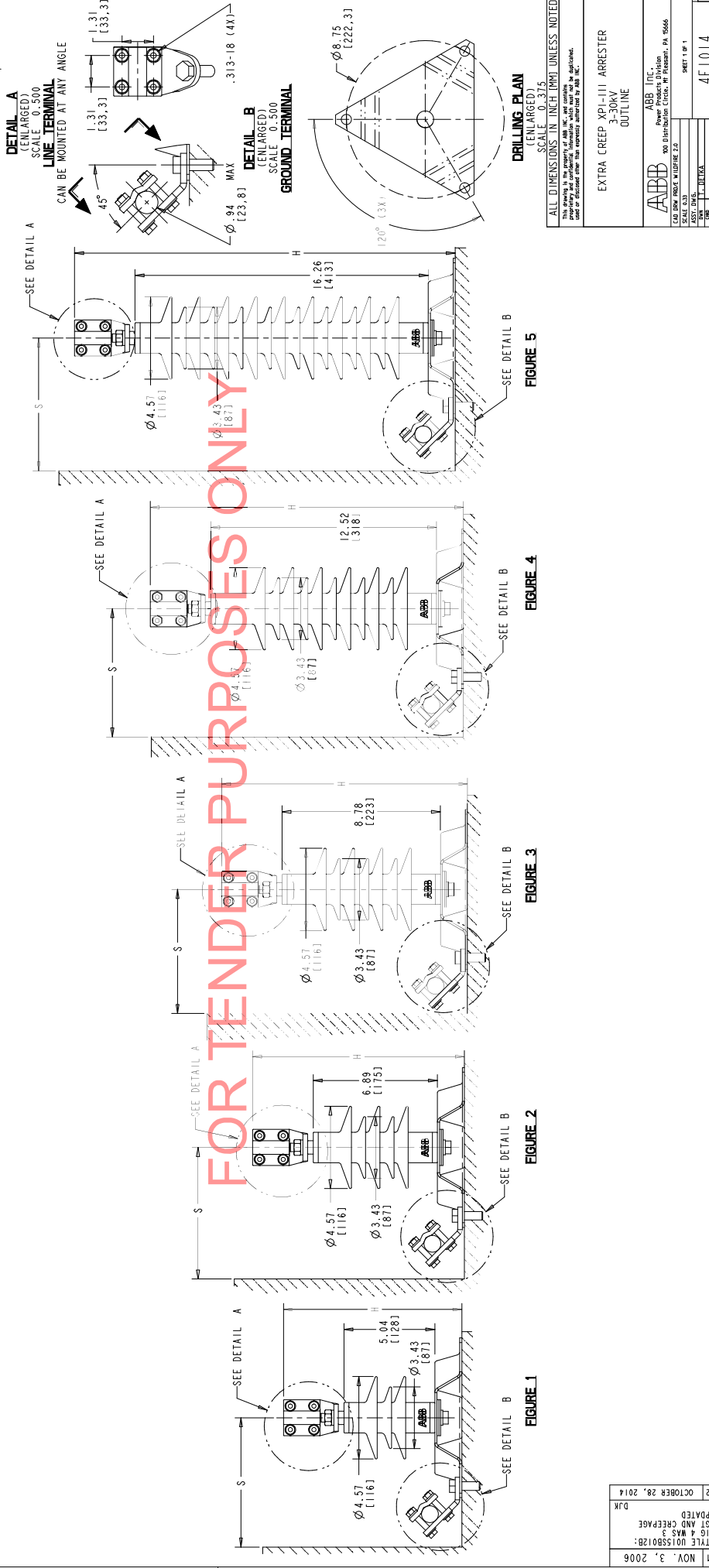
HORIZONTAL  $\phi$  INSTALLATION LAYOUT



NOTES:

1. INCREASE CLEARANCES ".6" & ".4" PER 1,000 FT. (304.8 m) OVER 6,000 FT. (1828.8 m).
2. ARRESTER ASSEMBLY CONSISTS OF ARRESTER UNIT, LINE & GROUND TERMINALS WITH CLAMPS, AND 0.3125 INCH HARDWARE.
3. MINIMUM DIMENSIONS FOR ARRESTERS, OTHER APPARATUS STANDARDS, OTHER SPECIFICATIONS OR LOCAL CODES MAY REQUIRE GREATER SPACING.
4. PRESSURE RELIEF CLASS IS 20 KA RMS SYMMETRICAL.
5. LINE & GROUND TERMINALS CAN ACCOMMODATE CU OR AL CABLE SIZE NO. 2 TO 600 MCM (1.250" TO .937" DIA.).
6. MTG. SLOTS FOR .3125 DIA HARDWARE (3) EQUALLY SPACED ON 8.75 (222) B.C. THICKNESS OF LUG = 0.145 (3.68)

STYLE NO.	DUTY CYCLE	MCOV kVrms	HEIGHT H		CREEPAGE		LBS	kg	MINIMUM CLEARANCE FROM CENTERLINE		FIGURE
			IN	MM	IN	MM			PHASE TO GROUND	PHASE TO PHASE	
U0035B002B	3	2.55	9.89	251.3	9.76	248	5.0	2.3	6.5	10.5	266
U0045B003B	4	3.40	9.89	251.3	9.76	248	5.0	2.3	6.5	10.5	266
U0055B004B	5	4.25	9.89	251.3	9.76	248	5.0	2.3	6.5	10.5	266
U0065B005B	6	5.10	9.89	251.3	9.76	248	5.0	2.3	6.5	10.5	266
U0075B005B	7	5.95	9.89	251.3	9.76	248	5.0	2.3	6.5	10.5	266
U0085B007B	9	7.65	11.74	298.3	14.76	375	6.0	2.7	6.5	10.5	266
U0105B008B	10	8.40	11.74	298.3	14.76	375	6.0	2.7	6.5	10.5	266
U0125B010B	12	10.20	13.63	346.3	18.92	506	6.0	2.7	6.5	10.5	266
U0155B012B	15	12.70	17.37	441.2	28.15	715	7.0	3.2	7.0	17.7	266
U0215B017B	21	17.00	17.37	441.2	28.15	715	7.0	3.2	9.0	228	304
U0245B019B	24	19.50	17.37	441.2	28.15	715	8.0	3.6	10.0	254	330
U0275B022B	27	22.00	21.12	536.4	43.35	1101	8.0	3.6	11.0	279	355
U0305B024B	30	24.40	21.12	536.4	43.35	1101	8.0	3.6	12.0	304	381



DRILLING PLAN (ENLARGED) SCALE 0.375

FIGURE 1

FIGURE 2

FIGURE 3

FIGURE 4

FIGURE 5

ALL DIMENSIONS IN INCH (MM) UNLESS NOTED  
 SCALE 0.375  
 THE DRAWING IS THE PROPERTY OF ABB INC. AND IS NOT TO BE REPRODUCED OR TRANSMITTED IN ANY FORM OR BY ANY MEANS, ELECTRONIC OR MECHANICAL, INCLUDING PHOTOCOPYING, RECORDING, OR BY ANY INFORMATION STORAGE AND RETRIEVAL SYSTEM, WITHOUT THE WRITTEN PERMISSION OF ABB INC.  
 EXTRA CREEP XP1-111 ARRESTER  
 3-304V / 4  
 OUTLINE  
 ABB INC.  
 Power Product Division  
 500 Distribution Circle, W. Pittsboro, PA 15066  
 DATE: 08/11/14  
 SCALE: 0.375  
 SHEET 1 OF 1  
 TITELIST  
 4F1014  
 2  
 REV. DESCRIPTION & DATE  
 01 NOV 3, 2006  
 02 OCTOBER 28, 2014

FOR TENDER PURPOSES ONLY