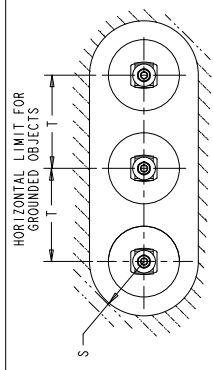
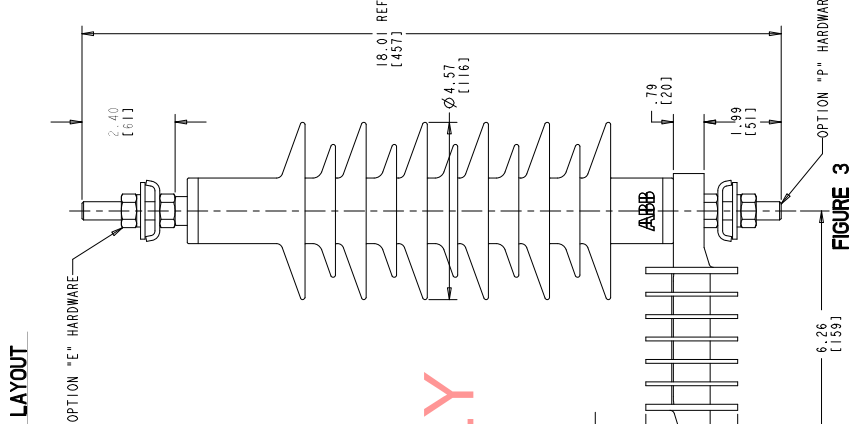
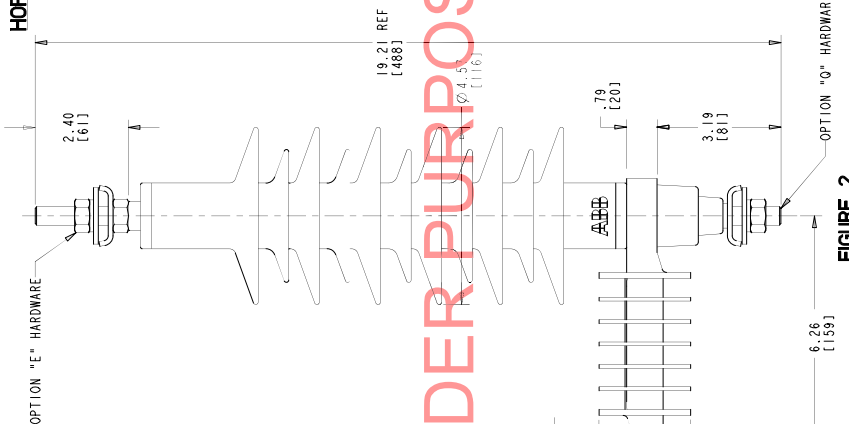
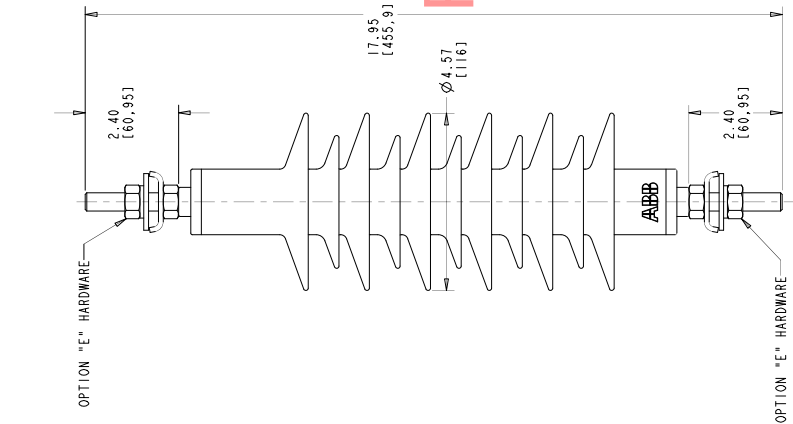


STYLE NO.	DUTY CYCLE kV	MCOV kVrms	CREEPAGE		LBS	KG	PH TO GRD.		PH TO PH		FIGURE
			IN	MM			IN	MM	IN	MM	
D02ISB017ADEE0	21	26.2	33.2	844	5.3	2.4	9.9	251	10.7	273	1
D02ISB017ADEQ0	21	26.2	33.2	844	5.3	2.4	9.9	251	10.7	273	2
D02ISB017ADEP0	21	26.2	33.2	844	5.3	2.4	9.9	251	10.7	273	3



- E - CABLE TERMINAL WITH M12 STUD, 2 NUTS, LOCKWASHER, FLAT WASHER AND TERMINAL CLAMP.
- P - CABLE TERMINAL WITH INSULATING BRACKET, M12 STUD, 2 NUTS, LOCKWASHER, FLAT WASHER AND TERMINAL CLAMP.
- 0 - CABLE TERMINAL WITH INSULATING BRACKET & DISCONNECTOR WITH M12 STUD, 2 NUTS, LOCKWASHER, FLAT WASHER AND TERMINAL CLAMP.
- NAMEPLATE
- 0 - STANDARD ANSI ONLY

HORIZONTAL 3Ø INSTALLATION LAYOUT



FOR TENDER PURPOSES ONLY

FIGURE 1

FIGURE 2

FIGURE 3

ALL DIMENSIONS IN INCH UNLESS NOTED

ABB INC  
 Building 2018 Avenue B, Yonkers, NY 10587  
 USA

EXTRA CREEP  
 POLIM-D SURGE ARRESTER  
 ZIRY BOUTLINE

ABB INC  
 Building 2018 Avenue B, Yonkers, NY 10587  
 USA

SCALE: 1:1

DATE: 04/10/24

REV: 1

4F1024

1

REV. DESCRIPTION & DATE

01 DEC. '28, 2007