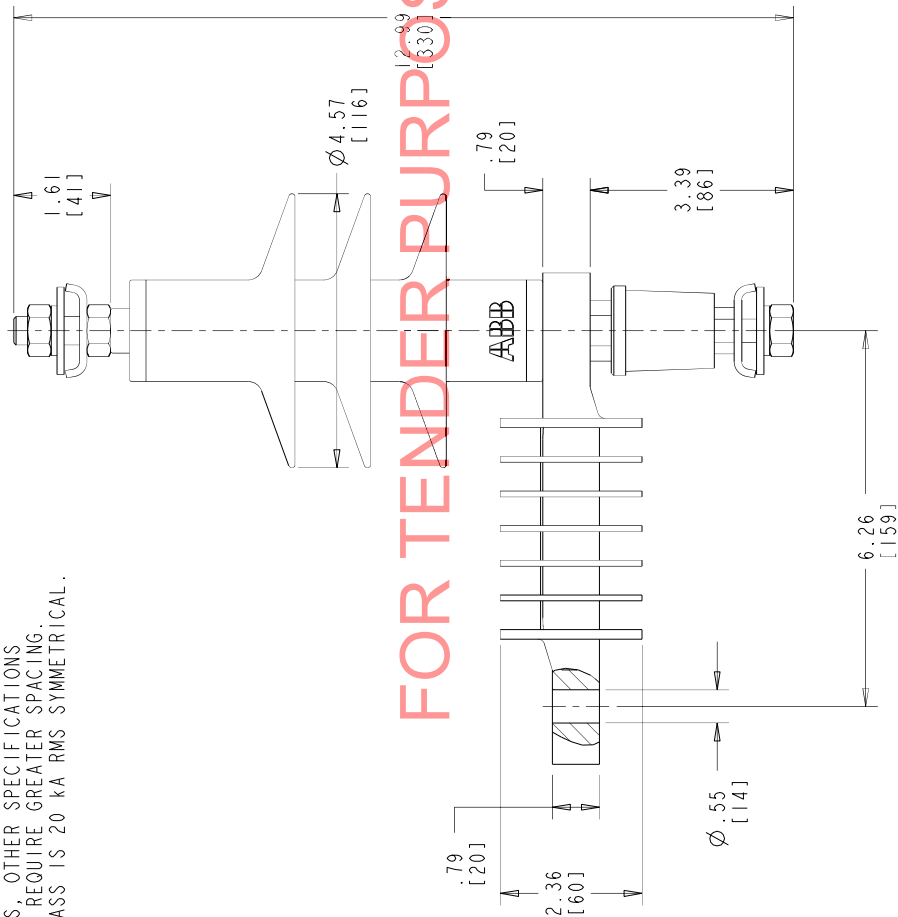


DRW 4F1032

STYLE NO.	DUTY CYCLE kv	MCOV kvrms	CREEPAGE		LBS	KG	PH TO GRD.		PH TO PH	
			IN	MM			IN	MM	IN	MM
U010SA008B1E00	10	8.40	12.04	306	3.08	1.4	5.00	127	6.06	154

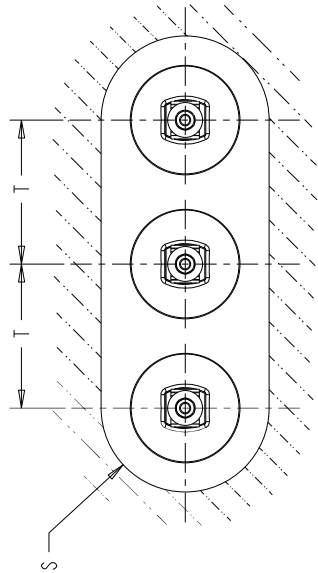
NOTES:

1. INCREASE CLEARANCES "S" & "T" 3% PER 1,000 FT. [304.8 m] OVER 6,000 FT. [1828.8 m]
2. ARRESTER ASSEMBLY CONSISTS OF ARRESTER UNIT, LINE & GROUND TERMINALS.
3. MINIMUM DIMENSIONS FOR ARRESTERS, OTHER APPARATUS STANDARDS, OTHER SPECIFICATIONS OR LOCAL CODES MAY REQUIRE GREATER SPACING.
4. PRESSURE RELIEF CLASS IS 20 KA RMS SYMMETRICAL.



FOR TENDER PURPOSES ONLY

HORIZONTAL LIMIT FOR GROUNDED OBJECTS



HORIZONTAL 3Ø INSTALLATION LAYOUT

ALL DIMENSIONS IN INCHES [MM] UNLESS NOTED

This drawing is the property of ABB INC. and contains proprietary and confidential information which must not be duplicated, used or disclosed other than expressly authorized by ABB INC.

XPI-III ARRESTER (E00)
10 KV OUTLINE

ABB

ABB INC.
Power Products Division
100 Distribution Circle, Mt. Pleasant, PA 15666

CAD DRW PRDZC W/ID/FIRE 2.0

SCALE 0:33

ASSY. DWG.

OWN KRYGOWSKI

DRW DJK

APP DJK

SHEET 1 OF 1

4F1032

REV. 2

01	NOV. 15, 2010	12.99 REF WAS 12.39 REF	DJK	02	MARCH 5, 2012
----	---------------	-------------------------	-----	----	---------------

REV. DESCRIPTION & DATE

PRO.e-bdr-c