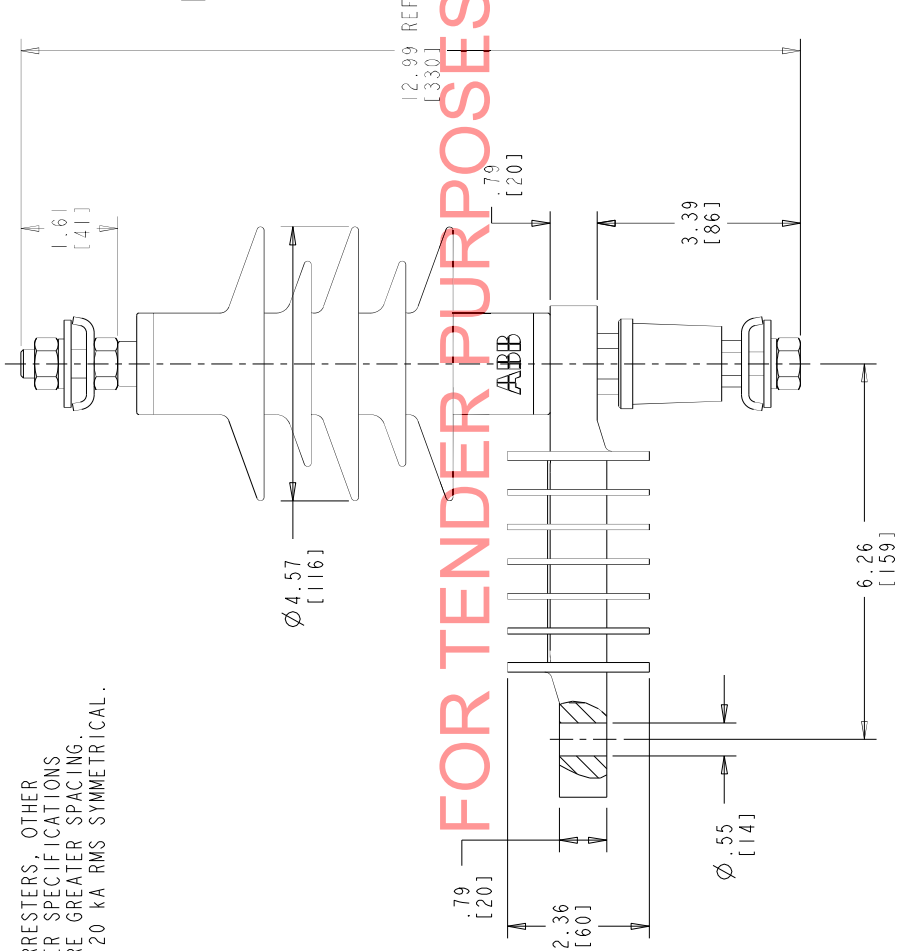


REV. DESCRIPTION & DATE

STYLE NO.	DUTY CYCLE kv	MCOV kvrms	CREEPAGE		LBS	KG	S		PH TO PH IN	PH TO PH MM
			IN	MM			IN	MM		
U015SB012B1E00	15	12.7	18.11	460	7.0	3.2	8.86	225	9.45	240

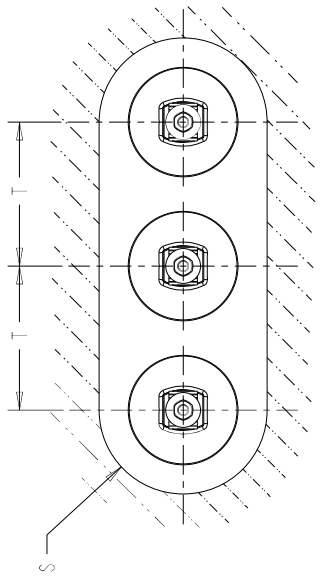
**NOTES:**

1. INCREASE CLEARANCES "S" & "T" 3% PER 1,000 FT. [304.8 m] OVER 6,000 FT. [1828.8 m]
2. ARRESTER ASSEMBLY CONSISTS OF ARRESTER UNIT, LINE & GROUND TERMINALS.
3. MINIMUM DIMENSIONS FOR ARRESTERS, OTHER APPARATUS STANDARDS, OTHER SPECIFICATIONS OR LOCAL CODES MAY REQUIRE GREATER SPACING.
4. PRESSURE RELIEF CLASS IS 20 KA RMS SYMMETRICAL.



FOR TENDER PURPOSES ONLY

HORIZONTAL LIMIT FOR GROUNDED OBJECTS



**HORIZONTAL 3Ø INSTALLATION LAYOUT**

**ABB** Inc. Power Products Division  
100 Distribution Circle, Mt. Pleasant, PA 15666

XPI-III ARRESTER (E00)  
15 KV OUTLINE

SCALE 0:33

ASSY. DWG. DRW. BY: KRYGOWSKI

APP. BY: JPK

SHEET 1 OF 1

REV. 1

4F1043

PRO.e-bdr-c

ALL DIMENSIONS IN INCHES [MM] UNLESS NOTED

This drawing is the property of ABB INC. and contains proprietary and confidential information which must not be duplicated, used or disclosed other than expressly authorized by ABB INC.