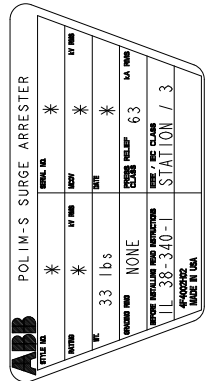
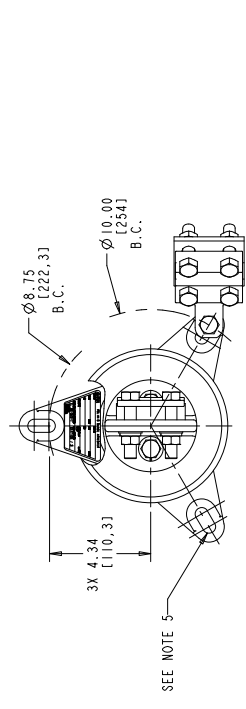
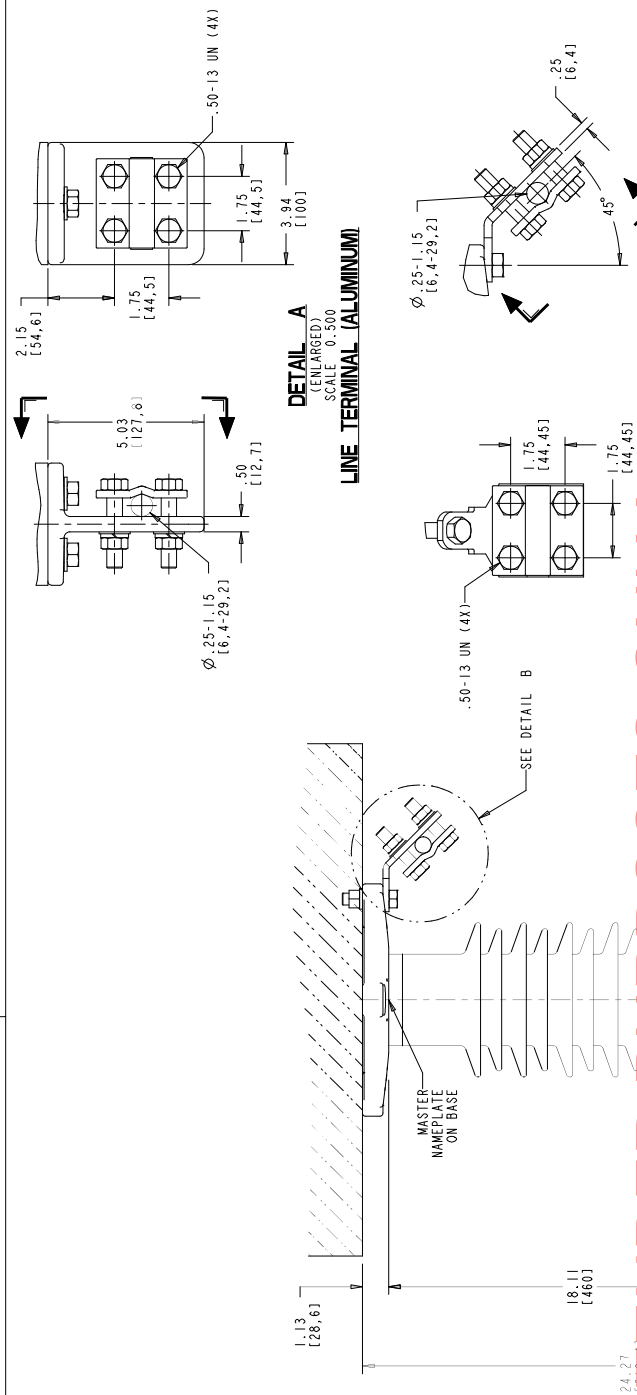


| STYLE NO. | RATINGS (kv rms) | | TOV (kv rms) | MAXIMUM RESIDUAL VOLTAGE WITH CURRENT WAVE (kv PEAK) | | | | |
|-------------|------------------|-------------------|-----------------|--|------------|------|-------|-------|
| | V _r | V _{mcoV} | | SPL (SIPL) | LPL (LIPL) | | | |
| | | STANDARD CREEP | | FOW | | | | |
| | | 500 A | | 0.5 μs | | | | |
| | | 10 kA | | 20 kA | | | | |
| | | 10 kA | | 10 kA | | | | |
| 0024S4019AH | 24 | 19.5 | 010 sec = 26.3 | 47.7 | 53.5 | 57.6 | 63.9 | 63.0 |
| 0027S4022AH | 27 | 22.0 | 010 sec = 29.6 | 53.5 | 60.1 | 64.8 | 71.8 | 70.8 |
| 0030S4024AH | 30 | 24.4 | 010 sec = 32.9 | 59.5 | 66.7 | 72.0 | 79.7 | 78.6 |
| 0033S4027AH | 33 | 27.0 | 010 sec = 36.1 | 65.4 | 73.4 | 79.2 | 87.6 | 86.4 |
| 0036S4029AH | 36 | 29.0 | 010 sec = 39.4 | 71.3 | 80.0 | 86.4 | 95.5 | 94.2 |
| 0039S4031BH | 39 | 31.5 | 010 sec = 42.7 | 77.3 | 86.6 | 93.6 | 103 | 102 |
| 0042S4034BH | 42 | 34.0 | 010 sec = 46.0 | 83.3 | 93.4 | 101 | 112 | 110 |
| EXTRA CREEP | | | | | | | | |
| 0003SC002AH | 3 | 2.55 | 010 sec = 4.93 | 9.77 | 10.9 | 11.3 | 12.9 | 12.8 |
| 0004SC003AH | 4 | 3.40 | 010 sec = 6.57 | 13.0 | 14.7 | 15.6 | 18.3 | 18.1 |
| 0005SC004AH | 5 | 4.25 | 010 sec = 8.12 | 16.3 | 18.7 | 19.8 | 23.6 | 23.4 |
| 0006SC005AH | 6 | 5.10 | 010 sec = 9.67 | 19.6 | 22.6 | 24.0 | 29.6 | 29.4 |
| 0007SC006AH | 7 | 5.95 | 010 sec = 11.22 | 22.9 | 26.4 | 27.8 | 34.6 | 34.4 |
| 0008SC007AH | 8 | 6.80 | 010 sec = 12.77 | 26.2 | 30.2 | 32.2 | 40.6 | 40.4 |
| 0009SC008BH | 9 | 7.65 | 010 sec = 14.32 | 29.5 | 34.0 | 36.4 | 46.6 | 46.4 |
| 0010SC009BH | 10 | 8.40 | 010 sec = 15.87 | 32.8 | 37.8 | 40.4 | 52.6 | 52.4 |
| 0012S8012AH | 12 | 10.2 | 010 sec = 18.8 | 39.6 | 45.6 | 49.2 | 62.6 | 62.4 |
| 0015S8015AH | 15 | 12.7 | 010 sec = 22.8 | 48.4 | 56.4 | 60.4 | 78.6 | 78.4 |
| 0018S8018AH | 18 | 15.3 | 010 sec = 26.8 | 57.2 | 67.2 | 72.4 | 94.6 | 94.4 |
| 0021S8017BH | 21 | 17.0 | 010 sec = 29.3 | 64.1 | 75.2 | 80.4 | 106.6 | 106.4 |



MASTER NAMEPLATE
 * ASSIGNED AT THE TIME OF PRODUCTION AND RECORDED IN THE PROPER LOCATIONS

FOR TENDER PURPOSES ONLY



DRILLING PLAN

ALL DIMENSIONS IN INCHES [MM] UNLESS NOTED

ABB INC.
 Power Products Division
 500 Distribution Circle, Mt. Pleasant, PA 15666

POLIM-S IEEE STATION / IEC CLASS 3
 POLYMER ARRESTER (UNDERHUNG)
 12V SHED HOUSING OUTLINE

ABB INC.
 Power Products Division
 500 Distribution Circle, Mt. Pleasant, PA 15666

SCALE: DRAWING 2:2

DATE: 08/11/11

REV: 1 OF 1

4F 4006

5

4F4006

- NOTES:
- FOR MINIMUM PHASE-TO-GROUND AND PHASE-TO-PHASE CLEARANCES WITH TYPE POLIM-S SURGE ARRESTERS, REFER TO THE POLIM-S PRODUCT BULLETIN (26NM110077). OTHER APPARATUS STANDARDS, OTHER SPECIFICATIONS OR LOCAL CODES MAY SUPERCEDE DISTANCES SPECIFIED.
 - ARRESTER ASSEMBLY CONSISTS OF ARRESTER UNIT, LINE & GROUND TERMINAL CLAMP, ACCOMMODATE CUI OR AL CABLE.
 - SIZE NO. 2 TO 1000 MCM (25 [6.4] TO 1.15 [29.2]) DIA. OR ROTATED 90° AS REQUIRED.
 - LINE & GROUND TERMINAL CLAMP CAN BE MOUNTED AS SHOWN.
 - MTG. SLOTS FOR .50 INCH HARDWARE (3) EQUALLY SPACED, THICKNESS OF LUG = .88 [22.4]
 - DESIGNED FOR VERTICAL OR HORIZONTAL MOUNT.
 - MAX. CANTILEVER LOAD 20,000 in-lbs [2260 Nm].
 - PRESSURE RELIEF CLASS IS 63 KA RMS SYMMETRICAL.
 - NOMINAL CREEPAGE DISTANCE 42.2 [1073].
 - MAXIMUM ARRESTER WEIGHT 33.0 lbs [15.0 kg].

REV, DESCRIPTION & DATE

| | | |
|----|------------------|--|
| 01 | MARCH 1, 2010 | MAXIMUM RESIDUAL VOLTAGE WITH CURRENT WAVE (KV PEAK) |
| 02 | JULY 26, 2011 | FORMATTING CHANGES |
| 03 | AUGUST 1, 2011 | ADDED TO PRODUCT BULLETIN |
| 04 | JULY 12, 2013 | ADDED TO PRODUCT BULLETIN |
| 05 | OCTOBER 25, 2013 | ADDED TO PRODUCT BULLETIN |