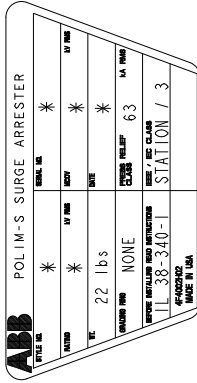


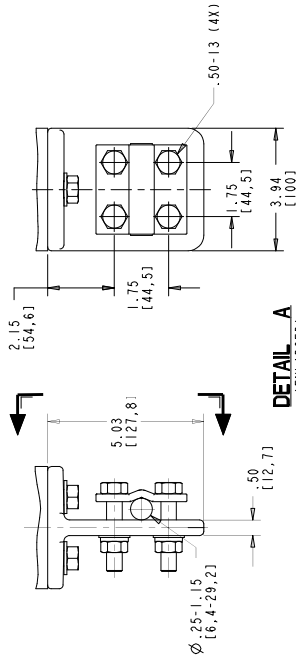
STYLE NO.	RATINGS		TOV		MAXIMUM RESIDUAL VOLTAGE WITH CURRENT WAVE (KV PEAK)			
	(KV rms)	(KV rms)	(KV rms)	(KV rms)	(KV rms)	(KV rms)	(KV rms)	(KV rms)
	V _r	V _{COV}	V _{COV}	V _{COV}	500 A	10 KA	20 KA	10 KA
					STANDARD CREEP			
					10 sec	10 sec	10 sec	10 sec
					EXTRA CREEP			
					10 sec	10 sec	10 sec	10 sec
00125A010AH	12	10.2	10.2	10.2	13.1	25.1	28.1	30.0
00155A012AH	15	12.7	12.7	12.7	16.4	31.3	35.0	37.5
00185A015AH	18	15.3	15.3	15.3	19.7	37.4	41.9	45.0
00215A017AH	21	17.0	17.0	17.0	23.0	41.8	46.9	50.4
00035B002AH	3	2.55	2.55	2.55	4.93	9.77	10.9	11.3
00045B003AH	4	3.40	3.40	3.40	6.93	10.0	11.2	11.6
00055B004AH	5	4.25	4.25	4.25	8.93	12.3	13.7	14.4
00065B005AH	6	5.10	5.10	5.10	10.93	12.8	14.3	15.0
00075B006AH	7	5.95	5.95	5.95	12.86	17.7	19.8	21.0
00085B007AH	8	6.80	6.80	6.80	14.86	18.5	20.7	22.0
00095B008AH	9	7.65	7.65	7.65	16.86	19.0	21.3	22.6
00105B008BH	10	8.40	8.40	8.40	18.86	21.0	23.5	25.0
00115B008BH	10	8.40	8.40	8.40	21.0	21.0	23.5	25.0



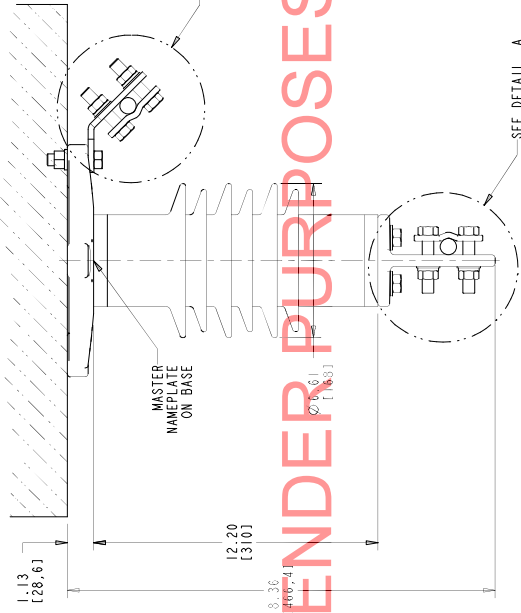
* ASSIGNED AT THE TIME OF PRODUCTION AND RECORDED IN THE PROPER LOCATIONS

NOTES:
 1. FOR MINIMUM PHASE-TO-GROUND AND PHASE-TO-PHASE CLEARANCES WITH TYPE POLIM-S SURGE ARRESTERS, REFER TO THE POLIM-S PRODUCT BULLETIN (26NM10077). OTHER APPARATUS STANDARDS, OTHER SPECIFICATIONS OR LOCAL CODES MAY SUPERSEDE DISTANCES SPECIFIED.
 2. ARRESTER ASSEMBLY CONSISTS OF ARRESTER UNIT, LINE & GROUND TERMINALS WITH CLAMPS AND 5/8 INCH HARDWARE.
 3. THE GROUND TERMINALS CAN BE LOCATED ON EITHER SIDE. CABLE SIZE NO.2 TO 1000 MCM (6.25 TO 16.15 [29.2] DIA.).
 4. LINE & GROUND TERMINAL CLAMP CAN BE MOUNTED AS SHOWN, OR ROTATED 90° AS REQUIRED.
 5. MTG. SLOTS FOR .50 INCH HARDWARE (3) EQUALLY SPACED, THICKNESS OF LUG = .88 [22.4]
 6. DESIGNED FOR VERTICAL OR HORIZONTAL MOUNT.
 7. MAX CANTILEVER LOAD 20,000 in-lbs [2260 Nm].
 8. PRESSURE RELIEF CLASS IS 63 KA RMS SYMMETRICAL.
 9. NOMINAL CREEPAGE DISTANCE 23.7 [601].
 10. MAXIMUM ARRESTER WEIGHT 22.0 lbs [10.0 kg].

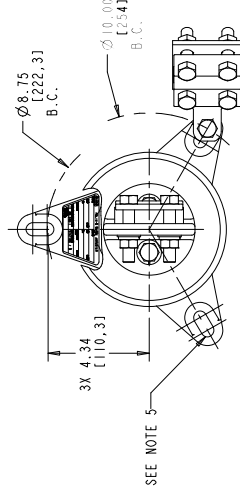
FOR TENDER PURPOSES ONLY



DETAIL A (ENLARGED) SCALE 0.500 LINE TERMINAL (ALUMINUM)



DETAIL B (ENLARGED) SCALE 0.500 GROUND TERMINAL (GALVANIZED) (CAN BE ATTACHED TO ANY LUG)



DRILLING PLAN

ALL DIMENSIONS IN INCHES (MM) UNLESS NOTED	
POLIM-S IEEE STATION / IEC CLASS 3 POLYMER ARRESTER (UNDERHUNG) 6 SHED HOUSING (OUTLINE)	
ABB INC. Power Product Division 500 Distribution Circle, Ft. Peck, PA 15066	
SCALE: DRAWING: 1:1	REV: 1 OF 1
DATE: 07/26/2011	4F 4007
BY: [signature]	4
CHECKED: [signature]	4

01	03	04
01 MARCH 1, 2010	03 OCTOBER 25, 2013	04 JULY 21, 2015
STYLE 00215A017AH: UPDATED	NOTE 9: CREEPAGE 22.7	NOTE 9: 23.7 WAS 22.7
CHANGE TOV COLUMN HEADER	NOTE 10: RENEWED	DRILLING PLAN RELOCATED
REVISION NUMBER	NOTE 8: CREEPAGE 22.7	DRILLING PLAN RELOCATED
REVISION NUMBER	NOTE 9: CREEPAGE 22.7	DRILLING PLAN RELOCATED
REVISION NUMBER	NOTE 10: RENEWED	DRILLING PLAN RELOCATED
REVISION NUMBER	NOTE 11: RENEWED	DRILLING PLAN RELOCATED
REVISION NUMBER	NOTE 12: RENEWED	DRILLING PLAN RELOCATED
REVISION NUMBER	NOTE 13: RENEWED	DRILLING PLAN RELOCATED
REVISION NUMBER	NOTE 14: RENEWED	DRILLING PLAN RELOCATED
REVISION NUMBER	NOTE 15: RENEWED	DRILLING PLAN RELOCATED
REVISION NUMBER	NOTE 16: RENEWED	DRILLING PLAN RELOCATED
REVISION NUMBER	NOTE 17: RENEWED	DRILLING PLAN RELOCATED
REVISION NUMBER	NOTE 18: RENEWED	DRILLING PLAN RELOCATED
REVISION NUMBER	NOTE 19: RENEWED	DRILLING PLAN RELOCATED
REVISION NUMBER	NOTE 20: RENEWED	DRILLING PLAN RELOCATED
REVISION NUMBER	NOTE 21: RENEWED	DRILLING PLAN RELOCATED
REVISION NUMBER	NOTE 22: RENEWED	DRILLING PLAN RELOCATED
REVISION NUMBER	NOTE 23: RENEWED	DRILLING PLAN RELOCATED
REVISION NUMBER	NOTE 24: RENEWED	DRILLING PLAN RELOCATED
REVISION NUMBER	NOTE 25: RENEWED	DRILLING PLAN RELOCATED
REVISION NUMBER	NOTE 26: RENEWED	DRILLING PLAN RELOCATED
REVISION NUMBER	NOTE 27: RENEWED	DRILLING PLAN RELOCATED
REVISION NUMBER	NOTE 28: RENEWED	DRILLING PLAN RELOCATED
REVISION NUMBER	NOTE 29: RENEWED	DRILLING PLAN RELOCATED
REVISION NUMBER	NOTE 30: RENEWED	DRILLING PLAN RELOCATED
REVISION NUMBER	NOTE 31: RENEWED	DRILLING PLAN RELOCATED
REVISION NUMBER	NOTE 32: RENEWED	DRILLING PLAN RELOCATED
REVISION NUMBER	NOTE 33: RENEWED	DRILLING PLAN RELOCATED
REVISION NUMBER	NOTE 34: RENEWED	DRILLING PLAN RELOCATED
REVISION NUMBER	NOTE 35: RENEWED	DRILLING PLAN RELOCATED
REVISION NUMBER	NOTE 36: RENEWED	DRILLING PLAN RELOCATED
REVISION NUMBER	NOTE 37: RENEWED	DRILLING PLAN RELOCATED
REVISION NUMBER	NOTE 38: RENEWED	DRILLING PLAN RELOCATED
REVISION NUMBER	NOTE 39: RENEWED	DRILLING PLAN RELOCATED
REVISION NUMBER	NOTE 40: RENEWED	DRILLING PLAN RELOCATED
REVISION NUMBER	NOTE 41: RENEWED	DRILLING PLAN RELOCATED
REVISION NUMBER	NOTE 42: RENEWED	DRILLING PLAN RELOCATED
REVISION NUMBER	NOTE 43: RENEWED	DRILLING PLAN RELOCATED
REVISION NUMBER	NOTE 44: RENEWED	DRILLING PLAN RELOCATED
REVISION NUMBER	NOTE 45: RENEWED	DRILLING PLAN RELOCATED
REVISION NUMBER	NOTE 46: RENEWED	DRILLING PLAN RELOCATED
REVISION NUMBER	NOTE 47: RENEWED	DRILLING PLAN RELOCATED
REVISION NUMBER	NOTE 48: RENEWED	DRILLING PLAN RELOCATED
REVISION NUMBER	NOTE 49: RENEWED	DRILLING PLAN RELOCATED
REVISION NUMBER	NOTE 50: RENEWED	DRILLING PLAN RELOCATED
REVISION NUMBER	NOTE 51: RENEWED	DRILLING PLAN RELOCATED
REVISION NUMBER	NOTE 52: RENEWED	DRILLING PLAN RELOCATED
REVISION NUMBER	NOTE 53: RENEWED	DRILLING PLAN RELOCATED
REVISION NUMBER	NOTE 54: RENEWED	DRILLING PLAN RELOCATED
REVISION NUMBER	NOTE 55: RENEWED	DRILLING PLAN RELOCATED
REVISION NUMBER	NOTE 56: RENEWED	DRILLING PLAN RELOCATED
REVISION NUMBER	NOTE 57: RENEWED	DRILLING PLAN RELOCATED
REVISION NUMBER	NOTE 58: RENEWED	DRILLING PLAN RELOCATED
REVISION NUMBER	NOTE 59: RENEWED	DRILLING PLAN RELOCATED
REVISION NUMBER	NOTE 60: RENEWED	DRILLING PLAN RELOCATED
REVISION NUMBER	NOTE 61: RENEWED	DRILLING PLAN RELOCATED
REVISION NUMBER	NOTE 62: RENEWED	DRILLING PLAN RELOCATED
REVISION NUMBER	NOTE 63: RENEWED	DRILLING PLAN RELOCATED
REVISION NUMBER	NOTE 64: RENEWED	DRILLING PLAN RELOCATED
REVISION NUMBER	NOTE 65: RENEWED	DRILLING PLAN RELOCATED
REVISION NUMBER	NOTE 66: RENEWED	DRILLING PLAN RELOCATED
REVISION NUMBER	NOTE 67: RENEWED	DRILLING PLAN RELOCATED
REVISION NUMBER	NOTE 68: RENEWED	DRILLING PLAN RELOCATED
REVISION NUMBER	NOTE 69: RENEWED	DRILLING PLAN RELOCATED
REVISION NUMBER	NOTE 70: RENEWED	DRILLING PLAN RELOCATED
REVISION NUMBER	NOTE 71: RENEWED	DRILLING PLAN RELOCATED
REVISION NUMBER	NOTE 72: RENEWED	DRILLING PLAN RELOCATED
REVISION NUMBER	NOTE 73: RENEWED	DRILLING PLAN RELOCATED
REVISION NUMBER	NOTE 74: RENEWED	DRILLING PLAN RELOCATED
REVISION NUMBER	NOTE 75: RENEWED	DRILLING PLAN RELOCATED
REVISION NUMBER	NOTE 76: RENEWED	DRILLING PLAN RELOCATED
REVISION NUMBER	NOTE 77: RENEWED	DRILLING PLAN RELOCATED
REVISION NUMBER	NOTE 78: RENEWED	DRILLING PLAN RELOCATED
REVISION NUMBER	NOTE 79: RENEWED	DRILLING PLAN RELOCATED
REVISION NUMBER	NOTE 80: RENEWED	DRILLING PLAN RELOCATED
REVISION NUMBER	NOTE 81: RENEWED	DRILLING PLAN RELOCATED
REVISION NUMBER	NOTE 82: RENEWED	DRILLING PLAN RELOCATED
REVISION NUMBER	NOTE 83: RENEWED	DRILLING PLAN RELOCATED
REVISION NUMBER	NOTE 84: RENEWED	DRILLING PLAN RELOCATED
REVISION NUMBER	NOTE 85: RENEWED	DRILLING PLAN RELOCATED
REVISION NUMBER	NOTE 86: RENEWED	DRILLING PLAN RELOCATED
REVISION NUMBER	NOTE 87: RENEWED	DRILLING PLAN RELOCATED
REVISION NUMBER	NOTE 88: RENEWED	DRILLING PLAN RELOCATED
REVISION NUMBER	NOTE 89: RENEWED	DRILLING PLAN RELOCATED
REVISION NUMBER	NOTE 90: RENEWED	DRILLING PLAN RELOCATED
REVISION NUMBER	NOTE 91: RENEWED	DRILLING PLAN RELOCATED
REVISION NUMBER	NOTE 92: RENEWED	DRILLING PLAN RELOCATED
REVISION NUMBER	NOTE 93: RENEWED	DRILLING PLAN RELOCATED
REVISION NUMBER	NOTE 94: RENEWED	DRILLING PLAN RELOCATED
REVISION NUMBER	NOTE 95: RENEWED	DRILLING PLAN RELOCATED
REVISION NUMBER	NOTE 96: RENEWED	DRILLING PLAN RELOCATED
REVISION NUMBER	NOTE 97: RENEWED	DRILLING PLAN RELOCATED
REVISION NUMBER	NOTE 98: RENEWED	DRILLING PLAN RELOCATED
REVISION NUMBER	NOTE 99: RENEWED	DRILLING PLAN RELOCATED
REVISION NUMBER	NOTE 100: RENEWED	DRILLING PLAN RELOCATED