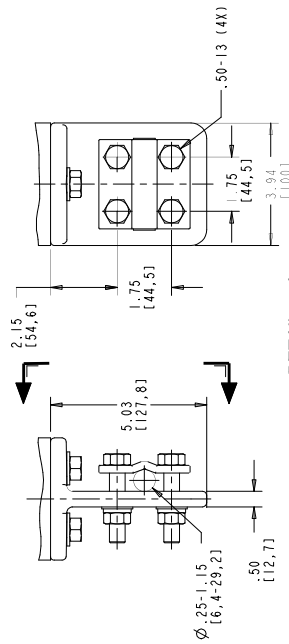


STYLE NO.	RATINGS (kV rms)		TOV (kV rms)		MAXIMUM RESIDUAL VOLTAGE WITH CURRENT WAVE (kV PEAK)				
	V _r	MCOV V _{mcovr}	WITH PRIOR ENERGY SINGLE IMPULSE OF 4.5 kJ/AVr	STANDARD CREEP	SPL (S1PL) 8/20 μs	LPL (L1PL) 30/60 μs	10 kA 20 kA	10 kA 1.0 kA	FW 0.5 μs
0003S4002AH	3	2.55	010 sec = 4.93	9.77	10.9	11.3	12.9	12.8	
0004S4003AH	4	3.40	010 sec = 4.93	10.0	11.2	11.6	13.3	13.1	
0005S4004AH	5	4.25	010 sec = 6.57	12.3	13.7	14.4	16.3	16.1	
0006S4005AH	6	5.10	010 sec = 6.57	12.8	14.3	15.0	17.0	16.8	
0007S4006AH	7	5.95	010 sec = 9.86	17.7	19.8	21.0	23.6	23.3	
0008S4007AH	8	6.80	010 sec = 9.86	18.5	20.7	22.0	24.7	24.4	
0009S4008AH	9	7.65	010 sec = 9.86	19.0	21.3	22.6	25.4	25.0	
0010S4009AH	10	8.40	010 sec = 11.0	21.0	23.5	25.0	28.0	27.6	

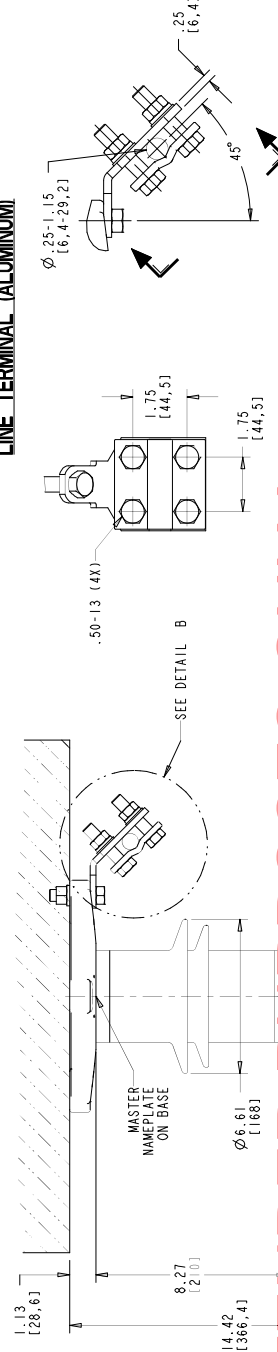
ABB			
POLIM-S SURGE ARRESTER			
TYPE NO.	18 lbs	DATE	63
WEIGHT	NONE	DATE	1/3
TYPE OF INSULATION	IL 38-340-1	STATION	1/3
MADE IN USA			

* ASSIGNED AT THE TIME OF PRODUCTION AND RECORDED IN THE PROPER LOCATIONS

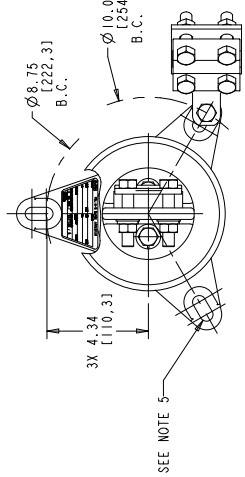
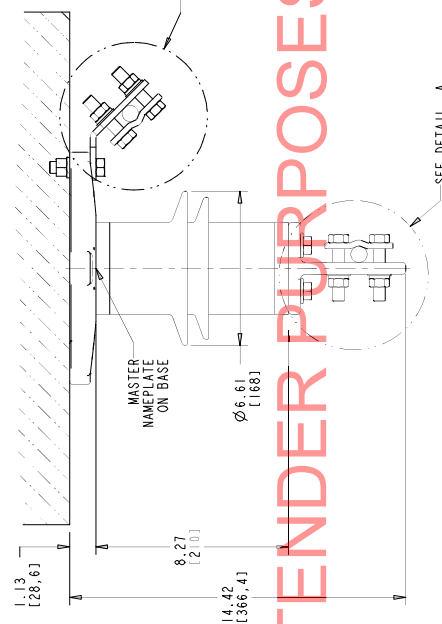
FOR TENDER PURPOSES ONLY



DETAIL A
(ENLARGED)
SCALE 0.500
LINE TERMINAL (ALUMINUM)



DETAIL B
(ENLARGED)
SCALE 0.500
GROUND TERMINAL (GALVANIZED)
(CAN BE ATTACHED TO ANY LUG)



DRILLING PLAN

- NOTES:**
- FOR MINIMUM PHASE-TO-GROUND AND PHASE-TO-PHASE CLEARANCES, THE POLIM-S SURGE ARRESTERS (0077), OTHER APPARATUS STANDARDS, OTHER SPECIFICATIONS OR LOCAL CODES MAY SUPERCEDE DISTANCES SPECIFIED.
 - ARRESTER ASSEMBLY CONSISTS OF ARRESTER UNIT, LINE & GROUND TERMINALS WITH CLAMPS, AND .50 INCH HARDWARE.
 - LINE & GROUND TERMINALS CAN ACCOMMODATE CU OR AL CABLE. SIZE NO. 2 TO 1000 MCM (.25 [6.4] TO 1.15 [29.2] DIA.).
 - LINE & GROUND TERMINAL CLAMP CAN BE MOUNTED AS SHOWN OR ROTATED 90° AS REQUIRED.
 - MIG. SLOTS FOR .50 INCH HARDWARE (3) EQUALLY SPACED; THICKNESS OF LUG .89 [22.4] INCH.
 - MAX. CANTILEVER LOAD 9000 [2260 N].
 - PRESSURE RELIEF CLASS IS 63 KA RMS SYMMETRICAL.
 - NOMINAL CREEPAGE DISTANCE 11.3 [287].
 - MAXIMUM ARRESTER WEIGHT 18.0 lbs (8.2 kg).

ALL DIMENSIONS IN INCHES [MM] UNLESS NOTED	
POLIM-S IEEE STATION / IEC CLASS 3 POLYMER ARRESTER (UNDERHUNG) Z SHED HOUSING OUTLINE	
ABB INC. Power Products Division 500 Distribution Circle, W. Pittsburg, PA 15066	
SCALE: DRAWING: 2:2	SHEET 1 OF 1
DATE: 04/06/2011	4F 4008
REV: 0	4

01	MARCH 1, 2010	CHART TYPING COLUMN HEADER
02	JULY 26, 2011	"CALMIN" ADDED TO LINE TERMINAL CALLOUT
03	OCTOBER 28, 2013	GROUND TERMINAL BULLETIN NUMBER ADDED
04	JULY 21, 2015	FORMATTING BLOCK ADDRESS UPDATED
05	OCTOBER 28, 2013	DETAIL B - ZS ADDED
06	JULY 26, 2011	DETAIL B - ZS ADDED
07	JULY 26, 2011	DETAIL B - ZS ADDED
08	JULY 26, 2011	DETAIL B - ZS ADDED
09	JULY 26, 2011	DETAIL B - ZS ADDED
10	JULY 26, 2011	DETAIL B - ZS ADDED
11	JULY 26, 2011	DETAIL B - ZS ADDED
12	JULY 26, 2011	DETAIL B - ZS ADDED
13	JULY 26, 2011	DETAIL B - ZS ADDED
14	JULY 26, 2011	DETAIL B - ZS ADDED
15	JULY 26, 2011	DETAIL B - ZS ADDED
16	JULY 26, 2011	DETAIL B - ZS ADDED
17	JULY 26, 2011	DETAIL B - ZS ADDED
18	JULY 26, 2011	DETAIL B - ZS ADDED
19	JULY 26, 2011	DETAIL B - ZS ADDED
20	JULY 26, 2011	DETAIL B - ZS ADDED
21	JULY 26, 2011	DETAIL B - ZS ADDED
22	JULY 26, 2011	DETAIL B - ZS ADDED
23	JULY 26, 2011	DETAIL B - ZS ADDED
24	JULY 26, 2011	DETAIL B - ZS ADDED
25	JULY 26, 2011	DETAIL B - ZS ADDED
26	JULY 26, 2011	DETAIL B - ZS ADDED
27	JULY 26, 2011	DETAIL B - ZS ADDED
28	JULY 26, 2011	DETAIL B - ZS ADDED
29	JULY 26, 2011	DETAIL B - ZS ADDED
30	JULY 26, 2011	DETAIL B - ZS ADDED
31	JULY 26, 2011	DETAIL B - ZS ADDED
32	JULY 26, 2011	DETAIL B - ZS ADDED
33	JULY 26, 2011	DETAIL B - ZS ADDED
34	JULY 26, 2011	DETAIL B - ZS ADDED
35	JULY 26, 2011	DETAIL B - ZS ADDED
36	JULY 26, 2011	DETAIL B - ZS ADDED
37	JULY 26, 2011	DETAIL B - ZS ADDED
38	JULY 26, 2011	DETAIL B - ZS ADDED
39	JULY 26, 2011	DETAIL B - ZS ADDED
40	JULY 26, 2011	DETAIL B - ZS ADDED
41	JULY 26, 2011	DETAIL B - ZS ADDED
42	JULY 26, 2011	DETAIL B - ZS ADDED
43	JULY 26, 2011	DETAIL B - ZS ADDED
44	JULY 26, 2011	DETAIL B - ZS ADDED
45	JULY 26, 2011	DETAIL B - ZS ADDED
46	JULY 26, 2011	DETAIL B - ZS ADDED
47	JULY 26, 2011	DETAIL B - ZS ADDED
48	JULY 26, 2011	DETAIL B - ZS ADDED
49	JULY 26, 2011	DETAIL B - ZS ADDED
50	JULY 26, 2011	DETAIL B - ZS ADDED
51	JULY 26, 2011	DETAIL B - ZS ADDED
52	JULY 26, 2011	DETAIL B - ZS ADDED
53	JULY 26, 2011	DETAIL B - ZS ADDED
54	JULY 26, 2011	DETAIL B - ZS ADDED
55	JULY 26, 2011	DETAIL B - ZS ADDED
56	JULY 26, 2011	DETAIL B - ZS ADDED
57	JULY 26, 2011	DETAIL B - ZS ADDED
58	JULY 26, 2011	DETAIL B - ZS ADDED
59	JULY 26, 2011	DETAIL B - ZS ADDED
60	JULY 26, 2011	DETAIL B - ZS ADDED
61	JULY 26, 2011	DETAIL B - ZS ADDED
62	JULY 26, 2011	DETAIL B - ZS ADDED
63	JULY 26, 2011	DETAIL B - ZS ADDED
64	JULY 26, 2011	DETAIL B - ZS ADDED
65	JULY 26, 2011	DETAIL B - ZS ADDED
66	JULY 26, 2011	DETAIL B - ZS ADDED
67	JULY 26, 2011	DETAIL B - ZS ADDED
68	JULY 26, 2011	DETAIL B - ZS ADDED
69	JULY 26, 2011	DETAIL B - ZS ADDED
70	JULY 26, 2011	DETAIL B - ZS ADDED
71	JULY 26, 2011	DETAIL B - ZS ADDED
72	JULY 26, 2011	DETAIL B - ZS ADDED
73	JULY 26, 2011	DETAIL B - ZS ADDED
74	JULY 26, 2011	DETAIL B - ZS ADDED
75	JULY 26, 2011	DETAIL B - ZS ADDED
76	JULY 26, 2011	DETAIL B - ZS ADDED
77	JULY 26, 2011	DETAIL B - ZS ADDED
78	JULY 26, 2011	DETAIL B - ZS ADDED
79	JULY 26, 2011	DETAIL B - ZS ADDED
80	JULY 26, 2011	DETAIL B - ZS ADDED
81	JULY 26, 2011	DETAIL B - ZS ADDED
82	JULY 26, 2011	DETAIL B - ZS ADDED
83	JULY 26, 2011	DETAIL B - ZS ADDED
84	JULY 26, 2011	DETAIL B - ZS ADDED
85	JULY 26, 2011	DETAIL B - ZS ADDED
86	JULY 26, 2011	DETAIL B - ZS ADDED
87	JULY 26, 2011	DETAIL B - ZS ADDED
88	JULY 26, 2011	DETAIL B - ZS ADDED
89	JULY 26, 2011	DETAIL B - ZS ADDED
90	JULY 26, 2011	DETAIL B - ZS ADDED
91	JULY 26, 2011	DETAIL B - ZS ADDED
92	JULY 26, 2011	DETAIL B - ZS ADDED
93	JULY 26, 2011	DETAIL B - ZS ADDED
94	JULY 26, 2011	DETAIL B - ZS ADDED
95	JULY 26, 2011	DETAIL B - ZS ADDED
96	JULY 26, 2011	DETAIL B - ZS ADDED
97	JULY 26, 2011	DETAIL B - ZS ADDED
98	JULY 26, 2011	DETAIL B - ZS ADDED
99	JULY 26, 2011	DETAIL B - ZS ADDED
100	JULY 26, 2011	DETAIL B - ZS ADDED