

STYLE NO.	RATINGS (kV rms)		TOV (kV rms)	MAXIMUM RESIDUAL VOLTAGE WITH CURRENT WAVE (kV PEAK)				
	V _r	MCOV V _{mcoV}		WITH PRIOR ENERGY SINGLE IMPULSE OF 4.5 kJ/kVr	SPL (SIPL) 30/60 μS	LPL (LIPL) 8/20 μS	FW FOW 0.5 μS	
STANDARD CREEP								
0024SA019ASAA6	24	19.5	010 sec = 26.3	47.7	53.5	57.6	63.9	63.0
0027SA022ASAA6	27	22.0	010 sec = 29.6	53.6	60.1	64.8	71.8	70.8
0030SA024ASAA6	30	24.4	010 sec = 32.9	59.5	66.7	72.0	79.7	78.6
0033SA027ASAA6	33	27.0	010 sec = 36.1	65.4	73.4	79.2	87.6	86.4
0036SA029ASAA6	36	29.0	010 sec = 39.4	71.3	80.0	86.4	95.5	94.2
0039SA031BSAA6	39	31.5	010 sec = 42.7	77.3	86.6	93.6	103	102
0042SA034BSAA6	42	34.0	010 sec = 46.0	83.3	93.4	101	112	110
EXTRA CREEP								
0003SC002ASAA6	3	2.55	010 sec = 4.93	9.77	10.9	11.3	12.9	12.8
0004SC003ASAA6	4	3.40	010 sec = 4.93	10.0	11.2	11.6	13.3	13.1
0005SC004ASAA6	5	4.25	010 sec = 6.57	12.3	13.7	14.4	16.3	16.1
0006SC005ASAA6	6	5.10	010 sec = 6.57	12.8	14.3	15.0	17.0	16.8
0007SC006ASAA6	7	5.95	010 sec = 9.86	17.7	19.8	21.0	23.6	23.3
0008SC007ASAA6	8	6.80	010 sec = 9.86	18.5	20.7	22.0	24.7	24.4
0009SC008BSAA6	9	7.65	010 sec = 9.86	19.0	21.3	22.6	25.4	25.0
0010SC008BSAA6	10	8.40	010 sec = 11.0	21.0	23.5	25.0	28.0	27.6
0012SB010ASAA6	12	10.2	010 sec = 13.1	25.1	28.1	30.0	33.5	33.1
0015SB012ASAA6	15	12.7	010 sec = 16.4	31.3	35.0	37.5	41.8	41.2
0018SB015ASAA6	18	15.3	010 sec = 19.7	37.4	41.9	45.0	50.0	49.3
0021SB017BSAA6	21	17.0	010 sec = 23.0	43.8	46.0	50.0	55.0	55.2

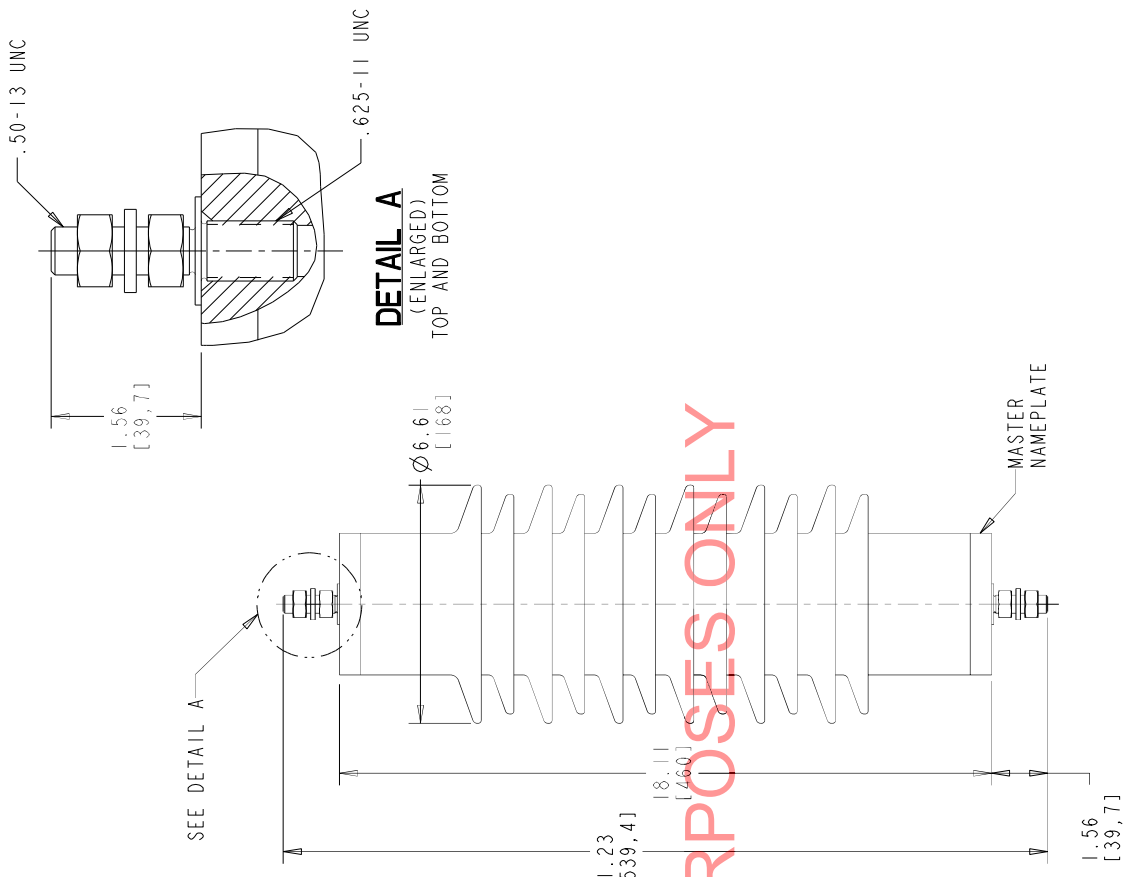
ABB	Style No.	POLIM-S		U.S.A.
	Weight 33 lbs	MCOV *	kV Rating *	kV

MASTER NAMEPLATE

* ASSIGNED AT THE TIME OF PRODUCTION AND RECORDED IN THE PROPER LOCATIONS

- NOTES:
- FOR MINIMUM PHASE-TO-GROUND AND PHASE-TO-PHASE CLEARANCES WITH TYPE POLIM-S SURGE ARRESTERS, REFER TO THE POLIM-S PRODUCT BULLETIN (2GNM10077). OTHER APPARATUS STANDARDS, OTHER SPECIFICATIONS OR LOCAL CODES MAY SUPERCEDE DISTANCES SPECIFIED.
 - ARRESTER ASSEMBLY CONSISTS OF ARRESTER UNIT, LINE & GROUND TERMINALS WITH .50 INCH HARDWARE.
 - DESIGNED FOR VERTICAL OR HORIZONTAL MOUNT.
 - MAX CANTILEVER LOAD 20,000 in-lbs [2260 Nm].
 - PRESSURE RELIEF CLASS IS 63 kA RMS SYMMETRICAL.
 - NOMINAL CREEPAGE DISTANCE 42.2 [1073].
 - MAXIMUM ARRESTER WEIGHT 33.0 lbs [15.0 kg].

01	MARCH 3, 2010	STYLE 0021SB017BSAA6 AND MAXIMUM RESIDUAL VOLTAGE CHART TOY COLUMN HEADER RECONFIGURED	02	JULY 26, 2011	ADDED STYLE NO. 0003SC002ASAA6, 0005SC004ASAA6, 0006SC005ASAA6, 0007SC006ASAA6, 0008SC007ASAA6, 0009SC008BSAA6, 0010SC008BSAA6, 0012SB010ASAA6, 0015SB012ASAA6, 0018SB015ASAA6
		NUMBER ADDED TOY COLUMN HEADER RECONFIGURED			
		FORMAT TITLE BLOCK ADDRESS UPDATED			
		NOTE 1: PRODUCT BULLETIN			
		NOTE 2: LOAD WAS STRENGTH			
		STYLE NO. 0021SB017BSAA6			
		WAS 0021SB017BSAA6			
		NOTE 6: CREEPAGE 42.2			
		NOTE 4: 0			
		04	JULY 12, 2013		
		05	OCTOBER 29, 2013		



ALL DIMENSIONS IN INCHES [MM] UNLESS NOTED

This drawing is the property of ABB INC. and contains proprietary and confidential information which must not be duplicated, used or disclosed other than expressly authorized by ABB INC.

POLIM-S IEEE STATION / IEC CLASS 3
POLYMER ARRESTER (CUBICAL)
12 SHED HOUSING OUTLINE

ABB Power Products Division
100 Distribution Center, Mt. Pleasant, PA 15666

CAD DRW PRDZ W/ID/FIRE 2.0
SCALE 0.20
ASSY. DWG.
DWN: KRYGOWSKI
CRD: DJK
APP: DJK

SHEET 1 OF 1
4F4009

REV. 5

PRO.e-bdr-c