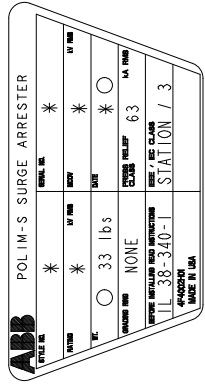


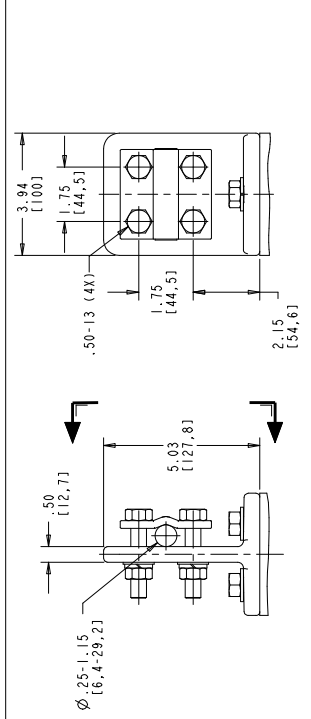
STYLE NO.	RATINGS (kV rms)		TOV (kV rms)	MAXIMUM RESIDUAL VOLTAGE WITH CURRENT WAVE (kV PEAK)			
	VOLTAJE V _r	MCOV V _{mcoV}		WITH PRIOR ENERGY SINGLE IMPULSE OF 30/60 μS	SPL (SIPL) LPL (LIPL) 8/20 μS	FW 0.5 μS	
			500 A	3 kA	10 kA	20 kA	10 kA
			STANDARD CREEP				
00245A019ASN	24	19.5	Ø10 sec ± 26.3	47.7	53.5	57.6	63.9
00275A022ASN	27	22.0	Ø10 sec ± 29.6	53.6	60.1	64.8	71.8
00305A024ASN	30	24.4	Ø10 sec ± 32.9	59.5	66.7	72.0	79.7
00335A027ASN	33	27.0	Ø10 sec ± 36.1	65.4	73.4	79.2	86.4
00365A029ASN	36	29.0	Ø10 sec ± 39.4	71.3	80.0	86.4	94.2
00395A031BSN	39	31.5	Ø10 sec ± 42.7	77.3	86.6	93.6	103
00425A034BSN	42	34.0	Ø10 sec ± 46.0	83.3	93.4	101	112
			EXTRA CREEP				
00035C002ASN	3	2.55	Ø10 sec ± 4.93	9.77	10.9	11.3	12.9
00045C003ASN	4	3.40	Ø10 sec ± 6.93	10.0	11.2	11.6	13.3
00055C004ASN	5	4.25	Ø10 sec ± 8.57	12.3	13.7	14.4	16.3
00065C005ASN	6	5.10	Ø10 sec ± 10.57	12.8	14.3	15.0	17.0
00075C006ASN	7	5.95	Ø10 sec ± 12.86	17.7	19.8	21.0	23.6
00085C007ASN	8	6.80	Ø10 sec ± 14.86	18.5	20.7	22.0	24.7
00095C008BSN	9	7.65	Ø10 sec ± 17.86	19.0	21.3	22.6	25.4
00105C009BSN	10	8.40	Ø10 sec ± 19.10	21.0	23.5	25.0	28.0
00125B010ASN	12	10.2	Ø10 sec ± 23.1	25.1	28.1	30.0	33.5
00155B012ASN	15	12.7	Ø10 sec ± 26.4	31.3	35.0	37.5	41.8
00185B015ASN	18	15.3	Ø10 sec ± 29.7	37.4	41.9	45.0	50.0
00215B017BSN	21	17.0	Ø10 sec ± 33.0	41.8	46.9	50.4	55.9



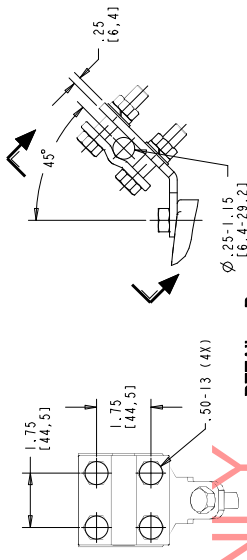
MASTER NAMEPLATE
 * ASSIGNED AT THE TIME OF PRODUCTION AND RECORDED IN THE PROPER LOCATIONS

- NOTES:**
- FOR MINIMUM PHASE-TO-GROUND AND PHASE-TO-PHASE CLEARANCES WITH TYPE POLIM-S SURGE ARRESTERS, REFER TO THE POLIM-S SURGE ARRESTER BULLETIN (Z0M1100077). LOCAL CODES MAY SUPERCEDE DISTANCES SPECIFIED.
 - ARRESTER ASSEMBLY CONSISTS OF ARRESTER UNIT, LINE & GROUND TERMINALS WITH CLAMPS, AND .50 INCH HARDWARE.
 - LINE & GROUND TERMINALS CAN ACCOMMODATE CU OR AL CABLE.
 - SIZE NO. 2 TO 1000 MCM (.25 [6.4] TO 1.15 [29.2] DIA.) LINE & GROUND TERMINAL CLAMP CAN BE MOUNTED AS SHOWN OR ROTATED 90° AS REQUIRED.
 - MTG. SLOTS FOR .50 INCH HARDWARE (3) EQUALLY SPACED; THICKNESS OF LUG = .88 [22.4].
 - DESIGNED FOR VERTICAL OR HORIZONTAL MOUNT.
 - OPERATING PRESSURE RELIEF CLASS IS 2500 PSI (172.60 N/m²).
 - PRESSURE RELIEF CLASS IS 63 kPa RMS SYMMETRICAL.
 - NOMINAL CREEPAGE DISTANCE 42.2 [1703].
 - MAXIMUM ARRESTER WEIGHT 33.0 lbs [15.0 kg].

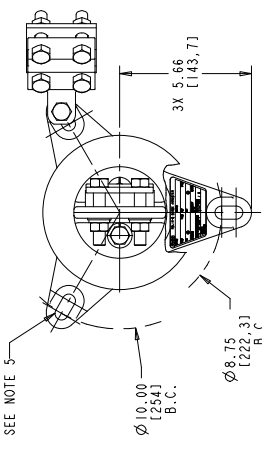
01	JULY 21, 2010	ADDRESS UPDATED
02	JULY 20, 2010	FORMATTING
03	AUGUST 1, 2011	STYLE NO. 00215B017BSN
04	JULY 12, 2013	MAS 00215B017ASN
05	SEPTEMBER 10, 2013	DRILLING PLAN RELOCATED



DETAIL A
(ENLARGED)
SCALE: 0.500
LINE TERMINAL (ALUMINUM)



DETAIL B
(ENLARGED)
SCALE: 0.500
GROUND TERMINAL (GALVANIZED)
(CAN BE ATTACHED TO ANY LUG)



DRILLING PLAN

ALL DIMENSIONS IN INCHES [MM] UNLESS NOTED.
 The drawings are prepared in accordance with the standards in effect at the date of production unless otherwise specified.
 Use of dimension lines has been authorized by ABB Inc.

POLIM-S IEEE STATION / IEC CLASS 3
 POLYMER ARRESTER (SSTL NAMEPLATE)
 1/2 SHED HOUSING OUTLINE

ABB INC.
 Power Products Division
 500 Distribution Circle, Ft. Pittsburg, PA 15066

SCALE: AS SHOWN
 SHEET 1 OF 1
 DRAWING NO. 00215B017ASN
 DATE: 07/21/2010

4F 4014 5

proj. e-06-d

FOR TENDER PURPOSES ONLY