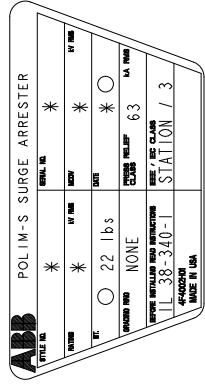
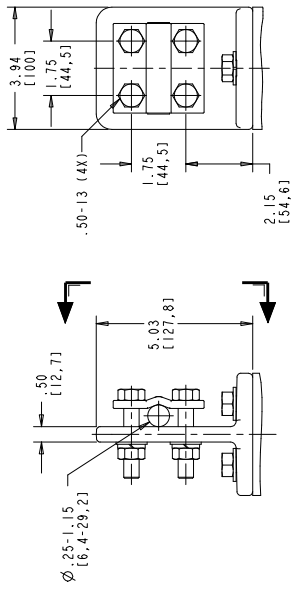


STYLE NO.	RATINGS		TOV (kV rms)	MAXIMUM RESIDUAL VOLTAGE WITH CURRENT WAVE (kV PEAK)	
	VOLTAGE V _r	MCOV V _{mCOV}		WITH PRIOR ENERGY SPL (SIPL) 8/20 μs	FW 0.5 μs
				500 A	3 kA 10 kA 20 kA 10 kA
				STANDARD CREEP	
00125A01ASN	12	10.2	Ø10 sec = 13.1	25.1	28.1 30.0 33.5 33.1
00155A01ASN	15	12.7	Ø10 sec = 16.4	31.3	35.0 37.5 41.8 41.2
00185A01ASN	18	15.3	Ø10 sec = 19.7	37.4	41.9 45.0 50.0 49.3
00215A01BSN	21	17.0	Ø10 sec = 23.0	41.8	46.9 50.4 55.9 55.2
				EXTRA CREEP	
00035B002ASN	3	2.55	Ø10 sec = 4.93	9.77	10.9 11.3 12.9 12.8
00045B003ASN	4	3.40	Ø10 sec = 6.93	10.0	11.2 11.6 13.3 13.1
00055B004ASN	5	4.25	Ø10 sec = 8.57	12.3	13.7 14.4 16.3 16.1
00065B005ASN	6	5.10	Ø10 sec = 10.57	12.8	14.3 15.0 17.0 16.8
00075B006ASN	7	5.95	Ø10 sec = 12.86	17.7	19.8 21.0 23.6 23.3
00085B007ASN	8	6.80	Ø10 sec = 15.86	18.5	20.7 22.0 24.7 24.4
00095B008ASN	9	7.65	Ø10 sec = 19.86	19.0	21.3 22.6 25.4 25.0
00105B009ASN	10	8.40	Ø10 sec = 24.0	21.0	23.5 25.0 28.0 27.6

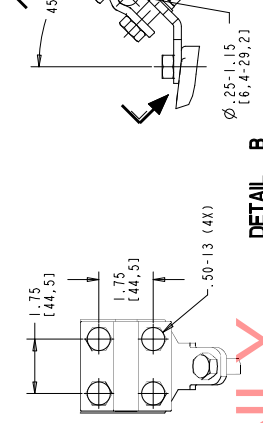


MASTER NAMEPLATE
 * ASSIGNED AT THE TIME OF PRODUCTION AND RECORDED IN THE PROPER LOCATIONS

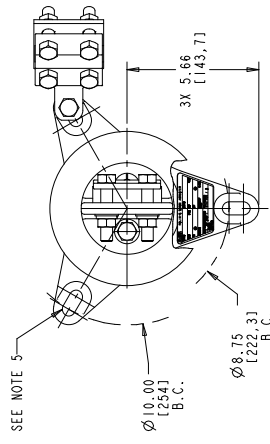
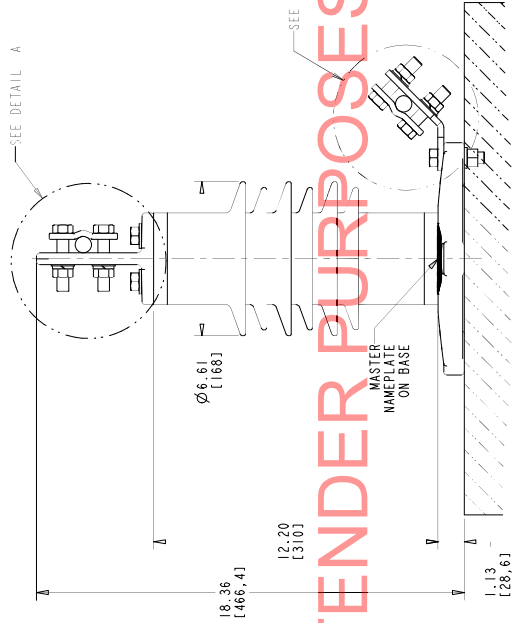
FOR TENDER PURPOSES ONLY



DETAIL A
(ENLARGED)
SCALE: 0.500
LINE TERMINAL (ALUMINUM)



DETAIL B
(ENLARGED)
SCALE: 0.500
GROUND TERMINAL (GALVANIZED)
(CAN BE ATTACHED TO ANY LUG)



DRILLING PLAN

ALL DIMENSIONS IN INCHES [MM] UNLESS NOTED
 THE DRAWING IS THE PROPERTY OF ABB. IT IS NOT TO BE REPRODUCED OR TRANSMITTED IN ANY FORM OR BY ANY MEANS, ELECTRONIC OR MECHANICAL, WITHOUT THE WRITTEN PERMISSION OF ABB INC.

POLIM-S IEEE STATION / IEC CLASS 3 POLYMER ARRESTER (SSTL NAMEPLATE) 6 SHED HOUSING OUTLINE	
ABB INC. Power Products Division 500 Distribution Circle, Ft. Pittsburg, PA 15066	ABB INC.
SCALE: AS SHOWN	SHEET 1 OF 1
DATE: 04/20/10	4F 40 15
REV: 01	5

- NOTES:
- FOR MINIMUM PHASE-TO-GROUND AND PHASE-TO-PHASE CLEARANCES WITH TYPE POLIM-S SURGE ARRESTERS REFER TO THE POLIM-S PRODUCT BULLETIN (Z6NM110077). OTHER APPARATUS STANDARDS, OTHER SPECIFICATIONS OR LOCAL CODES MAY SUPERCEDE DISTANCES SPECIFIED.
 - ARRESTER ASSEMBLY CONSISTS OF ARRESTER UNIT, LINE & GROUND TERMINALS WITH CLAMPS, AND .50 INCH HARDWARE.
 - LINE & GROUND TERMINALS CAN ACCOMMODATE CU OR AL CABLE LINE HARDWARE TO 1000 MCM (1.25 IN. DIA.) OR 1250 MCM (1.5 IN. DIA.) OR ROTATED 90° AS REQUIRED.
 - OR ROTATED 90° AS REQUIRED.
 - MITG SLOTS FOR .50 INCH HARDWARE (3) EQUALLY SPACED. THICKNESS OF LUG = .88 (22.4)
 - DESIGNED FOR VERTICAL OR HORIZONTAL MOUNT.
 - MAX CANTILEVER STRENGTH 20,000 in.-lbs (2260 Nm).
 - PRESSURE RELIEF CLASS IS 63 kA RMS SYMMETRICAL.
 - NOMINAL CREEPAGE DISTANCE 23.7 (601).
 - MAXIMUM ARRESTER WEIGHT 22.0 lbs (10.0 kg).

01	JULY 21, 2010	FORMAT TITLE BLOCK ADDRESS UPDATED	DJK
02	JULY 20, 2010	TERMINAL CALLOUT TO GROUND TERMINALS/ARRESTER UNIT	DJK
03	AUGUST 1, 2011	NOTE 8: CREEPAGE 22.7	DJK
		DETAIL B: 25 ADDED	DJK
		DRILLING PLAN RELOCATED	DJK
04	DECEMBER 10, 2013	NOTE 9: 23.7 WAS 22.7	DJK
05	JULY 21, 2015		DJK